

Dairy and Livestock Sales

Public Auction Register

Closing Date Monday, 5:00 P.M. of each week's publication

SAT OCT 26 - 2PM Valuable Real Estate (4.5 acres) Take Rt. 322 W. from Downingtown pass E Brandywine Baptist Church to 1st Rd. on right. Turn right follow to Jefferson Rd. turn left, 1st farm on right. East Brandywine Twp., Chester Co. Sale by: Ed Shive Kenneth Griest, Auct.

SAT OCT 26 - 9:30AM Far Eq., Tractors, Hshld. Located 1192 Harney Rd., Littlestown, PA. From Littlestown, PA. take Rt. 194 S. approx. 2 1/2 mis. then turn right onto Harney Rd. and go approx. 2 mis. to St. James U.C.C. Church & turn right at church onto lane to sale. Mrs. Eston Franks, Owner. Dennis J Plunkert, Auct.

SAT OCT 26 - 9AM Eq. Shop Related Tools, Hardware, Store Itmes. Located Union Co., 3 mis. N. of Mifflinburg, PA, turn S off Rt. 192 at Cowan, PA, About 1 1/2 mis. Alvin F. Yoder, Sr., Owner. Mark Glick, Auct.

SAT OCT 26 - 8AM Beautiful Antiques & Hshld. Located Biglerville, PA. Turning W. off Rt. 34, at Highs Store, onto Hanover St. to #142 in Adams Co. Clair F. Ditzler, Owner. Clair R Slaybaugh, Auct.

SAT OCT 26 - Show 10AM; Sale 1PM. Keystone of Quality Show & Sale Located Greene

Co Fairgrounds, Waynesburg, PA (Exit 3, Interstate 79). Sponsored by PA Simmental Assn Stough Livestock Service
 TUES OCT 29 - 9AM Powerline & Construction Eq. For Collier Construction Co., Cleveland, OH Vilsmeier Auction Co., Inc
 TUES OCT 29 - 4PM Farmersville Auction in

Farmersville, 3 mis E of Brownstown, Lanc Co., PA.

TUES. OCT 29 - Franklin Co., 4 mis. S of Shippenburg on Rice Rd. 140 Holsteins selling (115 Registered) Merion M & Donald E. Mooney, Owners Kling's Auction Service. Sale Mgrs

WED OCT. 30 - 9 AM Dairy Show New Holland Sales Stables, Inc

WED. OCT. 30 - 9:30AM Special Public Sale of All Kinds of Farm Tractors & Machinery Absolute Sales Watch for Other Dates. For Keener Eq.

NEW HOLLAND SALES STABLES, INC.



12 Miles East of Lancaster, Pa, Just off Rt. 23, New Holland, Pa.

SPECIAL HORSE SALE CONSIGNMENTS

for **MONDAY, OCTOBER 7, 1985**

To Be Sold At Approx. 12:00 Noon

- 1 Load Top Work Horses and Saddlebred Driving Horses consigned by Ward Wright.
- 1 Load Driving Horses consigned by Reuben G. Stoltzfus.
- 1 Load Driving Horses consigned by Jonas Beiler.

For more information contact:
 Abe Diffenbach, Mgr. 717-354-4341
 Norman Kolb 717-397-5538

MAPLE PLAIN DISPERSAL

REGISTERED HOLSTEINS

THURSDAY, OCTOBER 10, 1985

11:30 A.M.

Located in Chester County, PA, on Street Road, 6 miles north of Oxford, 2 miles south of Cochranville. From Route 896 go east on Street Road. From Route 10 go west.

80 HEAD

100% HOME RAISED
 Herd Certified & Accredited
 All Vaccinated

80 HEAD

Fifty six milk cows, approximately 25 1st & 2nd lactation
 Ten heifers due this fall, fourteen heifers yearlings to calves

Animals are all registered or eligible to be registered
 30 Years of ABC Breeding

4 animals classified Very Good, 15 animals Good Plus
 Balance 79 or Higher

1984 Rolling Herd Average - 14,700M 3.8F
 Present Rolling Herd Average - 13,700M

FEATURING

- GALE - Class. Very Good Fresh 7/1/84 3-4 15,262M 576F
 - MOLLY - Class. Very Good Fresh Aug. - Sire Molly Chief
 5 yr. Projected - 14,536M 475F
 - MAE - Class. Very Good Due Oct. - Sire Molly Chief Dam Ivanhoe daughter
 - SOPHY Lifetime 137,870M 3.9F
- Daughters & Granddaughters selling - Other cow families selling.

Owners:
HORACE L. & LAURA M. PRANGE

Pedigrees: Henry Kettering

Auctioneer:

Steve

Steve Jr. Petersheim:

717-786-4624 Lic. #AU-001349-L

Auctioneer's Note: Dairymen, this is an opportunity to purchase young cattle with potential. Work load has limited individual attention!

The First Annual MASON-DIXON Angus Sale

ROCKY FORGE FARM HAGERSTOWN, MARYLAND

1:00 P.M., SUNDAY, OCTOBER 13, 1985

The sale will be held at the Rocky Forge Farm located on the Maryland/Pennsylvania state line. (Located on Maryland Rt. 60 and Penn. Rt. 613 - 2 1/2 miles south of Waynesboro, Penn., or six miles north of Hagerstown, Maryland.)

WITH SPECIAL GUEST CONSIGNORS

Antietam Angus
 Dawn Acres Angus
 Fox Hill Farm
 Genetics Unlimited

Huntingdon Farm
 Penn State University
 Royal Angus
 Silvers Angus

Twin Oak Farms

A Super Selection of Show Heifer Prospects and
 20 Purebred Angus Show Steers

SELLING 60 OUTSTANDING LOTS

Featuring daughters of and calves by -
 Sir Wms Cracker Jack 735D Pine Drive Big Sky Premier Celebration PS Hugh Pockets Sir Wms Geiger Greenbrae Chairman Kruegers Foolish Pride Skarship Educator Sir Wms Elector Gunston Hombre Sayre Patriot Sir Wms Weatherman Gentle Ben PS Franco 064 157 Paradise Continental PS Great Northern 064 Sir Wms Cavalier
 And the valuable service of these great young sires -
 Yukon Jack New Yorker Wrangler Genetics Proton Power Drive R&J Austin

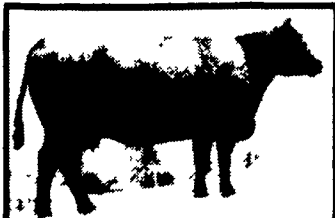


For your free catalog, address sale managers

Tom Burke/Dick Beck

at the
 World Angus Headquarters
 Smithville, Missouri 64089
 Phone: 816/532-0811

AUCTIONEER Col Mike Jones



MSU MISS REVOLUTION 636

The maternal grandam of the 1985 National Angus Show Reserve Junior Champion, MSU Proud Lady 8388, by Kruegers Foolish Pride. She sells with a herd sire prospect at side by Premier Celebration and she is due to calve in March to Genetics Yukon Jack. A super producer from a family of champions. A great producer from Greg Krueger and family.



PS MISS ERICA 005

A powerful daughter of the 1,400 pound yearling PS Franco 064 157 from a dam who is a paternal sister to the dam of PS Power Play. She sells with an April heifer calf at side by PS High Pockets, the Mr Angus son from Power Play's full sister, and she is rebred to PS High Pockets.



RALLY QUEEN T 5014

A maternal sister to the "10" daughter featured in the Genetics Unlimited consignment to the Eastern Invitational. Sired by PS Power Play from a dam by Camilla Wye 60A, she sells due to calve in March to Cobble Pond New Yorker with an April show heifer at side by Kruegers Foolish Pride.



BRIARHILL BLACK LADY 2553

A maternal sister to the \$300,000 Briarhill Bartman by the many times champion Cedarmont Destiny, the first son of Southern Tall Erroline 29E. Selling buyer's choice of this great producer bred to Yukon Jack or her April show heifer by the Keystone International Grand Champion Sir Wms Cracker Jack 735D. The best from Rocky Forge Farm!



PS JULIET 248

A paternal sister to the PS Franco 064 157 by PS Great Northern 064. She is the dam of the top selling bull at the 1984 Pennsylvania Bull Test and she has a March herd sire son at side by Pine Drive Big Sky. This big, strong female from the heart of the Penn State herd sells rebred to PS High Pockets.



SKARSHIP DUCHESS 6830

A productive daughter of Sir Wms Geiger from a granddaughter of Canadian Skyscraper. A past Rocky Forge show heifer herself, she has a daughter being retained at Rocky Forge and sells bred to Cobble Pond New Yorker with a top show prospect at side by Pine Drive Big Sky. A proven producer!