

Lancaster Co. DHIA

(Continued from Page D12)

Gerald T Harnish 245	GrH	7 5	305	25 654	3 3	851
James L High Rita	RH	4 8	305	25 047	3 4	851
Cremtop	RH	4 6	305	18 602	4 5	842
Rhoda	RH	8 5	305	20 589	4 0	833

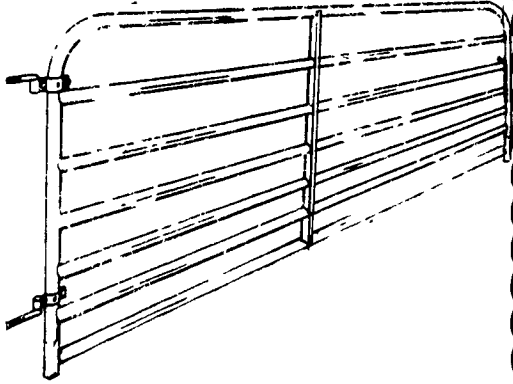
Harold C Musser 89	GrH	6 7	305	20 786	4 1	851
Ferncrest Farm 258	RH	9 11	305	22 017	3 9	851
Quarryville Presbyterian Home & Melvin Rohrer 293	GrH	4 11	293	21 496	4 0	850
Robert J Work 17	GrH	6 3	305	23 203	3 7	849
Clair M Bowman 40	GrH	7 0	305	25 436	3 3	845

Lancaster Farming Saturday, October 5, 1985-D13

Noah Kreider & Sons 411	GrH	3 4	305	20 263	4 2	845
601	GrH	5 1	269	19 044	4 1	786
John S Zimmerman 3	GrH	6 8	299	21 852	3 9	844
Parke H Ranck Molly	RH	3 5	305	19 636	4 3	849
Helen	RH	4 1	305	20 578	4 0	822
Deb	RH	4 1	305	18 054	4 5	809
Penn Hill Farm 53	GrH	3 1	305	22 705	3 7	842
Elam Petersheim Dandy 4	RH	5 9	305	25 177	3 3	840
Joseph W Best & Sons 5	GrH	5 2	305	24 738	3 4	837
John K Peters Melva	RH	3 11	305	21 285	3 9	835
Pansy	RH	6 1	289	18 886	4 1	783
David & Robin Dum 108	RH	4 2	305	21 958	3 8	832
Marbro Farm Flute	RH	8 9	305	21 842	3 8	831
Pam	GrH	4 10	305	23 312	3 4	796
John W Martin Jr 41	GrH	6 1	305	19 730	4 2	831
Jearl Wilmer Horst Joan 14	GrH	3 5	305	23 664	3 5	830
26	RH	2 7	305	19 842	4 1	819
James & Nancy Zuck 48	GrH	6 5	305	23 156	3 6	830
Welsh Vista Farms Rose	RH	7 11	305	22 884	3 6	830
LeRoy R Martin 145	H		305	21 408	3 9	828
150	RH	4 2	305	21 757	3 7	815
130	RH	6 0	305	15 161	5 2	789
147	RH	3 11	305	20 340	3 9	788
Garwood Farm Lillian	GrH	4 8	305	24 622	3 4	826
Robert L Shelly Pansy	RH	5 10	305	26 679	3 1	825
Pamela	RH	4 4	305	20 824	3 9	810
Rosmary	RH	3 4	305	21 546	3 7	789
Singing Maple Farms 82	GrH	3 3	305	21 854	3 8	825
Earl H Hoover 52	GrH	3 10	305	20 992	3 9	825
Harry H Ranck Jr Dimble	RH	2 1	305	19 149	4 3	825
Roy E Sensening 19	RH	4 7	305	24 017	3 4	824
Twin Oak Farms 320	GrH	5 10	305	23 427	3 5	824
Raymond & Louise Witmer Balsam	RG	3 2	305	16 301	5 1	824
Ivan S Stoltzfus Dawn	RH	4 2	305	22 701	3 6	815

(Turn to Page D14)

TUBULAR STEEL GATES



Seven 1-5/8" I.D. horizontal tubes spaced closer at the bottom for a pig tight gate. 50" high with adjustable clamp style hinges. All hardware needed for a complete installation is included. Painted finish.

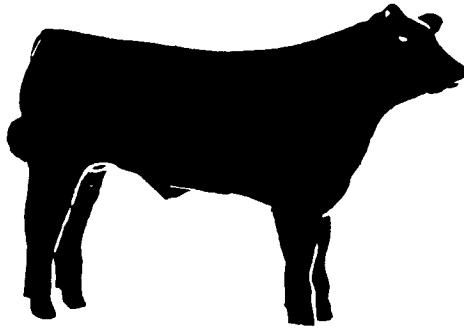
4' Length . .	*\$36.95*	12' Length . .	*\$45.95
6' Length . .	*\$39.95*	14' Length . .	*\$52.75*
8' Length . .	*\$41.45*	16' Length . .	*\$55.50*
10' Length . .	*\$43.95*		* Plus Sales Tax

KEY-AID DISTRIBUTORS

(Formerly Zimmerman's Animal Health Supply)
RD #4 Box 141 Litz, Pa 17543

717-738-4241

3 mile west of Ephrata, 1/4 mile south of Rt 322 along Wood Corner Road.



Club Calves

Chianina - Angus X Maine Anjou Crosses Consigned to Keystone International Expo Show and Sale Nov. 11

We will have around 20 head of fancy calves mostly black, sired by Chianina-Angus bulls on our Maine-Anjou cow herd. These calves were born in Apr., May and June.

Mike McClintic and Family
Rt. 1, Box 156-F
Meadow Bridge, W VA 25976
304-392-5648

500 SERIES Bobcat

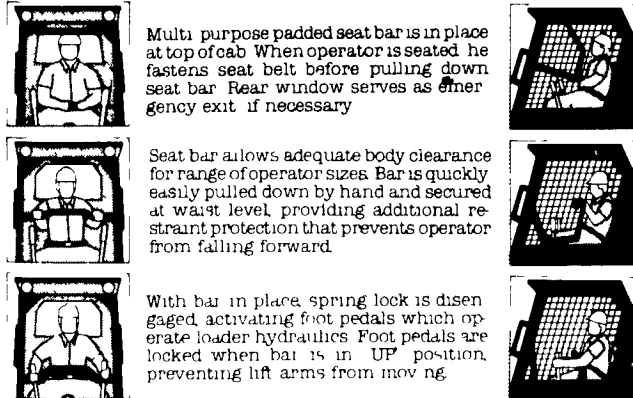
Compact & Powerful, 800 lb. Operating Capacity

540-Air Cooled Gas
543-Liquid Cooled Diesel

COMPARE THE FEATURES:

- PERFORMANCE**
800 lb. capacity with dump reach up to 32". When you work a Bobcat, you'll feel the power at the wheels for maneuverability and stability throughout full load cycles
- SERVICABILITY**
Tip up rollover protection structure for easier accessibility to hydrostatic components & steering linkage. 3/8" steel rear door on pin hinges makes routine maintenance a snap, bigger batteries and starters, dual element air cleaners
- SAFETY**

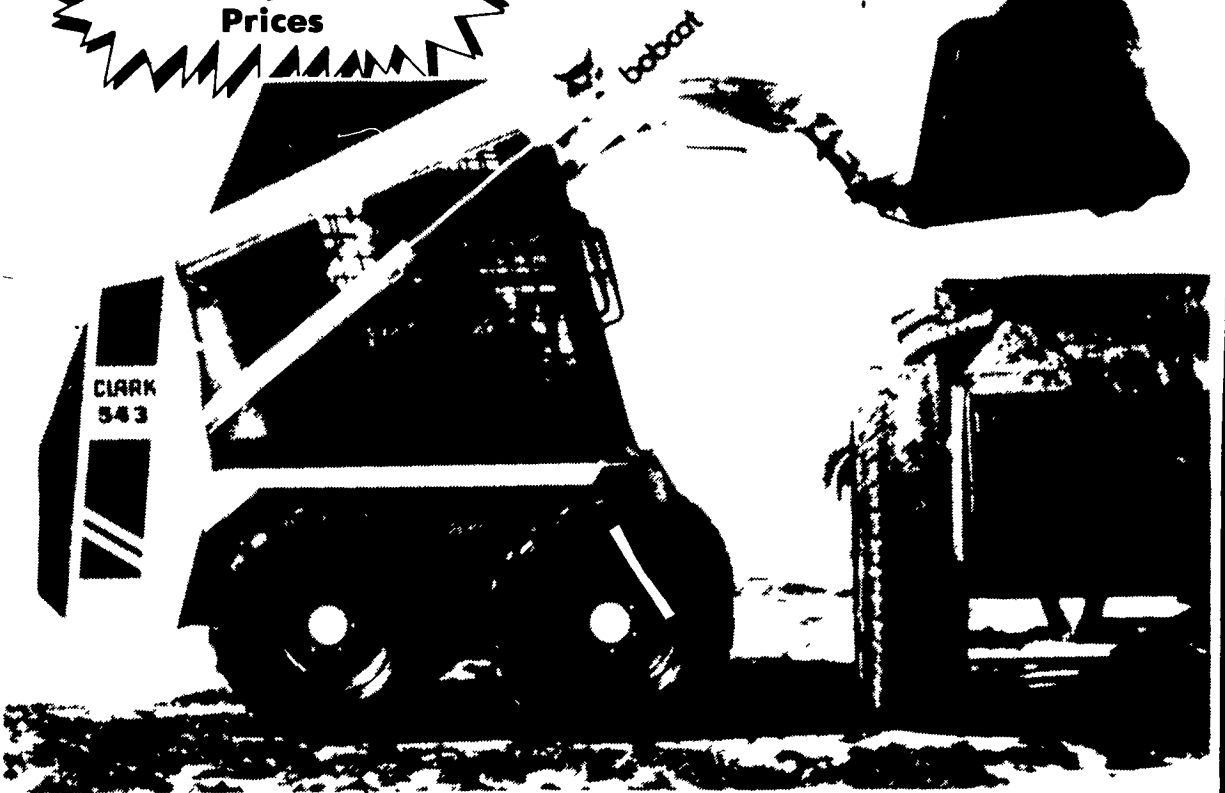
EXCITING NEW CONCEPT FOR SAFETY & COMFORT "THE SEAT BAR"



Multi-purpose padded seat bar is in place at top of cab. When operator is seated, he fastens seat belt before pulling down seat bar. Rear window serves as emergency exit, if necessary.

Seat bar allows adequate body clearance for range of operator sizes. Bar is quickly easily pulled down by hand and secured at waist level, providing additional restraint protection that prevents operator from falling forward.

With bar in place, spring lock is disengaged, activating foot pedals which operate loader hydraulics. Foot pedals are locked when bar is in UP position, preventing lift arms from moving.



PRICE



bobcat DEALERS:



BOBCAT...#1
13 Models Up To 3700 Pound Capacity

Carlisle, PA
PETERMAN FARM EQUIPMENT
717-249-5338

Chambersburg, PA
CLUGSTON IMPLEMENT INC.
717-263-4103

Harrisburg, PA
HIGHWAY EQUIPMENT & SUPPLY CO.
717-564-3031

Hatfield, PA
LCL CONSTRUCTION EQUIP. SALE CO.

215-362-2510
Wilmington, DE
302-998-0128

Honesdale, PA
CHARLES H. SIEPIELA, INC.
717-253-3334

Honey Grove, PA
NORMAN D. CLARK & SON INC.
717-734-3682

Martinsburg, PA
BURCHFIELD'S INC.

814-793-2194
Mill Hall, PA
DUNKLE & GRIEB
717-726-3115

Myerstown, PA
SWOPE & BASHORE INC.
717-933-4138

Palm, PA
WENTZ FARM SUPPLIES INC.
215-679-7164

Quarryville, PA
GRUMELLI'S FARM SERV.
717-786-7318

Slatington, PA
SCAT ENTERPRISES INC.
215-767-1711

Towanda, PA
S.P.E. INC.
717-265-4440

Turkhanock, PA
BARTON FARM SUPPLY
717-836-3740