

Philadelphia Wholesale Fruit and Vegetable Report

Monday, Sept. 30, 1985
Report Supplied by USDA

FRUIT

APPLES: ctn tray pack. WA Red Delicious USExFcy 64-80s 24.00; 88s 24.00-25.00; 100s 18.00-18.50 few higher; 113s 17.00-17.50 few higher USFcy; 138s 10.00; Golden Delicious USExFcy 88s 19.50-20.00; 100s 17.00-18.00; 113s 15.00-16.00 mos 16.00 USFcy 80s 12.00; VA Red Delicious USExFcy 88s 15.50-17.00; 100s 15.00-15.50; 113s 13.50; 125s 12.50 Comb USExFcy-Fcy 64-80s 16.00; 88s 15.00; 100s 14.00; 113s 13.00; 125s 12.00; US#1 64-88s 13.00; 100s 12.00; 113s 11.00; 125s 10.00 Golden Delicious USExFcy 100s 16.00; 125s 12.50; PA Red Delicious USExFcy 100s 13.50; 113s 12.50; NJ Red Delicious Comb USExFcy-Fcy 72s & 113s 10.00; NY MacIntosh Comb USExFcy-Fcy 100s 13.00-14.00; SOUTH AFRICA Granny Smith 88s 23.00; 100s 21.00; 110s 20.00; 135s 15.00k; 12-3 lb film bags 2-1/4" min; VA Red Delicious Comb USExFcy-Fcy 7.50-8.00; PA Red & Golden Delicious USExFcy 9.00; USFcy 2-1/2 inch 7.20 MacIntosh USFcy 7.00-8.00; WA Red Delicious USFcy 2-1/2 inch 8.40 bushel carton loose; NJ Red Delicious no grade mark 2-1/2 inch & up 6.00-7.00.

GRAPES: CALIF 23-lb lug Flame Seedless 11.00-13.00 mos 12.00 ord cond 5.00-8.00; Thompson Seedless 9.50-10.00 fair cond low as 6.00 ord cond 4.00-5.00 poor cond low as 75 cents Ribiers 10.00-13.00 few lower Christmas Rose one lot 15.00-16.00; sml 7.00-8.00; Italia 10.00; 21-lb lug film bags Flame Seedless 13.00-14.00; Thompson Seedless 11.50-12.00 fair cond low as 7.00; Ruby Red Seedless 16.00; NY Concord 12-1 qt flats 9.00-10.00; 8 qt ctn 5-5.50.

VEGETABLES

BEANS: Various bushel containers Round Green type unless otherwise stated; NJ 6.00-8.00 mos 7.00-8.00 few hgr fair cond low as 3.00; Wax type 8.00-9.00 few 10.00; MD 8.00 Kentucky Wonder type 9.00 few 10.00 fair cond 5.00-6.00; PA 6.00-7.00; DE fair cond 5.00; NC one lot few 13.00; CANADA 8.00.

BEANS-LIMA: NJ 1/2 bucr 10.00.
BEETS: NJ crt bchd 12s 4-4.50 few 3.50 topped bubkts 5.00-6.00; OH crt bchd 12s 3.50-4.00; PA crt bchd 12s 4.00.
BROCCOLI: ctn bchd. CALIF 14s 9.50-10.00 mos 10.00 few hgr 18s 10.00-11.50 mos 10.50 occ hgr; ME 14s 10.00; 18s 11.00; NJ 12s 6.00; 14s 8.00; CANADA 18s few 9.00.

BRUSSEL SPROUTS: CALIF 25-lb ctn loose 12.00-15.50.
CABBAGE: 1-3/4 bucr & crt medium Green unless otherwise stated; NJ including med-lge 3.50-4.00; Red sml 4.50; PA 3.50-4.50 mos 4.00 occ 5.00; lge 2.00-3.00; Red 5.00-6.00 few lower; NY 5.00 sks med-lge 3.25-3.50 mos 3.25; CANADA Savoy 9.00.

CARROTS: 48-1 lb film bags in film sacks; CALIF med-lge 9.00-10.00 occ hgr ord cond 5.00; MI med 8.00; CANADA med 6.50-7.00 few 7.50; sml 5-5.50; 50-lb sks loose jbo; CALIF 8.50-9.00 few 10.00; MI 8.00-9.00; WI 7.00; CANADA 6-6.50 mos 6.00 occ hgr & lwr ctn bchd 24s; CALIF 8.50-10.50 miniature ctn 20-12 oz film bags; OHIO 8.00; CALIF 6.00.

CAULIFLOWER: Ctn film wrapped; CALIF 12s 11.00 few hgr ord cond 5.00; ME 3-5s & 8-12s poor cond 1.00-3.00; CANADA 12s 9.00-10.00; 9s 7.00-8.00 jacket pack; LI Lcrt 12s 9.50-10.50 mos 10.00 fair appear 8.00-9.00; MI lge ctn one lot 4.00-5.00; CANADA lge ctn 12s 7.00-8.00; 9s 6.00-7.00; 16s 4.00-6.00.

CELERY: crts & ctns; CALIF 1-1/2 doz 6.50; 2 doz 7.25-8.50 few hgr 2-1/2 doz 8.25-10.00 occ hgr; NY 2-3 doz 5-5.50; MI 2 doz 8.00; 2-1/2 doz 8.50; 3 doz 7.50; OH Hearts 24s 11.00; CANADA 2-2-1/2 doz 7.00-8.00; 3-4 doz 6.00-7.00; Hearts 24s 11.00.

CHINESE CABBAGE: OH 1-1/9 bucr 9.00; NJ 1-1/9 bucr Bok Choy 7.00; CA WGA crt Boy Choy & Nappa 18.00.

LETTUCE: ICEBERG. ctn 24s unless otherwise stated; CALIF 7.00-9.00 mos 8.50 fair cond 5.00-6.50 film wrpd; 9.00-10.00 few 8.00; 30s 8.00-10.00 mos 9-9.50; WI fair cond 3.00-4.00; NJ 4.00-5.00 few lwr; OH 5.00.

ROMAINE: CALIF 24s crt 14.50-15.00 ctns 12.00-13.50 mos 13.00; OH crt 24c 8.00 few 9.00 fair cond 5.00-6.00; NJ ctn 24s 7.00 few 8.00 few 6.00.

BIG BOSTON: 24s; OH crt 6.00-7.50; CALIF ctn 9.50; NJ ctn 5.00.

BIBB: OH 16-qt bkt 5.00.

LEAF: CALIF ctn 24s 10.00-11.00; Red 10.00-10.50; OHIO crt 24s 8.00-9.00; 24-qt bkt 5.00; NJ crt 24s 5.00-6.00 few 7.00; Red few 7.00.

MUSHROOMS: PA 4-qt bkt med-lge 4.50-4.75 few 5.00; sml-med 3.50-3.75; 10-lb ctn 8-8.50 few 8.75; 10 12-oz cups 8.50 few 8.75.

OKRA: GA buhmprs sml 24.00.

ONIONS-DRY: 50-lb sacks US #1 or generally good quality Yellow Grano unless otherwise stated; COLO jbo 5.00-6.00 mos 5.50 fair cond 4.50; ID-OR jbo 5.50-6.00 few hgr; NY Globe type med 3.50-4.00 occ hgr fair appear low as 2.00; lge fair cond 2.25-3.50; 20-2 lb mesh bags 6.00; 25-lb sks Red lge few 7.50; NI Globe type med 3.75-4.00.

ONIONS-GREEN: NJ crt bchd 36s 6.00-7.50 mos 7.00; OH ctn bchd 48s 8.00-9.00; CALIF ctn bchd 48s 9.00.

PARSLEY: bchd 5-doz curly unless otherwise stated; OHIO crt 8.00-10.00; plain 12.00-14.00; CALIF ctn 11.50; PA crt 10.00.

PARSNIPS: NJ 5/8 bucr topped 6.00-7.00.

PEAS-GREEN: CA bucrns 21.00.

PEAS-SOUTHERN: GA buhmprs Purple Hull few 12.00.

PEAS-SUGAR: 10-lb ctn & crt per lb CA & GUATEMALA 95 cents; HONDURAS via air fair appear 90 cents.

PEPPERS: 1-1/9 bucrts & ctns Calif Wonder type Green unless otherwise stated; NJ lge 6.00-7.00; med 5.00 few lwr sml 3.50-4.00; Red lge 10.00 fair cond 7.00-8.00; med 8.00; Cubanelle med 4.00; Mxd Red 3.00-5.00; 1/2 bucrns Fingerhots & Hungarian Wax 4.00-5.00; CALIF ex-lge 10.50-11.00; med 7.50-8.00; MD lge 7-7.50; med few 6-6.50; PA lge 6-6.50 few lwr med-lge few 5.50-6.50; TEX lge 6.00; CANADA lge 6.00-7.00 med 3.50-5.00; Mxd Red lge 3.00-4.00.

RADISHES: ctns Red 30 6-oz film bags unless otherwise stated; OHIO 6-6.50 occ hgr & lwr 14-1 lb 7.00 ctn bchd 24s 5.00-6.00 mos 6.00; 24-8 oz film bags White 7.00-8.00; NY one lot 4.00-5.00; CA ctn bchd 24s 7.50.

RUTABAGAS: CANADA CD#1 waxed med 50-lb ctns 7.00 sks 6.50.

SPINACH: Savoy type NJ bubkts & crt 6.00-8.00 fair cond 4.00-5.00; PA crt 7.00-8.00; OH crt 7.00; Flat type CALIF ctn bchd 24s 8.00.

SQUASH: NJ 1/2 bucrns Zucchini sml-med 4.50-6.00 mos 5.00 fair cond low as 3.00; 1-1/9 bucrn Acorn 4.00-5.00 occ hgr Butternut 4.00-5.00 & Spaghetti 1/2 bubkt 3.00; NC 5/9 bucrts sml-med Zucchini 7.50; Yellow Straightneck 7.00; CA 28-lb ctn Zucchini fair qual sml-med 4.00-5.00.

TOMATOES: 25-lb ctn Pink to Light Red 85 percent US #1 or better unless otherwise stated SALES BY REPACKERS PA & TN 5x6s 8.00; 6x6s 6.50-7.00; 6x7s 5.00-6.00; SALES BY OTHERS; PA fair qual & cond 5x6s-6x6s 2.00-5.00; 6x7s 3.50 no grade lge 6.50-7.00 fair cond 4.00-5.00 med fair cond 3.50; NJ no grade mark lge 6.00-7.00 fair cond 5-5.50;

med 4-4.50; CALIF 5x6s 8.00-9.00; 6x6s 6.50-8.00 mos 7.00; 6x7s 5.00-6.00; FLA new 5x6s 9.00-10.00; 6x6s 8.00-9.00; WVA fair cond 5x6s 7.00 few 7.50; 6x6s 5.00-6.00; 6x7s few 4.50; CHERRY TYPE 12-1 pt flats NJ lge 8.00-9.00 fair cond 4.00-5.00; MI fair qual & cond 5.00-6.00; CA 14.00-15.00.

TURNIPS: PA topped 25-lb film bags 5.00; NJ 25-lb mesh bags topped 4.00.

WATERCRESS: WVA ctn bchd 25s 8.25; CA ctn bchd 24s 8.50.

Leola Produce Auction, Inc.

Tuesday, Oct. 1
Leola, PA

Report Supplied by Auction

Note: The term "bushel" refers to 11/9 bushel.

APPLES- (Red Delicious) 4.00-5.50 bu.

BROCCOLI- (12-14 bunches) 2.00-3.50.

CABBAGE- .12-.14 hd.; 1.00-1.10 bu.

CAULIFLOWER- (sm.-md.) .20-.35 hd.; (lg.) .58 hd.

CUCUMBERS- 4.50-8.00 bu.

EGGPLANT- 1.75-3.00 bu.

ENDIVE- bunches 16 ct. 5.00-6.25 bu.

GOURDS- (nonshellacked) 3.50-

4.50 bu.
INDIAN CORN- .25-.55 bu.

LIMA BEANS- 8.00-14.00 bu.

PEPPERS- (green) 3.25-4.75; (red) 3.50-8.00.

POTATOES- (#1,10#) .45-.50; (#1,50#) 1.75-2.75.

PUMPKINS- (neck) .25-.60 ea.; (face) sm. .35; md. .40-.75; lg. .80-1.50.

RADISHES- 25 ct. bunches) 4.75.

RED BEETS- (.12-.15 ct. bunch) 2.50-4.00.

SQUASH- (acorn) 1.75-4.00 bu.; (butternut) 2.00-4.50 bu.

STRING BEANS- (green) 5.00-7.00 bu.

SWEET POTATOES- (yam type) 7.00-10.00 bu.; (smaller) 3.75-5.25 bu.

TOMATOES- (#1 sm.-md. 25#) 4.50-6.00; (lg.) 8.50.
TURNIPS- (topped, 30# bag) 1.75-2.25.

Leinbach's Produce Auction

Shippensburg, Pa.
Sept. 26 & Oct. 1

Report supplied by auction

APPLES- .300-5.00 bu.

BROCCOLI- 2.85-3.25 bu.

CANTALOUPE- .05-.15 ea.

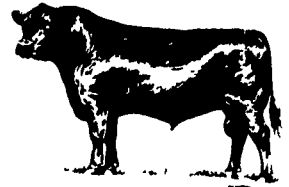
ONIONS- (50#) 3.10-3.60.

POTATOES- 2.00-3.50 bu.

PUMPKINS- .10-.70 ea.

TOMATOES- (25#) 3.10-7.50.

WATERMELON- .35-.70 ea.



EVERGREEN TRACTOR CO., INC.

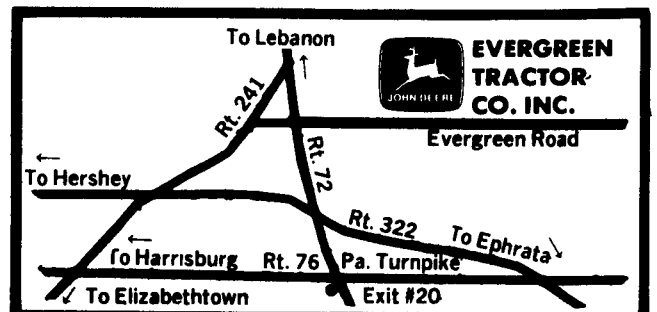
TRACTORS:	TILLAGE:
JD 1530D Tractor \$8,750	JD BW 12' Disc, Nice Condition \$1,250
JD 4230 Quad, Sound Guard \$17,500	JD 5-16" 2,500 Auto Reset Plow \$2,850
JD 2630 Hi-Low \$9,750	JD 3x16" Plow, 3 Pt \$675
JD SOLD	Oliver #565 4-15 Semi-Mounted Plow \$1,450
(1) White 2-105 w/Roll Guard Make Offer	JD BWF 18' Wing Disc \$2,650
IH 240 w/Fast Hitch and 2B Plow \$2,150	Howard 100" 1000 PTO Rotovator \$3,450
White 2-60 4WD w/Loader Make Offer	Brady 30' Field Cultivator \$5,450
IH 82 SOLD \$8,750	JD F145 6x16 Plow \$1,850
MF 30B Industrial \$10,950	JD F350 5x16 Plow \$2,450
Case David Brown 990 \$3,950	Brady 12 1/2' Field Cultivator \$1,750
JD B Hi-Comp \$1,250	Glenco 7 Tooth Soil Saver, Sharp \$3,250
Oliver 1255 4WD Tractor w/Loader \$6,950	IH 320, 10' Disc, 2 yrs old \$1,250
JD 50 Tractor \$1,695	MISCELLANEOUS:
JD 4640 Tractor, P S 840 Hrs \$32,500	18 4x38 Snap on Dual Wheels
HARVESTERS & FORAGE EQUIPMENT:	18 4x38 Direct Axle Dual Wheels
Fox Model 2000 Harvester w/2 Row \$2,600	14 9x38 Direct Axle Dual Wheels
Narrow & PU \$2,450	20 8x34 Direct Axle Dual Wheels
NH Super 717 Harvester \$575	18 4x34 Snap on Dual Wheels
NH P U Attachment \$575	Papec #880 Grinder Mixer w/Molasses Attach - Sharp \$3,950
(2) JD 5 1/2' Pickup Attachment \$450	IH 850 Grinder Mixer \$1,450
JD 5400 4 WD Harvester 3 Row 30" Row Crop & 7' Pickup \$4,500	JD 6 Row 30" Rear Cultivator \$1,250
NI #7 Pick SOLD w \$450	14 9x26 T-rail duals
NI 2 R Narrow Model 325 Pull Type Picker w/Grinder, like new \$4,500	20 8x34 direct axle, less rubber
(1) John Deere 34 w/One Row Row Crop \$1,550	NH 679 tandem axle spreader, hyd. endgate \$4,500
\$950	NI Tandem Axle Spreader
(1) John Deere Three Row Row Crop Attachment, New Belts \$3,850	Better Bilt 1500 Gallon Tank Spreader \$3,450
GRAIN DRYERS:	NH #90 Bale Mover
New Farm Fans AB8 Auto-Batch Dryer MUST MOVE CALL FOR PRICE (Dealer Inquiries Welcome)	COMBINES & PICKERS:
HAY MACHINES:	NI 709 Uni System, hydro w/power rear assist 818 combine 4R narrow head & 13' flex head Sharp Price on Request
JD 1209 Mower Conditioner w/Stub Guards \$3,850	JD 6620 Side Hill Turbo Hydro w/15' Flex Head Price on Request
JD 480 Mower Conditions \$1,850	JD 6600 Side Hill Hydro w/15' Flex 643 Cornhead Price on Request
NH 469 Mower Conditioner \$2,650	JD 3300 Dsl. w/Cab, 343 C H & Rotary Screen Price on Request
JD 14T Baler \$750	#643 6 Row 30" Corn Head
NH 479 Haybine \$3,850	#244 2 Row Corn Head
Hesston Hydro-Swing Mower Conditioner \$2,750	(1) IH 203 Combine, Gas w/10' Platform, P U Reel, 2 Row Cornhead, Cab \$3,950
PLANTERS & GRAIN DRILLS:	\$2,150
JD 8300 Bean Drill \$4,500	Gleaner M Combine, 4 Row 13' Head-Sold \$13,500
JD 7000 6 Row Planter \$6,350	Gleaner E w/Cab and 2 Row Corn Head, Grain Head, PU and Reel and Flex Knife, Nice \$3,650
JD FB-B 15x7 Drill \$650	NI 325 2 Row Narrow Picker, 12 Roll Bed \$3,650
JD 8 Row 7000 30" Planter \$375	JD #444 Corn Head
JD 490 4 row Planter \$375	JD #343 Corn Head
IH Model 620 12' Press Wheel Drill like new \$4,850	

NEW JOHN DEERE EQUIPMENT AT GENERIC PRICES

(1) JD 2700 5-18" Plow with Cover Boards and Coulters, Cash Price **\$8,600**

Coming in . . .

- Gleaner A Combine, 2 Row 13' Head w/Cab
- NH 1010 Bale Wagon
- JD 730 Dsl. Tractor, Roll-A-Matic, 3 pt
- JD 1010 Dsl Utility Tractor, Sharp
- JD Model B Plain Drill 24x6, DD w/Grass
- Brillion 15' Packer and End Transport
- JD 4400 Rotary Screen Diesel w/#443 Corn Head, Sharp



30 Evergreen Rd., Lebanon, PA, (717) 272-4641 or Toll Free 1-800-441-4450 Ext #6