

# THE OLD FARMER'S ALMANAC

SEPT. 30-OCT. 6, 1985

Wet and cold while leaves turn gold

Uproot unripe tomato plants and hang upside down in a cool dark place. Roger Mans hit his 61st home run for the season Oct 1 1961. Average length of days for the week 11 hours 40 minutes. American tradition of country fairs began with Berkshire Cattle Show in Pittsfield Mass. Oct 1 1810. Mennonite families in Pennsylvania founded the settlement of Germantown Oct 6 1683. *To believe a thing impossible is to make it so.*



**Ask the Old Farmer** Do you know where I can find old fashioned ear trumpets? F.G. Needham Mass. Your pharmacy should be able to give you the name of a company that makes them. A much simpler hearing aid is a small button in your ear and the end of the string in your shirt pocket. Everyone seeing it thinks you have a hearing aid and they raise their voices when talking to you.

**Home Hints** When detrosting the refrigerator place several layers of newspapers on each shelf to soak up the melting ice.

## OLD FARMER'S WEATHER FORECAST

**New England:** Week begins with partly cloudy skies and showers rainy and cold by midweek end of week partly cloudy and cool few showers possible.

**Greater New York-New Jersey:** Rain with cool temperatures at week's beginning midweek heavy rain cool end of week continuing cool partly cloudy skies.

**Middle Atlantic Coastal:** Rain at week's beginning midweek continuing rainy and cold, end of week clear with cold snap.

**Piedmont & Southeast Coastal:** Week begins with rain midweek continuing rain mild temperatures end of week clearing and cool.

(All Rights Reserved Yankee Publishing Incorporated Dublin NH 03444)

## Penns Valley Livestock

Centre Hall, Pa.

Tuesday, September 24

Report supplied by Auction

Beef Cows: Utility and Commercial 38.25-40.10; Cutters 36.10-37.80; Canners 31.50-35.50; Shells 28.00.

Heifers: Good 50.00-51.10; Standard 46.00-48.00; Commercial 40.00-44.00.

Steers: Choice 50.00-51.75; Good 45.00-49.00; Standard 42.00-44.00.

Bulls: Good 46.50-48.85; Standard 42.00-45.50.

Feeder Cattle: 300-500 lbs. large frame 51.00-54.00; 300-500

lbs. small frame 42.00-48.00; 500-700 lbs. large frame 46.00-52.00; 500-700 lbs. small frame 41.00-46.00.

Veal Calves: Choice 56.00-70.00; Good 57.00-65.00; Standard 44.00-56.00 Utility 35.00-43.00.

Farm Calves: Bulls 60.00-75.00; Heifers 54.00-65.00.

Hogs: 40.00-42.10.

Sows: 33.00-35.25.

Boars: 25.00-28.00.

Shoats: 25-30 lbs per head 18.00-24.00; 30-35 lbs. per head 25.00-28.00; 35-50 lbs. per head 30.00-33.00.

Lambs: 55.00-70.00.

Sheep: 20.00-23.00.

Goats per head 15.00-24.00.

# Livestock market and auction news

## New Wilmington Livestock

New Wilmington, Pa.

Monday, Sept. 16

Report supplied by PDA

**CATTLE** 342. Compared with last Monday's market, slaughter cows mostly steady. Few Choice slaughter steers 49.00-50.25, few Good 46.50-49, Standard 42.50-46.50, few Utility 40.00-42. Choice slaughter heifers 47.00-51, few yield grade #5 41.50-45, Good 42.50-46.50, Standard 38.00-42, Utility 33.50-37.75. Breaking Utility & Commercial slaughter cows 34.00-37, 4-5 31.50-34.25, Cutter & Boning Utility 32.00-35, Canner & Low Cutter 25.00-32, Shells down to 20. Few Standard slaughter bullocks 40.00-42.75. Yield Grade No. 1 1175-1795 lbs. slaughter bulls 43-45.75, one at 48.00, few #2 1160-1780 lbs. 42.25-43.25. **FEEDER CATTLE:** Medium Frame #1 3-450 lbs. steers 49.00-56, few #2 400-600 lbs. 43.50-46. Few Medium Frame #1 3-400 lbs. heifers 40-41.75, Medium & Large #1 510-785 lbs. 33.50-40.25, #2 500-770 lbs. 28.25-32.00. Medium Frame #1-2 635-850 lbs. bulls 35.00-40.00.

**CALVES** 273. Vealers steady...One Choice vealer at 80.00, Good 64.00-72, Standard & Good 90-120 lbs. 42.00-50, 65-85 lbs. 34.00-42, one small lot Utility 55 lbs. at 20.00.

**FARM CALVES:** Holstein Bulls 95-135 lbs. 55.00-67, one lot Hol. Heifers 101 lbs. at 52.00.

**HOGS** 375. Barrows and gilts 75 cents to \$1.50 higher. US No. 1-2 210-245 lbs barrows and gilts 40.50-41.85, No 2-3 210-255 lbs. 39.40-60, No 1-3 185-195 lbs. 35-35.50, 105-125 lbs 45.00-39.25. **SOWS** 50 cents to \$1 lower US No. 1-3 3-610 lbs. sows 32.00-35.50, No 2-3 350-575 lbs. 26 50-31.50. Boars 27.75-31.50.

**FEEDER PIGS** 23. Few US No 1-3 15-20 lbs feeder pigs 15.00-17 per head, few 35-45 lbs 25.00-29, 80-100 lbs. 42.00-51 per head.

**SHEEP** 113 High Choice & Prime 75-105 lbs spring slaughter lambs 65.00-71, Choice 70-100 lbs 55.00-67, Good & Choice 40-80 lbs feeder lambs 50.00-63.00 Slaughter ewes 13.00-20.00

## Greencastle Livestock

Greencastle, Pa.

Monday, September 23

**CATTLE** 523. Butcher Steers-Choice 51.00-54.75; Butcher Steers-Medium-Good 44.00-52.00; Butcher Heifers- Choice 50.00-53.50; But-

cher Heifers- Medium-Good 42.00-51.50; Butcher Cows- Utility-Good 36.00-40.00; Butcher Cows- Canners and Cutters 33.00-37.50; Butcher Cows- Shells 33.00 and down; Butcher Bulls- Medium-Good 44.00-53.10; Stock Steers- Medium-Good up to 64.00; Stock Heifers- Medium-Good 52.50.

**CALVES** 459. Medium-Good Calves- 160-220 lbs. 70.00-92.00; Medium-Good Calves- 125-160 lbs. 60.00-75.00; Medium-Good Calves- 100-120 lbs. 50.00-65 00; Medium-Good Calves- 80-100 lbs. 43.00-55.00; Holstein Bull Calves up to 85.00; Holstein Heifer Calves 57.00; Light and Green Calves down to 30.00.

**SHEEP and LAMBS** 108. Choice Lambs 65.00-67.00; Medium-Good Lambs 55.00-65.00; Light and Cull Lambs 40.00-60.00; Butchering Ewes and Bucks up to 28.00.

**HOGS** 122. Good-Choice Butcher Hogs 190-225 lbs. 41.00-42.60; Good-Choice Butcher Hogs 225-250 lbs. 42.00-42.60; Good-Choice Butcher Sows 400 lbs. down, up to 37.50; Good-Choice Butcher Sows 400 lbs., up to 38.25; Heavy Boars up to 28.00; Pigs- Per Head 12.00-24.00.



**A LESSON WELL LEARNED... LANCASTER FARMING'S CLASSIFIED ADS GET RESULTS!**  
Phone: 717-394-3047 or 717-626-1164

## SPECIAL FEEDER AND STOCKER CATTLE AUCTION

FRI., OCTOBER 4, 1985 7 P.M.

300-400 head all weights steers and heifers. Vintage Sales Stables, Inc., Rt. 30, Paradise, PA.

L. Robert Frame, Mgr.  
717-442-4181  
215-458-8518

## WOOD SHAVINGS & SAW DUST MIX

- \* Excellent Dairy Bedding
- \* Trailer Load Quantities Delivered
- \* Reasonably Priced
- \* Continuous Year Round Supply

Call For Price  
**717-653-1085**  
Martin Grain  
Mount Joy, PA

## CRIPPLED AND DISABLED

Cows, Steers & Bulls For Slaughter Under USDA Inspection

Call Wayne Taylor  
**717-866-6289**  
**215-286-9400**

Lebanon, Berks, Lancaster & Chester Counties

## Green Dragon Livestock Sales

Location: Ephrata RD 4. 1 mile N. on North State St., Ephrata.

## COWS COWS COWS SALE EVERY FRIDAY

Lots of good Northern Feeder & Stockers. Slaughter Cows - Bull Steer, Veal-lamb

11:00 A.M.-Beef Sale 200-300 each week.  
1:00 P.M.-Dairy Sale.  
7:00 P.M.-Small Animal Sale.

For Special Sales and Herd Dispersals on farm or at our barn or other market information call: Office 717-733-2444, Home 717-838-4318.

**WALTER H. RISSER, Proprietor**

All out of state and new buyers must have cash or certified check or current letter of credit from bank.



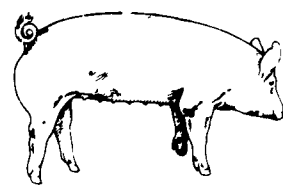
## ATTENTION FARMERS

EVERY MONDAY HATFIELD PACKING CO. and MOYER PACKING CO.

Will Receive Your Hogs and Cattle at the DANVILLE LIVESTOCK MARKET RD 4, Danville, PA

- We will receive your hogs from 8 AM to 12 Noon every Monday Your hogs will be weighed and paid for immediately
- We will also accept your sows & boars
- Your cattle will be received from 12:30 to 5 P.M. We will either pay you for your cattle immediately or you may sell them dressed weight
- There will not be a commission or yardage fee deducted from your check.
- You may call our office Monday morning and we will be able to tell you the base price for hogs for the day

MELVIN M. LEHMAN - Owner  
Danville Buying Station  
Phone: 717-275-2880



## EMERY'S BUYING STATION

OPEN TO RECEIVE YOUR MARKET HOGS

AT THE GREEN DRAGON MARKET RD 4, EPHRATA, PA 17522 1 MILE NORTH OF EPHRATA ON NORTH STATE STREET.

HOURS: MONDAY, TUESDAY, and WEDNESDAY 6:00 A.M. to 11:30 A.M.  
215-458-5677 Residence  
717-733-9648 Office

YOU ARE PAID FOR YOUR HOGS IMMEDIATELY

Ken & Lois Emery, Proprietors

## FRIDAY, OCT. 25 ON THE FARM MONTHLY BRED GILT SALE

Sale to Start Promptly Every 4 Weeks - at 1:00 P.M.

Located 18 miles south of Lancaster, Pa., 6 miles south of Quarryville, take Rt. 272 to Little Britain, turn north, follow Little Britain Road to Jackson Road, right. 2nd farm, OR take Rt. 222, out of Quarryville to Cedar Hill Road to Little Britain Road to Jackson Road, left Watch for sale arrows.

50 to 60 Head  
Now selling our new hybrid gilts representing mostly York & Hampshire & Landrace cross. Bred for easier & less trouble over farrowing and better weight gains.

Validated Brucellosis Free Herd #169  
Qualified Pseudorabies Free Herd #55

Hand mated with Breeding Dates

Local Trucker Available  
No Hogs Sold On Commission

CHRIST A. BEILER  
R.D. 2, Quarryville, Pa  
JOHN B. STOLTZFUS  
R D 1, Kirkwood, Pa

Abe Diffenbach, Auctioneer AU225L  
NEXT SALE DATE NOV. 22