

Strong prices

(Continued from Page A18)

21000 lbs of milk and 731 lbs of fat as a four-year-old.

Also selling for \$1700 was MVF Magic Dina consigned by Dawn Rhein of Pine Grove. Sired by Quicksilver's Magic of Ogston, this three-year-old scored 80% and completed her first lactation with 11277 lbs. of milk and 692 lbs. of fat. Her dam is projected at 12270 lbs. of milk and 737 lbs. of fat as an eight-year-old. Dina was purchased Ogston Farms of Columbus, NJ.

Other animals selling for over \$1,400 were: Herracres Top Brass Paula consigned by Paul Herr, Holtwood and sold to Dean Moose of Mercer for \$1500; Cedar Lane Top Brass Dew Drop consigned by Ivan Zimmerman and sold to Bradley Emig of York for \$1500; Valley-L Saint Polly consigned by Robert W. Ulrich Jr. and sold to Craig and Terry Rhein of Pine Grove for \$1450; Jul Am Top Brass Taffy consigned by Kenneth Hackett and sold to Stanley Mundrich of Dalmatia for \$1425; and Hi-Land Q. Noble Fab consigned by Ray Chamberlain and

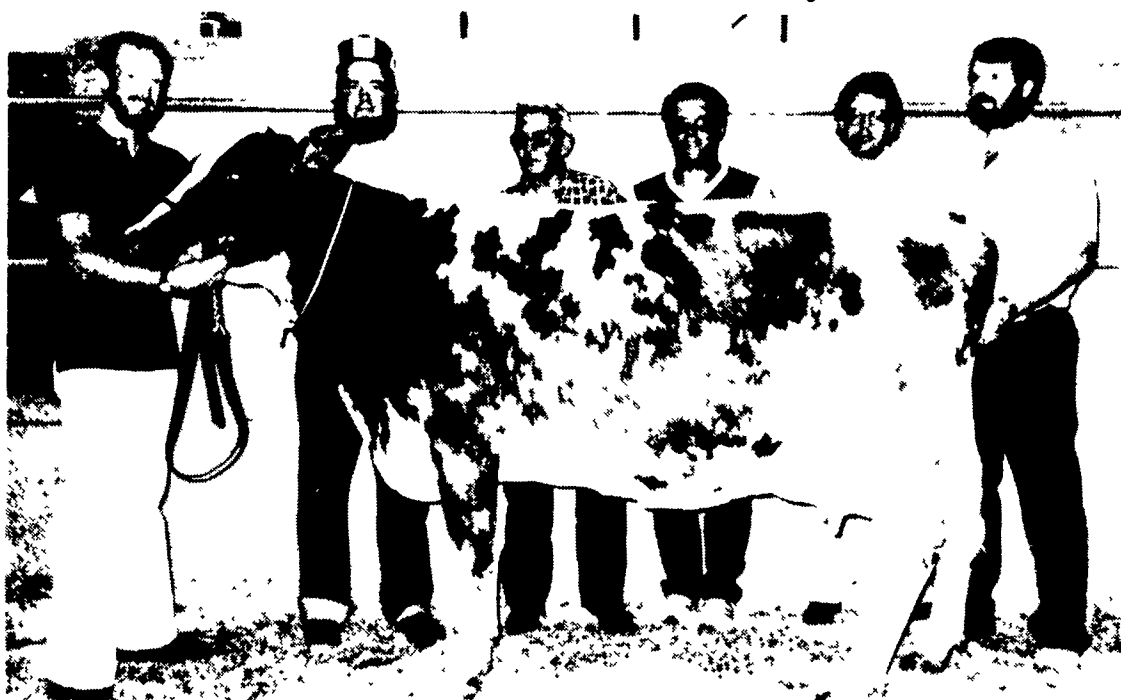
sold to Harold Steele of Roaring Spring for \$1425.

Topping the Pot 'O Gold calf sale for junior breeders was a Top Brass daughter consigned by William Eick of Columbia Crossroads. An August 1984 calf, Lisa was out of a Stardust Gemini daughter with a two-year-old record of 11841 lbs. of milk and 567 lbs. of fat. She was purchased by Cathleen Norman of Liberty for \$625.

Prior to the sale, awards were presented to the owners of cows sold in the 1984 Pennsylvania State Sale which completed the best lactations. Receiving these awards were: James Clark for Sample May October with a record of 15019 lbs. of milk and 697 lbs. of fat; second was Yvonne Zerby for GR Frosty Vale Magic Lee with 12970 lbs. of milk and 622 lbs. of fat.

James Clark also won the top Pot 'O Gold award for Vantage Pride Aster with a record of 13829 lbs. of milk and 623 lbs. of fat. Second place went to Brian Watson with Normadell Magic Emma for 10260 lbs. of milk and 460 lbs. of fat.

Ayrshire brings \$1,200 at Keystone Sale



An Ohio buyer paid \$1,200 for this Ayrshire cow at the Keystone Elite Ayrshire Sale Tuesday at the All-American Dairy Show in Harrisburg. From left, above, are Dwight Hunter at the halter; Harold Rader, agent for the buyer; David Eades of Mechanicsburg, OH; consignor Bob Haynes of Tully, NY; Pennsylvania Ayrshire Association President John Ocker III; auctioneer Frank Cowen and sale manager Richard Engelbrecht. The 20 mature animals sold at the sale brought an average of \$814, while the overall sale average was \$650. Volume buyers were Glenn and Gary Lee Crowl of Airville, York County, who bought five animals.

Hybrex Hybrid Wheat are bringing home championship yields as high as 100 bushels per acre.



Twelve years of intense research have created a line of thoroughbreds unlike any other

seed wheat in the world. The technology is based on a chemical hybridizing agent designed to produce the most advanced wheat hybrids in the shortest possible time.

The results? That extra hybrid vigor once available only in seed corn. Increased

tillering, which dramatically reduces seeding rates (up to 50% in some tests). Greater straw strength. And added tolerance to ward off disease.

Bred for the American wheat farmer of the 80's, Hybrex hybrids respond wholeheartedly to high management techniques.

In a university trial in Maryland, a Hybrex hybrid easily outdistanced a field of 23 popular varieties with 127 bushels per acre.

And we're currently conducting trials with customers in Pennsylvania and Maryland that are showing outstanding results. Like these farmers, with good crop management, you should significantly surpass your present varietal yield record, and boost profits substantially.

Call us or write for more details—we'll tell you about our regional results.

Call us or write for more details—we'll tell you about our regional results.



For today's progressive farmer.

You'll find our complete product line at dealerships throughout Pennsylvania, New York, Maryland, Delaware, Virginia, New Jersey, Ohio and much of New England.



Beachley-Hardy Seed Company

P.O. Box 366 / Camp Hill, PA 17011 / 717-737-4529

Large Quantities of Sawdust Available

10 cents per cubic foot loaded on your truck

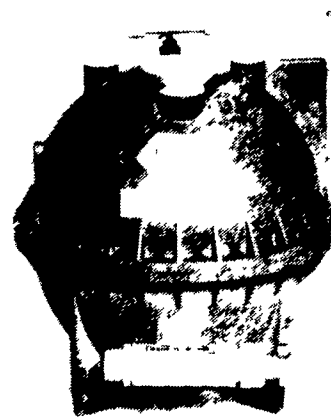
KONDOR LUMBER CO.

York, PA

717-755-6841

MEDICATE YOUR FARM ANIMALS ACCURATELY

Simple valve adjustment permits wide range of proportional settings...



- ✓ **MANIFORD METERING** You can tell at a glance if proportioner is operating properly. NO MORE guessing or hoping. VISUAL read out scale lets you monitor treatment instantly.
- ✓ **NO WATER SHUT OFF** The Medi-cator will not stop the flow of water regardless of how little the flow.
- ✓ **TROUBLE FREE** The most trouble free Medi-cator available. No troublesome moving parts to maintain. A simple clean water bath after using is all that is needed.
- ✓ **WARRANTY** A full one year limited warranty against defective workmanship comes with each Medi-cator.
- ✓ **NO ELECTRICITY NEEDED** You may move your Medi-cator from location to location if you prefer. The Medi-cator operates solely from water pressure ranging from 3 lbs. to 60 lbs.
- ✓ **LOW WATER FLOW?** The Medi-cator will proportion medication with water flow as low as 1 pt. per minute or as high as 4 gallons per minute. Ideal medicator for any size operation. It is totally controlled by water flow. When the flow stops the medication stops.

Dealer Inquiries Invited

KEY-AID DISTRIBUTORS

(Formerly Zimmerman's Animal Health Supply)
RD#4 Box 141 Lititz, Pa 17543

717-738-4241

3 mile west of Ephrata, 1/4 mile south of Rt. 322 along Wood Corner Road.