

THE OLD FARMER'S ALMANAC

SEPT. 23-29, 1985

Continual rain, what a pain.

Water young fruit trees generously each week until the ground freezes John Paul Jones proclaimed to the British, "I have not yet begun to fight," Sept. 23, 1779. Average length of days for the week 11 hours 59 minutes Full moon Sept. 28 (Sat) David O. Saylor patented cement, Sept. 26, 1871 Daniel Boone died at age 85 Sept. 26, 1820. After all is said and done more is said than done.



Ask the Old Farmer: My friend and I noticed that cows out feeding in the pasture are all facing the same way. Is there a reason for this? S. B. E., Wilton, N.H.
Yup especially in the coastal sections. The critters swing like a vane on the gable of a barn, to head the wind. Otherwise the wind will rough up their fur and they don't like it.
Home Hints: An unused portion of onion will keep well if stored in a tightly covered jar in the refrigerator.

OLD FARMER'S WEATHER FORECAST

New England: Week begins with warm temperatures and rain, midweek sunny and cool, showers north, end of week showers, partly cloudy.
Greater New York-New Jersey: Rain with cool temperatures at week's beginning, partly cloudy with sprinkles midweek, rain, cool temperatures to end week.
Middle Atlantic Coastal: Beginning of week rain with warm temperatures, mid through end of week sunny and pleasant.

(All Rights Reserved Yankee Publishing Incorporated Dublin, NH 03444)

Farmers Livestock Auction

Duncanville, Pa.

Monday, September 16

Report Supplied by PDA

CATTLE 177: High Ch. & Pr. sl. steers 52.00-53.50, Choice 50.00-51.00, High Good & Low Ch. 47.50-48.75, Good 43.50-46.00, Good & Choice holsteins 42.00-46.00, Standard 40.00-41.50, Utility 32.50-37.50. Choice sl. heifers 50.00-51.25, Good 46.50-48.00, Standard 40.00-42.50, Utility 35.00-38.50. Breaking Ut. & Commercial sl. cows 36.50-38.50, Cutter & Boning Ut. 34.00-37.00, Canner & Low Cutter 30.00-33.75, Shells down to 25.00. Choice sl. bullocks 48.50-49.25, Good 44.00-46.50, Standard 40.00-43.00, Utility 35.00-38.50. Yield Grade No. 1 1200-1450 lbs. sl. bulls, 42.00-45.00, Yield Grade No. 2 1200-1500 lbs. 40.00-41.75.

FEEDER CATTLE: Steers Good 44.00-51.00, Standard 35.00-41.50, Heifers Good 40.50-44.00, Standard 31.50-39.50, Bulls Good 42.50-46.00, Standard 30.50-38.50.

CALVES 244: Choice 72.50-78.50, Good 56.00-62.00, Standard & Good 90 lb. to 130 lb. 45.00-55.00, Utility 50-75 lbs. 35.00-42.50.

FARM CALVES: Holstein bulls

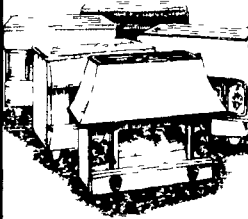
90-130 lbs. 60.00-84.00, Holstein heifers 90-130 lbs. 47.50-60.00.

HOGS 70: US No. 1-2 210-245 lbs. barrows and gilts 42.50-43.75, No. 1-3 210-240 lbs. 41.50-42.25. US No. 1-3 300-600 lbs. sows 35.00-38.00, No. 2-3 300-600 lbs. 32.50-36.00. Boars 26.50-28.00, Light weights 28.00-29.50.

FEEDER PIGS 36: US No. 1-3 30-40 lbs. feeder pigs 25.00-31.00 per head, No. 1-3 30-40 lbs. 22.00-27.50.

SHEEP 25: High Ch. & Pr. 90-110 lbs. 62.50-66.00, Good 85-100 lbs. 58.00-62.00. Slaughter ewes 12.00-18.00. **GOATS** None.

SURDIAC COAL STOVES



Hopper Feed and Automatic Draft

Stop By For Demonstration

BOWMAN'S STOVE SHOP

RD 3, Ephrata, PA 17522
Rt 322, 1 Mi East of Ephrata

(717) 733-4973

Tues, Wed 10-6;
Thurs, Fri 10-8,
Sat 10-4, Closed Monday

Livestock market and auction news

Middleburg Livestock

Middleburg, Pa.

Tuesday, September 17, 1985

Report Supplied by Auction

CATTLE 444: Compared with last Tuesday's market. High Choice & Prime slaughter steers 53.00-55.25, Individual 56.25, Choice 51.50-54.50, Good 48.00-51.50, Standard 46.00-48.00, Utility 40.00-46.00. Choice slaughter heifers 48.00-52.50, Good 45.00-48.00, Standard 42.00-45.00, Utility 38.00-42.00. Breaking Utility & Commercial slaughter cows 37.00-39.00, Few 40.00, Cutter and Boning Utility 35.00-38.00, Canner & Low Cutter 30.00-35.00, Shells down to 28.00. Choice slaughter bullocks 52.00-55.50, Good 47.00-52.00. Yield Grade No. 1 1200-1965 lbs. slaughter bulls 46.00-52.50, Yield Grade No. 2 800-1200 lbs. 42.00-46.00.

FEEDER CATTLE: Steers 350-800 lbs. 52.00-62.50; Heifers 350-750 lbs. 35.00-53.00; Bulls 350-770 lbs. 40.00-58.00.

CALVES 191: Vealers Good 55.00-68.00, Few 72.00, Standard & Good 90-110 lbs. 45.00-50.00, 60-90 lbs. 35.00-45.00. **FARM CALVES:** Holstein bulls 90-125 lbs. 55.00-70.00.

HOGS 377: US No. 1 220-240 lbs. barrows & gilts 42.00-43.25, No. 1-2

210-240 lbs. 41.00-42.00, No. 1-3 190-290 lbs. 36.00-41.00.

SOWS - US No. 1-3 300-675 lbs. sows 32.50-36.25, No. 1-3 26.00-32.50. **Boars - 200-205 lbs.** 26.00-31.00.

FEEDER PIGS 240: US No. 1-3 20-35 lbs. feeder pigs 22.00-30.00 per head, No. 1-3 35-50 lb. 30.00-37.00.

SHEEP 37: Choice Spring slaughter lambs 90-120 lbs. 65.00-70.00, Good 75-90 lbs. 55.00-65.00. Slaughter ewes 20.00-30.00 per head.

heifers. Cows and bulls comprised near 5% of estimated receipts. Actual auction sales 1427 head.

FEEDER STEERS: Medium frame 1 pkg. 365 lb. 72.00; 425-475 lb. 66.50-72.20; 500-600 lb. 59.40-63.00; 600-700 lb. 58.50-60.40; lot 735 lb. 59.50; 800-850 lb. 52.10-55.80.

Medium and large frame mixed 1-2 few near 550 lb. 56.80-61.25; 600-700 lb. 55.10-58.00; 760-775 lb. 54.90-56.20.

Large frame 2 holsteins pkg. 281 lb. 56.90; few 800-850 lb. 42.50-42.90.

FEEDER HEIFERS: Medium frame no. 1 few 360-400 lb. 59.00-59.20; 425-500 lb. 55.80-62.00, pkg. 445 lb. 63.50; 525-600 lb. 53.10-55.25; 640-660 lb. 54.50-56.00; 725-750 lb. 52.40-53.40.

Medium and large frame mixed 1-2 400-500 lb. 52.00-56.25; 500-650 lb. 51.20-55.75.

SLAUGHTER COWS: Boning utility 1-2 33.00-34.90. Few cutters 1-2 33.60-34.10.

SLAUGHTER BULLS: Y.G. 1 1300-1400 lb. 44.10-46.40.

FOR THE WEEK: Feeder steers 1.00-3.00 higher. Feeder heifers 2.00-4.00 higher. Slaughter cows 25-75 higher. Slaughter bulls steady to firm.

Oklahoma City

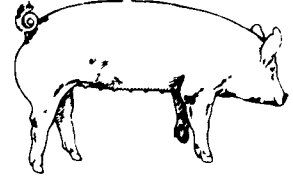
Wednesday, Sept. 18

Report supplied by USDA

Estimated Receipts: 2200

Same Day Last Week: 2209

Feeder steers and heifers generally steady with Tuesday except steers suitable for commodity deliveries and 400-500 lb. heifer calves steady to 1.00 higher. Slaughter cows steady in limited test. Slaughter bulls steady. Bulk supply medium frame 1 and 1-2 425-700 lb. steers and 400-750 lb.



EMERY'S BUYING STATION

OPEN TO RECEIVE YOUR MARKET HOGS

AT THE GREEN DRAGON MARKET RD 4, EPHRATA, PA 17522 1 MILE NORTH OF EPHRATA ON NORTH STATE STREET.

HOURS: MONDAY, TUESDAY, and WEDNESDAY 6:00 A.M. to 11:30 A.M. 215-458-5677 Residence 717-733-9648 Office

YOU ARE PAID FOR YOUR HOGS IMMEDIATELY

Ken & Lois Emery, Proprietors

Green Dragon Livestock Sales



Location: Ephrata RD 4. 1 mile N. on North State St., Ephrata.

COWS COWS COWS SALE EVERY FRIDAY

Lots of good Northern Feeder & Stockers. Slaughter Cows - Bull Steer, Veal-lamb.

11:00 A.M.-Beef Sale 200-300 each week.

1:00 P.M.-Dairy Sale.

7:00 P.M.-Small Animal Sale.

For Special Sales and Herd Dispersals on farm or at our barn or other market information call: Office 717-733-2444, Home 717-838-4318.

WALTER H. RISSER, Proprietor

All out of state and new buyers must have cash or certified check or current letter of credit from bank.



ATTENTION FARMERS

EVERY MONDAY HATFIELD PACKING CO. and MOYER PACKING CO.

Will Receive Your Hogs and Cattle at the DANVILLE LIVESTOCK MARKET RD 4, Danville, PA

- We will receive your hogs from 8 AM to 12 Noon every Monday Your hogs will be weighed and paid for immediately.
- We will also accept your sows & boars.
- Your cattle will be received from 12:30 to 5 P.M. We will either pay you for your cattle immediately or you may sell them dressed weight.
- There will not be a commission or yardage fee deducted from your check.
- You may call our office Monday morning and we will be able to tell you the base price for hogs for the day.

MELVIN M. LEHMAN - Owner Danville Buying Station Phone: 717-275-2880

Looking For More Farm Income?

Opportunity Is In The Hog Business We are looking for farmers in South-eastern PA. to build new finishing floors We contract to guarantee

Pay Back and Income To You All Inquiries Confidential

Send Name, Address, County and Phone Number To Lancaster Farming Box 366-L-78, Litz, Pa. 17543

CRIPPLED AND DISABLED

Cows, Steers & Bulls For Slaughter Under USDA Inspection

Call Wayne Taylor

717-866-6289

215-286-9400

Lebanon, Berks, Lancaster & Chester Counties

FRIDAY, SEPT. 27 ON THE FARM MONTHLY BRED GILT SALE

Sale to Start Promptly Every 4 Weeks at 1:00 P.M.

Located 18 miles south of Lancaster, Pa., 6 miles south of Quarryville, take Rt. 272 to Little Britain, turn north, follow Little Britain Road to Jackson Road, right. 2nd farm, OR take Rt. 222, out of Quarryville to Cedar Hill Road to Little Britain Road to Jackson Road, left Watch for sale arrows.

50 to 60 Head Now selling our new hybrid gilts representing mostly York & Hampshire & Landrace cross. Bred for easier & less trouble over farrowing and better weight gains.

Validated Brucellosis Free Herd #169 Qualified Pseudorabies Free Herd #55

Hand mated with Breeding Dates

Local Trucker Available No Hogs Sold On Commission

CHRIST A. BEILER R.D. 2, Quarryville, Pa JOHN B. STOLTZFUS R.D. 1, Kirkwood, Pa
 Abe Diffenbach, Auctioneer AU225L
NEXT SALE DATE OCT. 25