



HOG MARKETS

New Holland Hogs

New Holland Sales Stables
Monday, September 16
Report supplied by auction

Today 1057
Last Monday 1415
Last Year 1972
TREND: Compared to last Monday barrows and gilts 1.50-2.00 lower.
BARROWS AND GILTS: US 1-2 210-245 lb. 41.50-42.25, Few early 41.00-41.50. US 1 210-240 lb. 42.00-42.75. US 1-3 200-260 lb. 41.00-41.50, Few 40.00-41.00.

Lancaster Hogs

Lancaster Stockyards
Saturday, September 14
Report supplied by auction

1,200 head.
US 1: 215-240 lb. 44.00-45.50; few head, 44.50-46.25; US 1 & 2 210-235 lbs. 43.00-43.85. US 1&3's: 220-245 lbs. 41.74-42.75. US 2&4: 220-245 lbs. 40.50-41.50. US 3&4: 210-250 lbs. 39.50-40.00.
Sows: 500-650 lbs. 30.00-37.25; 300-475 lbs. 30.00-36.50.
All Boars: all weights 26.00-30.00.

Carlisle State Graded Pig Sale

Carlisle Livestock Market Inc.
Carlisle, Pa.
Friday, September 13
Report supplied by auction

TREND: Compared to August's State Graded Pig Sale pigs were 10.00 to 15.00 lower. Total supply included 2,056 pigs of which 1,714 graded 1&2's or 2's. All pigs weighed on arrival and sold by the hundred weight.
US NO. 1&2's: 945 head. 7 head 23 lbs. 75.00; 99 head 29-39 lbs. 75.00-90.00; 484 head 40-49 lbs. 65.00-84.00; 227 head 52-59 lbs. 61.00-78.00; 91 head 60-65 lbs. 57.00-78.00; 37 head 71-89 lbs. 54.00-66.00.
US NO. 2's: 769 head. 58 head 25-27 lbs. 74.00-79.00; 243 head 33-39 lbs. 55.00-85.00 (mostly 73.00-85.00), 130 head 40-49 lbs. 65.00-73.00; 18 head 47-49 lbs. 53.00-60.00; 195 head 50-59 lbs. 57.00-68.00; 116 head 60-71 lbs. 53.00-65.00; 9 head 84-115 lbs. 51.00-60.00.
US NO. 2&3's: 188 head. 50 head 23-29 lbs. 70.00-76.00; 138 head 30-63 lbs. 49.00-60.00.
UTILITIES: 115 head. 115 head 20-43 lbs. 39.00-50.00.
AS IS: 39 head. 39 head 16-95 lbs. 27.50-48.00.
Next State Graded Sale Friday, October 11th, 1985. (Grading 8:00 a.m. until 11:30 a.m.)

Lancaster Feeder Pigs

Tuesday, September 17
Report supplied by USDA

Today 416
Last Tuesday 503
Last Year 539
TREND: Compared to last Tuesday feeder pigs mostly steady, instances 5.00 higher on 25-40 lb. weights. All pigs weighed on arrival and sold by the hundred weight.

US 1-2: 26 head 22-28 lbs. 100.00; 51 head 30-39 lbs. 82.00-86.00; 124 head 40-49 lbs. 66.00-73.00, 41 head 41-44 lbs. 80.00; 37 head 51-55 lbs. 58.00-66.00, 27 head 60-75 lbs. 56.00-60.00.
US 2-3: 26 head 24-28 lbs. 70.00-87.00.

Indianapolis Hogs

Thursday, September 19
Report supplied by USDA

700 - Barrows & gilts active, 25-50 higher.
BARROWS & GILTS: US 1-3 225-255 lb. 42.50-43.00.
SOWS: Moderately active, steady-1.00 higher in a limited test. US 1-3 Package 425 lb. 36.00; 600-675 lb. 42.00-43.00.
BOARS: Over 400 lb. 30.00.

St. Louis Hogs

Thursday, September 19
Report supplied by USDA

3500. Barrows & gilts fairly active, 25 instances 50 higher.
BARROWS & GILTS: US 1-2 230-260 lb. 41.75-42.00; 210-230 lb. 41.50-41.75. US 1-3 200-260 lb. 41.00-41.50; 260-270 lb. 41.00-41.50.
SOWS: 300-500 lb. mostly steady; 500 lb. & up 1.50 lower. (About 12%) US 1-2 300-500 lb. 34.50, few 35.00. US 1-3 Over 500 lb. 35.50-37.50.
BOARS: Over 300 lb. 33.00; under 300 lb. 32.00.

Peoria Hogs

Thursday, September 19
Report supplied by USDA

2000. Barrows & gilts active, fully 50 higher.
BARROWS & GILTS: US 1-2 220-250 lb. 42.00-42.50. US 1-3 220-250 lb. 41.50-42.00.
SOWS: 25 to 50 higher. (14%) US 1-2 350-500 lb. 33.75-34.50. US 1-3 500-650 lb. 37.00-37.50, few 38.00.
BOARS: Over 350 lb. mostly 32.75, few 33.00; under 350 lb. 31.00-33.50

Lancaster Hogs

Lancaster Stockyards
Monday, September 16
Report supplied by USDA

HOGS: Compared to last Wednesday barrows and gilts 50 to mostly 1.00 higher; sows 50-1.00 higher, instances 2.00 higher.

BARROWS AND GILTS: US 1-2 210-250 lb. 41.75-42.50. US 1 Few 210-250 lb. 43.00-44.50. US 1-3 200-260 lb. 41.00-41.75.

SOWS: US 1-2 300-500 lb. 32.00-35.00, few 35.00-36.00 US 1-3 500-650 lb. 35.00-38.00, few 38.00-38.75.

Tuesday, September 17

Today 111
Last Tuesday 87
Last Year 127

TREND: Insufficient volume to fully test trends. Supply mainly US 1-2 210-240 lb. selling at 42.50-42.60; few US 1-3 200-250 lb. 41.00.

Wednesday, September 18

HOGS: Compared to last Monday barrows and gilts firm to 50 higher.

BARROWS AND GILTS: US 1-2 210-250 lb. 41.75-42.50, Couple lots 42.50-43.00. US 1 210-250 lb. 43.50-43.75, Few head 44.25-45.00. US 1-3 200-260 lb. 40.50-42.00.

New Holland Feeder Pigs

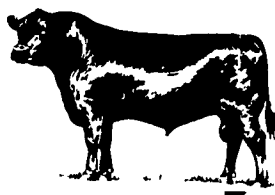
New Holland, Pa.
Wednesday, September 18
Report supplied by Auction

Today 1090
Last Wednesday 621
Last Year 498

TREND: Compared to last Wednesday feeder pigs mostly steady. All pigs weighed on arrival and sold by the hundred weight.

US 1-2: 150 head 24-39 lbs. 76.00-85.00; 21 head 32 lbs. 92.00; 275 head 40-49 lbs. 72.00-82.00; 19 head 47 lbs. 68.00; 346 head 50-59 lbs. 61.00-74.00; 58 head 60-67 lbs. 64.00-67.00; 48 head 70-75 lbs. 62.00-63.00.

US 2-3: 36 head 24-28 lbs. 80.00-82.00; 57 head 35-39 lbs. 66.00-76.00; 18 head 49-72 lbs. 63.00-69.00.



U.S. Inspected Livestock Slaughter

Estimated Daily Livestock

	CATTLE	CALVES	HOGS	SHEEP
Week To Date (Est.)	514,000	49,000	1,270,000	93,000
Same Pd. Lt. Wk. (Est.)	518,000	49,000	1,267,000	90,000
Same Pd. Lt. Yr. (Act)	567,000	49,000	1,302,000	110,000

Chicago Grain Futures

(Closing Bids as of Thursday, Sept. 19)

Mo.	Corn	Wheat	Soybeans	Soybean Meal
Sept.	2.30 ¹ / ₂	2.81 ¹ / ₂	5.18 ¹ / ₄	130.20
Nov.			5.11 ³ / ₄	
Dec.	2.18 ¹ / ₄	2.89 ¹ / ₄		134.90
Jan. '86			5.22 ³ / ₄	136.30
Mar. '86	2.28 ¹ / ₄	2.95 ³ / ₄	5.34 ¹ / ₄	139.20
May '86	2.34	2.92 ³ / ₄	5.44 ¹ / ₂	142.00
July '86	2.36 ¹ / ₂	2.74 ³ / ₄	5.50	144.00

Trends - Corn - Stronger; Wheat - Stronger; Soybeans - Stronger; Soybean Meal - Stronger

Futures Trading

(Closing Bids as of Thursday, Sept. 19)

Mo.	Chicago Cattle	Chicago Hogs	NY Maine Potatoes
Oct.	57.07	40.00	
Nov.			2.08
Dec.	60.07	41.97	
Feb. '86	58.82	42.65	
Apr. '86	59.75	39.80	
May '86			2.61
June '86	60.80	42.67	
July '86		43.20	
Aug. '86	59.35		

Trends - Cattle - Stronger; Hogs - Stronger.

ATTENTION CATTLE CONSIGNORS LOAD LOT SALES EVERY WEDNESDAY

Because of buyer demand, every Wednesday beginning at 12 NOON, we will sell fed cattle in load lots of 10 or more.

Consign your cattle to us on any Wednesday convenient to you. Load lot cattle should be checked in by 9:00 A.M. The buyers are here! The demand is good!

FEEDER PIG SALE

Every Tuesday, Starting at 1:00 P.M.

PLEASE NOTE: All pigs to be graded MUST BE here by 11:30 A.M.

Walter M. Dunlap and Sons

Lancaster Stockyards

Tel. (717) 397-5136

An Old Line Commission Firm Keeping Abreast
With The Times

In this issue

Five Sections

Features

Solanco Fair A22 23
Tomato Harvester A29

Dairy

Dairy Marketing A36
NW District Dairy Show B16
State FFA Dairy Winner B22
Franklin County DHIA D18

Home and Youth

Homestead Notes B 2
Home on the Range B 6
Cook's Question Corner B 8
Kid's Korner B10
Seeding and Weeding B14
Lebanon Flower Show B14
Farm Women News B18

Columns

Now is the Time A10
The Milk Check A36
On being a farm wife B 4
Ida's Notebook B 5
The Micro Way B13
Ladies Have You Heard? B19
The Dairy Business C 4
Brockett's Ag Advice D11

Departments

Farm Calendar A10
Classified Ads B25 C 5
Livestock Latest D 2
Business News D 6
Mailbox Markets D24
Public Sales D26