

Weekly Summary

Harrisburg, PA
Friday, September 20
Report supplied by PDA
14 Livestock Markets

CATTLE: 5857. Compared with 6230 head last week and 6392 head a year ago. Compared with last Friday's summary steers and heifers steady to 1.25 higher; cows unevenly steady; bulls steady to weak; High Choice & Prime 52.75-56.60; Choice 49.50-56.60; Good 45.00-51.50; Standard 41.00-47.00; heifers Choice 48.00-53.50; Good 45.00-50.00; Standard 38.00-45.00;

cows Breaking Utility & Commercial 34.00-39.50; Cutter & Boning Utility 32.00-37.00; Canner & Low Cutter 26.00-34.00; Shells 18.00; bullocks few Good & Choice 46.00-52.00; bulls Yield Grade No. 1, 1200-2300 lb. 43.00-49.00; No. 2, 900-1400 lb. 37.00-45.00.

FEEDER CATTLE: Med. Frame No. 1, 300-750 lb. steers 50.00-63.00; Med. No. 1, 300-700 lb. heifers 40.00-55.00; few Med. No. 1, 350-750 lb. bulls 38.00-52.00.

CALVES: 3970. Compared with 4439 head last week and 5012 head a year ago steady to 5.00 lower; few Prime 90.00-105.00; Choice 70.00-

90.00; Good 55.00-75.00; Standard & Good 90-110 lb. 40.00-50.00; 70-90 lb. 35.00-45.00.

FARM CALVES: Hol. bulls 90-130 lb. 50.00-87.00, mostly 60.00-80.00.

HOGS: 5378. Compared with 6489 head last week and 6964 head a year ago. Barrows & Gilts uneven, mostly steady to .50 lower; No. 1-2, 210-255 lb. 41.00-43.00; No. 2-3, 200-265 lb. 40.00-42.00; No. 2-4, 240-285 lb. 36.00-48.50; few No. 1-3, 140-190 lb. 35.00-40.50; Sows steady to 2.00 lower; No. 1-3, 300-700 lb. 30.00-37.00; few No. 2-3, 450-750 lb. 27.00-32.00; boars 25.00-31.00.

FEEDER PIGS: 1033. Compared with 1150 head last week and 1290 head a year ago. Steady to weak 15-35 lb. 10.00-25.00 per head; 35-55 lb. 24.00-37.00 per head.

3 GRADED FEEDER PIG SALES: 3562. Compared with 2017 head last week and 2038 head a year ago unevenly steady. 30-40 lb. 73.00-92.00; 40-50 lb. 65.00-84.00; 50-60 lb. 57.00-78.00; 60-85 lb. 54.00-67.00; No. 2-3, 20-30 lb. 70.00-92.00; 30-40 lb. 55.00-76.00; 40-50 lb. 50.00-67.00; all per hundred weight.

SHEEP 1008. Compared with 948 head last week and 1652 head a year ago steady to 3.00 lower. High Choice & Prime 70-110 lb. 65.00-71.00; Choice 65-105 lb. 55.00-69.50; Good 50-100 lb. 50.00-60.00; sl. ewes 15.00-30.00.

Leinbach's Produce Auction

September 12, 14 and 17
Report supplied by auction

APPLES-1.20-2.00 1/2 bu.
CANTALOUPE- (Sm.) .10-.30 ea.; (Md.) .25-.45 ea.; (Lg.) .45-.60 ea.
LETTUCE- 2.00-2.75 bu. box.
PEARS- 1.75-2.00 1/2 bu.
PEPPERS- 2.00-4.00 bu.; (hot) 1.00-1.25 1/2 bu.
PLUMS- 1.40-3.60 bu.
POTATOES- 3.50-5.50 bu
PUMPKINS- 40-.80 ea.
RED BEETS- 1.00-2.00 1/2 bu.
TOMATOES- (25 lb. box) 1.00-4.80.
WATERMELON- (Sm.) .10-.40 ea.; (Md.) .50-.75 ea.; (Lg.) 1.00-2.00 ea.

"An Idea Whose Time Has Come."



Brokering
Vitamin Mineral
Premixes
Feed Grade Antibiotics

- ★ CHLORACHEL-50, 50 lb. 86.60
- ★ CSP-250, 50 lb. 121.60
- ★ TYLAN-10, 50 lb. 60.65
- ★ LINCOMIX-20, 50 lb. 249.05
- ★ FUROX-50, 50 lb. 67.45
- ★ SELENIUM-90, 50 lb. 5.48

LANCASTER, PENNA.

1829 William Penn Way
1-800-848-1619

Prices Subject to Availability - Call For Delivery Area

PENNSYLVANIA AGRICULTURE

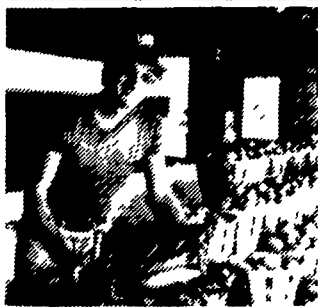


WE'RE GROWING BETTER

Successful farmers plant Hardy Brand™ Corn.



"good yielders at a good price"



"a new record on test weights"



"as the name goes, it's Hardy"



"good yields and fast drydown"

Hardy Brand Hybrid Corns have been scientifically bred for the Northeastern United States. They have proven their potential for high yields, superior standability and high tolerance to predominant disease on farms throughout our market area. Many of our customers have been using Hardy Brand for years for reasons like the ones above.

Outstanding test results. Our new HARDY 760XS and HARDY 370XS have shown excellent yields in these university trials *

University Test	Hardy Brand Variety	Hardy Brand Yield	Plot Average
Cornell University	370XS	120 bu/acre	106 bu/acre
Penn State University	370XS	149 bu/acre	142.2 bu/acre
Penn State University	760XS	162.4 bu/acre	154.1 bu/acre
University of Delaware	370XS	142.5 bu/acre	129.1 bu/acre
University of Delaware	760XS	169.2 bu/acre	144.5 bu/acre
University of Maryland	760XS	167.1 bu/acre	151.2 bu/acre

*Copies of regional test results are available upon request

High yield technologies for today's progressive farmer.

You'll find our complete product line at dealerships throughout Pennsylvania, New York, Maryland, Delaware, Virginia, New Jersey, Ohio and much of New England.



Beachley-Hardy Seed Company
P.O. Box 366 / Camp Hill, PA 17011 / 717-737-4529

Baker MANUFACTURING

**INTRODUCES
FACTORY DIRECT
PRICES**

- WOOD STOVES
- COAL/WOOD STOVES
- FIREPLACE INSERTS - WOOD/COAL
- STOVES FOR HOT AIR AND HYDRONIC SYSTEMS
- FURNACES - HOT AIR
- LOG SPLITTERS
- UTILITY TRAILERS

**COME SEE US AND SAVE AT
ROOT'S AUCTION TUESDAY'S!!!**

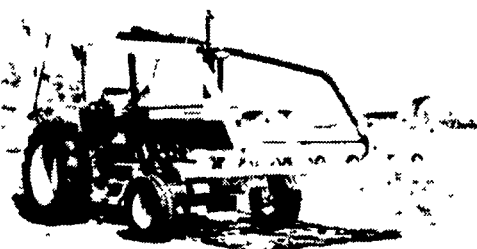
711 E. Mt. Airy Road
Lewisberry, PA 17339
(717) 432-9788

STEFFEN SYSTEMS, INC.

HAY HANDLING EQUIPMENT

**Hay Loaders
Accumulators
Allen Rakes &
Tedders**

**Model 100 "TRACTOR MOUNT"
Hay Loader**



David O. Fink
RD 1 Box 429-F
Germansville, PA 18053