

Rossville, PA, on Rt 17/
approx 4 mis to Alpine
Rd., turn right to sale

Mrs Paul Springer,
Owner. Little IKE
Eichelberger, Auct.

Public Auction Register

Closing Date Monday 5 00 P M
of each week's publication

SAT. OCT. 12 - 6:30PM
Roof Garden Fall Classic
Club Calf Sale of 50
Steers Sponsored by
Somerset Co Beef
Producers Assoc.
Somerset Co
Fairgrounds, Meyersdale,
PA. John Spiker, Auct.

SAT. OCT. 12 - 10AM
Valuable Hshld., Tools, 38
Guns, Ammunition,
Reloading Eq DIREC-
TIONS: From York, PA,
traveling N. on I-83 use
Exit 13, go W. on Rt. 382
to blinking light, turn left
onto Rt 177, go 3 mis. to
Alpine Rd., turn left, first
house on left, OR from

AUCTION SALE

U.G.I. CORP.

SATURDAY, OCTOBER 5, 1985
9:30 A.M.

At 2121 City Line Rd., Bethlehem, Pa.
(In Lehigh Valley Ind. Pk. - across from
A.B.E. Arpt.

Among the many items to be sold are (17)
CARS '78 '76 LTDs, Novas & Valiants, (21)
VANS '78 '73 Chev Ford & GMC PLUS Dump
& Utility Trucks

TERMS. COMPLETE PAYMENT SALE DAY IN
CASH OR GUARANTEED FUNDS ONLY w/\$200
cash required after first item purchased & \$100
after ea. item purchased thereafter

INSPECTION: Oct. 3 & 4, 8 to 4 p.m Write or
call for descrip brochure

VILSMEIJER AUCTION CO., INC.

Box 339, Montgomeryville, Pa. 18963,
(215) 699-5833. (85U063)

COURT ORDERED PUBLIC AUCTION



SAT., OCTOBER 12, 1985
at 8:30 A.M.

At intersection of Rts. 35 and 104 at
blinker light in Mt. Pleasant Mills, Pa.
(Snyder County) take Rt. 104 south for
3 1/2 miles until you come to Fuller's
General Store. At Fuller's Store, make
right and go west for 1 1/4 mile until you
come to 'Y' in road. At 'Y' make left and
proceed 1 more mile until you come to St.
Thomas Church. At St. Thomas Church
make left and go 1/2 mile to Auction Site.
(Coming north on Rts. 11 and 15, take
Rt. 104 North for 5 miles until you come
to Fuller's Store).

REAL ESTATE

Real Estate consists of a 146 acre farm, more
or less, in Perry Township, Snyder County, Pa.,
whereon is erected a two story dwelling with 11
rooms and a front porch. Home has 2 stairways
and could be used as a double house. Property
has a drilled well, however, there are no inside
bathroom facilities at present time. Also
erected on this land is a barn with the milker
pipes installed, corn crib, and other minor
outbuildings. Building's set back in a level lane
for a nice country setting. App. 88 acres of this
farm are tillable with the remaining pasture
and woodland. This property is designated as
Parcel 2, on Map 8 for Perry Township; on the
Snyder County Assessment Maps and is
recorded in Snyder County Deed Book 135,
Page 344.

TERMS: 10% down payment day of Auction -
balance within 30 days. To be offered at 12
noon. For showing of Real Estate call Fay
Willow at (717) 539-8102 or Carson Goodling at
(717) 837-0086. Further terms and conditions
will be given by attorney on day of Auction.

HOUSEHOLD-GUNS-ANTIQUES -COLLECTIBLES-HAY-STRAW -FARM RELATED ITEMS

ESTATE OF SALLIE E. GELNETT
COURT APPOINTED GUARDIANS:
FAY J. WILLOW &
OLIVE M. KERSTETTER

Attorney: Charles J. Ax, Jr.
14 S. Main St.,
Middleburg, Pa. 17842
Phone (717) 837-0086
Dale L. Longacre
Auctioneering
#AU-001899-L
Phone (717) 374-4215
Roger A. Lauver-
Apprentice Auctioneer
#AA-001424-L

FARM MACHINERY CONSIGNMENT SALE

AT RUDNICKS SALES YARD,
ROUTE 213, GALENA, MARYLAND
MONDAY, OCTOBER 7, 1985
AT 10:30 A.M.

FEATURING FARM TRACTORS COMBINES
PLOWS DISCS, CHISEL PLOWS FIELD CULTIVA-
TORS FORAGE HARVESTERS FLAIL CHOP
PERS CORN PLANTERS DRILLS BALERS
RAKES WAGONS PICKUPS TRUCKS ETC
CONSIGNMENTS ARE BEING ACCEPTED DAILY
FOR THIS FALL CONSIGNMENT SALE PLEASE
CALL IF YOU WANT YOUR ITEMS ADVERTISED

HARRY RUDNICK & SONS, INC.
Sales Managers & Auctioneers of
Galena, MD 21635 Phone: 301-648-5601

PUBLIC AUCTION

VALUABLE FARM EQUIP.;
TRUCK; HAY; STRAW
HOUSEHOLD GOODS & ANTIQUES
SAT., OCTOBER 5, 1985
at 10 A.M.

Between (Womelsdorf & Myerstown) turn
N. off Rt. 422 in the Village of
Stouchsburg at the Texaco Station, onto
Marion Drive approx. 2 miles, Berks Co.
Pa.

FARM EQUIPMENT

Int. 424 tractor w/3 pc. hi-lo range wf & pwr.
str; Farmall 460 gas w/fh, TA, pwr. str;
Farmall super C w/fh, etc; culti, chains, fh two
r c planter; & NI frt. end loader w/6' sn bucket
for same; INT. 4121 SKID STR LOADER
W/47" BUCKET; Int. #93-10' sp combine; Int. 3
pt. 3-14" #420 pl; Int. 3 pt. 2-16" #209-A pl; MC 8'
disc; 3 sec. tractor harrow; Brillion 8'
cultipacker; Int. 13 dbl. disc drill on rubber
w/all boxes; Int. 120-7' balance head mower
w/rear draw bar & pto; NH 472 hay bine; JD
640-9' rake; NH 268 baler w/thrower; 2-bale
side wagons; NH 30' bale elev; Int. #7 flail
chopper; NH 351 grinder mixer; NH 28 pto
hopper blower; Int. 51 forage wagon w/Grove
wide track chassis; Int. 1 PR c husker; NI 202
three beater pto manure spreader; Snowco pto
unloading wagon; Meyers 7' sn blade; Onan
4000 watt pulley gen; Cardinal 26' single chain
elev; Little Giant drag elev; 2 bull dozer elec
fencers; pto grass seeder; 2-gal. cattle water
troughs; 16-Jamesway cow stanchions (good);
Surge S-P 22 milker pump; Homelite C-7 chain
saw w/20" blade; 300 gal. gas tank; Dari Kool
225 gal. (ice bank milk tank; 2-45 lb. surge
milkers; SS buckets; dbl. SS tubs; butcher
bench; ci kettle; Snapper SP rotary mower;
garden roto tiller; cattle dehornor; hog
carrier;

TRUCK - 1962 Ford F-350-5 spd. w/7'x9' farm
dump body w/3 yr. old hoist, orig. rubber 35,600
miles.

HAY - Approx. 2000 bales 1st, 2nd, & 3rd. cut-
ting mixed Timothy & Clover.

STRAW - Approx. 800 bales heat & 400 bales
oats straw.

HOUSEHOLD GOODS & ANTIQUES

GE 4 burner dbl. oven elec. stove; majestic
coal or wood stove; IH chest freezer; Maytag
wringer washer; cupboard top dry sink
w/spice drawers; jelly cupboard; oak ornate
side board w/gallery; oak BR furn.; 9'x40"
tavern table w/turned legs formerly used in the
Stouchsburg Marion House Hotel; wdn. dough
box; two drawer tavern table; wdn. tubs; wdn.
flour chest; lard press; butcher ladders;
quilting frames; wdn. chicken crates; 2-2 dr.
metal wardrobes; pot belly stove; stack up tin
veg. dryer; noodle maker; 5 pcs. rag carpet
runner; few sm. pcs blue check linen; child's
button shoes; orange carnival fruit bowl;
painted milk glass chicken on nest; 20-milk
cans; plus many articles too numerous to
mention.

AUCT. NOTE:- These people have worked long
& hard, have sold their farm, equip. has been
taken care of, come & see, a second auctioneer
will start selling household & antiques at 10:30
A.M.

TERMS- Cash or acceptable check

Ordered by-
WARREN AND CARRIE SCHOENER

Conducted by
Ralph W. Zettlemoyer Auction Co. Inc.
(215) 395-8084
Pa. License #AU-001809-L

Refreshments-By
Christ's Lutheran Church



ROOF GARDEN FALL CLASSIC CLUB CALF SALE

SPONSORED BY
SOMERSET COUNTY BEEF PRODUCERS ASSOCIATION

JOHN SPIKER, AUCTIONEER
50 STEERS

HALTER BROKEN TO LEAD, MINIMUM WEIGHT 400 lb.
7-WAY VACCINE, TB TEST AND SHIPPING FEVER
WEANED 3 WEEKS PRIOR TO SALE, SOLD BY THE HEAD
SATURDAY, OCTOBER 12, 1985

6:30 P.M.

SHOW TO BE HELD AT 2:00 P.M.

BREEDS REPRESENTED INCLUDE: SIMMENTAL, LIMOUSIN,
CHIANINA, SALERS, ANGUS AND HEREFORD CROSS BREDS.
SOMERSET COUNTY FAIRGROUNDS
MEYERSDALE, PA.

PUBLIC SALE

OF REAL ESTATE, HOLSTEIN DAIRY COWS,
FARM EQUIP., HOUSEHOLD GOODS
FRIDAY, OCTOBER 18, 1985
9:30 A.M.

LOCATION: Wayne Co., New York - Approx. 9 miles north of
Lyons. Traveling Rt. 14 turn left on to Stell Rd. Follow to sale.
Traveling Rt. 104 take Rt. 14 south approx. 1 1/2 miles to Stell Rd.
Follow Stell Rd. to sale. Sale signs posted day of sale.

170 Acres Sandy Loam Dairy Farm

Approx. 125 A. Tillable, 20 A. Orchard,
10 A. Pasture, Remainder in Woods

2 Story Frame Dwelling

1st Floor - Modern kitchen & dining room combined, living room,
laundry, half bath with shower, full bath, 3 other rooms.

2nd Floor - 5 bedrooms, full bath.

This dwelling is complete with storm windows, hot water wood & oil
combination heating throughout and drilled well, never failed.

Dairy Barn & Improvements

38 tie stalls; Zero 1 1/2" pipeline complete with 4 milker units and 500 gal.
bulk tank; Jamesway barn cleaner; approx. 30x40 loafing area; approx.
34x60 heifer barn; 20x50 silo; 14x36 silo.

FOR INSPECTION CALL: (315) 483-2236 for appointment.

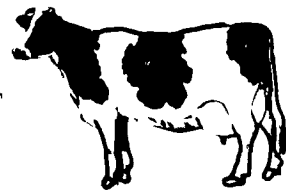
TERMS: 10% down day of sale, final settlement on or before March 1.

50 - Registered & Grade Holsteins - 50

30 Cows 4 Yearling Heifers 16 under a year
Rolling Herd Average - 14,381M 533F

SOME OF THE FEATURES SELLING

Reg. #33 - Earlee-Jee T Threat Bette
Due Sept. 16, '85 to Apollo J
5 yr. old 291 days 17,027M 575F
Reg. #3 - Schoe-Acres Elate Becky
Fresh July 25 - milking 71 lbs.
Reg. #6 - Woodwing Willow Emma
4 yr. old 155 days 10,967M 521F 4.8T
Projected at 17,186M 773F
Reg. #34 - Robdar Star Life Lil
8 yr. old 201 days 11,391M 401F
Projected at 13,694M 488F
Grade #36 - 5 yr. old 18,794M 705F
Grade #25 - 5 yr. old 16,441M 660F
Grade #22 - 7 yr. old due Jan. '86
Last lactation - 20,093M 730F



More Information Day of Sale.
All Cows Tested & Preg. Checked.

Farm Equip.

TRACTORS -

2705 MF Cab - Air - Heat, 24 speed trans, 3 spool H. valve,
20.8x38 tires - less than 1050 hrs.

Ford, good 13.9x28 rubber rear tires, new front tires,
Sauder loader w/snow bucket & forks.

N.H. 55 hay rake; Case 5x16 Hydro/reset plow; Case 16' transport disk; IH
20' transport harrow; JD 495-A 4 row corn planter w/Liquid fert. at-
tachments; 18' Bale King Basket Wagon on 10 ton gear; 16' wooden basket
wagon on 8 ton gear; #8 NH 3 beater forage box on 12 ton gear; Dion 16' 3
beater forage box on 10 ton gear; NH 488 9' haybine; NH 276 baler
w/thrower & super sweep pickup; JD Hay Fluffer; Little Giant 36' trans-
port grain & hay elevator; NH 26 blower; 200 gal. field sprayer w/32'
centery booms; 3 pt. 2 row cultivator; 3 pt. scraper blade; NH elevator for
parts; 3 pt. sprayer tank; Ublers 5 hp self-propelled feed cart; 518 NH
manure spreader w/end gate.

MISC. ITEMS - 275 gal. fuel tank; Lincoln welder; Hydraulic press;
welding stands; chain saw; gear reducers; pipe fittings of all shapes &
sizes; scrap iron; some nuts & bolts; car wheels; Sears & Roebuck garden
cultivator; doors of many sizes; 1978 Artic Cat Cheetha 5000
SNOWMOBILE - 500 cc; more small misc. items not listed.

HOUSEHOLD GOODS - office desk; 3 pc. Depression Dinette set w/6
chairs; sewing machine; dry sink; recliner; folding tables; other small
items.

ORDER OF SALE: Misc. items, household goods, Farm equip., Real
Estate at 12:30, Dairy cattle at approx. 1:00.

TERMS: Cash or good check, I.D. Required, All out-of-state checks must
be approved by owner or auctioneer.

SALE BY:

HARLAN & CHARLOTTE HORST

R.D. 2, Stell Rd.
Sodus, New York 14551
Ph. (315) 483-2236

Sensenig's Auctioneering Service Lic. #AA-000926-L

Atty: Richard Wunder Ph. (315) 946-4844

Lunch Provided - Not Responsible for Accidents