

Old equipment show

ELKTON, MD — The 8th annual OTTO gas engine antique farm machinery show will be held at the David Reed farm, six miles northwest of Elkton on Saturday and Sunday.

Featured will be hundreds of old tractors, engines, and other machines dating to the 1890's. Many pieces of equipment will be in operation for public demonstrations.

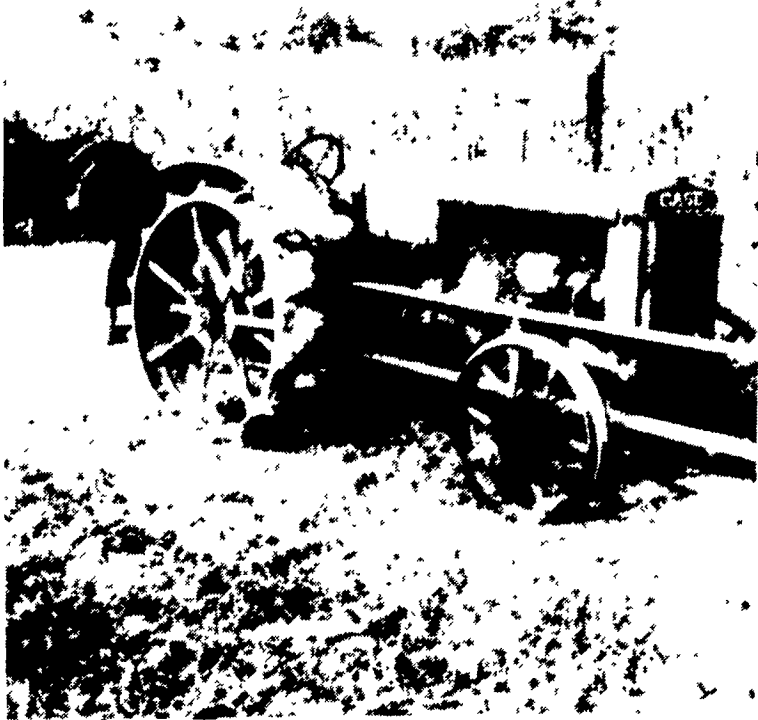
Displays will include rock crushing, water pumping, baker fan, antique cars and fire trucks, antique farm toys, and a variety of

vintage farm machines.

Exhibits are expected to be brought in from the four state area, and from as far as Maine.

Bluegrass music will be provided by "CRYSTAL CREEK" at 7:30 pm. Saturday night. Food and flea market vendors will offer various items for sale.

The show is located at 2167 Blue Ball Road (MD Rte. 545), just one quarter mile south of Pleasant Hill Store.



A 1934 Case is belted up to demonstrate the operation of vintage farm machines at the Elkton machinery show.

Belknap Livestock

Dayton, Pa.

Wednesday, Sept. 18

Report Supplied by PDA

CATTLE 129: Compared with last week's market, Slaughter cows 75 cents-1.00 higher. Couple Good slaughter steers 45.75 & 49.00, One Standard at 45.00. One Choice slaughter heifer at 48.75, Couple Standard 38.75, Few Utility 34.00-36.25. Breaking Utility & Commercial slaughter cows 34.00-37.75, Yield Grade 4-5 30.00-34.00, Cutter & Boning Utility 32.50-36.00, Few High Dressing to 37.00, Canner & Low Cutter 27.50-32.75, Shells down to 24.75. Couple Yield Grade No. 1 1370 lbs. slaughter bulls, 44.75 & 1280 at 43.75, Few Yield Grade No. 2 800-1315 lbs. 40.00-43.00.

FEEDER CATTLE: Steers Few Medium & Large #1 300-430 57.00-69.00, Few Large Frame #2 Holsteins 680-750 lbs. 34.25-36.50; Heifers Medium Frame #1 485-710 lbs. 38.00-44.50, Few #2 300-475 lbs. 35.00-41.00; Bulls Medium Frame 1-2 410-695 lbs. 38.00-50.00.

CALVES 129: Couple Choice 65.00 & 68.00, Few Good 57.50-62.00, Few Standard 45.00-53.50, Standard & Good 90-120 lbs. 42.00-50.00, 65-86 lbs. 34.00-44.00, Few Utility 50-75 lbs. 20.00-32.00.

FARM CALVES: Holstein bulls 90-130 lbs. 55.00-71.00, One at 75.00, Few 50.00-55.00. Beef Cross Bulls and Heifers 50-100 lbs. 40.00-48.00.

HOGS 118: Barrows & gilts \$1.00-1.50 higher. US No. 1-2 215-245 lbs. barrows and gilts 41.00-42.50, Couple small lots 44.00-43.85, No. 2-3 210-250 lbs. 41.00-41.50, Few No. 2-4 235-255 lbs. 39.50-40.00, No. 1-3 185-195 lbs. 39.00-40.00, One Lot 106 lbs. at 45.00. Sows - \$2.00-3.00 lower. US No. 1-3 260-350 lbs. sows 30.00-33.00, One at 36.00, Few No. 2-3 340-720 lbs. 29.25-30.50.

FEEDER PIGS 31: US No. 1-3 30-35 lbs. feeder pigs 18.00-20.00 per head. One Lot No. 1-3 100 lbs. 40.00 per head. **SHEEP 5:** Few Good &

Choice 75-110 lbs. Spring Slaughter Lambs 50.00-58.00. **GOATS 12:** 5.00-40.00.

Chambersburg Livestock

Chambersburg, Pa.

Thursday, September 19

Report supplied by PDA

CATTLE: 237. Sl. cows strong 1.50 higher; 1 Choice 1600 lb. at 50.00; 1 Good 45.25; heifers few Good 43.50-47.00; few Standard 37.75-41.00; Breaking & Commercial cows 36.25-39.60; Cutter & Boning Utility 34.85-37.25; Canner & Low Cutter 30.50-34.85; Yield Grade No. 1, bulls 1275-2135 lb. 43.25-48.85.

FEEDER CATTLE: Heifers few Large No. 1, 425-610 lb. 43.50-50.50.

CALVES: 443. Few Choice 76.00-95.00; few Good 55.00-65.00; few Standard & Good 110-125 lb. 49.00-52.00; 75-105 lb. 42.00-50.00.

FARM CALVES: Hol. bulls 90-130 lb. 55.00-80.00; Hol. heifers few 90-115 lb. 60.00-72.00.

HOGS: 48. Few US No. 1-2, 220-230 lb. 42.10-42.35; Sows 1-3, 330-580 lb. 32.00-35.75.

FEEDER PIGS: 42. Few US No. 1-3, 15-25 lb. 10.00-14.00 per head; few 45-50 lb. 24.00-26.50 per head.

SHEEP: 44. Choice 100 lb. 72.50.

GOATS: 3. Few Large 25.00-34.00.

New Holland Dairy

New Holland Sales Stables

Wednesday, September 18

Report supplied by auction

Reported receipts of 92 cows, 72 heifers, and 0 bulls.

Load of PA fresh cows, 700.00-900.00.

Wisconsin fresh cows, 730.00-1070.00.

Load of NY fresh cows, 675.00-1200.00; springers 875.00-1035.00.

Load of NY fresh cows, 650.00-1250.00.

Load of Canada fresh cows, 680.00-925.00; springers 600.00-910.00.

Locally consigned cows 385.00-900.00.

Springing heifers 480.00-795.00.

Open heifers 275.00-460.00.

Indiana Livestock

Homer City, Pa.

Thursday, September 19

Report supplied by PDA

CATTLE: 276. Sl. steers 1.00 higher & sl. cows .50-1.00 higher; few High Choice & Prime Sl. steers 52.00-53.25; Choice 49.50-52.25; Good 46.50-49.60; Standard 42.70-46.70; Choice heifers 48.00-50.00; Good 46.00-48.00; Standard 40.00-44.50; Breaking Utility & Commercial cows 34.00-37.70; Cutter & Boning Utility 31.00-34.50; Canner & Low Cutter 28.00-31.50; Yield Grade No. 1, bulls 1200-1760 lb. 41.00-46.50; few No. 2, 1000-1400 lb. 39.00-42.00.

FEEDER CATTLE: Few Med. No. 2, 480-680 lb. steers 39.00-44.00; heifers Med. No. 1, 500-700 lb. 42.00-47.00; Large No. 2, 700-900 lb. 35.00-39.00.

CALVES: 169. Vealers mostly steady, a few Good 55.00-65.00; Standard & Good 90-120 lb. 44.00-50.00; 60-85 lb. 41.00-45.00.

FARM CALVES: Hol. bulls 90-125 lb. 56.00-74.00.

HOGS: 109. 1.00 higher; US No. 1-2, 215-245 lb. 42.50-43.25; No. 2-3, 205-250 lb. 42.00-42.60; few No. 2-4, 200-250 lb. 40.00-42.00; Sows US No. 1-3, 350-600 lb. 36.00-37.50; No. 2-3, 400-680 lb. 35.00-36.80.

FEEDER PIGS: 5.

SHEEP: 38. Choice 75-94 lb. 62.00-65.00; few Good 60-70 lb. 56.00-58.00.

SLAUGHTER SHEEP: 18.00-23.00.

GOATS: 13. 13.00-41.00 per head.

LANDHOPE DAIRY FARM



Our farm will be open for public inspection from 10 A.M. to 4 P.M.

We have combined our 2 dairy farms into one large modern "State of the Art" Dairy Operation. Tours will be provided in order for you to observe & understand the following features:

- Westfalia Computerized Milking Equipment
- 6,000 Gallon Mueller Tank
- Refrigerated Receiver And Plate Cooler
- Manure Management thru the use of Lagoons
- Single & Group Calf Hutches
- T.M.R.
- Fence Line Feeding System

The planning & construction of our new modern facility was completed by the following companies:

Wilkinson Enterprises, Inc.

Fisher & Thompson Associates

Rufus Brubaker Refrigeration

Directions from Kennett Square, Pa. to Landhope Dairy Farm: Go south on U.S. Rt. 1 bypass to Toughkenamon exit (Newark Rd.). North on Newark Rd., 1.3 miles, look for sign on right.