



WENGLERS INC.

251 SOUTH RACE STREET, MYERSTOWN, PA 17067

PHONE: 717-866-2135

NIGHTS,
PHONE:

717-866-7147

or

717-273-9089

TELEX 316290

JOHN DEERE TRACTORS

| | |
|-------------------------------------|---------------|
| A | \$750 |
| A w/Widefront | \$1500 |
| G | \$1500 |
| 730 Gas-Try | \$2900 |
| 3010 Gas-Try | \$2900 |
| R-New Paint | \$2900 |
| 730D-Try-3 pt.-Direct Ele. | \$3200 |
| 730 Diesel-Try-3 pt. | \$3900 |
| JD 2510 Gas-Try | \$3900 |
| 730 Diesel-WF-3 pt. | \$4500 |
| (2) JD 301-WF-3 pt.-1971 | Choice \$4850 |
| 4020D-Diff.-1967-As Is | \$5400 |
| 3020 Diesel-WF-3 pt.-Rollbar-Syncro | \$5900 |
| (2) JD 2010 w/Loader | Each \$5900 |
| JD 301 w/Mower-Clean | \$5900 |
| 5020 | \$5900 |
| 3020 Diesel-WF-3 pt.-Side Console | \$6900 |
| 4020-Very Nice | \$7500 |
| 5020-Duals | \$7900 |
| 5020-Cab | \$7900 |
| 4320-Cab-3800 Hrs.-Nice | \$10,700 |
| 4230-4 WD-Cab-Quad-Excellent | \$15,500 |

MASSEY FERGUSON TRACTORS

| | |
|---------------------------|--------|
| 44 Gas | \$795 |
| 35 Diesel | \$2900 |
| 35 Gas-WF-3 pt. | \$3450 |
| 65 Utility Diesel | \$3950 |
| 180-Diesel-Nice-Big Tires | \$4900 |
| 165 w/Loader-Gas | \$4900 |
| 165 Diesel-Nice | \$5450 |
| 1080D-1969 | \$5900 |
| 1150-Cab-Duals-Sharp | \$8900 |

FARMALL TRACTORS

| | |
|-------------------------------|-------------|
| H-Fenders-Clean | \$1500 |
| Super C | \$1650 |
| 460-Gas-Try | \$1900 |
| (2) 560 Gas | Each \$2400 |
| Super C w/Cult-Sharp-Sharp | \$2650 |
| Super AV w/Cultivator | \$2900 |
| 460 w/Loader | \$2900 |
| 560-D-WF-FH | \$3500 |
| 350 Utility w/Rotary Mower | \$3600 |
| 504 Diesel-Utility-3 pt.-P.S. | \$3950 |
| 140 w/Woods Rotary Mower | \$3950 |
| 140, Cult, FH | \$3950 |
| 240-Gas-w/Loader-FH-2X Plow | \$4450 |
| 560D-Clean-Wide Front-FH | \$4500 |
| 374-Cab-Clean | \$4950 |
| 544 w/Ind. Rotary Mower | \$5900 |
| 574-Cab-1975-4300 Hours-Nice | \$5900 |
| 656D-Hydro-Clean | \$6500 |
| 574-Cab-1977-Nice | \$6500 |
| 966-WF-3 Pt. | \$6500 |
| 484-Cab-1979-2200 Hours | \$6900 |
| 784-Cab-3500 Hours-1978 | \$6900 |
| 684-Cab-1980-Nice-2300 Hrs. | \$7900 |
| 584 Diesel-1980-1100 Hours | \$8900 |
| 1456-Cab-Nice | \$8900 |
| 766-Cab-Low Hrs.-Sharp | \$9800 |
| 1066 w/Cab & Duals-1972-Nice | \$9900 |
| 784-4 WD-Cab | Coming In |
| 574-Cab | Coming In |

OLIVER & WHITE TRACTORS

| | |
|----------------------------------|----------|
| 1650 Gas-New Tires | \$4500 |
| 1800-Cab-Nice | \$4950 |
| 4-180 Duals, Cab, 3 pt. PTO-1977 | |
| Air-1800 Hours | \$14,900 |

IMT, LONG & OTHER TRACTORS

| | |
|---------------------------|----------|
| Long 460-1978-As Is | \$2500 |
| (2) Long 610-Hi-Clear | \$6900 |
| IMT 539-New | \$6995 |
| Mitsubishi Bison-4WD-Demo | \$6984 |
| 360 4 WD-New-Was \$13,690 | \$9873 |
| 460 4 WD-New-Was \$15,373 | \$11,119 |
| 310 4WD w/Loader-New | \$11,886 |

CASE TRACTORS

| | |
|------------------|--------|
| 930 Diesel | \$2900 |
| 1070 w/Cab-As Is | \$4500 |
| 1070-WF-P.Shift | \$4500 |

FORD TRACTORS

| | |
|------------------------------|-------------|
| 6000D-Wide Front | \$2000 |
| 3000 w/Loader | \$4600 |
| 4000 w/Loader | \$5900 |
| 2000 w/Mower-CLEAN | \$6500 |
| 8000D-Weights-38" Rubber | \$6500 |
| 3400 w/Loader | \$6900 |
| (2) 6600-Cab-1977-Dual Power | Each \$6900 |
| 7600-Cab-1977 | \$6900 |
| 6600-Cab-1977 | \$6900 |
| 6600D-Flat Deck-1976 | \$7900 |
| 4600D-1981 | \$7900 |
| 8000D-Cab-Duals-Wts. | \$7900 |

ALLIS CHALMERS TRACTORS

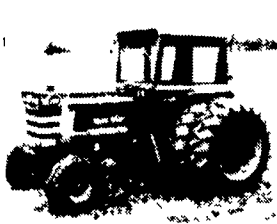
| | |
|-----------------------------|--------|
| D19 Diesel-has Loader | \$2850 |
| 7000-As Is-Cab | \$4900 |
| 190 XT Series 3-Cab-Nice | \$6900 |
| 200-No Cab-Nice | \$6900 |
| 220-Very Nice | \$6900 |
| 185-Wts.-Very Nice | \$8500 |
| 185 Cab-Air-1978-2200 Hours | \$9900 |

FINANCING AVAILABLE WITH 20% DOWN-UP TO 4 YEARS

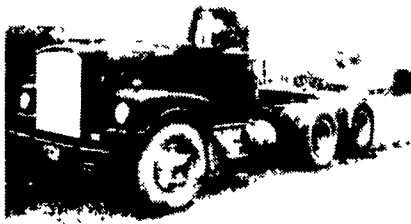
EXCEPTIONAL BUY



IH 574 Cab, 1975
Nice \$5,900
IH 574 Cab, 1977
Nice \$6,500



MF 1150 Sharp, Lots of
Options, Only 2000 Hours
Cheap Power \$8,900



White Truck Tractor
Cummings, Full Screw, Wetline
Runs, Looks Poor
\$2,750



Ford 6600 - 1977's
Choose From 3 With Cabs
(2) Have Dual Power
CHOICE \$6,900



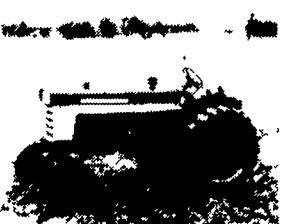
AC 185 Cab, Air, 1978
2200 Hours, Sharp
ONLY \$9,900



JD 5020 - Runs Good
Good Buy \$7,900



JD 730D, Direct Electric,
3 Point, Nice \$9,200



IH 560 Diesels - From
Average to Excellent
\$3,500 to \$4,500
IH 560 Gas - Narrow Front
ONLY \$2,400



IH 684-1980-2300 Hours
TA-Very Clean-\$7,900

SITREX 3 PT. WOODSAWS

\$450

Limited Time
Only

\$336

ON STOCK 25 14



Tandem Axle Fertilizer
Spreader
ONLY \$2,950



SITREX P.T.O. TEDDERS
SPECIAL EARLY ORDER
For 2-Wheel Pulls or 3 Pt
For 1986 April Shipment
\$895

\$100 Down Limited Time Offer

4 Wheel Pull ... On Stock \$1795
3 ONLY
REDUCED FOR CLEARANCE \$1595

CONSTRUCTION EQUIPMENT



NEW 1985 TRAILERS ON SPECIAL

• 2 Axle, 4 Ton, 14 Ft. \$1,595

TRACTORS WITH LOADERS

| | |
|----------------------|------------|
| IH 460 | \$2900 |
| Case 530-As Is | \$3900 |
| IH 240 | \$4450 |
| Ford 3000 | \$4600 |
| MF 165 | \$4900 |
| (2) JD 2010 | Ea. \$5900 |
| Ford 4000 | \$5900 |
| Ford 3400 | \$6900 |
| Long 310-4WD, New | \$11,900 |

LOG SKIDDERS

| | |
|------------------------------|----------|
| Ford Log Hog | \$3725 |
| Athey As Is | \$5900 |
| Franklin 130B | \$5900 |
| IH S7C | \$8500 |
| Clark 666B-1975 w/Grapple | \$11,700 |
| JD 440C-1978 | \$21,800 |
| JD 640 | |
| w/Grapple | \$21,900 |
| JD 440C-1980 | \$23,800 |
| JD 640 | \$26,900 |

FORKLIFTS

| | |
|--------------------------------------|----------|
| 4000 lb., Solid Tires, Side Shift | \$1500 |
| Yale 4000 | \$2500 |
| Erickson 5000 lb.-RT | \$4900 |
| Clark 8000 lb.-RT | \$5900 |
| AC 4000 Diesel | \$7900 |
| Hyster 10 Ton | \$12,000 |
| Sanderson SB70 | \$18,500 |

SKID STEER LOADERS

| | |
|--------------|--------|
| Gehl - As Is | \$1500 |
| Case 1740D | \$5800 |
| Melroe 731D | \$6800 |

DOZERS

| | |
|-------------------------|----------|
| Case 310 | \$4850 |
| IH TD6-62 Series | \$5400 |
| JD 350B | \$9800 |
| JD 450 | \$9800 |
| Case 350 6 Way | \$11,400 |
| Case 1150B 6 Way | \$14,900 |
| Case 350B 6 Way-1979 | \$16,900 |

BACKHOE ATTACHMENTS

| | |
|-----------------------|--|
| JD-Case-AC-Long 3 pt. | |
| McConnell 3 pt. | |

BACKHOES

| | |
|-----------------|------------|
| Temco 8-New | \$3750 |
| Case 530-As Is | \$4900 |
| IH 3616-As Is | \$5850 |
| Case 480 | \$9750 |
| Ford 4500 Cab | \$10,750 |
| Case 580B | \$11,900 |
| Case 580B | \$12,500 |
| Ford 5550 ROPS | \$12,800 |
| JD 310, Cab | \$14,750 |
| JD 310, Cab | \$15,250 |
| Ford 550 Cab | \$18,500 |
| JD 410, Cab | \$18,750 |
| JD 410, Cab | \$19,750 |
| JD 410-Cab-1979 | \$21,750 |
| JD 410-Cab-1980 | |
| 500 Hrs. | \$23,750 |
| (2) JD 310A | \$18,750 |
| | & \$19,500 |

OFF ROAD ROCK DUMPS

| | |
|--------------------------------|----------|
| (2) Mack 25 Ton Rock Trucks | \$76,800 |
|--------------------------------|----------|

RUBBER TIRED LOADERS

| | |
|------------------|-------------------|
| Hough H25 | \$2500 |
| Little Dipper | \$2900 |
| Michigan 55 | \$3900 |
| MF 356 | \$4900 |
| Hough 30R | \$5900 |
| Trojan Diesel | \$5900 |
| Hough Diesel | \$6900 |
| Case W9D | \$6900 |
| Terex 72/31-1972 | |
| | \$19,500 |
| (2) Ford A62-Cab | \$22,800 & 27,800 |
| Terex 72/31-1977 | |
| | \$27,500 |
| Case W20 | \$27,500 |
| Ford A64 1978 | \$28,500 |
| Michigan 75B | \$28,500 |
| Michigan 55B | \$29,500 |
| Cat 920 | \$29,500 |
| Case W26B | Coming In |

MISC. CONSTRUCTION

| | |
|-------------------------------|------------|
| (60) Used Hoe Buckets | From \$100 |
| (30) Loader Buckets | From \$100 |
| (30) Set Forklift Forks | From \$300 |
| Case 580B Cab | \$750 |
| New 3 pt. Winch | \$1495 |
| JD 350 Winch | |
| Attach | \$1850 |
| Limb Chipper | \$4500 |
| Sheepsfoot Roller- Nice-9' | \$4500 |
| AC D Grader | \$5900 |
| Wabco Self Loading Pan | \$7900 |

CRAWLER LOADERS

| | |
|---------------------------------|-----------|
| Oliver OC3 | \$2500 |
| Case 310 | \$3900 |
| AC H3 w/Ripper | \$6900 |
| Cat 951A | \$12,500 |
| JD 350B | \$12,500 |
| Case 450 w/Cab 4 in 1 | \$13,500 |
| Case 450-Cab | \$14,500 |
| Case 450 w/Cab 4 in 1 | \$17,500 |
| Cat 951 | \$17,500 |
| Case 450 w/Cab 4 in 1 Hoe | \$18,500 |
| Cat 941 w/4 in 1 bkt | \$21,700 |
| Case 450 w/Hoe Cab-4 in 1 | \$23,500 |
| (3) Cat 931 Cab | \$23,500 |
| Case 850B-4 in 1- Ripper-Cab | \$29,500 |
| Case 450 | Coming In |

TRAILERS

| | |
|-------------------------------|----------|
| 1985 2X 4 Ton | \$1595 |
| 1985 3X 9 Ton | \$4500 |
| 1985 12 Ton | \$6800 |
| 1978-25 Ton Fold Gooseneck | \$24,500 |

EXCELLENT SELECTION OF AFFORDABLE USED EQUIPMENT