

SPECIALIZING IN GARAGE SERVICE JACKS

Used Rebuilt Floor Jacks 1 1/4 to 10 Ton

REPAIRS NEW & USED
WALKER • AUSCO
• HEIN • WERNER
WEAVER • BLACKHAWK

BEARTOWN HYDRAULICS

Rt. 322, Midway Between Honey Brook & Blue ball
Mon, Tues, Thurs & Fri 7 AM - 5 PM
Call For Wed., Sat & Even Hours
(717) 354-5649
Ron Zimmerman

KEYSTONE FORD TRUCK SALES, INC.

Trucks are our only Business
Interstate 83 at 322E, 470 Penhar Rd.
Harrisburg, Pa. 17111
717-564-6661

PA Watts 1-800-692-6235

Parts & Service Open 24 Hours A Day
Sunday Midnight to Friday Midnight

- 1983 F-350 12' Stake, 6.9 Diesel engine, 4 speed, PS, PB, 10,000 GVW.
- 1983 F-350 C&C, 6.9 Diesel engine, 4 speed, PS, PB, 10,000 GVW.
- 1985 F350 Crew Cab Pick up, 6.9 diesel, PS, PB, 4 speed, with electric overdrive, loaded.
- 1985 E-350, 10' parcel delivery, 306 cyl., auto, PS, PB
- 1985 E-350, 14' Cargo master body, 6.9 diesel, auto, PS, PB
- 1981 LN8000, C & C, 210 Cat, 5+2, AB, tag axle.
- 1980 LNT9000, 8V71T, box sleeper, PS, air cond., generator, 13 speed.
- 1979 LN7000, 220" WB, 175 Cat, 5+2, PS, AB, 27,500 GVW.
- 1978 C7000, 175 Cat, 5+2, PS, 24' van body.
- 1968 IH model 220, 549 V8 gas, 18' van body w/lift gate & side door, 5 speed, AB, 35,000 GVW.
- 1969 Int'l, 10' dump, 549 V8, 5+2, AB, 34,000 GVW, sharp truck.
- 1979 LNT9000, 290 Cummins, 9 speed, PS, 50,000 GVW. 12 front, 38 rear.
- 1982 Ford LNT9000, NTC 300 Cummins, 9 speed, 12 & 38 axles, PS, 125,000 miles, super clean.
- 1978 Ford CLT9000, double bunk, 400 Cummins, 13 speed.
- 1985 Fiesta Mini Home with roof air.
- 1978 Chevrolet, 22' Coachman motor home, 34,310 miles with awning.
- 1978 Chevrolet 23' Country Squire motor home.

73 Ford F250 w/tilt bed & wench, GVW 21,000, 5&2, V8 gas, good condition, best offer. Lease or purchase. 717-323-9465.

73 Ford F600 Cattle truck, 18' bed w/slide door & drop gate, excellent condition, best offer. Lease or purchase 717-323-9465

FOR SALE

(2) 4WD Heavy Duty Pickups
1-Dodge 1-Ford
Equipped w/crop sprayers, Model 300 easy-on and off, Reo lime and fertilizer spreader sower-type booms.

(1) 2100 gal. Molasses tank for on or off flat bed truck.

Equipment above has been well maintained

814-735-4727

CROWN VICTORIA-T BIRD-LYNX-TOPAZ-MARQUIS-GRAND MARQUIS

MARK VII-PICKUPS-BRONCOS-BRONCO II-STAKE BODY-CREW CAB-SUPER CAB.

SHEEHY FORD-LINCOLN-MERCURY, INC.

And The Valley's Best Selection Of

NEW & USED FORD TRUCKS

NOW YOU CAN TAKE ADVANTAGE OF THE BUYING POWER OF FIVE SHEEHY DEALERSHIP LOCATIONS
CHOOSE FROM



OR UP TO **\$1,000⁰⁰** REBATE ON FORDS
OR UP TO **\$3,000⁰⁰** REBATE ON LINCOLNS
OR UP TO **\$1,000⁰⁰** REBATE ON SELECT FORD TRUCKS

SHEEHY'S YEAR-END CLEARANCE SALE
Is Now In Progress.

SHEEHY FORD Dealerships Last Year Alone Sold Over 15,000 Cars & Trucks Why Not Take Advantage Of The Buying Power Of 5 Dealerships?

SHEEHY LEBANON

9-9 DAILY; 9-5 SATURDAY SHEEHY HOTLINE 717-272-7871 OR 533-5293
UNLESS THIS EMBLEM IS ON YOUR CAR OR TRUCK - YOU PROBABLY PAID TOO MUCH

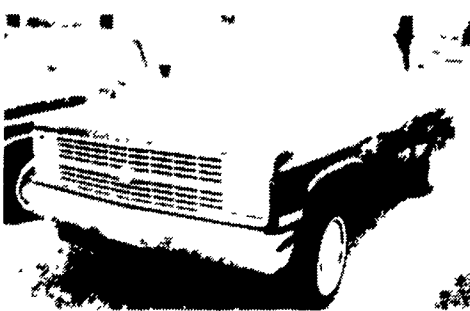
FORMERLY R&J MOTORS - 20TH & CUMBERLAND - LEBANON
LEBANON COUNTY'S ONLY FORD-LINCOLN-MERCURY - LIFETIME SERVICE GUARANTEE - AAA APPROVED

TEMPO-CROWN VICTORIA-T BIRD-LYNX-TOPAZ-MARQUIS-GRAND MARQUIS-LTD.

USED TRUCKS



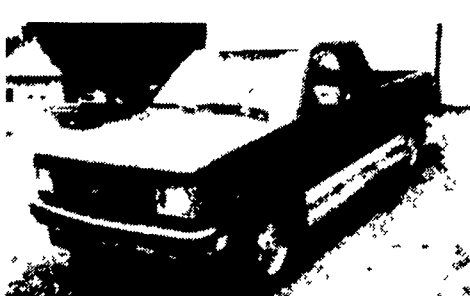
'81 Chevy 1/2 Ton Diesel, AT, PS, PB, AM-FM, 2 Tanks, Excellent Condition **\$4,750**



'83 Chevy 1/2 Ton 4x4, V8, PS, PB, Auto Overdrive, Aux. Fuel, AM/FM Cassette Player, 36,000 Miles **\$8,850**



'83 Chevy Scottsdale, V8, Auto., PS, PE, AM/FM, Aux. Fuel, 28,000 Miles **\$7,950**



'84 Chevy S10 4x4 6 Cyl., 5 Speed, PS, PB, AC, AM/FM Stereo, Tilt Wheel, 14,000 Miles **\$10,800**

MARTIN'S AUTO SALES

725 E. Main St.
New Holland, PA 17557
(717) 354-9967

FREE CATALOG! Describing numerous PA farms, camps, acreage tracts, cottages, homes and businesses Write Dept LF, WEST REAL ESTATE AGENCY, INC., 5528 William Flynn Highway, Gibsonia, PA 15044 1-800-922-1235

Franklin & Huntingdon Counties Dairy & General Farms KOONS REAL ESTATE, INC., 717-597-8300 or Roger Wildeson, 717-263-5702

Huntingdon County Country Home on 5 1/2 acres, 4 bdr, newly remodeled, barn, building, 2 streams, excellent hunting, near Raystown Resort 814-447-3952 or 814-447-5522

If you are planning to buy or sell your farm, call Lawrence Stouffer, our farm manager at Heyworth Realty, 301-733-3701 or 717-597-2584 We have qualified buyers

If you're looking for a farm, land or have any other real estate needs, you'll find what you want in the Real Estate classifieds 717-394-3047 or 717-626-1164

Kibler farm for sale 2 1/2 miles east of Greensboro, Maryland (Eastern Shore) on Kibler road 145 acres with two story farmhouse and buildings Phone 301-479-2720

For Rent. New Barn, 30 acre pasture, 8 stalls \$600/mo. Warwick Twp 215-286-0410.

New York Farm For Sale Beautiful 17 room restored Victorian home situated on approx. 225 acres. (160 +/- tillable) Overlooking Cayuga Lake. Priced to sell. Will divide. Call PCA of the Finger Lakes, 315-253-7353.

NORTHERN NEW YORK DAIRY FARM: 40 cows, young stock, equipment, feed, real estate. Decent operation, \$160,000 Large portion FHA available 315-328-4646.

REAL ESTATE WANTED Chester Co., Eastern Lancaster Co. 5-10 acres, must perc. Prefer woods and open. No swamp or floodplain, no highway frontage. Large down payment, Owner Financing Show me what you have 215-565-8826.

SOMERSET CO., PA FOR SALE

DAIRY FARM COMPLEX 2 mis SW of Somerset, 107 free stall barn, 80x165', heifer barn 30x108', machine shed 40x80', 1800 ton maintenance free concrete trench. Plus Brick ranch style home w/attached 2 car garage Buildings of new type construction on 46 acres prime developing land. All for \$276,000 Also milk store for lease 400 acres of land For Sale or Rent. Phone 814-445-6841 Eves. 814-445-2227

WANTED: Cabins and Summer Homes in Perry, Juniata and Franklin Co.'s. Buyers looking for hunting camps. CENTURY 21 BRENNAN, Ted Loy, 717-789-3483.

WANTED TO RENT: Dairy farm, 35-45 stalls. 717-866-7342.

WANTED. For lease w/option to buy. Dairy farm suitable for 50-60 cows. 215-845-2524.

WANTED TO RENT: Small barn and fenced pastures for small horse operation Reading Area Possible lease/purchase on secluded 10-20 acres w/no buildings. Send details to Lancaster Farming, P.O. Box 366, L-68, Lititz, PA 17543

14 acres open ground in Southern Lancaster Co., great view all around, 2 houses, small horse barn, \$79,900. Call Coates Realtor, 717-442-4134 After hours call, 717-354-9534