

# Livestock market and auction news

## Lebanon Valley Livestock

Fredericksburg, Pa.  
Tuesday, August 27

Report Supplied by PDA

**CATTLE 245:** Few High Choice & Prime slaughter steers 3-4 1105-1280 lbs. 53.25-53.75, Choice 2-4 985-1455 lbs. 51.00-53.254, Few Good 45-52.00, Few Standard 43.75-47.00, Good & Choice holsteins 43.25-46.75, Standard 42.00-44.00, Few Utility & Low Standard 38.00-43.25. Choice slaughter heifers One 49.00, 3-5 865-1100 lbs. 44.75-47.75, Few Good 40.75-43.75, Few Standard 38.00-40.25. Breaking Utility & Commercial slaughter cows 37.25-39.25, One 39.75, Cutter & Boning Utility 33.75-37.50, Few 39.50, Canner & Low Cutter 30.75-33.50, Few 34.50, Shells down to 23.75. One Good slaughter bullock 50.00, Few Standard 45.00-48.25, Few Utility 38.25-42.50. Yield Grade No. 1 1275-1810 lbs. slaughter bulls, 47.25-50.75, One 51.25, Few Yield Grade No. 2 1380-1430 lbs. 46.25-46.75.

CALVES 250: One Prime Vealer

465 lbs. slaughter calf 68.00, Standard & Good 90-115 lbs. 45.00-50.00, 65-85 lbs. 40.00-44.00, Utility 45-95 lbs. 30.00-40.00 few down 25.00.

**FARM CALVES:** Holstein bulls 90-130 lbs. 55.00-75.00, few down 46.00.

**HOGS 235:** (Supply included 80 head sows) Few US No. 1-2 220-260 lbs. barrows & gilts 42.10-43.00, No. 2-3 215-265 lbs. 41.60-42.10, Lot 42.60, Few No. 2-4 245-270 lbs. 40.50-40.85, Lot No. 3-4 245 lbs. 36.50, Lot 1-3 170 lbs. 38.50. Sows - US No. 1-3 300-640 lbs. sows 33.50-36.00, Lot 5 head 36.50, No. 2-3 310-660 lbs. 30.50-34.00, One 35.50. Few Boars 29.25-31.50.

**FEEDER PIGS 7:** No market test.

**SHEEP 5:** Few Choice 65-120 lbs. 60.00-64.00. One Slaughter Sheep 15.00.

**GOATS 5:** 11.00-12.00 per head.

## Oklahoma City Cattle

Wednesday, August 28

Report Supplied by USDA

Estimated Receipts: 6000

Same Day Last Week: 2966

Feeder steers and heifers opened steady to 50 cents higher, instances 1.00 up on steers suitable for futures delivery; later trade both classes steady to 1.00 lower with No. 1 muscled cattle near steady and the lower grades often at the full decline. Late demand fair only. Bulk supply medium and large frame 1 thru 2 600-950 lb. steers and 500-750 lb. heifers.

**FEEDER STEERS:** Medium and large frame 1 240 lb. thin 90.00; 250-400 lb. 74.50-82.00; few 385-450 lb. 70.00-72.50; 500-600 lb. 63.30-68.10; 600-700 lb. 59.80-63.60, lot 610 lb. 64.10; 700-750 lb. 58.75-63.60 mostly 58.75-59.70; 750-800 lb. 57.00-58.75; 800-900 lb. 55.10-58.70; 900-1050 lb. 51.50-54.70.

Small frame 1 500-675 lb. 52.00-59.50.

Medium and large frame mixed 1-2 460 lb. 68.75; 600-650 lb. 58.40-59.50; 700-800 lb. 55.00-59.30; 800-820 lb. 55.90-56.90; 925 lb. 50.00 medium and large frame 2 440 lb. 58.00; 575-700 lb. 54.75-58.70; 700-800 lb. 51.00-55.20; 850 lb. 50.10; 1030 lb. 47.60; dairy-cross 600-800 lb. 43.70-46.25.

Large frame 2 holsteins 208 lb. 66.00; 218 lb. 61.50; 885 lb. 42.25.

**FEEDER HEIFERS:** Medium few large frame 1 230 lb. slightly thin 74.00; 350-400 lb. 64.50-67.50; 445 lb. fleshy 61.25; 500-600 lb. 55.00-60.00; 600-700 lb. 54.70-56.10; 700-800 lb. 53.00-55.40.

Medium and large mixed 1-2 485-600 lb. 53.00-55.00; 600-700 lb. 52.50-54.70; 700-775 lb. 51.50-50.05; 805 lb. 48.50.

Medium and large frame 2 450-500 lb. 47.50-52.25; 500-600 lb. 47.00-53.50; 600-700 lb. 47.00-52.00; 700-750 lb. 48.00-50.50.

## Farmers Livestock Auction

Duncansville, Pa.

Monday, August 26

Report Supplied by PDA

**CATTLE 147:** High Ch. & Pr. sl. steers none, Choice 50.25-51.75, High Good & Low Ch. 47.50-50.00, Good 44.00-46.50, Good & Choice holsteins 41.50-44.50, Standard 38.50-40.50, Utility 35.00-37.25. Choice sl. heifers 47.50-50.00, Good 44.50-45.75, Standard 40.00-41.75, Utility 35.00-38.75. Breaking Ut. & Commercial sl. cows 36.50-39.25, Cutter & Boning Ut. 34.50-37.00, Canner & Low Cutter 32.50-35.75, Shells down to 25.00. Choice sl. bullocks none, Good 43.50-46.50, Standard 40.50-42.75, Utility 35.00-38.50. Yield Grade No. 1 1200-1450 lbs. sl. bulls, 44.00-46.50, Yield Grade No. 2 1200-1500 lbs. 42.50-44.00.

**FEEDER CATTLE:** Steers Good 50.50-52.50, Standard 42.50-46.50, Heifers Good 50.00-51.50, Standard 35.50-45.50, Bulls Good 45.00-48.00, Standard 35.00-40.50.

**CALVES 269:** Choice 71.50-78.50, Good 60.50-67.50, Standard 50.00-57.50, Standard & Good 90 lb. to 130 lb. 45.00-53.50, Utility 40-70 lbs. 40.50-44.00.

**FARM CALVES:** Holstein bulls 90-130 lbs. 55.00-81.50, Holstein heifers 90-130 lbs. 47.50-54.50.

**HOGS 173:** US No. 1-2 200-240 lbs. barrows and gilts 44.50-45.75, No. 1-3 200-240 lbs. 44.00-44.25, No. 2-3 260-280 lbs. 38.50-41.00. US No. 1-3 300-600 lbs. sows 37.50-41.50, No. 2-3 300-600 lbs. 32.50-36.00. Boars 28.50-29.75, Light weights 30.25-31.75.

**FEEDER PIGS 15:** US No. 1-3 20-40 lbs. feeder pigs 22.50-31.00 per head.

**SHEEP 37:** High Ch. & Pr. 90-110 lbs. 66.50-71.50, Choice 90-100 lbs. 64.50-66.00, Good 75-80 lbs. 60.50-62.50. Slaughter ewes 18.00-26.50. 2 GOATS 18.50-32.00 per head.

## Keister's Livestock

Middleburg, Pa.

Tuesday, August 27

Report supplied by PDA

**CATTLE 301:** Compared with last Tuesday's market, slaughter cows 50 cents-1.50 lower. Choice slaughter steers 1040-1540 lbs. 50.75-55.00, Good 47.75-53.00, Few Standard 39.75-42.00, Choice Holstein 45.00-48.75, Good 41.00-44.50. Few Standard slaughter heifers 38.00-42.00. Breaking Utility & Commercial slaughter cows 35.00-38.00, Couple 41.10, Cutter & Boning Utility 33.50-36.00, Canner & Low Cutter 28.50-33.00, Shells down to 22.00. Few Choice slaughter bullocks 53.00-57.75, Individual 63.75, Few Good 46.25-52.00. Yield Grade No. 1 975-1800 lbs. slaughter bulls, 44.50-52.00.

**CALVES 168:** Individual Prime Vealers 89.00, Few Choice 58.00-64.00, Few Good 50.00-55.00, Standard & Good 70-100 lbs. 40.00-47.00, Few Utility 60-80 lbs. 35.00-38.00.

**FARM CALVES:** Holstein bulls 90-130 lbs. 60.00-80.00.

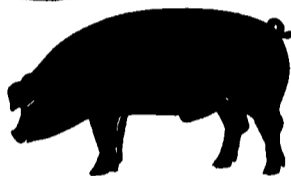
**HOGS 368:** Barrows & gilts 50 cents-2.00 lower. US No. 1 215-235 lbs. barrows & gilts 45.75-47.50, No. 1-2 210-235 lbs. 44.25-45.75, No. 2-3 190-250 lbs. 43.00-44.25, No. 2-4 200-270 lbs. 40.00-43.00. Sows - US No. 1-3 300-650 lbs. sows 34.25-36.00, No. 2-3 300-550 lbs. 30.00-34.25. Boars 30.25-30.75.

**FEEDER PIGS 220:** US No. 1-3 20-35 lbs. feeder pigs 25.00-32.00 per head, No. 1-3 35-50 lbs. 31.00-37.00 per head.

**SHEEP 4:** Choice a few 110-140 lbs. Spring Slaughter Lambs 64.00-72.00.



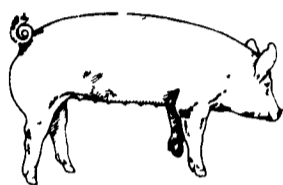
**GWALTNEY of SMITHFIELD, LTD.**



We will be receiving hogs at Vintage Sales Stables in Paradise, Pa. Mondays, Wednesdays, Thursdays & Fridays from 7 a.m. to 12 noon  
**717-442-4742**

## ATTENTION YORK COUNTY HOG PRODUCERS

We will be receiving hogs at Thomasville, Pa. Tuesdays 7 a.m. to 12 noon Futures forward contracts are available. No commission, paid promptly. York County - **717-792-9836**



**EMERY'S BUYING STATION**

## OPEN TO RECEIVE YOUR MARKET HOGS

**AT THE GREEN DRAGON MARKET RD 4, EPHRATA, PA 17522 1 MILE NORTH OF EPHRATA ON NORTH STATE STREET.**

**HOURS: MONDAY, TUESDAY, and WEDNESDAY 6:00 A.M. to 11:30 A.M. 215-458-5677 Residence 717-733-9648 Office**

**YOU ARE PAID FOR YOUR HOGS IMMEDIATELY**

Ken & Lois Emery, Proprietors

## MELHORN SALES, SERVICE, TRUCKING CO.

1010 W. Main St., Mount Joy, PA 17552

The only full service company, in this area, to handle the total needs of the poultrymen.

Which Includes:

- DEKALB chicks & started pullets sold by Clay Mumma, Nelson Groff & Harold Mishler.
- Complete loading & unloading of pullets & spent hens.
- New modern dollie equipment to move your pullets fast and efficiently with minimum stress to the pullets

Place Your Confidence In A Full Service Company That Wants To Be Worthy Of Your Business

For More Information Phone:  
**717-653-1102 or 717-653-2787**

Monday - Friday 8 A.M. - 4 P.M. ask for Lynn or Wendy



## DARYL'S WELDING SHOP

"On Wheels"

- I REPAIR:**
- S.S. Milk Tanks
  - S.S. Food Processing Eq.
  - Any S.S. Items
  - Custom Welding Of Other Metals Also

505 E. Woods Dr. Lititz, PA 17543  
**(717) 627-2747**

## HAY & STRAW SALE

12:00 Noon Every Wednesday Westend of Avondale at the intersection of Baltimore Pike and Route 41.

Harvey Z. Martin  
215-268-3604 (Office)  
215-445-5303 (Residence)

## KING'S AUCTION, KIRKWOOD

Hay, Straw and Grain Auction

**EVERY TUESDAY**

12:00 Located Rt. 472 5 miles south of Quarryville or 6 miles north of Oxford at Shaub's Auction House

Lloyd H. Kreider  
Auctioneer  
AU-000533L

No out of state checks  
**ALL TRUCKERS AND FARMERS WELCOME**