



# Livestock market and auction news

## Virginia Auction Summary

August 8-14  
Report supplied by VDA  
Total of Va. Weekly Feeder Cattle Auction Receipts: 3,477. Steady to 3.00 higher.

South & Southwest Va.  
August 1-7  
Report supplied by VDA  
STEERS: Medium 1 300-500 lbs. 61.75-73.50, 500-700 lbs. 55.00-62.75, 700-1000 lbs. 52.50-58.00. Large 1 300-500 lbs. 62.50-72.50, 500-700 lbs. 58.00-64.50, 700-1000 lbs. 53.00-58.00. Small 1 300-500 lbs. 50.00-64.00, 500-700 lbs. 53.00-59.00.

HEIFERS: Medium 1 300-500 lbs. 49.00-50.00, 500-700 lbs. 44.00-53.50, 700-900 lbs. 46.00-51.75. Large 1 300-500 lbs. 49.00-59.50, 500-700 lbs. 48.80-54.00, 700-900 lbs. 44.00-50.75. Small 1 300-500 lbs. 44.00-52.00, 500-700 lbs. 48.00-52.75.

Northern Va. Auction Summary  
August 8-14  
Report supplied by VDA  
STEERS: Medium 1 300-500 lbs. 55.00-66.00, 500-700 lbs. 54.00-62.00, 700-1000 lbs. 47.75-58.25. Large 1 500-700 lbs. 57.50, 700-1000 lbs. 50.75. Small 1 300-500 lbs. 54.00-59.75, 500-

700 lbs. 53.50-58.50.  
HEIFERS: Medium 1 300-500 lbs. 47.00-56.00, 500-700 lbs. 46.50-54.50, 700-900 lbs. 43.00-53.25. Large 1 300-500 lbs. 51.00-54.00, 500-700 lbs. 49.50-50.50, 700-900 lbs. 47.75-50.50. Small 1 300-500 lbs. 43.75-54.00, 500-700 lbs. 45.00-52.00.

## Shenandoah Valley Livestock

Harrisonburg, Va.  
Saturday, Aug. 10

Report supplied by auction  
FEEDER CATTLE: Trend-Steady. Steers- M&L-1 300-500 lbs. Few 55.50-62.75, 500-700 lbs. 54.00-59.00, 700-1000 lbs. 51.00-56.00, Holstein 300-1000 38.50-43.00. S-L&M&L-2 300-500 lbs. 1 lot 58.50, 500-700 lbs. 55.25-56.50. Feeder Bulls: M&L-1 300-500 lbs. 53.00-1 Lot; 500-700 lbs. 49.50, 700-1000 lbs. 43.00-46.75. S-L&M&L-2 300-500 lbs. 1 lot 54.50, 500-700 lbs. 41.50-47.50. Heifers: M&L-1 300-500 lbs. 52.00-55.50, 500-700 lbs. 47.44-51.50. S-L&M&L-2 300-500 lbs. 49.00-50.00, 500-700 lbs. 47.00-49.00.

STOCK COWS: Baby Calves 31.00-69.00.

SLAUGHTER CATTLE: Steers-

Good 2-3 45.00-49.10.  
SLAUGHTER COWS: Trend-2.00 higher.  
Utility & Commercial 2-4 34.75-38.50; Canner & Cutters 1-3 31.00-33.75.

SLAUGHTER BULLS: 1 & 2 42.25-48.00.  
LAMBS: Trend- 2.00 lower. Blue-0. High Choice & Prime 67.70; Red O. Choice 64.00; Feeder Lambs Choice 65.00-68.00; Slaughter Ewes 10.75-18.00, Head Ewes 33.00-52.50.

HOGS: US 1-3 200-240 lbs. 45.10, Sows 1-3 Few 37.00-97.00, Boars 25.00-27.25.

VEAL: Good 58.00-64.00.  
SLAUGHTER CALVES: Good & Choice 54.00-58.00.

## Four States Livestock

Hagerstown, Md.  
Wednesday, Aug. 7

Report supplied by Auction  
SLAUGHTER: Fed Steers- Few Offered No Choice. Good 44.00-47.00; Medium 43.00 down. Heifers- Few Offered. Medium 37.00-40.00. Cows- Good Run \$2.00 Higher. High Yield 38.00-41.25; Average 34.00-37.00; Big Middle 28.00-33.00; Fatty

Herf. 32.00-36.00; Shelly 33.00 Down. Fat Bulls- \$1.00 Higher. Good 46.00-48.00; Medium 42.00-45.00. Veal Calves \$1.00 To \$3.00 Higher. Choice 65.00-70.00; Good 60.00-64.00; Medium 54.00-59.00; Farm Hfrs. 60.00-73.00; Farm Bulls 60.00-76.00; Light Calves 45.00-52.00; Weak Calves 44.00 Down. Lambs- \$2.00 Lower. Choice & Good 57.00-61.00; Med. 51.00-56.00.

STOCKER: Steers- 300-550 lbs. Mostly Steady. Good 51.00-54.50, Medium 45.00-50.00, Culls 44.00 down. Steers- 600-850 lbs. Choice 50.00-53.00, Good 45.00-49.00, Medium 44.00 down. Heifers- (All Weights) Choice 49.00-50.50, Good 43.00-48.00, Medium 38.00-42.00. Bulls- Choice 53.00-57.00, Good 47.00-52.00, Medium 40.00-46.00. Springing Heifers To \$675.00. Pigs, Hd. Large Run- \$2.00 Lower. 20-35 lbs. 15.00-29.00; 40-80 lbs. 30.00-43.00. Shoats By Lb. 40.00-56.00. Slaughter Hogs \$2.00 Higher 220-260 lbs. 44.85-46.35 Sows- 350-635 lbs. 36.50-38.75.

A Total Of 407 Hogs Were Sold At The Hatfield Buying Station Tuesday Morning. The Top Price Was \$46.00. Help Wanted-Every Wednesday Dependable Livestock Drivers To Work Daytime Or Evening Hours. Must Have Knowledge Of Livestock. Call Hagerstown 733-8120 Between 8:30 A.M. To 4:30 P.M.

## New Wilmington Livestock

New Wilmington, Pa.  
Monday, August 12

Report supplied by PDA  
CATTLE 131: Compared with last Monday's market, slaughter cows \$3 higher. Few Choice 50.00-52.00, Few Good 47.50-49.75, Few Standard 44.00-45.75. Choice slaughter heifers (one) 50.00, Few Good 43.00-47.00, Standard 38.50-42.50. Breaking Utility and Commercial slaughter cows 37.00-41.25, Cutter & Boning Utility 36.00-40.00, Canner & Low Cutter 30.00-36.00, Shells down to 28.00. Few Yield Grade No. 1 1200-2020 lbs. slaughter bulls, 45.50-49.00, One

Yield Grade No. 2 1175 lbs. 40.00.  
FEEDER CATTLE: Heifers few Medium Frame #1 430-665 lbs. 40.00-45.75, Few Large Frame #2 365-625 lbs. Holsteins 37.00-43.50.

CALVES 232: Vealers \$5.00-10.00 higher. Couple Choice 78.00 & 85.00, Good 60.00-72.00, Standard & Good 90-125 lbs. 47.50-56.00, 60-85 lbs. 40.00-52.00, Utility 50-90 lbs. 25.00-37.50.

FARM CALVES: Holstein bulls 85-130 lbs. 55.00-72.50.

HOGS 271: Barrows & gilts \$1.00-1.50 higher. US No. 1-2 215-240 lbs. barrows & gilts 46.00-47.00, 2 Lots 70 head at 48.00, No. 2-3 210-260 lbs. 44.50-46.00, No. 2-4 220-250 lbs. 43.60-44.50. SOWS: US No. 1-3 320-475 lbs. sows 36.50-38.00, Few No. 2-3 335-450 lbs. 32.00-34.75. Few Boars 32.00-32.25.

FEEDER PIGS 83: Lot US No. 1-3 25 lbs. feeder pigs 22.00 per head, No. 1-3 35-50 lbs. 24.00-38.00.

SHEEP 187: Choice & Prime Spring slaughter lambs 75-120 lbs. 62.00-69.00, 15 head 65-75 lbs. 70.00-73.00, Good 60-90 lbs. 50.00-58.00. Slaughter ewes 16.50-23.00.

## Jersey Shore, Pa.

Thursday, Aug. 15

Report Supplied by Auction  
Return to Farm Calf 55.00-72.00.  
Good Veal 45.00-65.00.  
Common Veal 39.00-44.00.  
Choice Steers 51.00-55.75.  
Good Steers 48.00-52.00.  
Common Steers 44.00-47.00.  
Commercial Cows 36.00-40.00.  
Canners-Cutters 34.00-37.00.  
Shells 29.00-33.00.  
Choice Heifers 43.00-48.00.  
Good Heifers 41.00-45.00.  
Common Heifers 37.00-40.00.  
Common Feeders 35.00-53.00.  
Bulls 42.00-47.00.  
Good Hogs 44.00-47.00.  
Heavies 37.00-40.00.  
Sows 32.00-34.00.  
Lambs 55.00-67.00.  
Eggs 48.00-73.00.

## LOUIS LYONS & SON

Consign your cattle and hogs, feeder pigs & calves to Louis Lyons & Son. They offer choice service, excellent sorting & marketing of your livestock.

Charles Diller, Manager  
Phone 394-7915

Burnell Siegrist - Buyer & Seller  
Phone 626-8653

Experienced Personnel

Immediate Weighing

## KING'S AUCTION, KIRKWOOD

Hay, Straw and Grain Auction  
EVERY TUESDAY  
12:00

Located Rt 472 5 miles south of Quarryville or 6 miles north of Oxford at Shaub's Auction House

Lloyd H. Kreider  
Auctioneer  
AU-000513L

No out of state checks

ALL TRUCKERS AND FARMERS WELCOME



## SADDLE UP!

To Better Equipment... Find It In Lancaster Farming's CLASSIFIEDS!

## ATTENTION FARMERS

The New Way To Market Your Livestock

EVERY MONDAY HATFIELD PACKING CO. WILL RECEIVE YOUR HOGS

EVERY THURSDAY MOYER PACKING CO. WILL RECEIVE YOUR CATTLE

AT THE

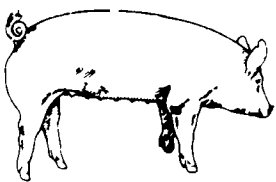
## BLAIR-BEDFORD BUYING STATION

RD #1, Martinsburg, PA

- Every Monday we will receive your hogs from 7 30 a m to 11 a m Also calves from 7 30 a m to 3 p m Your animals will be weighed & paid for immediately
- We will also accept your sows and boars
- Your Butcher Cattle & Calves will be received from 8 a m to 12 noon every Thursday We will either pay you for your cattle immediately or you may sell them dressed weight
- There will not be a commission or yardage fee deducted from your check
- You may call our office Monday mornings and we will be able to tell you the base price for hogs for the day

DALE R. HOOVER - Owner  
Blair-Bedford Buying Station

Business Residence  
Phone 814-793-3077 Phone 814-793-2657



## EMERY'S BUYING STATION

## OPEN TO RECEIVE YOUR MARKET HOGS

AT THE GREEN DRAGON MARKET  
RD 4, EPHRATA, PA 17522  
1 MILE NORTH OF EPHRATA  
ON NORTH STATE STREET.

HOURS: MONDAY, TUESDAY, and WEDNESDAY 6:00 A.M. to 11:30 A.M.  
215-458-5677 Residence  
717-733-9648 Office

YOU ARE PAID FOR YOUR HOGS IMMEDIATELY

Ken & Lois Emery, Proprietors

## SWINE PRODUCTION SALES AND SERVICE

Complete Feeding Programs and Services

Feeding Programs to Meet Your Individual Needs

Computerized Record Keeping System

Providing Veterinarian Service



419 W. High Street  
Elizabethtown, PA  
17022

Supplying Farm Fresh Feeder Pigs

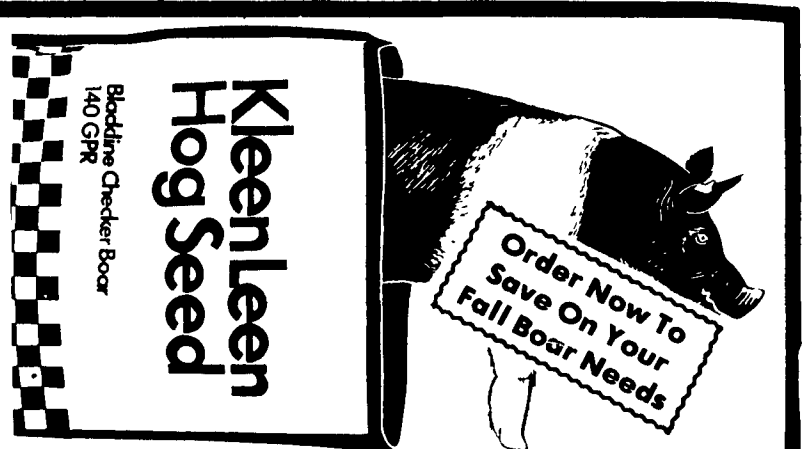
Marketing and Hedging Services

Marketing of Genesis Breeding Stock

Developing Individual Financial Programs

PA. Toll Free  
1-800-468-5524

Direct Dial  
(717) 367-1525



Those aggressive Checker™ Boars and healthy Checker™ Gilts are as close at hand as we are. No one offers more to your entire hog operation: Kleen Leen's guaranteed breeders. An unmatched health program. Plus the most progressive way to judge boars today... "Genetic Potential Rating."

Stop by soon. Remember, we've got more in store for you than just our great feeds.

For more information or to order animals, stop by or call your local Kleen Leen representative listed below.

1-800-553-8137

### KEYSTONE MILLS

John B Kurtz  
PHONE 717 354 4616 717 738 1088  
RD3 EPHRATA PA 17522

### WEST WILLOW FARMERS ASSN., INC.

PHONE 717 464 3386  
WEST WILLOW PA 17538

### PHILLIPS FEED SERVICE INC.

PHONE 215 286 9029  
286-0133  
MORGANTOWN PA 19543



No One Offers More

### HESS MILLS

PHONE 717 442 4183  
717 768 3301  
PARADISE PA 17562

### K & K FEED, INC.

PHONE 717 866 2324  
23 N PARK ST RICHLAND PA 17087

### WOODSTOWN ICE & COAL CO.

PHONE 609 769 0069  
WOODSTOWN NJ 08098