

Livestock market and auction news

Peoria Cattle

Thursday, Aug. 5

Report Supplied by USDA

Trading moderate with best demand for steers suitable for commodity delivery. Slaughter steers and heifers closed 1.50 to 3.00 higher, bulk of sales 2.00 to 2.50 higher than a week ago. Cows 1.00 to 1.50 higher. Bulls 1.00 to 3.00 higher. Supply mainly good to average choice slaughter steers and heifers with 4% cows. Receipts this week about 2400 as compared to 1602 a week ago and 1742 a year ago.

SLAUGHTER STEERS: Choice 2-4 1050-1200 lbs. 52.50-53.50, mostly 52.50-53.00, load Monday 54.00; 975-1050 lbs. 51.00-53.00. Mixed good and choice 2-3 1000-1200 lbs. 50.00-52.50. Good 2-3 900-1050 lbs. 48.00-51.50.

SLAUGHTER HEIFERS: Choice 2-4 950-1100 lbs. 51.00-52.00, couple loads 52.25-52.75, part load 53.00; 900-950 lbs. 49.50-51.00. Mixed good and choice 2-3 900-1100 lbs. 49.50-51.50. Good 2-3 800-950 lbs. 47.00-50.00.

COWS: Breaking utility and

commercial 2-3 35.00-38.00. Cutter and boning utility 1-2 32.00-36.00.
BULLS: YG 1-2 1100-1850 lbs. 44.00-48.50, couple high yielding 51.00.

Valley Livestock

Athens, Pa.

Monday, August 12

Report supplied by auction
Holstein Hfr. Calves 48.00-55.00.
Veal Calves 50.00-62.50.
Vealer Bull Calves 65.00-76.00.
Slaughter Calves 45.00-50.00.
Grassers & Feeders 34.00-55.00.
Lambs 50.00-87.00.
Sheep 15.00-23.00.
Hogs, 200 to 250 42.00-45.50.
Sows 32.00-37.50.
Boars 30.00-37.50.
Pigs each 15.00-35.00.
Heifers 38.00-40.50.
Steers no top steers.
Steers, feeder 36.00-55.00.
Bulls 39.00-45.00.
Cows, utility 37.00-39.00.
Cows, fat 37.00-39.00.
Cows, medium 34.00-36.00.

Cows, poor or small 30.00-33.00.

Cattle Market higher.

Calf Market steady.

Horses to 150.00-270.00.

Ponies to 50.00-100.00.

Goats each to 10.00-40.00.

Remarks We Have 10 beef packers buying each week. Send your livestock every Monday.

Joliet Cattle

Thursday, Aug. 15

Report Supplied by USDA

CATTLE: Friday through Wednesday's salable receipts 1700; 5 days last week 1427; same period a year ago 1879. Trading moderate for the week. Slaughter steers ended the week steady to 50 lower compared with Wednesday. Slaughter heifers ended the week steady to 1.00 higher.

SLAUGHTER STEERS: Choice 2-4 1100-1350# 52.00-53.50 Monday; 51.00-53.00, load 53.50 Wednesday. Choice 3-4 1250-1350# 52.00-52.50 Monday; load 1500#51.00 Monday; few packages choice 3-4 1300-1450#

49.00-51.00 Monday. Choice 3-5 1300-1500# 45.00-48.00 Monday; load choice holsteins 2-3 1650# 45.00 Monday. Couple loads mixed good and choice 2-3 1050-1250# 51.75-52.00 Wednesday.

SLAUGHTER HEIFERS: Choice 2-4 950-1100# 51.00-53.50 Monday; 51.00-52.50 Wednesday. Mixed good and choice 2-3 900-1050# 48.00-51.00.

Belleville Livestock

Belleville, Pa.

Wednesday, August 7

Report Supplied by PDA

CATTLE 140. Breaking Utility and Commercial slaughter cows 37.60-39.75, Cutter and Boning Utility 35.50-37.50. Canner and Low Cutter 31.50-34.50, Shells down to 28.50. Yield Grade No. 1 1000-1990 lbs. slaughter bulls 43.00-49.60.

CALVES 187. Standard and Good 80-100 lbs. vealers 44.00-47.50, Utility 39.00-44.00. **FARM CALVES:** Holstein Bulls 95-120 lbs. 66.00-87, mostly 72.00-80.00.

HOGS 123. US No. 1-2 barrows and gilts 44.00-45.35. US No. 1-2 sows 34.00-35.50, few No. 2-3 26.00-30.00.

FEEDER PIGS 208. US No. 1-3 15-25 lbs. feeder pigs 18.00-29 per head, No. 1-3 25-45 lbs. 34.50-35.50 per head.

SHEEP 15. Choice 65-95 lbs. spring slaughter lambs 57.00-69. Slaughter ewes 8.00-26.00. **GOATS** - 10.00-27 per head. **HOLSTEIN DAIRY COWS** \$350-\$1100.00 PER HEAD.

holsteins 42.25-45.50, few 46.75, Standard 40.25-42.25, Few Utility slaughter heifers 35.00-37.00. Breaking Utility & Commercial slaughter cows 37.00-40, few 40.35, Cutter & Boning Utility 33.75-38.50, Canner & Low Cutter 28.00-34, few Shells down to 25. Good slaughter bullocks 48.10-50.25, individual's 51.25 & 52.25, few Utility 40-42.25. Yield Grade No. 1 1265-1920 lbs. slaughter bulls 45-48.75, few 050.00.

FEEDER CATTLE: Few Medium Frame #2 365-515 lbs. steers 53.00-64, few Large #2 360-600 lbs. 44.50-50. Few Medium Frame #1 545-930 lbs. bulls 39-42.50, few Large #2 585-710 lbs. 36.00-43.00.

CALVES 175. Few Choice vealers 79.00-92, few Good 52.00-71, few Standard 37.00-45.00, Standard & Good 90-115 lbs. 43.00-48, 65-85 lbs. 38.00-43, Utility 55-85 lbs. 30.00-35, few down to 21.00. **FARM CALVES:** Holstein Bulls 90-130 lbs. 50.00-83, mostly 65.00-79, few Beef cross bulls and heifers 90-110 lbs. 45.00-55.00.

HOGS 359. Barrows and gilts \$7-\$8 higher. US No. 1-2 210-245 lbs. barrows and gilts 49-49.50, No. 2-3 210-260 lbs. 48.35-49.25, No. 2-4 210-260 lbs. 47.75-48.50, few 48.85, lot 290 lbs. at 44.50, No. 1-3 160-185 lbs. 37.85-40.50. Sows 50 cents-\$1 higher. US No. 1-3 300-590 lbs. sows 33.00-36, one 38.00, No. 2-3 350-495 lbs. 32.00-34, few Medium 275-405 lbs. 31.50-33.25. Boars 31-32.50, one 34.75, light weights 32-37.50.

FEEDER PIGS 110. US No. 1-3 30-40 lbs. feeder pigs 76.00-85, 55-60 lbs. 63.00-70, lot 70 lbs. at 36.00 all per hundredweight basis.

SHEEP 46. High Choice & Prime 60-85 lbs. spring slaughter lambs 64.00-74, Good & Choice 45-95 lbs. 51.00-58, 2 lots 64.00 & 70. Slaughter sheep 15.00-28, few yearlings 35.00-38.

GOATS 9: 20.00-36 per head.

TOP PRICES FOR DOWN, CRIPPLED AND AS IS COWS, BULLS & STEERS

Slaughtered Under Federal Inspection
Paid On Dressed Weight

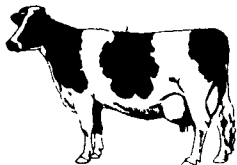
Tom Mulvaney
Livestock Trucking
(201) 454-4247

HANDLING:

Warren, Hunterdon, Sussex
And Somerset Counties, New Jersey

IN PENNA:

Northampton,
Bucks And
Lehigh Counties



WHOLE COTTON SEED AND PEANUT HULLS NAAMAN EBERLY
Paradise, PA
717-687-0990
717-299-3001

CHESAPEAKE BAY SPORT FISHING SOUTHERN MARYLAND
Trolling, Chumming and Drift Fishing
Call
Captain Joe
301-257-2927

Leesport Livestock Auction

Leesport, Pa.

Wednesday, August 7

Report supplied by PDA

CATTLE 241. Compared with last Wednesday's market, slaughter steers strong to \$1.50 spots \$3 higher; Cows mostly 75 cents-\$3 higher; Bulls strong to \$2 higher. Few High Choice & Prime 3-4 1145-1220 lb. slaughter steers 50.60-53.75, Choice 2-4 1070-1330 lbs. 51.25-53.35, few 53.85, few yield grade #4 down to 49.75, Good 48-51.25, few Standard 42.60-46.75, Good & Choice 1075-1690 lbs.

MELHORN SALES, SERVICE, TRUCKING CO.

1010 W. Main St., Mount Joy, PA 17552

The only full service company, in this area, to handle the total needs of the poultrymen.

Which Includes:

- DEKALB chicks & started pullets sold by Clay Mumma and Nelson Groff
- Complete loading & unloading of pullets & spent hens.
- New modern dollie equipment to move your pullets fast and efficiently with minimum stress to the pullets

Place Your Confidence In A Full Service Company That Wants To Be Worthy Of Your Business

For More Information Phone:
717-653-1102 or 717-653-2787

Monday - Friday 8 A.M. - 4 P.M. ask for Lynn or Wendy



HAY & STRAW SALE

12:00 Noon
Every Wednesday
Westend of Avondale
at the intersection of
Baltimore Pike and
Route 41.

Harvey Z. Martin
215-268-3604
(Office)
215-445-5303
(Residence)

All-day comfort!

Popular plain toe uniform oxford Features comfort able cushion insole steel shank and non-marking oil resistant sole and heel Try on a pair for size

GREAT FITTING OXFORD



You've earned your Wings!

Red Wings

BOOKS SHOE SERVICE
107 E STATE ST
QUARRYVILLE, PA 17566
717-786 2795
CLOSED WEDNESDAYS