

Moldboard enthusiasts congregate in York C

BY JOYCE BUPP
Staff Correspondent

YORK NEW SALEM — Plowmen do not enter contests for the prize money.

Even the top award — \$100 and a trophy — hardly underwrites the expense of hauling a favorite tractor and plow, even from a neighboring county.

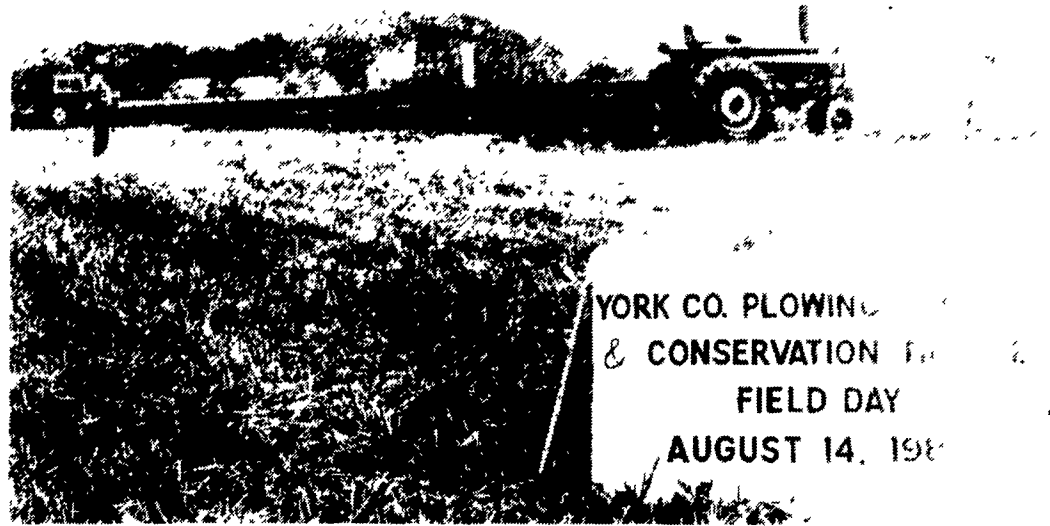
Still, a core of devoted moldboard enthusiasts trucked their favorite models miles across the state to compete Wednesday at the State Plowing Contest, held in conjunction with York County's own contest and Annual Conservation Tillage Field Day. The event took place at the Joe Stump dairy farm.

Carefully eyeballing each pass of the plowshares under a broiling 94°F. sun and almost choking humidity, entries from Lancaster and Dauphin Counties hauled home the first place honors.

Robert Miller, Millersburg R2, a frequent winner in Dauphin County and state small plow contests, added yet another honor to his growing list of awards. Following in the second and third places were Terry Sunday, York, and Gerald Alwine, Somerset.

Large plow honors went to Frank Burkholder, 1030 Silver Spring Road, Lancaster. A veteran plowman, Burkholder has been an entrant since 1968.

Following in second was Frank



For passers-by scratching their heads at the dozen or so tractors crawling through a single flat field, this sign gave at least a hint of the contest and events marking Wednesday's plowing contest hosted in York County.



Taking the York County plowing honors were from left, Terry Sunday, small plow; Jerry Yohe, contour; and Randall Keeney, large plow.

Kocevar, Dauphin County, and third was Jay Stoner, representing Cumberland County. York County's Randall Keeney wrapped up the fourth place spot with Rommert Stellingwerf fifth in a contest which saw a slim 27-point spread among the five finishers.

Contour division top spot also went to Dauphin County as Neil Leffler, Star Route Gratz, outplowed close second James Mowery of Somerset. Host farm employee Jerry Yohe represented York for the third-place position.

First place winners each received \$100 cash prizes and

trophies. Runnerup winners earned \$75 cash awards, while all other entrants took home \$50 toward their entry expenses.

Presentation of the state awards was the highlight of the county's annual tillage demonstration event, which opened at a just slightly cooler early morning hour to the county's own plowing competition.

Terry Sunday, York, bested runner-up John Miller of Airville in the small plow category. Charles Noonan and Greg Tawney, York, were third and fourth placers. Large plow county title went to

Randall Keeney over host Joe Stump in second and Jerry Yohe, third.

Winners returned to their rigs for the state showdown. Jerry Yohe represented York County in the contour division which is held only at the state level.

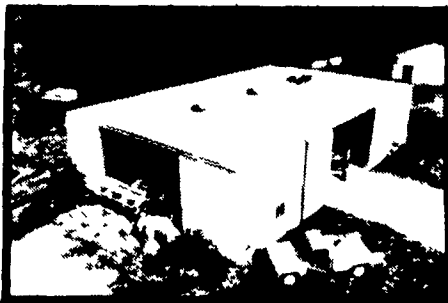
Tillage demonstrations, related presentations by Extension and Conservation Service personnel, and antique equipment displays kept the pace of the educational day moving.

Demonstrations ranged from draft horse one bottom plowing by Seven Valleys farmer Peter Bryn

BUILDINGS BY

BUTLER

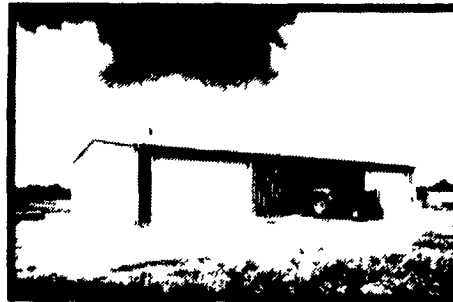
SEE US AT AGPR



FARMSTED II



SHOP - STORAGE - GARAGE



AG-MASTER 2:12

All Butler Standard Buildings

AG PROGRESS

Aug. 20, 21, 22

3 DAY SPECIAL

35% OFF

F.O.B. Annaville, PA List Price

See Us At The Show

NO NO BUT WE WANT BUSN Building And ins BIG DIC ad WAREHOUS

BUTLER MFG. CO.

Attn P. E. Hess

Box 337, Oxford, PA 19363



ASK ABOUT OUR NEW DEALER PROGRAM MAIL IN COUPON TODAY

Name _____

Address _____

County _____ Zip _____

City _____ State _____

Phone _____

(Include area code)

Full Line Of Insulation, Roll or Board
See Your Butler Agri-Builder For All Your Insulation Needs

See Your Agri-Builder Before You Buy

GRANT'S CONSTRUCTION CO., INC.
R.D. #1
Buffalo Mills, PA 15534
PH: 814-842-6540

C & M SALES INC
R.D. #1
Honesdale, PA 18431
PH 717 253 1612

GOMPF CONSTRUCTION CO., INC.
1841 Jerry's Road
Street, MD 21154
PH 301-692 5350

MYERS BUILDING SYSTEMS, INC
R.D. #1, Box 161
Clear Spring MD 21722
PH 301 582-4200

NAZARETH BUILDING SYSTEMS, INC
P.O. Box 47
Nazareth, PA 18064
PH 215-837 7700

TRI-COUNTY AGRI-SYSTEMS
R.D. #1, Box 55
Swedesboro, NJ 08085
PH 609-467-3174

MATTSON ENTERPRISE
1605 Mt. Holly Rd
Burlington, NJ 08016
PH 609-386-8888

* Prices May Vary From Build