

# Livestock market and auction news

## Central U.S. Carlot

### Beef Report

Wednesday, August 7  
Report supplied by USDA

Compared to Tuesday's 4:00 report: Choice 3 Steers steady to \$1.00 higher. Choice 3 Heifers steady to firm. Good 2-3 Steers steady in light test, Good 2-3 Heifers steady to \$1.00 higher. Choice 3 Steer and Heifer Carcasses fully \$1.00 higher. Trade slow to moderate for moderate demand and offerings.

The Gross Boxed Beef Carcass cut out value advanced \$.48 to an est. \$91.31 per cwt., 132 loads boxed cuts reported.

Sales reported on 25 loads of Steer and Heifer carcasses.

### Steer Beef

#### 12 Loads

#### FOB Omaha Basis

Choice 3 600-900 lbs. 80.00, steady-1.00 higher; 600-700 lbs. 81.00-81.50.

Choice 2 600-700 lbs. 82.00-82.50.

Choice 4 600-900 lbs. 67.00, 1.00 higher.

Good 2-3 600-900 lbs. 74.00, steady.

Good 2 & Low 3 600-700 lbs. 76.00-78.00.

### Heifer Beef

#### 13 Loads

#### FOB Omaha Basis

Choice 3 550-700 lbs. 80.00, steady-firm.

Choice 2 600-700 lbs. 81.00.

Choice 4 500-700 lbs. 67.00, 1.00 higher.

Good 2-3 550-700 lbs. 74.00-75.00, steady-1.00 higher.

Good 2 & Low 3 600-700 lbs. 79.00.

### Steer and Heifer

#### Primal Cuts

#### 8 Loads

#### FOB Omaha Basis

Choice 3: Hinds (H) 120-170 lbs. 101.00, steady; Forers 130-210 lbs. 61.50-62.00, steady-.50 lower; Arm Chucks 75-120 lbs. 59.00, steady-1.00 higher.

### Cow Beef

#### 7 Loads

Midwest: Trade remains slow for light offerings and good demand. Cow Carcasses firm on light test and comparison.

### Sales In The Midwest

#### Production Area

#### FOB Omaha Basis

Brkg Util 2-3 450&up lbs. 63.00-66.00, firm; Bng Util 1-3 400&up lbs. 66.00, firm; Cutter 1-2 350&up lbs. 74.00-76.00, firm.

### Boneless Processing Beef/

#### Beef Trimmings

#### 84 Loads

#### FOB Omaha Basis

90% Chem Lean Fresh \*\*\* 100.00-103.00 \*\*\*.

80% Chem Lean Fresh 78.00.

50% Chem Lean Fresh 36.00-39.00, late 37.50-39.00, 1.00-2.00 higher.

### Eastern Texas

#### and Oklahoma

#### Production Areas

#### FOB Plant

90% Chem Lean Fresh 101.00-103.00, 2.00-4.00 higher.

90% Chem Lean Frozen 102.00.

85% Chem Lean Fresh 95.00-97.50.

75% Chem Lean Fresh 76.00.

65% Chem Lean Frozen 60.00.

## Eighty-Four Livestock

### Eighty-Four, Pa.

#### Monday, August 5

#### Report supplied by PDA

CATTLE 201. Compared with last Monday's market, slaughter steers fully steady. Few Choice Slaughter Steers 5.00-52.00, few Good 47.50-49.50, Standard 43.00-47.00, Utility 39.00-43.00. Few Choice slaughter heifers 48.50-50.00, Good 45.50-48.00, Standard 40.50-45.00, Utility 37.00-40.00. Breaking Utility & Commercial slaughter cows 36.00-38.50, few High Yielding 41.00-42.75, Cutter & Boning Utility 34.00-37.00, Canner & Low Cutter 27.00-34.25, Shells down to 20. Yield Grade No. 1 1000-1750 lbs. slaughter bulls 45.00-51.75, #2 950-1450 lbs. 40.00-44.050.

FEEDER CATTLE: Medium & Large Frame #1 400-600 lbs. steers 48.00-58.00. Few Medium Frame #1 350-500 lbs. bulls 54.00-60.00.

CALVES 259. Vealers grading Good & Choice 3.00-5.00 higher, Standard & Good mostly steady. Few Choice Vealers 73.00-81.00, Good 61.00-71.00, Standard & Good 90-120 lbs., 43.00-48.50, 60-85 lbs. 39.00-44.00, Few Utility 50-85 lbs. 27.00-35.00.

FARM CALVES: Holstein bulls 90-125 lbs. 60.00-93.00.

HOGS 123: Barrows & gilts \$4.00 higher. US No. 1-2 225-250 lbs.

barrows & gilts 45.00-46.25, No. 2-3 210-240 lbs. 44.50-45.10, No. 2-4 230-260 lbs. 44.00-44.60, No. 1-3 160-175 lbs. 41.00-43.00. SOWS - US No. 1-3 300-600 lbs. sows 38.00-40.50, No. 2-3 400-550 lbs. 35.00-38.00. BOARS - 30.00-32.00.

FEEDER PIGS 16. US No. 1-3 20-25 lbs. feeder pigs 18.00-21.00 per head.

SHEEP 353. Spring slaughter lambs fully steady. High Choice & Prime 85-120 lbs. shorn lambs 72.00-75.00, 75-108 lbs. wool lambs 69.75-72.00, Choice 70-105 lbs. Wool Lambs 67.00-70.00, Good & Choice 55-75 lbs. feeder lambs 60.00-69.00. Slaughter sheep 18.00-28.25. GOATS 10: 8.00-28.00 per head.

## Belknap Livestock

### Dayton, Pa.

#### Wednesday, July 31

#### Report Supplied by PDA

CATTLE 69. Compared with last Wednesday's market, slaughter steers; one Choice 1425 lbs. at 45.00, one Good at 42.00. Few Standard slaughter heifers 38.75-39.50. Breaking Utility & Commercial slaughter cows 35.00-35.75, one at 37.00, Cutter & Boning Utility 33.00-36.25, Canner & Low Cutter 27.50-33.00, Shells down to 27.00. Few Yield Grade No. 1 1470-1810 lbs. slaughter bulls 45.00-49.50, one #2 1725 lbs. at 40.50.

FEEDER CATTLE: Few Medium Frame #1 410-660 lbs. steers 44.00-47.00, few #2 430-600 lbs. 35.00-42.00.

CALVES 101: Two Choice Vealers 69.00 & 70.00, few Good 56.00-59.00, few Standard 45.00-50.00, Standard & Good 90-110 lbs. 42.00-49.00, 60-85 lbs. 34.00-45.00.

FARM CALVES: Holstein Bulls 95-130 lbs. 65.00-80.00, 90-130 lbs. 53.00-60.00. Beef cross bulls and heifers 65-100 lbs. 43.00-53.00.

HOGS 204: Barrows and gilts 2.00 lower. US No. 1-2 225-240 lbs. barrows and gilts 42.00-42.10, lot at 42.75, No. 2-3 210-250 lbs. 40.00-41.60, No. 2-4 205-265 lbs. 38.00-40.00, No. 1-3 180-195 lbs. 38.00-40.75. Sows 2.00 lower. US Nos. 1-3 270-640 lbs. sows 31.00-35.00, few No. 2-3 380-615 lbs. 28.00-31.00. Boars 23.00-27.50.

FEEDER PIGS 55: US No. 1-3 25-35 lbs. feeder pigs 13.00-24.00 per head, 35-45 lbs. 24.00-33.00 per head.

SHEEP 8. Few Good and Choice 50-70 lbs. spring slaughter lambs 50.00-61.00. Few Slaughter Ewes 17.50-19.00. GOATS 13: 9.00-27.00 per head.

## Penns Valley Livestock

### Centre Hall, Pa.

#### Tuesday, August 6

#### Report supplied by Auction

Beef Cows: Utility and Commercial 36.25-39.50; Cutters 33.50-35.75; Canners 30.50-32.50; Shells 27.00.

Heifers: Standard 44.00-46.25; Commercial 37.50-42.00.

Steers: Good 45.25-48.25; Standard 43.25-45.10.

Bulls: Good 46.50-48.25; Standard 43.50-45.10.

Feeder Cattle: 300-500 lbs. large frame 49.00-52.00; 300-500 lbs. small frame 43.00-48.00; 500-700 lbs. large frame 46.00-51.00; 500-700 lbs. small frame 44.00-47.00.

Veal Calves: Choice 76.00-83.00; Good 63.00-72.00; Standard 50.00-62.00; Utility 43.00-49.00.

Farm Calves: Bulls 70.00-86.00; Heifers 52.00-63.00.

Hogs: 42.10-45.75.

Boars: 25.50-29.75.

Shoats: 25-30 lbs. per head 15.00-22.00; 30-35 lbs. per head 23.00-30.00; 35-50 lbs. per head 31.00-41.00.

Lambs: 55.00-65.00.

Sheep: 19.00-24.00.

Goats per head: 11.00-20.00.

## Leesport Livestock Auction

### Leesport, Pa.

#### Wednesday, July 31

#### Report supplied by PDA

CATTLE 207. Compared with last Wednesday's market, slaughter steers ready to \$1 lower; Cows 75 cents to \$2 lower. Choice 980-1400 lbs. slaughter steers 48.00-51.50, couple 53.00, few Good 45.00-47.50, few Standard 37.50-40; Good and Choice 1300-1600 lbs. holsteins 38.75-42.60. Few Choice slaughter heifers 48-50.25, few Good 38.75-40.00. Breaking Utility & Commercial slaughter cows 33.75-36.25, couple 37.85, Cutter & Boning Utility 33-35.50, Canner & Low Cutter 29.25-33, Shells down to 25.

Few Choice slaughter bullocks 49.50-56.50, few Good 43.75-47.25. Yield Grade No. 1 1000-1995 lbs. slaughter bulls 42.50-48, couple down to 38.50. FEEDER CATTLE: Few Medium Frame #1 500-900 lbs. steers 50.50-58, lot Large #2 350 lbs. at 47.00.

CALVES 190. Few Good and Choice vealers 55.00-56, Standard and Good 110-130 lbs. 47.00-50, 75-105 lbs. 40.00-46, Utility 60.80 lbs. 20.00-35. FARM CALVES: Holstein Bulls 90-130 lbs. 48.00-71.00. Few Beef Cross Bulls & Heifers 90-110 lbs. 45.00-61.

HOGS 400. Barrows and gilts \$3.75 to \$4.50 lower. US No. 1-2 2-235 lbs. barrows and gilts 41.00-42, lot 44.50, No. 2-3 210-245 lbs. 40-41.25, No. 2-4 220-265 lbs. 37.75-40. US No. 1-3 330-590 lbs. sows 32.50-35, couple to 37.50. Boars 29.00-32.00.

FEEDER PIGS 292. US No. 1-3 20-50 lbs. feeder pigs 91.00-97, 60-70 lbs. 64.00-80, lot 165 lbs. at 39.00 - all per hundredweight basis.

SHEEP 53. Choice 65-110 lbs. spring slaughter lambs 59.00-68, Good 60-75 lbs. 58.00-63. GOATS 14: Few Large Adults 14.00-34 per head, few Kids 18.00-25 per head.

## Valley Livestock

### Athens, Pa.

#### Monday, August 5

#### Report supplied by auction

Holstein Hfr. Calves 45.00-59.00.

Veal Calves 60.00-79.00.

Vealer Bull Calves 60.00-65.00.

Slaughter Calves 45.00-50.00.

Grassers & Feeders 32.00-45.00.

Lambs 50.00-62.00.

Sheep 15.00-25.00.

Hogs, 200 to 250 38.00-43.00.

Sows 30.00-34.00.

Boars 26.00-31.00.

Pigs each 12.00-27.00.

Heifers 36.00-37.75.

Steers none.

Steers, feeder 32.00-42.00.

Bulls 36.00-42.75.

Cows, utility 35.75-36.00.

Cows, fat 34.00-35.00.

Cows, medium 32.00-34.00.

Cows, poor or small 25.00-31.00.

Cattle Market easier.

Calf Market easier.

Horses to 250.00 each.

Ponies to 75.00 each.

Goats each to 35.00 each.



# "WANTED" LEGHORN FOWL



## NEW SANITIZED CAGE CART SYSTEMS OR COOPS

Call Richard Sechler,  
Tom Feger, Nelson Legge  
for quotations

PA Watts # 800-342-2249  
or call collect 215-488-7617

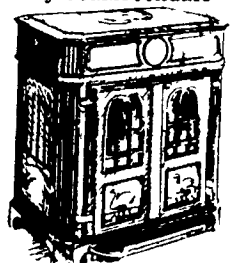
**SECHLER'S POULTRY, INC.**  
Box G, Strausstown, PA 19559

## HAY & STRAW SALE

12:00 Noon  
Every Wednesday  
Westend of Avondale  
at the intersection of  
Baltimore Pike and  
Route 41.

Harvey Z. Martin  
215-268-3604  
(Office)  
215-445-5303  
(Residence)

## SEVERN by Coalbrookdale



Presenting  
The World's Finest  
Coal/Wood Stove

## DUSSINGER'S QUALITY STOVES

2533 Old Phila Pike, Rt. 340,  
Smoketown, Pa  
3 Miles East of Lancaster  
T & F 10-8, W & S 10 till 5,  
Mon Appt  
(717) 397-7539