

Public Auction Register

THURS. AUG 22 - 11AM
Grain & Hog Eq
Dispersal Located from I-
80 Exit 5, Emlenton, PA, 9
mis S. on Rt. 38 or 18
mis N. of Butler on Rt. 38,
then 1/2 mi W of Annisville
Rd L C Borell, Owner
Lloyd G. Braham & Son,
Aucts.

THURS. AUG. 22 -
9:30AM Consignment Sale
of Tractors, Combines,
Farm Eq, Trucks
Location: Everetts
Corner. 3 mis. W. of
Kenton, DE, on the corner
of Rt. 300 & Rt. 44 on the
DE & MD line. C T. Scuse
& Sons, Inc., Marvel
Everett, Aucts

THURS. AUG. 22 - 8PM
Harkenrider Registered
Holstein Complete
Dispersal 70 Head Reg
Holsteins Located 3 mis
S. of Greenwood, 1 mi N
of Rexville, 1 3/10 mis. E
of Rt. 248 on Loomis Rd.
Rexville, NY. Paul & Tom
Harkenrider, Owners.
William Kent, Inc., Aucts.

FRI AUG. 23 - 10AM
Large Farm Eq & Dairy
Cows Located between
Mt Carmel and Danville
along Rt. 54 For. Lloyd H

& Jane W Garman Paul
E. Martin & John D.
Stauffer, Aucts

FRI. AUG. 23 - 5:30PM
Gap Auction. Antiques &
Hshld Goods sold at every
auction. Located off Rt.
41, Lancaster Turkey Hill
Mint Mkt. cross RR
bridge. Ira Stoltzfus &

Son. Aucts

SAT. AUG. 24 - 11AM
Aaron H. & Stella B.
Martin. Along Rt 897,
between Shaefferstown &
Klinefeltersville, Leb Co.
PA 100 Head of Dairy
Cows & Heifers. Paul E
Martin & John D Stauffer,
Aucts

SAT AUG 24 - 9AM Farm
Eq & Tools, Antiques &
Collectibles, Hshld Along
Hooflander Rd. between
Klingerstown & Mandata;
from Rt 225 in Mandata
turn E between Hotel &

ie, go through the
Village of Urban, continue
E. to sale Approx. 18 mis
S of Sunbury; 45 mis. N
of Harrisburg Albert &
Anna Hollenbach, Owner
Mike & George Deibert,
Aucts.

SAT AUG. 24 - 8 30AM
Real Estate, Antiques &
Coll. Hshld, Guns, Farm
Mach Location Park
Street (Ridgewood Park),
Millersburg, PA Kathryn
& Berlyn Zepp, Owners
Dockey, Dockey & Dep-
pen, Aucts

H & H Auction

Every Thursday Night,
6:00 P.M.

Located on Strasburg Rd., Coatesville, 1/2
mi. East of Stottsville Hotel and 1 mile
West of Rt. 82.

Household Goods & Appliances
sold at every auction.

Consignments accepted.
Call 215-384-7647

Visit our used furniture and appliance
store, 50 pieces of appliances at all
times.

Auctioneer:
Richard Dunlap AU001605L

PUBLIC AUCTION

SAT., AUGUST 24, 1985

9:00 A.M.

REAL ESTATE & ANTIQUES
OF

Jacob Gingerich Estate

LOCATED: 3 miles Southeast of Star-
view, PA.-Mt. Wolf area, York County at
Codorus Furnace. From Mt. Wolf follow
Rt. 24 to Codorus Furnace Rd., at
Luthern Church in Starview bear left,
continue straight 3 mi., cross Codorus
Creek & turn right, 1st farm on left past
Codorus Furnace.

REAL ESTATE
12:00 NOON

Historical 14 room stone house w/2 fireplaces,
surrounded by 160 acres of cleared & wooded
area. Original part of the house was built in
approx. 1753 & used as original Inn Masters
House & Arsenal for Revolutionary War. Large
frame barn, cement block garage, chicken
house & other out buildings. Approx. 60 acres
cleared & 100 acres wooded, land borders
Codorus Creek on both sides & surrounds
Codorus Furnace. Located in Hellam Twp.,
York County, Approx. 1/2 mile road frontage.

FOR INSPECTION OF REAL ESTATE &
DETAILS

Ph. 717-764-6412 Daytime or 717-266-1671
Evenings

TERMS: 10% Down-Balance in 45 Days of Sale
Date.

ANTIQUES
9:00 A.M.

4 Dry Sinks, Oak bedroom suites, sideboards,
plank bottom chairs, mantle clocks, wood box,
large wooden kitchen cupboard, Pfaltzgraff 3
gal. flowered crock, Heps flowered jug -of
York, Queen Bengal Nickel-plate cookstove
w/name of B.O. Poff of Mt. Wolf, 5 leg table,
baskets, milk pails, wooden tub washer, asst.
kerosene lamps, treddle sewing machine,
Weaver pump organ, wooden rockers, blanket
chests, quilts, drop-leaf tables, spool bed, wash
stand, chest of drawers, Boston rockers, wash
bowl set, spool cradle, cane seated rockers &
chairs, clothes tree, treddle bed (rope), Zenith
battery radio, dough trays, Irish bust, Cherry
Boy figurines, picture frames, block-planes,
wash boilers, wooden tubs, butter bowls &
churns, Waterfall wardrobe, milkglass dresser
set, tinware, trunk & glassware packed for
years & many old items not mentioned.
Western saddle, flat bottom wooden boat, cider
press, milk cans, butcher equipment, iron &
copper kettles, sausage stuffers, meat grinder,
knives, crocks, galvanized buckets, meat
benches, perfection 3 burner stove, kettle
hangers, scalding trough, post cards, egg
grader, fainting couch, living room furniture,
stirrers, hooks, Kelvinator freezer, Columbian
cookstove, Kelvinator refrigerator, Maytag
washer, 40" Kelvinator stove.

GUNS

IMPERIAL 12 GUAGE SINGLE SHOT
PHILBERT 32 HEXAGON BARREL
MANTON (BELGIUM) 12 GUAGE HAMMER
MUZZLE LOADER
WINCHESTER MODEL 12-20 GUAGE
SAVAGE 22 W/SCOPE & CLIP-
BOLT ACTION
SAVAGE 300 MODEL 99E
12 GUAGE DOUBLE BARREL-
WALTON ARMS CO.-
HAMMERLESS

AUCTIONEER'S NOTE: This is only a partial
list, there are many items being found in
preparing for sale-3 Generations of hand-me-
downs, 100's of items not mentioned.

Estate of
Jacob Gingerich
Executor:

CATHERINE GINGERICH

Attorney:
Earl Doll

AUCTIONEER: Blaine N. Rentzel
Emigsville, PA.
717-764-6412
#761-L

PUBLIC AUCTION

THURS., AUGUST 15, 1985

at 5:30 P.M.

In the Village of HEBE; 2 miles West of
Klingerstown; 5 miles East of Pillow &
Route 225; 20 miles South of Sunbury.

FARM EQUIPMENT & TOOLS

Int. Farmall 240 Tractor with Fast Hitch, nice
condition; Int. 2-Bottom Plow; Int. 7'; Carry-
all; (all fast hitch) Flat Bed Farm Wagon;
David Bradley Manure Spreader, good con-
dition; Woods 2-Row Corn Picker; Black Hawk
2-Row Planter on Rubber; 6' Disk; 2 & 3 Section
Harrows; New Idea Rake; Horse Plow &
Cultivator; Int. 10-Hoe Grain Drill; Metal &
Wooden Fence Stakes; Electric Fencers; 250
Gal. Oil Tank; Small Jigsaw; Burks Water
Pump; Wooden Keg; Bolts; Nails; Beltng;
Chains; Tires; Wheels; Heatrola; Kitchen
Warmer; Oil Heater & Stove; Early Kitchen
Cabinet; Bicycles; Lawn Mowers; Burlap
Bags; Scrap Iron; approximately 2-Ton Hay
other items not listed.

Owners,

MR. & MRS. JOHN A. WILLIAMS

(717) 425-3313

DEIBERT Mike, Auctioneer AU1599-L

George, Realtor & Auctioneer
AU209-L

PUBLIC SALE

OF FARM MACHINERY AND
DAIRY EQUIPMENT

SATURDAY, AUGUST 17, 1985

SALE AT 11:00 A.M.

Located 18 miles south of Bedford,
Bedford Co. Pa. Take Route 326 South
from Bedford to Sweet Root State Park,
turn right, go 3/4 mile, turn right go over
the mountain to Beans Cove, or 10 miles
east of Cumberland, Md., turn North off
U.S. 40 at Rocky Gap, Md. State Park on
to Pleasant Valley Road. 8 miles to sale.
Watch for sale signs.

5 TRACTORS

M.F. J135 trator wide front 4 speed tran-
smission, good rubber, M.F. Super 90 diesel
wide front multi power, 38 in. tires; M.F. 265
diesel wide front multi power, M.F. 236 quick
hitch tractor loader for M.F. 265 tractor and
others; M.F. 210 diesel 2 cylinder tractor wide
front only 590 hrs.; J.D. 4020 diesel tractor,
power shift and steering; 1960 Chevy 2 1/2 ton
truck, 16' bed and 4' sides; I.H. 225 self
propelled hay swather; N.I. 290 PTO hay bind;
N.H. 56 side rake; N.H. 277 baler with PTO
thrower; N.H. 36' bale elevator; Marabell 10
ton forage wagon with roof; Dion 10 ton forage
wagon; Grove 8 ton wagon and flat; McCurdy 8
ton wagon and flat with bale racks; Grove 6 ton
wagon, flat and grain sides; Fox forage har-
vester minus heads; N.H. 27 Whirl feed en-
silage blower; J.D. model FB16-7 grain drill;
J.D. 7000 four row plateless corn planter with
dry and liquid fertlizer and insecticide at-
tachments; J.D. 494A corn planter with fer-
tilizer attachments; AVCO N.I. tandem
manure spreader with hydraulic end gate;
Century mounted fiber glass field sprayer;
M.F. 880 semi-mounted 5 bottom automatic
reset plow; M.M. Oliver 3 P.H. 4 bottom
cushion trip plow; Bush Hog 10' chisel plow;
J.D. 110 transport disc; Brillant 16' transport
harrow; M.F. 3 P.H. 4 row cultivators; 1 row 3
P.H. cultivator; Bush Hog 5' rotary mower,
Bear Cat P.T.O. hammer mill; single chain
ensilage conveyor with motor; Thermo King
refrigerator unit for truck trailer.

DAIRY EQUIPMENT

Majonnier 800 gal. stainless steel vacuum milk
tank with 5 H.P. compressor and automatic
washer; Universal 2" stainless steel pipe line
milkers for 10 stalls with receiver panel and 5
units and automatic washer; DeLaval model 78
rotary milker pump and motor; XR 16 Ceman
tank; air controlled tire changer; tractor tire
chains; log chains; steel cattle gates; sawed
posts; small farm tools; 2 Singer electric
sewing machines; glass front china closet;
buffet; walnut bureau; double rinse tubs.

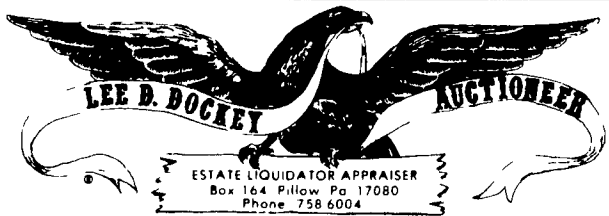
NOT MANY SMALL ITEMS,
SO BE PROMPT FOR MACHINERY.

DALE AND MIRIAN GRAHAM

Edgar J. Stull, Auctioneer
AU-000921-L

Martin and Martin Clerks

LUNCH STAND RESERVED



PUBLIC AUCTION

OF ANTIQUES & COLLECTIBLES

MONDAY, SEPTEMBER 2, 1985

10:00 A.M.

LOCATED AT SHOP & PLAY HALL,
ROUTE 209, LYKENS, PENNSYLVANIA

Will Be Selling The Antiques & Collectibles From The Estate Of
Alma C. Dyer, Elysburg, PA. & Sandra J. & David J. Dyer.

GLASS & CHINA

Selection of German China Dishes such as Plates, Bowls, Cups &
Saucers; Lustre Decorated Cups & Saucers; Assortment of Milk Glass;
Blown Flasks; Assortment of Opalescent Glass; Lg. Selection of Pattern
Glass such as Feather, Drape, Good Luck, Moon & Star; Chicken on Nest
Dishes; Marigold Carnival Dishes; Toilet Sets; R.S. Prussia Bowls;
Copper Lustre Creamers; China Chocolate Pot; Service for 12 Spode
Tower Copeland 79-Pc. Dinnerware Set; Etc.

LAMPS

(5) Gone with the Wind Lamps such as Grape Pattern, Blue Satin Glass,
Etc.; Bracket Lights; Assortment of Kerosene Lamps w/Half Shades; Etc.

STONEWARE

APP. 33-PCS. OF DECORATED JUGS & CROCKS such as Sipe &
Nichols Batter Jugs, Crocks & Jugs; Cowden & Wilcox 4-Gal. Bird
Decorated Crock, Sunflower, 2-Gal. Jug w/Man in the Moon (majority of
stoneware is Cowden & Wilcox, Nichols & Sipe & Hyssong); Assorted
Redware Crocks; Redware Flower Pot; Etc.

MISC. ITEMS

Tinware Decorated by Duncan such as Cake Pans, Etc.; Assortment of
Oval & Deep Picture Frames; Early Baskets; Oil Painting on Canvas in
Gold Leaf Frame; Victorian Wall Mirror; (8) Quilts - 1 Applique; Early
Wall Mirror; Medium Size Rayo Lamp, Electrified; Sadirons; Candle
Mold; Boot Jack; Tin Buckets; Wagner Child's Gypsy Kettle; Butter
Bowls; Coffee Grinders; Railroad Lantern; Trivets; EARLY SAMPLER
DONE BY ANNA MARIA CLARK IN HER 11TH YEAR OF HER AGE
1844; Counter Top Scales; Stereoptican Viewer; Edison Cylinder Records;
Mantel Clocks such as OG Ansonia, Steeple, Etc.; Currier & Ives of the
Washington & Lincoln Family; Child's Hobby Horse; Child's Teddy Bear
on Wheels (app. 24" L.); Child's Miniature Wall Cupboard; National Cash
Registers; Wind-Up Toy Train by Marx; Donald Duck Hand Car by Lionel
No. 1107; Tin Fireman Wind-Up Toy by Marx; Graphophone; Etc.

FURNITURE

Mahogany Wall Table; 6-Leg Poplar Dropleaf Table; Mahogany Duncan
Phyfe Wall Table; 9-Pc. Mahogany Duncan Phyfe Dining Room Suite;
Assortment of Plank Bottom Chairs; Walnut Dropleaf Extension Table;
Soft Wood 6-Leg Dropleaf Table; Chairs & Rockers Decorated by Duncan;
(2) Blanket Chests; 4-Leg Cherry Dropleaf Table; 4-Pc. Mahogany Queen
Anne Bedroom Suite; Schoolmaster's Desk; Very Unusual Victorian
Cherry & Curly Maple Chest of Drawers; Jenny Lind Spool Bed,
Refinished; Piano Stool; Empire Bureau; Dough Box on Legs (new legs);
Assorted Rockers; Spool Stand; 1-Drawer Splay Leg Soft Wood Farm
Table; Hepplewhite Tilt Top Table w/Urn Pedestal; Early Tilt Top Table
w/Claw Feet & Carved Knuckles (supposedly belonged to Col. Hunter from
Fort Augusta); Cherry Tilt Top Stand; 2-Drawer Soft Wood Stand;
Hepplewhite 1-Drawer Cherry Stand; Arrowback Plank Bottom High
Chair; Etc.

TERMS: CASH. PERSONAL CHECKS ACCEPTED ONLY FROM
PERSONS HAVING AN ESTABLISHED ACCOUNT WITH AUCTIONEER
OR APPROVAL PRIOR TO DAY OF SALE.

For complete listing send name, address and stamp to Auctioneer.
Exhibition: 7:00 to 10:00 A.M. Day of Sale Only.

LEE D. DOCKEY,

AUCTIONEER - ESTATE LIQUIDATOR - APPRAISER

P.O. BOX 164, PILLOW, PA 17080

PHONE: 717-758-6004

AUCTIONEERS:

DOCKEY #AU229L, DOCKEY #AU1683L & DEPPEN #AU1957L