

## Penn State given \$11,500 for tobacco research

LANDISVILLE - R. J. Reynolds Tobacco Co. today presented the Pennsylvania State University with grants totaling \$11,500 for use in tobacco research and extension and the discretionary use of the dean of the College of Agriculture.

The discretionary grant will be

used by the dean for the enhancement of agricultural programs at the university. The research grant is to be used to help support variety development, quality improvement, and curing of Pennsylvania tobacco under the direction of Dr. John Yocum. The extension grant will be used for

general support of extension projects.

J. D. Rogers of the R&D Agricultural Programs Division at Reynolds presented the check for the grants to Dr. John O. Yocum, senior research associate and superintendent of the Southeastern Field Research Laboratory.

Reynolds had earlier funded a \$1,000 scholarship for Excellence in Agriculture for Timothy J. Fritz of Lancaster.

R. J. Reynolds contributions to tobacco research, extension, and education programs at Penn-

sylvania State University have totaled more than \$81,000 since 1979. Since 1962, Reynolds contributions to similar programs at land-grant universities in tobacco producing states have totaled more than \$6.9 million.

### MAILBOX MARKET

For Sale - 1979 Chev. Van, PS, PB, AT, customized, \$4,900. 38" brass fireplace screen and irons. \$10. Bucks Co. 215-536-2284

For Sale - Long tongue and PTO shaft for 892 NH chopper, used 1 season. Wash. Co., MD. 301-797-1906

Wanted - Canoe, good condition, prefer aluminum. A chance to turn your canoe into quick cash. Carroll Co. 301-775-2070

For Sale - AC B rebuilt magneto w/cultivators, \$225.; Mack V8 head, \$125.; IH Cub Cadet w/mower deck, \$500. Schuylkill Co. 717-467-2792

Wanted - Wheels for hay baler or wagon w/6-6" bolt hole, 14" or 15" tire. Luzerne Co. 717-788-1827

For Sale - 1980 Harley Davidson sportster, metallic blue, recently tuned, new front tire, extras, excellent condition, \$3,000. Dauphin Co. 717-469-0126

For Sale - (1) Buck, 1 yr. old, black face. Berks Co 215-856-7619 a.m. or p.m.

For Sale - 1160 "Special" Case self propelled combine, cab, 13' head, w/Hart-Carter floating bar. Cambria Co 814-886-4377

For Sale - Tioga Co., Log Cabin on 1 acre, 2 bedrooms & bath, screened porch, furnish \$30,000. 717-724-7541

Wanted - Old milk cans for purpose of decorative painting. Gloucester Co 609-478-2616

Wanted - Wooden Silo Doors for Unadilla Silo William Bird, Jr., R.D.2, Box 242, Asbury, NJ 08802. Hunterdon Co 201-479-4379

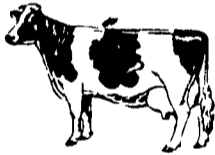
For Sale - Rambouillet X Finn Ram, Ohio State & Schultz bloodlines. This Ram Xed on Blackfaced Ewes. Butler Co. 412-368-8188

For Sale - 3 pt. hitch 6' snow blower, used very little; Butchering kettle stove, fits all kettles Perry Co. 717-589-3187

For Sale - Used 16' Ficks Silo. Also Patz Barn Cleaner Unit and Corner Wheels 717-933-4616

For Sale - 1500 1st cutting Alfalfa; Snow plow blade, \$75.; Loader for Super C, \$175 Northumberland Co. No Sunday Calls. 717-758-8671

For Sale - Old Safe dated 1888, \$200 215-286-9192



**HAVING A DIFFICULT TIME KNOWING WHEN YOUR COWS ARE COMING IN HEAT - OR KNOWING IF SHE'S IN A TRUE HEAT?**

### **DON'T GUESS - TEST USE AN OVATEC**

- Tells You When To Breed - OVATEC is an ovulation detection instrument that will assure you of shorter calving intervals, decreased services and higher conception.

Indication of reproduction health problems such as:

- Cystic Ovaries
- Late Ovulating Cows
- "Silent Heat" Cows
- Post Partum Infections

Mail to: **Oregon Sales**  
3890 Oregon Pike  
Leola, PA 17540  
Or Call  
(717) 656-8380

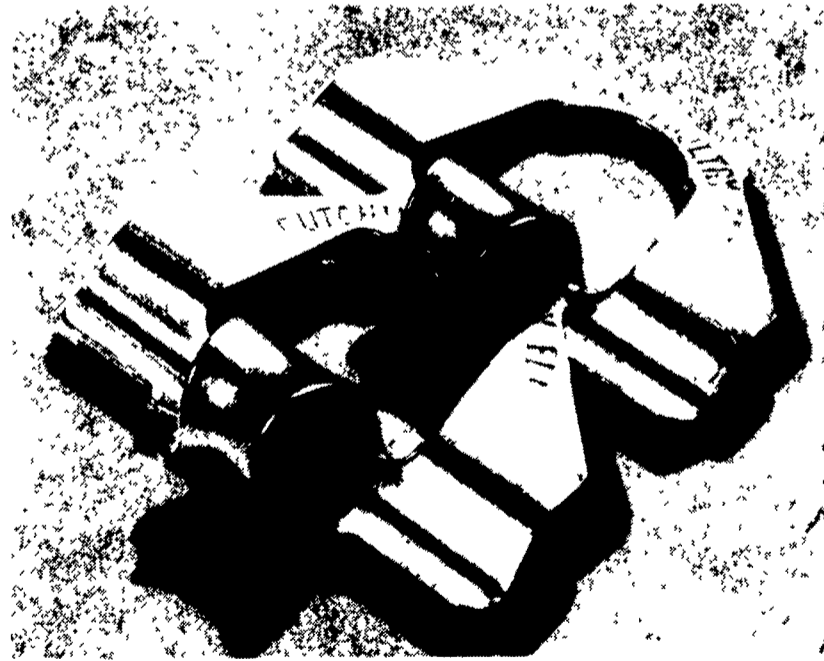
8/10/85

Yes, send me information about Ovatec for cows

Name \_\_\_\_\_  
Address \_\_\_\_\_  
City \_\_\_\_\_ State \_\_\_\_\_  
Zip \_\_\_\_\_ Phone ( ) \_\_\_\_\_

# Big Dutchman.

## CONTROLLED CAGE FEEDING SYSTEMS



Big Dutchman chain and trough feeding systems give you the "best" controlled feeding for high density egg production operations. With feed costs continually rising control is essential for feed economy so don't settle for anything less than Big Dutchman.

Contact us for additional personalized information on these Big Dutchman feeder benefits.

- HIGHER PRODUCTION
- LESS WASTE SPILLAGE
- LIMIT FEEDING
- REDUCED OPERATION COST
- LOWER MORTALITY
- LESS EQUIPMENT WEAR

Authorized  
**Big Dutchman.**  
Distributor

**H**  
**HERSHEY EQUIPMENT**  
**COMPANY, INC.**

SYCAMORE IND. PARK  
255 PLANE TREE DRIVE  
LANCASTER, PA. 17603  
(717) 393-5807

Route 30 West at the Centerville Exit