

**32 MISCELLANEOUS**

**AIR COMPRESSOR**  
Quincy Model 5120, 4 cyl., 2 stage, 125 CFM, 25 hp., 220/440, 3 ph., w/line starter, on 120 gallon horizontal tank, excellent condition. \$3500/offer. 301-854-2747.

Amish storm front carriage, fiberglass body, hydraulic brakes, excellent condition. David E. Smucker, 2141A Old Philadelphia Pike, Lancaster, PA 17602. In Lancaster Silo Drive off Horseshoe Rd., farm on right.

Approx. 1400' of 1/4" black galvanized pipe, good as new, .35 per foot. 814-793-3410.

Bandsaw blades made to order. Wood, metal or meat cutting. UPS shipping. 717-733-0511. Martin's Sharpening, R.#1, Ephrata, PA 17522

Bought and sold new and used cardboard boxes, drums, Pint, Quart & Gallon Containers. Reliable Recyclers, 178 Greenfield Road, Lanc., PA, 17601, 717-397-7695

CASH for your piano or sell on consignment. Call Ken at 717-392-3233.

Electric Yale crane truck K42 SH-6-7-78 maximum capacity, 6,000 lbs. \$2,500. 215-542-7980. 215-646-9057.

FOR SALE: Amish buggy in good condition. Apply to: Elam P. Kauffman, RD2, Box 125, Honeybrook, PA 19344.

FOR SALE: New and used automatic washers, dryers, gas and electric refrigerators, ranges, used wringer-engine washers. Open 7:30 to 4:30; Saturday, 7:30 to 12:00; evenings by appointment. Myers's Washer-Dryer, Rt. 772, between Brownstown and Leola. 717-656-7169.

For Sale: 24" planner, good condition. Best Offer Aaron B. Beiler, 146 Pond Rd., Ronks, Pa 17572.

For Sale: (2) 100 h.p. Westinghouse motors, 1125 R.P.M. 220/440 3 phase frame 507. \$1,000 Each/Offer. Delivery Available. Call 301-531-5893

Hegner 200 wood lathe w/duplicator, almost brand new, used only 10 hrs., extra tooling included, save \$700. 717-739-4816

**PRICE WAR!**

Best flashing arrow sign, \$245 complete. Lighted, no arrow \$227. Nonlighted \$179. Warranty. See locally. Factory 1 (800) 423-0163, anytime.

**Wanted:** model cows and bulls, all types, also interested in toy cattle, especially old ones, and realistic figurines Top prices paid Call 717/394-4956 after 5:30 pm or write to DR Bohn, 1709 Zarker Rd Lancaster, PA 17601, to describe your items Make your attic a source of income!

**34 AUTOS**

For Sale '83 Horizon, 4-dr, 4-spd., 12,000 miles, \$3,295 215-683-7943.

1950 Plymouth 4 door Sedan, 6 cylinder, good motor, fair body. Restorable. 717-872-5114.

82 Bronco, auto., AC, AM-FM stereo, bucket seats, PS, 2-tone paint. \$7395. 814-793-2339.

**35 TRUCKS AND TRAILERS**

1983 Ford F250 Super Cab pickup, 460 4 speed, PS, PB, air, dual tanks, AM-FM, 8700 GVW. \$8,900.; '78 Ford Ranger XLT Camper Special F250 Super Cab pickup, 351 auto., PB, PS, air, cruise, AM-FM, dual tanks, excellent condition. \$4,900. 717-733-2873

1983 Trailer w/2 axles, electric brakes & 12 ply tires. Licensed at 8200 lbs. 7 1/2'x14', \$2,695. Two 8' trailer axles w/electric brakes & 8.14.5 6-ply tires, \$100 each. 717-532-6367.

1984 Chevrolet Silverado, 4 wheel drive, AC, PS, PB, automatic, dual tanks, bed liner, cruise, many extras, excellent condition, \$11,000. 301-795-2527.

1985 GMC Sierra, dual wheel crew cab pickup, 6.2 diesel, 4 speed, PS, PB, air, AM-FM, dual tanks, camper package, 10,000 GVW; '84 Ford XL F250 4x4 Super Cab pickup, 460 auto., PB, PS, air, AM-FM, trailering package, excellent condition. 717-733-2873

200hp Model 1150 Cat engine for sale. 35,000 miles complete with starter, alternator, radiator, clutch bell, etc. Also, have one 5-speed transmission for C-O 700 Series Ford truck, Spicer model #5652. Also, 2 rears, one 26,000 lb. One 22,500 lb. 717-687-7574 evenings.

2-1979 Ford LN9000, 238 Detroit, Fuller RT910, 12,000 lb., FA, PS, 23,000 RA, new Good Year 11x22.5 radials, low mileage, current PA inspection and licensed. Call Dave at Seeco, Inc., 215-948-8055.

3-1974 IHC Model 2010A tractors, VS478 engine w/5-speed trans and 2-speed 23,000 lb. rear, currently licensed and inspected, excellent condition. \$2,800 ea. Have same model units for parts. Call Dave at Seeco, Inc., 215-948-8055.

'76 IH 1750, SA dump, 170HP diesel, 5&2, 26,000 GVW, 9 1/2' 5 yard box, \$7,000. Lanc. Co. 717-626-5438.

'78 Freightliner conventional tractor, 400 Cummins, 13 speed, 38,000 lb. rear, tires 11-24-5, 186" wheel base, good running condition, wet line. Denver, Pa. 215-267-6400

'79 GMC Sierra Classic dual wheel pickup, 454 auto., PB, PS, camper special, dual tanks, new radials, excellent condition. \$7,200. 717-733-2873

'83 Chevy heavy duty 3/4 ton 4x4, 350 4 speed, PS, PB, 8600 GVW, excellent condition. \$8,700.; '81 GMC Sierra Grande 1/2 ton 4x4, 6 cylinder, heavy duty, 4 speed, PS, PB, AM-FM, excellent condition. \$6,950. 717-733-2873

'83 Chevy heavy duty 3/4 ton pickup, 350 4 speed, PS, PB, AM-FM, 8600 GVW, 19,000 miles, excellent condition. \$8,500.; '81 Chevy Silverado heavy duty 3/4 ton pickup, 292 6 cylinder, 4 speed, PS, PB, air, AM-FM, dual tanks, 8600 GVW, 40,000 miles, excellent condition. \$6,950. 717-733-2873

'84 Chevy Scottsdale 1/2 ton, 4x4, 305 auto., PB, PS, AM-FM, rally wheels, 2 tone paint, excellent condition. \$9,950.; '84 Ford F250 4x4, 300 6 cylinder, 4 speed, PS, PB, dual tanks, 8,000 miles, like new. \$9,950 717-733-2873

For Sale: 21' 3 axle air slide lime trailer, excellent condition. 717-724-3974

For Sale: 2-1973 International Hay trucks with decks, one with 20' body, and other 24' body, in good condition, \$3,000 each or best offer. 1975 Ford 10' cattle truck, \$1,200. 1971 Chevy 16' truck, \$1,000. Phone 717-776-7888.

International 1980, DT466 engine, with or without 16' Coldplate body Excellent shape. 301-795-9375.

Int. 18' van body, 21,000 GVW, 89,000 mis., \$1,500 or Best Offer. After 6PM 717-733-2902.

NEED CASH? We buy unwanted trucks and parts, scrap aluminum of any kind. Wrecked dumps, vans, flats, tank trailers, etc. Call 215-944-9871.

Stoltzfus wet lime spreader, mechanical drive. Excellent shape. 301-457-4287. (Price \$2000).

Trailers For Sale: 10, 35-45' flats, some have sidekicks. Trailmobile 45x13'6" van. 40' furniture van, 15" wheels. 40' Gindy open top. 40' boat trailer. 4500 gal. tank trailer. 42' Great Dane, stainless reefer. NWD30 and NWD50 Thermo King units. Keens 717-626-5420.

10 1/4 acres with metal poll barn, Dauphin Co., West Hanover Twp., 2 mis. from I-81. \$34,500. 717-469-7351 or 469-2632.

10' Stoltzfus Lime & Fertilizer Spreader, air operated booms. 717-786-4158.

10-1976 Budds, 45', 13'6" exterior, post trailers, fixed tandems, 101" rear door openings, 11x24.5 Budd wheels, many with new tires, current PA license and inspection, road ready. Call Dave at Seeco, Inc., 215-948-8055.

16' Morgan Truck Box w/4" polyurethane insulation, heating & cooling Thermo-King units, all good condition, \$1800 installed on your truck. Call weekdays, 8am-9pm, 717-532-5511

16' Reading Flatbed, steel side racks, heavy duty, \$800. 717-382-4881.

1945 Int K5, 44,000 original miles, one owner, new bed and tires \$1,500. 301-833-9091.

1964 GMC tractor, V6, 5x3 trans., twin screw, good dependable work truck. \$2,800. 717-792-2886.

1968 Int. truck, 1800# with 26' Grove tilt bed body, very good condition. Phone: 301-398-0680

1969 C60 Chev. dump truck 9' bed, 366 engine, PS, AB, 36,000 GVW, good condition, \$6,700. 717-733-0252 or 733-4269.

1970 Ford F700 single axle, flat bed, 26,000 GVW, good condition. \$2,500.; 28' flat trailer, good condition. \$2,900. Both with or without log bunks; 1968 Ford 850 C and C, 56,000 GVW for parts. Northumberland Co. 717-286-1064

1970 Mack 10 wheeler, 16' stone dump, \$10,500. 301-795-9375.

1970 Mack Tandem dump, low miles, \$10,500. 301-833-9091.

1971 Ford, 600 series w/16' grain dump, factory rebuilt engine, 10,000 miles. New front tires, new paint, excellent condition. Call 717-362-3492.

1972 Ford C8000, 22' flatbed body, 4' sides, bows and tarps, 3208 Cat diesel. After 5PM, 215-681-4002.

1973 Cabover Peterbilt Tractor, 903 w/10 speed; Reyco suspension. 215-822-1720.

1974 CNT 9000 Ford w/sleeper, 10 speed single axle w/air-tag 671 Detroit, 10,000 mile on major overhaul. 717-734-3584

1974 Western Star w/1693 cat engine, rebuilt 1980 JxJ 32 yd. aluminum body, very good. Also other silage trucks. 203-758-2765.

1976 IHC CO 4070B single axle tractor, 290 Cummins, 10SP, very good condition. 717-464-2874.

1976 Mazda pickup truck, good condition. 717-949-3498.

1977 Ford LN8000, Cat 3208, 5 speed trans., 2 speed rear, 11x22.5 open, under 200,000 on chassis, under 100,000 on engine, current PA license and inspection. Call Dave at Seeco, Inc., 215-948-8055.

1979 Ford F-600, 3/0 V-8, 4SP trans., 2SP axle, 14' van box, Ziebart. Asking \$4,500. 717-833-4561.

1980 Ford F350 w/Harrisburg stake body flatbed and metal sides. Low mileage. Excellent condition. \$7800, or best offer. 717-359-4542.

1980 Ford F350 dual wheel 12' stake body, 351 auto., PB, PS, AM-FM, 10,000 GVW, 13,000 original miles. \$7,900.; 1980 Ford F350 dual wheel, 9 1/2 stake body, 300 6 cylinder, 4 speed, PS, PB, 30,000 miles, excellent condition. \$7,800. 717-733-2873

1980 Ford C700, 24,000 GVW, gas, will accept 26' bed, \$5,000/Offer. 301-833-9091.

1980 GMC Cab & Chassis, 108" Cab to axle. 900x20 tires, P/S, 5 speed, 2 speed. Detroit 4-53T, complete new motor overhaul guaranteed. \$9,500. Bucks Co. 215-297-8354.

1977 GMC 35 Suburban, 454 V8, loaded, trailer package, 3 seats new paint, rubber. 717-927-6564

1977 Int'l. 1750 Cab & Chassis, 108" cab to axle. 3208 Cat motor, 5 speed trans., 2 speed rear. 900x20 tires, new paint, \$6,500. Bucks Co., 215-297-8354.

1979 Chevy 1 ton cattle truck, 12' Eby aluminum box with gate and 2 roll ups, good shape. \$6,450. 717-278-2350

For Sale: 1978 Demco combine trailer, 8' wide expands to 12' wide, heavy duty, very good condition. \$4,500. 301-348-5247 call after 6 p.m.

For Sale: 1982 Datsun Diesel pickup, black, 5-spd., 20,000 miles., excellent condition, \$3200 or best offer. 215-683-7943.

For Sale: 1978 C30 Chev. Truck with hoist & calcium pump. Call 717-374-1989.

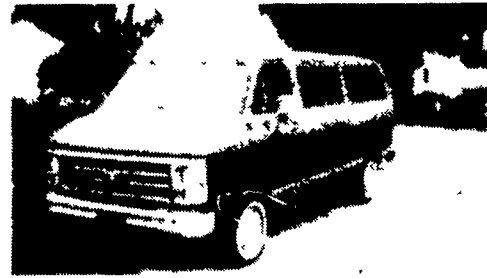
**USED TRUCKS**



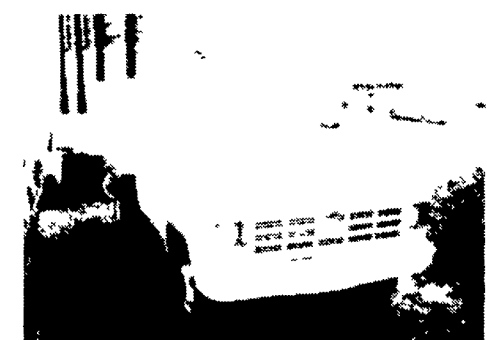
'83 Chevy 1/2 Ton 4x4, V8, PS, PB, Auto. Overdrive, Aux. Fuel, AM/FM Cassette Player, 36,000 Miles **\$8,850**



'83 Chevy Scottsdale, V8, Auto., PS, PB, AM/FM, Aux. Fuel, 28,000 Miles **\$7,950**



1979 Chevy Beauville 8 Pass. Van, AT, PS, PB, Air, 2 Tone Paint, Radial Tires **\$6,795**



1977 Chevy C30 Stake Body, Dual Wheel, 6 Cyl., 4 Spd., 25,000 Original Miles, 1 Owner **\$4,500**



'84 Chevy S10 4x4 6 Cyl., 5 Speed, PS, PB, AC, AM/FM Stereo, Tilt Wheel, 14,000 Miles **\$10,800**



'84 Chevy. 3/4 Ton, 4x4, 8600 GVW, V8, Auto, PS, PB, AM/FM Cassette, 25,000 Miles **\$10,500**

← ← ← ← ← ← ← ←  
**MEASE MOTORS**  
 Auto Sales  
 RD #2, Rt. 72  
 Jonestown, PA 17038  
 717/865-4810  
 1/2 Miles North of Jonestown Intersection  
 → → → → → → → →

**SAVE BIG BUCKS ON OUR TRUCKS**

**FORD F350 Diesel or Gas**

**ALWAYS IN STOCK EBY ALUMINUM BODIES**

Immediate Delivery  
**NEW HOLLAND**  
 Route 23, New Holland, Pa.  
**717/354-4901**

**YES!! ENGLE DOES MAKE IT EASIER!!**

- 84 Ford F150 - 4x2 Pickup, 6 Cyl., 4 Spd., O.D., PS, PB, 1 Owner, Only 10,000 Miles.
- 84 Ford Ranger 4x4, V6, 4 Spd., PS, PB, 1 Owner
- 83 Ford F150 4x4, Auto, 302 V8, 2 Tone Paint, PS, PB, AM/FM Stereo.
- 83 Ford F150 4x2 Truck, 6 Cyl, 4 Spd, O.D., AT, PS, PB, 2 Tone, One Owner.
- 82 Ford Bronco, 4WD, XLT, AT, 302 V8, Blue & White, Rare Find, A Title.
- 82 Datsun King Cab, 4x4 Truck, 4 Cyl., 5 Spd., AC, 1 Owner.
- 79 Ford F150 Super Cab, V8, AT, PS, PB, 1 owner, Rare Find.
- 79 Toyota Long Bed 4x2 Sport Truck, 4 Cyl., 5 Speed, Custom Stripes, Nice Little Truck.
- (2) 78 Ford L-N 8000 Cab & Chassis, Cat 3208 Engine, Diesel, 5 Spd. Over 2, A Title, 186" Wheel Base. Hard Find.
- 68 International Dump 5 & 2 Speed.

In PA The Call's On Us 1-800-242-8075  
 Out of State Call 1-717-692-4841  
**ENGLE FORD, INC.**  
 Rt. 147 North  
 Millersburg, PA 17061

**MARTIN'S AUTO SALES**  
 725 E. Main St.  
 New Holland, PA 17557  
**(717) 354-9967**