

**MAILBOX MARKET**

For Sale - NI 318 Manure Spreader 8t w/tandem axle, in good condition Glenn Herr, Gettysburg, Pa 17325. 717-637-9632

For Sale - Snow Crown cauliflower plants, small or large quantities. Lanc Co. 717-626-5469

For Sale - Seed attachment for JD 13 disc drill. \$25 300 Ford engine, has knock, \$75. Perry Co. 717-834-3882.

For Sale - 75 26x2 125 tires, 30 lbs P.S.I \$3 00 ea Elam M. Ebersol, 558 Gibbons Rd., Bird-In-Hand, Pa. 17505

For Sale - Front end unloading unit for Grove self unloading wagon, \$125. Cecil Co., MD. 301-658-6325.

For Sale - 1965 F750 tanker. Three compartments, 1500 gal capacity. Excellent condition. Rebuilt engine. \$2,500 301-658-2900 days

For Sale - 1978 Philips 5th wheel flat bed gooseneck, \$3,000. 24' trailer, excellent. Cayuga Co., N.Y., 315-626-6679.

For Sale - Samoyed male 5 years old, AKC. \$100 or best offer. Lanc. Co., 215-445-6026.

For Sale - 1984 Honda TRX 200, 4 wheeler Excellent condition. Nearly new. Lanc Co. 717-665-7046

For Sale - Service age Boar's, Yorkshire and Yorkshire Landrace and Hampshire cross, tested pseudorabies negative Warren Nolt, 717-656-9764

For Sale - JD 12' Roller Harrow Dual hydraulic cylinders Excellent condition \$1800 Frederick Co., 301-775-7519 evenings

Wanted - Oliver rubber tired 17 disc grain drill. Prefer hydraulic lift 717-527-4870

For Sale - E.F.M. Hot Air Furnace. 200,000 BTU. Ideal for shop, quick recovery, good condition. Lebanon Co., 717-273-6018.

For Sale - NH Mower conditioner hitch, \$25. Off 450 mower Lebanon Co., 717-949-3988.

For Sale - Myers hay conditioner w/v belt driven sickle bar Reasonable. Cumberland Co., 717-776-3930.

For Sale - 3RN corn head, \$3,000 343 Snapperhead, \$3,500 for JD harvester Rye, \$4/bu Cumb. Co., 717-423-6188.

For Sale - Metal steps w/platform, JD #9-7' bar mower, Bolens 10hp 36" riding mower. 717-532-7590. Cumb. Co., Pa.

Wanted - 19" Paper silage cutter Hand turn Stewart cow clipper. Levi Lapp R #2, Box 145, Quarryville, Pa 17566 Lanc. Co

For Sale - Brillion 14' cultipacker, excellent condition JD 7 hp tractor and mower Lanc Co. 717-354-5092

For Sale - MF 410 Combine, 13' quick tach grain head, cab, excellent condition, IH mowers mounted Adams Co. 717-259-0473.

For Sale - 4 Yr old Standardbred horse, broke, \$600. Elam R Zimmerman, Old Akron Road off 272, Ephrata, Pa. 17522

For Sale - 9 Redwood Marrietta Silo doors, excellent. Reg. Guernsey bulls of breeding age & younger. New Adams Co., 717-359-4383.

Wanted - Used silage cart at least 66" long. Used feed cart. Both for dairy barn. Hagerstown, MD. 301-824-6310.

For Sale - JD #35 Harvester, 1000 RPM w/1 row corn head, re-cutter screw and spout extension, excellent. Lanc Co., 717-665-4329.

**PUBLIC AUCTION**

YORK CO. VOCATIONAL TECHNICAL SCHOOL  
2179 S. Queen St., York, PA  
South off Interstate 83 at Exit 6.

**WEDNESDAY, AUG. 7, 1985**  
5:00 P.M.

**VIDEO EQUIPMENT:**  
AMPLIFIERS, POWER SUPPLY, CAMERAS, REMOTE PANELS, PROJECTORS CASSETTE RECORDERS, RECORD PLAYER, TV CAMERA.

**ELECTRONIC TESTING EQUIPMENT:**  
TUBE TESTERS, SCOPE, VOLT METER, FREQUENCY METER, WATT METER, ETC.

**SHOP EQUIPMENT & TOOLS:**  
SMALL ENGINE DYNO'S MODEL 25's, SNOWMOBILE DYNO MARK II (Like New), ENGINE LATHE MODEL 80116, POWER TRIMMER, 2 WELDERS, BENCH DRILL PRESS, DRILL PRESS TABLES, ANVIL & STAND, 3'x20" SPRAY BOOTH, COMMERCIAL ART TABLES, COMMERCIAL ART TABERAS, ADDRESS-O-GRAPH, HYDRAULIC HAND TRUCK, HAND TRUCKS, PAINT SHAKER, ARC WELDER, SPOT WELDER, SUN ENGINE TESTER, FLOOR MODEL DRILL PRESS, GRINDER BUFFERS, BELT SANDER FRAMES, 15" BAND SAW, GRINDER STAND, FIRE EXTINGUISHERS (WATER TYPE), DRAWING BOARDS, METAL BAND SAW, 48x48 FORMICA RESTAURANT TABLES, LOCKERS, MODINE GAS HEATERS, 24" FANS, COPY MACHINES, BED, DRAFTING BOARD W/MACHINE, ARMY STRETCHERS, KODAK READY PRINT COPIER.

**OFFICE EQUIPMENT:**  
DESK CHAIRS, REGULAR CHAIRS, BIG FILES, SMALL FILES, TABLE LEGS & FRAMES, FOLDING MACHINE, HEALTH BOOKS, AIR CONDITIONING BOOKS, SORTER.

**AUCTIONEER'S NOTE: ALL ITEMS ARE SOLD AS IS - SOME ARE LIKE NEW & OTHERS MAY HAVE PARTS MISSING OR BROKE.**

FULL SETTLEMENT SALE DAY.  
CASH OR GOOD CHECK.

**YORK COUNTY VO-TECH SCHOOL**  
AUCTIONEER: Blaine N. Rentzel & Others  
Emigsville, PA.  
717-764-6412  
Lic. #761

**RONALD PARSHALL**

**COMPLETE DISPERSAL AUCTION WITH CONSIGNMENT MONDAY, AUGUST 12 at 6 P.M.**

Sale will be held at Teitsworth Sale Lot Barber Hill Rd., Groveland, 8 miles SE of Geneseo, 2 miles SW Conesus Lake. Having discontinued farming Mr. Parshall will sell his entire line of farm equipment along with consignments from other farmers, dealers & lenders.

**Selling:**  
1H 1460 Combine w/6R narrow corn head, less than 1000 hours. (2) AC 190 XT D Tractors. Case 1070 D, w/cab. AC WD. AC 7040 w/cab. IH 706 Gas. Brillion 12' Cultimulcher. Dion S.U. Forage Wagon, 3 beater w/roof, tandem gear, nearly new. Badger 3 beater w/roof, tandem gear, like new Forage Wagon. Gehl S.U. Forage Wagon, 3 beater w/roof, like new. AC 16' drag. NI 323 Corn Picker. Crop Sprayer. MF Hay Baler. Fox 90 Chopper w/hay & 2R corn head. JD 2R cultivator, Bale Mover, gas tanks with pumps, electric gas pump. 1976 Ford 3/4 ton 4x4 pickup w/plow (Farm truck). 1975 Dodge 3/4 ton 4x4 pickup w/hydro turn plow. NH 352 Grinder Mixer, good. Ontario disc drill. IH 540 4 bottom plow. NH 256 Rake, like new. NH 479 Haybine. JD 4r planter w/liquid fertilizer & squeeze pump. Gravity Wagon. Hay elevator, used plate & angle iron. 40' Alum. extension ladder. 3 hp electric motor. Gehl 1000 Chopper w/2R corn head, like new. 2 Chain saws. 3 Weed trimmers. 2 Wet & Dry Vacs. Trowling machine. 2 Generators. Cut off saw (gas engine). Also, selling large variety of consignments including other farm machinery, construction equipment, building materials & dairy supplies.

Auctioneer & Sales Managers,  
Geneseo, N.Y. 14454

Roy Teitsworth, Inc.  
PROFESSIONAL AUCTIONEERS  
716 243 1563

For Sale - 5th Wheel trailer 3 axle 32', 8' over 5th wheel, 26' flat Also, 5th wheel Berks, 215-488-1440 evenings.

For Sale - Two tractors, JD 620G and Case 730D, both w/3-point and live PTO 717-437-2530 Montour Co

For Sale - 800' Heating pipe & oil burner with 4" bins 100 pieces asbestos boards, 2'x6'. 717-626-8257

For Sale - Case S.C. farm tractor, JD 2 btm plow, Make Offer Military Jeep 1944 Montg Co 215-933-2469

Notice - FREE Liquid chicken and hog manure Lanc Co., White Horse, Gap area 717-768-2056

Notice - MoorMan's Mfg Co Specializes in minerals for sheep, 50 yrs of research. Call for more information. Rep Roy Diller, 717-597-3031

**Sale Reports**

A Public Sale of farm equipment was held July 27 for the estate of Jacob Gingerich, 3 miles southeast of Starview, York Co., Pa. The farm and antiques will be sold on August 24th. There were approximately 400 at the sale.

Some prices received were: J.D. 520 tractor \$2550, J.D. B (1942) tractor \$700, J.D. #5 mower \$155, Falker potato plow \$155, N.I. 323 corn picker \$2900, wagon seat \$145, flat wagons \$350 & \$400, J.D. 290 corn planter \$250, and 1967 Chev. pickup truck \$800.

The auctioneer was Blaine N. Rentzel.  
XXX

A Public Auction of carpenter tools and lumber was held July 27 for the estate of Joseph B. Zeiders, Cold Run Rd., east of Route 82 in Geigertown, Berks Co., Pa.

Some prices received were: Dewalt radial arm saw \$1350, Delta band saw \$600, Delta table saw \$625, drill press \$190, blacksmith anvil \$90, gas hit and miss engine \$640, old express wagon w/wooden bed \$34.50 and 450 board feet walnut rough sawed 2" thick lumber \$540.

Elton and Rodney Horning were the auctioneers.  
XXX

**DISTILLERY SPRINGS FARM GRADE HOLSTEIN SALE**

Due to a farm accident in late June, I will discontinue my milking operation on Farm No. 2 located 2 miles north of Petersville (Route 180) in Frederick Co., Md. From US 340 take the Petersville Exit and go west on Route 180 for 2 miles, then turn right on Catholic Church Road. Follow this road to the farm - watch for sale signs.

**MONDAY, AUGUST 12, 1985**  
10:00 A.M.

**140 HOLSTEINS SELLING 140**  
118 COWS - 5 BRED HEIFERS  
17 CALVES  
DHIA Herd Average - 17,290  
Cows avg. over 50 lbs./day now

35 Fresh or Due in  
July, August and September  
Also a Group of Fall Freshening Cows

This is a young herd with 50 cows milking in their first lactation and 30 more in their second. The herd has been put together over the past year with an eye towards young, typy, high producing cows.

Cows sell with records over 20,000 and up to 879F.

A number of 2 yr.-olds making 16,000 to 18,000 and due back for fall.

A Large Offering with Something for Everyone Whatever Your Needs.

Tested for Interstate Shipment  
Pregnancy Examined

Terms: Cash or Good Check  
Catalogs at Ringside Lunch available

Sale Manager's Note: Mr. Poss is selling the entire grade herd housed at Farm No. 2. The Registered herd at Farm No. 1 will be sold on October 4. Watch for future ads.

Herdsmen  
Kenneth D. Smith  
3590 Colebrook Court  
Middletown, MD 21769  
301-371-9611

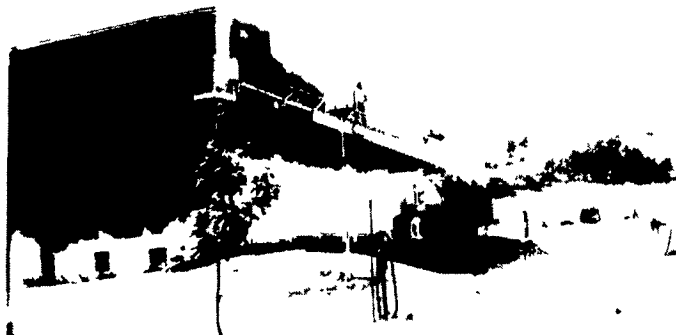
Owners  
**TOM AND BEVERLY POSS**  
5219 Burkittsville Rd.  
Jefferson, MD 21755  
301-695-6917

Sale Manager  
**REMSBURG SALE SERVICE**  
P.O. Box 177, Jefferson, MD 21755  
301-473-8214

**FARM BUILDINGS NEED PAINTED?**

Let Seal Crete **BRIGHTEN** Up Your Life

"The Farm Painting Specialist" Since 1961



**We Are The Fussy Ones**

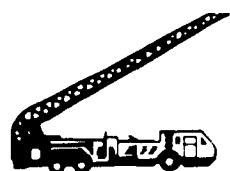
NOW's The Time To "SPRUCE UP" Your Farm's Appearance

*The Job Must Be Done To Your Satisfaction*

OUR SPECIALITIES ARE:  
**AGRICULTURE - COMMERCIAL - INDUSTRIAL - CHURCHES**

- Barn Painting
- Milk House
- Roof Coating
- Water Proofing Silos
- Stucco Farmhouses

For FREE Estimate CALL



**Seal Crete Inc.**

PAINTING & WATERPROOFING  
RD 2, Box 417, Ephrata, PA 17522 • 717-859-1127