

# Livestock market and auction news

## St. Louis Cattle

Thursday, Aug. 1  
**Report Supplied by USDA**  
 Receipts this week 2,100  
 Week Ago 2,300  
 Year Ago 3,300  
 Compared with last week, slaughter steers and heifers 1.50-2.00 lower. Cows 1.00-2.00 lower, instances 3.00 lower on high-yielding utility. Bulls weak to 1.00 lower. Supply mainly choice steers and heifers and around 10% cows.  
**SLAUGHTER STEERS:** Mixed

choice and prime 2-4 1100-1300 lbs. 51.00 early, not tested late. Choice 2-4 950-1300 lbs. 48.50-51.00, closing 48.50-50.00. Mixed good and choice 2-3 900-1250 lbs. 47.00-49.00. Good 2-3 900-1200 lbs. 44.00-47.00. Mostly good 2-3 1100-1500 lb. holsteins 39.50-43.00.  
**SLAUGHTER HEIFERS:** Mixed choice and prime 2-4 875-1150 lbs. 48.50-49.00; 3-4 925-1100 lbs. 45.00-48.00. Choice 2-4 850-1100 lbs. 46.50-49.00, closing 46.50-48.50. Mixed good and choice 2-3 800-1000 lbs.

45.50-48.00. Good 2-3 700-1000 lbs. 43.00-46.00.  
**COWS:** (Closing week sales) Breaking utility and commercial 2-4 33.00-35.00. Cutter and boning utility 1-2 33.00-35.00. High-yielding utility 1-2 35.00. Canner and low cutter 1-2 31.00-33.00. Shelly canner 1-2 27.00-31.00.  
**BULLS:** YG 1-2 1050-2000 lbs. 42.00-47.00, mostly 42.00-46.00.  
**Weekly Sheep Auction August 1**  
**National Stock Yards**  
 Receipts around 500 head.

Compared to last week, spring slaughter lambs sold very uneven, woolled were 4.00-5.00 lower; shorn under 105 lbs. 6.00-10.00 lower; shorn over 110 lbs. 1.00 lower. Feeder lambs 6.00 lower. Supply moderate, mostly shorn slaughter lambs.

**SPRING SLAUGHTER LAMBS:** Mixed choice and prime 90-105 lbs. woolled 63.00-70.00. Same grade shorn 90-105 lbs. 60.00-70.00; shorn 110-120 lbs. 70.00-75.00.

**SLAUGHTER EWES:** Utility to good 15.00-20.00.

**FEEDER LAMBS:** Mixed choice and fancy 75-95 lbs. 57.00-62.00.

**GOATS:** 15.00-26.00 per head.

**FEEDER STEERS:** Medium and large frame 1: 300-500 lbs. 64.00-68.00; 500-700 lbs. 60.00-64.00; 700-900 lbs. 52.00-56.

Medium and large frame 1-2: 300-500 lbs. 54.00-60.00; 500-700 lbs. 55.00-56.00; 700-900 lbs. 46.00-50.00.

**FEEDER BULLS:** Medium and large frame 1-2: 300-500 lbs. 55.00-57.00; 500-800 lbs. mostly 49.00-52.50.

**FEEDER HEIFERS:** Medium and large frame 1: Two lots 375 and 475 lbs. 57.00 and 54.00 respectively.

Medium and large frame 1-2: 400-800 lbs. 46.00-51.00.

### TOP PRICES FOR DOWN, CRIPPLED AND AS IS COWS, BULLS & STEERS

Slaughtered Under Federal Inspection  
 Paid On Dressed Weight

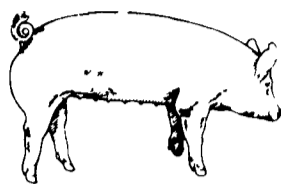
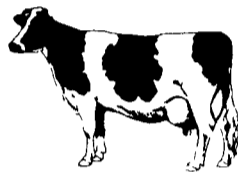
Tom Mulvaney  
 Livestock Trucking  
 (201) 454-4247

#### HANDLING:

Warren, Hunterdon, Sussex  
 And Somerset Counties, New Jersey

#### IN PENNA:

Northampton,  
 Bucks And  
 Lehigh Counties



### EMERY'S BUYING STATION

OPEN TO RECEIVE  
 YOUR MARKET HOGS

AT THE GREEN DRAGON MARKET  
 RD 4, EPHRATA, PA 17522  
 1 MILE NORTH OF EPHRATA  
 ON NORTH STATE STREET.

HOURS: MONDAY, TUESDAY, and  
 WEDNESDAY 6:00 A.M. to 11:30 A.M.  
 215-458-5677 Residence  
 717-733-9648 Office

YOU ARE PAID FOR YOUR  
 HOGS IMMEDIATELY

Ken & Lois Emery, Proprietors

## St. Louis Feeder Cattle

Thursday, Aug. 1

Report supplied by USDA

**FEEDERS:** (Including around 400 at the regular Thursday auction.) Feeder steers 1.00-3.00 higher. Feeder heifers mostly steady in a very light test, except for a few lots of calves sharply higher than previous weeks. Supply light, mostly steers.



**BREAKING MILK RECORDS!**  
 Lancaster Farming Carries  
 DHIA Reports Each Month!

## SMUCKER'S SALES & SERVICE, INC.

RD #2, BOX 21  
 NEW HOLLAND, PA 17557



12-36 bhp

TS2/TS3  
 AIR  
 COOLED  
 DIESELS



FOR PROMPT SERVICE CALL  
 717-354-4158 OR IF NO ANSWER  
 CALL 717-354-4374

"An Idea Whose Time Has Come."



- ★ CHLORACHEL-50, 50 lb. . . . . 86.60
- ★ CSP-250, 50 lb. . . . . 121.60
- ★ TYLAN-10, 50 lb. . . . . 60.65
- ★ LINCOMIX-20, 50 lb. . . . . 249.05
- ★ FUROX-50, 50 lb. . . . . 67.45
- ★ SELENIUM-90, 50 lb. . . . . 5.48

Brokering  
 Vitamin Mineral  
 Premixes  
 Feed Grade Antibiotics

**LANCASTER, PENNA.**  
 1829 William Penn Way  
 1-800-848-1619

Prices Subject to Availability - Call For Delivery Area

## Galen S. Spickler Inc.

801 Milton Grove Rd. South  
 Elizabethtown, PA 17022  
 717-653-4957

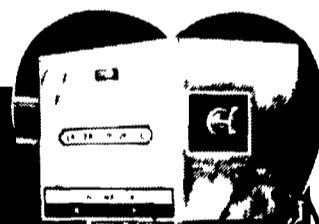


Buying/Hauling  
 Leghorn Fowl Pullets  
 Turkeys Broilers

Donald H. Reinhart Rep.  
 717-687-9039

Crew Available With Carts

## The Heart of every EASTERN CROWN Tank Washer



... is the electronically accurate control system that translates your instructions to the washer itself.

Complete Automatic Tank Washer Includes:  
 Electronic Controls  
 1 or 2 Spinners  
 Pump and Hose

### AVAILABLE WITH Automatic Electronic Control

Say goodbye to the inconvenience of hand washing forever. Eastern Crown has perfected a clean-up system that's entirely automatic. At the flick of a switch your unit washes, rinses, sanitizes and drains while you tend to other chores. You know it's the best because the Eastern Crown name is on it. Special spinners spray-clean with such force that they sanitize much more thoroughly than is possible by hand.

**TWO STEP ECONOMY PURCHASE PLAN.** If now is not the time to go fully automatic then take advantage of Eastern Crown's flexible plan and go semi-automatic by using a timer with the pump unit which is available separately. Add the control unit later. Here's an easy way to make a major improvement at a minor expense. Eastern Crown Tank Washer is easily installed with no structural changes in your present set-up. It's the way to improve quality and increase profits automatically!

Ask your dealer for the new ECI Mini-catalog or write direct to

**EASTERN CROWN INC.**  
 Box 216, Vernon, N Y 13476

DISTRIBUTORS OF  
 QUALITY DAIRY  
 SUPPLIES AND ECI  
 SOFT DESIGN  
 INFLATIONS