

THE OLD FARMER'S ALMANAC

JULY 29-AUG. 4, 1985

Too sultry for adult'ry

Gen. Benedict Arnold appointed commander of West Point, Aug. 3, 1780 Average length of days for the week, 14 hours, 28 minutes National Aeronautics and Space Administration created, July 29, 1958 Full moon July 31 (Wed) First legislative assembly in the American colonies, the House of Burgesses, elected by Virginia planters, July 30, 1619 *Win love in an hour, lose it in three or four*

Ask the Old Farmer: When I was a young girl growing up on a farm, I often heard my parents talk about a 'line storm' What was that? K B, Sea Girt, NJ

The expression refers to storms that occur when the sun crosses the equator in the spring and fall. Such storms are apt to be violent along the coast.

Home Hints: If your quick bread cracks on top, try reducing the amount of flour in your recipe by 2 tablespoons.



OLD FARMER'S WEATHER FORECAST

New England: Beginning of week sunny and warm, mid through end of week rainy and cool

Greater New York-New Jersey: Cloudy and mild with possible thunderstorms at week's beginning, midweek thundershowers ending, end of week warm with rain

Middle Atlantic Coastal: Week begins with showers, mild temperatures, mid through end of week continuing showers, hot

(All Rights Reserved Yankee Publishing Incorporated Dublin NH 03444)

Oklahoma Cattle

Wednesday, July 24

Report supplied by USDA

Estimated Receipts 3500
Same Day Last Week 3369
Feeder Steers and Heifers 500# and down steady to 1.00 higher; Heavier weights both classes steady to 1.00 lower. Demand good for no. 1 muscled calves. Demand only fair for the Yearlings and the lower grading calves. Bulk supply 500-800# steers and 400-750# heifers; moderate showing lighter weights. All grades represented. Auction sales today 1968 head. Tuesday's final auction count 8307 head.

FEEDER STEERS: Medium and Large Frame 1 250-500# 68.00-74.50. One lot 315# 81.75; 500-600# 63.40-65.25 including load 525# 65.25; 600-700# 59.90-61.75; 700-800# 58.70-60.30; 800-900# 54.75-57.50; lot 1035# 52.70. Medium and Large Frame Mixed 1-2 600-700# 58.20-60.00; 700-800# 55.80-59.00; 800-920# 53.30-55.60. Medium and Large Frame 2 500-600# 56.50-60.00; lot 635# 53.50; package 965# 49.00. Large Frame 2-3 Holsteins 440# 53.50.

FEEDER HEIFERS: Medium few large frame 1 250-260# 64.50-65.00; 300-400# 58.50-63.75; lot 425# 60.00, mates 500# 58.70; few lots 575-625# 53.80-55.50; load 750# 52.60. Medium and Large Frame Mixed 1-2 500-700# 51.25-54.50, very fleshy 49.75-51.25. Medium and Large Frame 2 350-500# 47.00-51.25, lots thin and gaunt 52.50-53.00; 500-750# 46.25-51.50.

WEEKLY TRENDS: Feeder Steers steady to 1.00 higher. Feeder Heifers firm to 1.00 higher, Slaughter Cows, Breakers 1.00-1.50 lower, Boning-Utility 50 cents lower, Canner and Cutter 1.00 higher. Slaughter Bulls 1.00-2.00 lower. (Cow & Bull Trends subject to change Thursday.)

Valley Livestock

Athens, Pa.

Monday, July 22

Report supplied by auction

Holstein Hfr. Calves to 58.00.
Veal Calves 60.00-75.00.
Vealer Bull Calves 55.00-67.00.
Slaughter Calves 40.00-50.00.
Grassers & Feeders 30.00-44.00.
Lambs 45.00-88.00.
Sheep 12.00-25.00.
Hogs, 200 to 250 44.00-47.00.
Sows 36.00-42.50.
Boars 28.00-32.00.
Pigs ea. 10.00-40.00.
Heifers 39.00-42.00.
Steers no top steers.
Steers, feeder 34.00-50.00.
Bulls 38.00-44.00.
Cows, utility 37.50-39.00.
Cows, fat 36.00-38.00.
Cows, medium 34.00-36.00.
Cows, poor or small 25.00-32.00.
Cattle Market easier.
Calf Market easier.
Horses 250.00-350.00.
Ponies to 35.00-100.00.
Goats each 10.00-40.00.
Remarks: We have 10 beef packers buying each week. Send your livestock every Monday.

New Holland Horse

New Holland Sales Stables

Monday, July 22

Report supplied by auction

Reported receipts of 235 head of horses, mules and ponies. Market: stronger.
Local:
Better horses 400.00-610.00.
Driving horses 275.00-900.00.
Riding horses 175.00-300.00.
Lightweight killers 150.00-225.00;
Heavyweight killers 250.00-380.00.
Mare ponies 25.00-60.00; Colts 10.00-20.00; Gelding ponies 25.00-60.00.
Larger ponies 100.00-190.00.

Livestock market and auction news

Dewart Livestock

Dewart, Pa.

Monday, July 22

Report supplied by PDA

CATTLE 206. Compared with last Monday's market, slaughter steers Choice steady. Slaughter cows 50 cents-1.50 lower. Choice slaughter steers 975-1375 lbs. 48.00-53.00, Few Good 44.00-45.75, Few Good holsteins 41.00-44.00. Few Choice slaughter heifers 50.50-54.00, Few Good Holstein 40.85-42.65. Breaking Utility & Commercial slaughter cows 36.00-39.75, Couple 41.50, Cutter & Boning Utility 35.00-37.75, Canner & Low Cutter 31.25-35.25, Shells down to 20.00. Yield Grade No. 1 960-1810 lbs. slaughter bulls, 44.10-48.00, Couple 38.00.

FEEDER CATTLE: Steers & Bulls a Few 400-700 lbs., Medium Frame #1 43.50-54.00.

CALVES 221: Few Choice Vealers 61.00-71.00, Few Good 56.00-65.00, Standard & Good 70-100 lbs. 44.00-47.00, Few Utility 65-85 lbs. 30.00-45.00.

FARM CALVES: Holstein bulls 90-130 lbs. 48.00-73.00, Holstein heifers 90-115 lbs. 50.00-60.00.

HOGS 64: Barrows & gilts 50 cents-1.50 lower. US No. 2-3 230-250 lbs. 43.25-46.50. Sows US No. 1-3 265-550 lbs. sows 33.75-38.25. Few Boars 28.00-32.75.

FEEDER PIGS 156: US No. 1-3 25-45 lbs. feeder pigs 31.00-37.00 per head, No. 1-3 50-65 lbs. 39.00-42.00 per head.

SHEEP 14: Individual Choice 90 lbs. at 59.00, Few Good 50-85 lbs. 46.00-55.00, Few Utility 40-45 lbs. 31.00-45.00. Few Slaughter ewes 10.00-18.00.

Carlisle Livestock

Carlisle, Pa.

Tuesday, July 23

Report supplied by auction

CATTLE (225) Steers: Choice 52.00-53.00; Good 45.60-51.00; Good Holsteins 42.85-43.75; Medium Holsteins 38.25-40.50. Heifers: Medium-Good 44.35-46.00; Couple Utility 32.50-33.50. Cows: High Yield 38.00-39.50; Good 36.00-38.00; Medium 34.00-36.00; Big Middle 33.00-38.50; Shelly 32.00 Down. Fat Bulls: Good 47.50-49.50; Medium 42.75-47.00.

FEEDER CATTLE (81 Head) Steers: Choice Individual 69.00;

Medium 49.00-56.00. Steers Medium-Good 46.50-52.50. Heifers: Choice Individual 58.00; Good 46.00-48.00; Medium 41.00-45.50. Bulls: Medium 36.00-49.00.

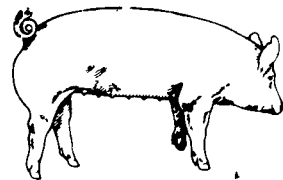
VEAL CALVES (208 Head) Good 65.00-74.00; Medium 59.00-64.00; Light 51.00-58.00 couple weak 50.00 Down; Farm Bulls 65.00-75.00.

HOGS (557 Head) Barrows & Gilts 2.00 lower. (US No. 1-3 210-250 lbs. 45.50-45.85 over 260 lb. 43.00; 2 & 3's 44.00-45.00. Sows: Heavy 2.00 higher; Light 2.00 higher; Over 450 lb. 35.25-37.25; under 450 33.50-36.00; 2 & 3's 31.50-33.25; Boars: Heavy 28.75-31.00.

FEEDER PIGS (by the hd) (208) (25-30 lbs. 14.00-22.00); (35-50 lbs. 25.00-31.00); (55-65 lbs. 26.00-32.00).

SHEEP: Lambs (41) Choice 64.00-71.00; Medium-Good 51.00-60.00.

EWES (36) Goats: (Lg) 49.00-62.50; (hd)/Med 28.00-40.00; Small goats 12.00-20.00 Hd.



EMERY'S BUYING STATION

OPEN TO RECEIVE YOUR MARKET HOGS

AT THE GREEN DRAGON MARKET RD 4, EPHRATA, PA 17522 1 MILE NORTH OF EPHRATA ON NORTH STATE STREET.

HOURS: MONDAY, TUESDAY, and WEDNESDAY 6:00 A.M. to 11:30 A.M. 215-458-5677 Residence 717-733-9648 Office

YOU ARE PAID FOR YOUR HOGS IMMEDIATELY

Ken & Lois Emery, Proprietors

Green Dragon Livestock Sales



Location: Ephrata RD 4. 1 mile N. on North State St., Ephrata.

COWS COWS COWS SALE EVERY FRIDAY

Lots of good Northern Feeder & Stockers. Slaughter Cows - Bull Steer, Veal-lamb.

11:00 A.M.-Beef Sale 200-300 each week. 1:00 P.M.-Dairy Sale. 7:00 P.M.-Small Animal Sale.

For Special Sales and Herd Dispersals on farm or at our barn or other market information call: Office 717-733-2444, Home 717-838-4318.

WALTER H. RISSER, Proprietor

All out of state and new buyers must have cash or certified check or current letter of credit from bank.



ATTENTION FARMERS

EVERY MONDAY HATFIELD PACKING CO. and MOYER PACKING CO.

Will Receive Your Hogs and Cattle at the **DANVILLE LIVESTOCK MARKET RD 4, Danville, PA**

- We will receive your hogs from 8 AM to 12 Noon every Monday. Your hogs will be weighed and paid for immediately.
- We will also accept your sows & boars.
- Your cattle will be received from 12:30 to 5 P.M. We will either pay you for your cattle immediately or you may sell them dressed weight
- There will not be a commission or yardage fee deducted from your check.
- You may call our office Monday morning and we will be able to tell you the base price for hogs for the day

MELVIN M. LEHMAN - Owner Danville Buying Station

Phone: 717-275-2880

CRIPPLED AND DISABLED

Cows, Steers & Bulls For Slaughter Under USDA Inspection

Call Wayne Taylor

717-866-6289

215-286-9400

Lebanon, Lancaster, New Holland, Morgantown, Reading, Kutztown, to Myerstown.

FRIDAY, AUG. 2 ON THE FARM MONTHLY BRED GILT SALE

Sale to Start Promptly Every 4 Weeks at 7:30 P.M.

7:30
2 Evening Sales
Aug. 2 and Aug. 30
7:30 D.S.T.

Located 18 miles south of Lancaster, Pa., 6 miles south of Quarryville, take Rt. 272 to Little Britain, turn north, follow Little Britain Road to Jackson Road, right. 2nd farm, OR take Rt. 222, out of Quarryville to Cedar Hill Road to Little Britain Road to Jackson Road, left. Watch for sale arrows.

30 Head Due Bet. Aug. 5 & Aug. 14 30 Head Due Bet. Aug. 14 & Aug. 24 Some 2nd Litters

50 to 60 Head
Now selling our new hybrid gilts representing mostly York & Hampshire & Landrace cross. Bred for easier & less trouble over farrowing and better weight gains.

Validated Brucellosis Free Herd #169 Qualified Pseudorabies Free Herd #55

Hand mated with Breeding Dates

Local Trucker Available
No Hogs Sold On Commission

CHRIST A. BEILER R.D. 2, Quarryville, Pa JOHN B. STOLTZFUS R.D. 1, Kirkwood, Pa

Abe Diffenbach, Auctioneer AU225L
NEXT SALE DATE AUGUST 30