



Berks County DHIA Monthly Report

June, 1985

Rolling Herd Average

Owner	Brd.	No Cows	Days In Milk	Lbs Milk	Lbs Fat
Charles & Tim Kissling	3	66	7	87	0
Plushanski Farms Inc	3	129	0	87	3
Mertz Brothers	3	42	9	87	9
Bendy Brook Farm	3	45	6	86	5
Reu Hel Farms Inc	3	79	1	86	6
Stephen J Janos	3	34	4	90	5
Junge Farms	3	73	5	86	4
Heindel Farms Inc	3	32	7	88	3
Rothrock Golden Hol	B3	69	3	80	0
D J S P Schuler	3	59	2	88	1
David L Schrack	B3	103	2	88	1
Forrest C Stricker	B3	51	5	84	8
Mark A Wolfskill	3	99	7	83	6
Merlin J Grube	B3	50	3	85	9
Vista Grande Farm	3	88	3	86	3
Leonard G Stoltzfus	3	96	1	85	6
Linden Loch Holstein	3	65	5	85	7
R R Troutman & Sons	3	124	2	83	8
Arlan Krick	B3	71	1	87	3
Pinnacle View Dairy	B3	45	5	87	7
Robert E Kopfer	B3	59	6	89	7
Zahncroft Farm	3	48	9	87	8
George S Troutman Jr	B3	73	4	89	2
Raymond A Seidel	3	36	9	86	2
Good Bros	B3	61	0	88	6
George E Moyer	3	99	8	85	9
Ralph & Ken Sanner	3	82	4	85	8
Donald B Duncan	B3	1	1	89	1
Retland Farm	3	49	6	84	3
Mervin Brubaker	B3	65	9	85	7
Show Top Farms	3	161	4	91	6
Richard A Bleiler	B3	51	1	88	9
Frank G Gromlich	3	66	9	85	5
Daview Farm	3	67	1	85	9
Yost Brothers	B3	112	0	88	4
Oleka Acres	3	54	6	81	7
Clarence B Kulp	3	66	5	88	1
Red Fever Farm	B3	67	3	88	7
Andrew D Stoltzfus	3	105	1	83	4
Martin & Missy Moyer	B3	51	1	85	8
Sam Shirk	B3	51	7	85	2
Wilthomr Farm	3	43	6	87	5
Udder Valley Farm	B3	68	6	87	2

Scattered Acres Inc	B3	154	5	84	0
Grumbro Holsteins	3	43	9	85	8
Glenn B Gockley	G3	41	9	85	3
Hylark Farm	3	73	1	87	5
E Daniel Leatherman	B3	69	8	88	9
Leroy E Howard	3	141	0	90	8
Dean & Brenda Daubert	5	38	7	87	3
Whirlwind Acres	B3	104	1	90	5
Ridge Crest Farms	B3	58	2	87	1
Joe & Deb Kohler	G3	34	6	86	0
Fred J Walters	B3	68	6	87	7
Donald M Meyers	3	61	3	87	3
William G Howerter	3	90	5	87	2
Harvey C Krill Jr	B3	42	8	89	3
Ernest C Hoffman	3	56	4	88	4
Heindel Farms Inc	1	23	3	86	2
Ernest D Miller	B3	212	5	83	9
Harold Schuler	3	37	0	88	5
Herb Top Farms	B3	31	8	83	1
Marlin J Stutzman	B3	35	6	90	8
Meadow Spring Farm	B3	50	3	83	8
F Mark Weber	B8	28	2	87	7
Ken & Debra Deitrich	B3	47	0	82	0
Bernell L Burkholder	B3	43	7	84	2
David J Williams	B3	41	0	87	3
Irvin G Weaver	B3	50	2	87	6
Lester Martin	B3	44	4	82	7
Swatara Dairy Farm	3	72	0	83	6
Barry L Burkholder	B3	48	8	81	9
Ker Min Farms	3	80	2	87	8
Ray W Seidel	B3	34	6	87	0
Eleanor K Seigfried	3	101	6	89	4
Bruce Reigel	G3	37	5	86	1
Ontelynn Acres	3	120	1	87	4
Pine Brook Farm	3	100	8	87	1
Robert C Dreisbach	4	76	6	83	5
Samuel L Mast	3	46	9	86	8
Elvin Brubaker	B3	39	7	85	0
Tulpa Canal Farm	B8	37	9	84	4
Raymond B Nolt	B3	82	9	87	5
William C Adams	B3	82	7	90	0
Floyd Kurtz	3	56	4	87	1
Clarence C Sattazahn	B3	103	5	89	0
Gary Martha Heffner	B3	39	8	81	9
Rentschlers Holstein	B3	33	8	85	7
Alton Rohrbach	B3	53	4	88	0
Harold Fenstermaker	3	34	6	86	1
F M Browns Sons Inc	B3	91	5	92	6
Arthur D Schlappich	B3	61	6	85	1
Raymond L Kulp	B3	79	5	90	4
Way Har Farms	B3	111	5	88	6
Donald Burkholder	B3	101	0	86	7
David Gross	B3	36	7	81	3
Lynnacres	3	180	4	90	6
Charles D Moyer	B3	120	3	84	3
Terry Kunkel	B3	38	0	85	5
Phillip J Werley	B3	65	5	85	3
Ray E Bickler	3	47	9	86	7
Alfred E Schmidt	3	56	2	91	1
Daniel J Harnish	B3	90	5	87	4

Win-Dale Farm	4	53	1	87	8
Wilmer Dreibelbis Jr	B3	90	4	82	9
Glenn R Harnish	B3	105	1	86	7
Robert L Sattazahn	B3	101	7	89	6
Robert E Kieffer	B3	59	9	89	8
Wooden Bridge Farm	B3	59	9	80	1
David Y Knauer	B3	53	6	82	0
Charles W Wagner	B3	51	4	88	8
Harvey M Weaver	B3	52	4	84	2
Ronald Kelchner	B3	73	3	85	8
Richard W Hoppes	B3	71	3	86	8
Ernest E Heckman	G3	52	2	86	5
Blue Mtn Academy	B3	128	2	88	6
Vernon G Good	B3	34	5	89	5
Dennis Adam	B3	35	8	88	4
Kenneth Zook	B3	59	0	85	8
Teen Chal Farm	B3	124	1	87	0
Luke Snyder	B3	49	6	89	7
Ro Ria Farms	B3	207	8	90	3
Carl H Rabenold	B3	56	2	84	0
John F Snyder	B3	58	4	82	7
John H Stump	3	63	2	84	6
Edward R Haas	G3	27	4	88	7
Lewis Nolt	B8	62	8	85	2

* Indicates 3 Times A Day Milking

SULBRA COUNTY DHIA May, 1985

Records made on A.M.-P.M Alternate Method are designated by A

Rolling Herd Averages - (650 Lbs Butterfat And Over)

Richard R Higley	3	89	6	83	6
Dennis Vickie Boyd	3	32	3	86	4
Raymond Norconk	3	40	4	88	0
Bobwood Acres	3	46	8	87	8
William B Hart	3	73	1	89	0
D and D Hottenstein	3	55	2	85	7
Lambert Farms	3	125	6	89	1
Ronald Hembury	3	93	5	85	9
Joan M Woodhead	3	29	6	86	3

Completed Lactations of 750 Pounds Or More Of Butterfat

Richard R Higley	3	5	3	305	28	396	3	9	1119
Lance	3	6	11	305	25	892	4	3	1115
Dottie	3	6	11	305	25	892	4	3	1115
Ronald Hembury	3	8	3	305	20	892	4	5	943
Hungry	3	5	4	305	17	288	5	1	878
Ruth	3	4	1	305	19	928	4	3	865
Harriet	3	4	6	305	18	217	4	1	754
Bambam	3	5	3	305	21	951	3	6	786
Adeline	3	4	10	305	25	712	3	5	892
Earl & James Warburton	3	7	0	284	16	422	4	7	68
Evon	3	6	3	305	19	946	3	8	752
Randy Heess	3	7	2	305	19	730	3	8	751
RL & Tracy McCarty	3	7	2	305	19	730	3	8	751
South	3	7	2	305	19	730	3	8	751
Lambert Farms	3	7	2	305	19	730	3	8	751
Rocket	3	7	2	305	19	730	3	8	751

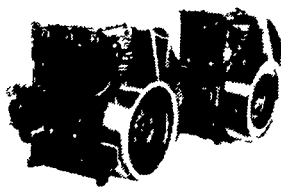
SMUCKER'S SALES & SERVICE, INC.

RD #2, BOX 21
NEW HOLLAND, PA 17557



12-36 bhp

TS2/TS3 AIR COOLED DIESELS



**FOR PROMPT SERVICE CALL
717-354-4158 OR IF NO ANSWER
CALL 717-354-4374**

KING Construction Co.

DESIGNERS & BUILDERS OF ALL
TYPES OF FARM & COMMERCIAL
BUILDINGS



WE SPECIALIZE IN
HORSE BARNS & POULTRY BUILDINGS

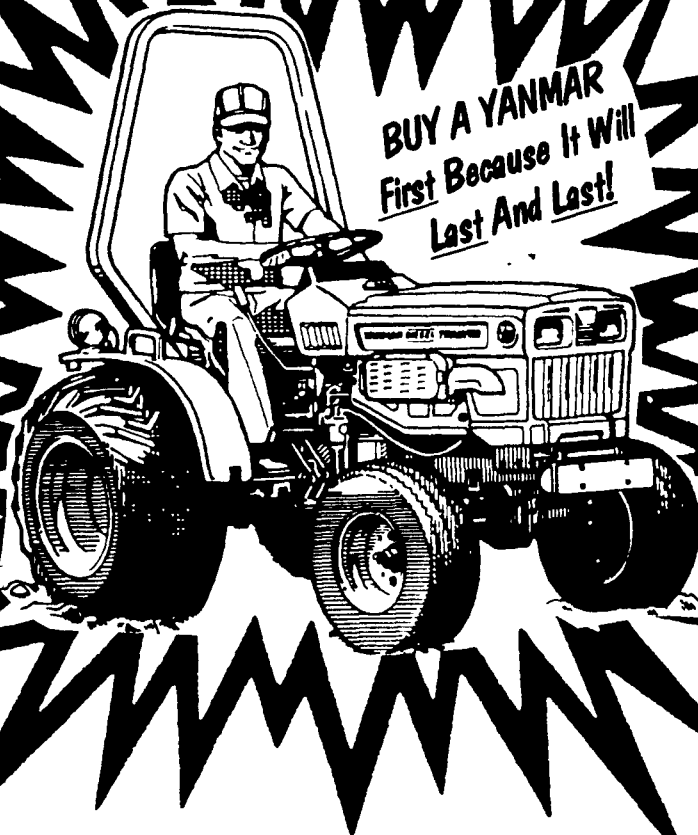
King Construction Co.

Box 166, RD#2
New Holland, PA 17557
(717) 354-4740



YANMAR TRACTORS OUT PERFORMS THEM ALL!

*BUY A YANMAR
First Because It Will
Last And Last!*



**Come In And Choose From A Selection
Of 14 To 33 HP Tractors, 2 or 4 WD, Ag or Turf**

"A Little Out Of
The Way...
But A Lot Less
To Pay"

**"SERVICE IS OUR MOTTO"
LAWN CARE OF PA.
Sales & Service**
1 Mi. North of Martinsdale on Grist Mill Rd. Martinsdale, PA 17840
(215) 445-4541

HOURS:
Mon., Thurs., Fri.
8 AM-8 PM
Tues. & Wed.
8 AM-5:30 PM
Sat. 8 AM-2 PM