

Angus Breeders Show sees record participation

Genetics Unlimited wins bull, heifer titles

BY SALLY DUNMIRE  
Staff Correspondent

**CENTRE HALL** — Top honors were captured by Genetics Unlimited at the 3rd annual 1985 Pennsylvania Angus Breeders Show. Their summer yearling, Primrose Charm 7584, the July '84 daughter of Greenbrae Chairman and Stewarts Primrose 648M, bred by Premier Angus, Inc., took the winner's circle as the grand champion heifer.

According to Greg Krueger, part-owner of Genetics Unlimited, Inc., Primrose Charm will next be competing at the All-America Futurity Angus Show, to be held in Louisville, Ky., this August.

Krueger and his partner, Dr. James Evans, run 20 head of purebred Angus cows on Riverside Farms in West Grove, Pa. They feature an embryo transfer operation.

The distinction of reserve grand champion heifer went to R & J Lucy 184, a February '84 female out of R & J Austin 13 and R & J Lucy 62, and bred by R & J Ranch. The proud owners were Gh2 Angus Associates, York, Pa.

In the junior show heifer division, Cathy Shive of Seven Valleys, Pa. ably showed her April '84 bred-and-owned heifer, BV Elba 416, out of Pine Drive Big Sky and Rally Elba 330, to win both the junior show champion heifer and the bred and owned junior champion heifer prizes.

Winning is nothing new to Cathy. At the Eastern Regional Junior Angus Show held earlier this month in York. Cathy won grand champion bred and owned heifer, with a different animal. Her parents tend 30 brood cows at their Seven Valley's farm.

The junior show reserve champion heifer award was presented to Debra A. Krause, of Slatington, Pa., with her bred-and-owned June '84 female, DSK Grand Erica 784, a daughter of Fairfield Hi Guy and DSK Grand Erica 281.

Reserve bred-and-owned junior champion heifer honors went to Tim Kinsley, York, Pa., with South Branch Ms. Burgess 426. This April '84 heifer's sire is Pine Drive Big Sky. The dam is SBF Burgess 137.

Genetics Unlimited, this time with Stewart & Son, once more was in the limelight, in the bull show. Their handsome January '84 bull, Genetics Proton, was chosen grand champion. This well-musclcd Angus is out of Progression and HF Blackbird 99, and bred by Stewart and Son. His owners will next enter him in the All-American Futurity.

The reserve grand champion bull title was won by Dutchman, a strong-looking April '83 male owned by Huntingdon & Northcote Farms, Alexandria, Pa., and bred by Huntingdon Farm. His sire is also the well-known Pine Drive Big Sky. The dam is Stampede Duchess 833.

Moving on to the steer classes, JR/Bold Image owned by Nicole High, Lititz, Pa., netted the grand champion steer honor. This 975 pound April '84 steer was sired by JR Bold Image. Dam was Waltz Miss Blackcap Erica, bred by Walter C. Zimmerer, Jr.

The reserve grand champion steer was K.W. Nighthawk, a 1,010-pound May '84 Angus, owned and bred by Kenneth W. Walker, West Chester, Pa. This steer was also a Pine Drive son, with LA Starlet PM 61 as dam.

This year's event was held on July 13 and 14 at the spacious Centre Hall Fairgrounds. Judge Pat Scheer, of Sharon, Conn., stated that he was "impressed by the quality in all of the classes."

According to Chester Hughes, Secretary of the Pa. Angus Association, "this was the biggest show yet, out of three years. A total of 117 exhibitors were pre-registered and 109 head showed up; a strong show." One reminder, from Chet. "When you buy calves this fall, remember to purchase registered Angus. Beginning in 1986,

3RD PENNSYLVANIA ANGUS BREEDERS SHOW 1985



Genetics Proton, a Progression son, was the Angus Breeders Show's top bull. He is owned by Genetics Unlimited and Stewart and Sons of West Grove.

3RD PENNSYLVANIA ANGUS BREEDERS SHOW 1985



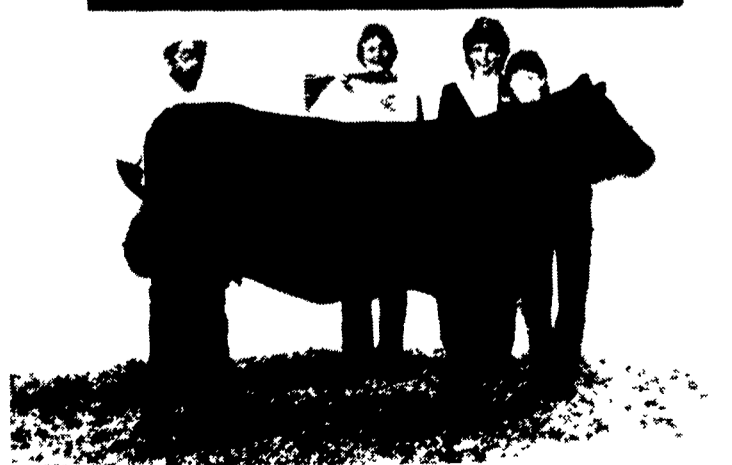
Grand champion female at the Angus Breeders Show was this Greenbrae Chairman daughter, Primrose Charm 7584, owned by Genetics Unlimited, Riverside Farm and Ten Angus of West Grove.

3RD PENNSYLVANIA ANGUS BREEDERS SHOW 1985



In steer competition, Nichole High of Lititz emerged victorious with a JR Bold Image son.

3RD PENNSYLVANIA ANGUS BREEDERS SHOW 1985



Cathy Shive's BV Elba 416 was champion of the junior heifer show.

the Breeders Show will only accept registered purebred animals."

- Bull Classes**  
**Class 1**  
 1 Herr Angus Farm Pa  
**Class 2**  
 1 Genetics Unlimited Inc Pa 2 Huntingdon Farms Pa Bull Calf Champion Genetics Unlimited Inc Pa Reserve Bull Calf Huntingdon Farm Pa  
**Class 3**  
 1 Walt Zimmerer NJ 2 Lee E Miller MD  
**Class 4**  
 1 Herr Angus Farm Barbara and David Eckerdt Speed Limit Associates Pa 2 Rocky Forge Farm MD Intermediate Champion Bull Walt Zimmerer NJ  
**Class 5**  
 1 Genetics Unlimited and Stewart & Son Pa 2 Erdenheim Farm Pa 3 Erdenheim Farm Pa Junior Champion Bull Genetics Unlimited Inc Pa Reserve Junior Champion Herr Angus Farm Barbara & David Eckerdt Speed Limit Associates Pa  
**Class 6**  
 1 Walt Zimmerer NJ 2 Rocky Forge Farm MD  
**Class 7**  
 1 Lee E Miller Sid Trump Rishel's Edlyn Angus Md 2 Dale B Fisher Pa 3 Erdenheim Farm Pa  
**Class 8**  
 1 Huntingdon & Northcote Farms Pa Senior Champion Bull Huntingdon & Northcote Farms Pa Reserve Senior Champion Walt Zimmerer NJ  
**Grand Champion Bull**  
 Genetics Unlimited & Stewart and Son Pa  
**Reserve Champion Bull**  
 Huntingdon & Northcote Farms Pa  
**Steer Classes**  
**Class 1**  
 1 Jennifer Calderazzo Pa 2 Kristin Chupp Pa 3 Tiffany Carroll Pa  
**Class 2**  
 1 Kenneth W Walker Pa 2 Susan Eisenhour Pa 3 Michael Crosson Pa  
**Class 3**  
 1 John Crosson Pa 2 Elizabeth Bishard Pa 3 Christine Shive Pa  
**Class 4**  
 1 Leigh Ann Templeton Pa 2 Cathy Shive Pa 3 Sandra Eisenhour Pa  
**Class 5**  
 1 Nicole High Pa 2 Paige Templeton Pa 3 Tracey Landis Pa

3RD PENNSYLVANIA ANGUS BREEDERS SHOW 1985



GH2 Angus Associates, York, campaigned the show's number-two female, R&J Lucy 184.

- Grand Champion Steer**  
 Nicole High Pa  
**Reserve Champion Steer**  
 Kenneth W Walker Pa  
**Female Classes**  
**Open Owned Heifers**  
**Class 1**  
 1 Walt Zimmerer NJ 2 Erer Hill Farms Pa  
**Class 2**  
 1 Genetics Unlimited Inc Pa 2 Huntingdon Farms Pa 3 Matthew McClellan Pa  
**Class 3**  
 1 Genetics Unlimited Inc Pa 2 Debra Krause Pa 3 Gh2 Angus Associates Pa  
**Class 4**  
 1 Debra Krause Pa 2 James Eisenhour Pa 3 Eric Ligo Pa  
**Class 5**  
 1 Gh2 Angus Associate Pa 2 David Bell DE 3 Chris Jordan Pa  
**Class 6**  
 1 Huntingdon Farm Pa 2 Erdenheim Farm Pa 3 Carolyn Zyo Pa  
**Class 7**  
 1 Cathy Shive Pa 2 Mary White MD 3 Fritz Frey Pa  
**Class 8**  
 1 Dale Rains Pa 2 Tim Kinsley Pa 3 Brian Hoerner Pa  
**Class 9**  
 1 Chester Hughes Pa 2 David & Barbara Eckerdt Pa 3 Stonylonesome Farm Pa  
**Class 10**  
 1 Donald Cairns Pa 2 Rocky Forge Farm MD 3 Erica McClellan Pa  
**Class 11**  
 1 Susan Eisenhour Pa 2 Lee Miller MD 3 Chris Kinsley Pa

(Turn to Page A27)