

## Public Auction Register

Closing Date Monday, 5:00 P.M.  
of each week's publication

TUES. SEPT. 2 - 9AM  
Antiques & Collectables.  
Farmersville Auction in  
Farmersville, 3 mis. E. of  
Brownstown, Lanc Co.,  
PA.

TUES. SEPT. 3 - 6PM  
Delaware's 7th Per-  
formance Tested Boar  
Sale. Located: Delaware  
State Fairgrounds in  
Harrington, DE. For more  
info, contact: Richard  
Barczewski 302-736-  
1448.

FRI. SEPT. 6 - 7 PM  
Holstein Promotion. New

Holland Sales Stables,  
Inc., Auctioneers.

FRI. SEPT. 6 - 9AM Fall  
Consignment Sale of Farm  
Mach. at the Belleville  
Livestock Mkt. 717-935-  
2146. Glick, Gibboney,  
Gilligan, Auctioneers.

SAT. SEPT. 7 - 10AM  
Public Auction of Estate of  
Lydia A. Reed. Real  
Estate, Antiques & Coll.,  
Hshld., Farm Mach.  
Located S. of Trevorton,  
PA, 1/4 mi. N. of the Village  
of Hunter Station & Rt.  
225. Dockey, Dockey, &

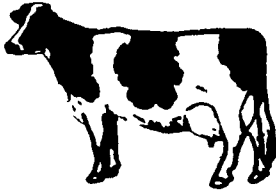
Deppen, Aucts

SAT. SEPT. 7 - Large  
Liquidation Auction in  
Binghamton area  
Goodrich Auction Service,  
Inc. 607-642-8688.

MON. SEPT. 9 - Lawn Eq  
& Tools Located in  
Farmersville For Far-  
mersville Eq. Co. Paul E.  
Martin & John D. Stauffer,  
Aucts.

WED. SEPT. 11 - 6PM,  
Gun Auction, Shotguns,  
Rifles, Handguns, misc.  
Located: Shamokin Dam,  
Pa. 1 mi. north of Rtes. 11  
& 15, turn onto 11th St. at  
Phillips Motel. Dorothy L.  
Miller, owner. Lee Dockey,  
Auct.

THURS. & FRI. SEPT. 12  
& 13 - Farm Eq. Sale at  
Horst's Machinery Lot at  
Marion, PA. Ralph W  
Horst, Manager.



### NEW HOLLAND SALES STABLES, INC.

12 Miles East of Lancaster, Pa. just off Rt. 23, New Holland, Pa.

### DAIRY SALE CONSIGNMENTS

For

WEDNESDAY, JULY 24, 1985

- \* 1 Load Purebred and Grade Canadian Cows, Fresh and Springers, consigned by Roy Johncox.
- \* 1 Load Purebred and Grade Canadian Cows, Fresh and Springers, consigned by Bryan Dawson.
- \* 1 Load Fresh and Springer Cows consigned by Norman and David Kolb.
- \* 1 Load Fresh and Springer Cows consigned by Raymond Smucker.
- \* 1 Load Fresh and Springer Cows consigned by H.D. Matz.
- \* 1 Load Fresh and Springer Cows consigned by Merle Breneman.
- \* 1 Load Fresh and Springer Cows consigned by Marvin Eshleman.
- \* 1 Load Fresh Cows consigned by Alfred Albright.

## Dairy and Livestock Sales

# SONAJ FARMS COMPLETE DISPERSAL

Stephen J. Janos - Mohrsville, PA  
**FRIDAY, JULY 26, 1985 - 11:00 A.M.**  
**65 HEAD REGISTERED HOLSTEINS**  
Well Known As One of Berks  
Counties Top Herds for Type and Production  
RHA 20,271 3.7 749  
Progressive Breeders Registry Herd 1984-1985



Featuring  
Full Sisters By Elevation



- Ventessa VG-87  
32 359 26 040 4 2 1091  
Working on another 1000 lbs  
fat record now and due in Sept
- Full sister Victoria VG-86  
1 11 305 22,360 3 3 746  
Ave 100 lbs per day at 3 yr 2 mo
- Their Dam VG-88  
By Bootmaker 27 990 3 5 980

Also Selling From This Family  
• A Fancy Yearling  
Maternal sister to the Elevations  
by Triple Threat  
• 2 Daughters of a VG-88  
27 588M Jetstream, maternal sister  
to the Elevations  
One has 20,000 at 2 yrs and sells  
with 2 daus  
The other by Elevation is milking well  
as a 2 yr old and sells bred back to Spirit

Others to Watch For

- A VG 2 yr. old Valiant from 804 lb. F  
Elevation bred to Ned Boy

- Another 2 yr. old Valiant with 17,700  
and 230F at 2 yr. 1 mo., from a 23,400  
Astronaut dam and an Elevation granddam

DIRECTIONS: Located at the farm, 8 miles North of Reading, just west of Rt. 61, turn left on Bellman Church Rd., (just after Leesport), then right onto Centerport Rd., 1st farm on right. Watch for sale arrows.

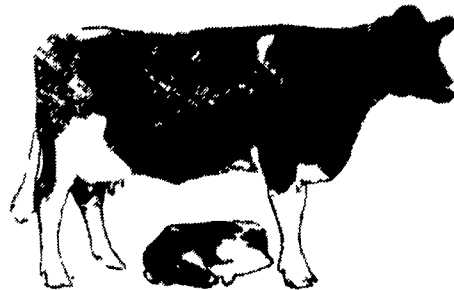
Pennsylvania Holstein  
Association  
Sale Managers  
839 Benner Pike  
State College, PA 16801  
814-234-0364

Co-Managed

BACKUS ASSOCIATES, INC  
P.O. Box 424  
Elizabethtown, Pa 17022  
717-367-9236  
315-963-7231

AU-000034-L

## 123 HEAD OF REGISTERED AND GRADE HOLSTEIN



Friday Evening 7:30 P.M.  
July 26, 1985

at Shady Lane Dairy Sales, Inc.  
1/4 mile West of Quarryville, Pa.  
off Rt. 372 on Oak Bottom Rd.

Complete Dispersal of Steven Sirota  
heifers from calves to springing herd  
dispersed by us in April had a official  
DHIA of 305 16,700 3.8 631.

**Sires Represented** - Chairman,  
Starmate, Persuader, Bell, Fond  
Apollo, Marlo Basic, Enchantment,  
Sky High, Conductor, Jet Stream,  
Chief Elmer.

**Service Sires Include** - Carlin M,  
Ivanhoe Bell, Cor Vel Enchantment,  
Incredible & Marsh Field Elevation  
Tony.

This is an excellent opportunity to buy  
from a Complete Heifer Dispersal  
with many dams scored Excellent or  
Very Good & records to 26,458 of  
milk and 900 of fat.

**Also Available On This Sale** - 20 top  
registered investment quality  
animals purchased from the original  
Sirota herd, and now being offered by  
dissolving syndicate on this sale only.  
Many scored Excellent or Very Good.

**From Top Sires Including** - Ivanhoe  
Star, Arlinda Successor, Very, Glen  
Valley, Star, Marquis King, R. Maple,  
Conductor & Gemini.

**ALSO** - Complete Herd Dispersal of 46  
Md. Cows. Over 1/2 of herd recently  
fresh or springing. All home raised.  
Selling due to health reasons.

Sale Managed By

## Shady Lane Dairy Sales, Inc.

R.D. 4 Box 463  
Quarryville, PA 17566

OWNERS

GLENN D. FITE  
717-786-2750

DAVID L. FITE  
717-786-1725

"Six Generations of Sales & Service"