

THE OLD FARMER'S ALMANAC

JULY 15-21, 1985

A farmer's simple life, how pure the joy it yields.

Time to prune hooped tomatoes John Paul Jones, age 45, died in Paris, July 18, 1792 Average length of days for the week, 14 hours, 54 minutes First atomic bomb detonated at Alamogordo, N.M., July 16, 1945 New moon July 17 (Wed) Neil Armstrong of the Apollo 11 crew became first man to walk on the moon, July 20, 1969 A bee draws honey from bitter herbs



Ask the Old Farmer: I guess it is traditional the country over to milk a cow from the righthand side (of the cow, that is) But why? J.P., Egypt Mills, Mo The custom dates back into antiquity It is claimed that cows used to be rigged like goats, with only two spigots The right hand served best for milking Even today, after additional spigots have been added, the largest and fullest stand at the righthand of the milker, as he sits Home Hints: Before scalding milk, rinse pan with cold water shake out excess water but do not dry

OLD FARMER'S WEATHER FORECAST

New England: Week begins cloudy and cool, some showers, midweek sunny and hot, end of week cool
Greater New York-New Jersey Cool with thundershowers at week's beginning, midweek hot and humid, week ends with thunderstorms
Middle Atlantic Coastal Week begins with showers, sunny and hot by midweek, end of week brings heavy storm north, sunny and hot south
(All Rights Reserved Yankee Publishing Incorporated Dublin NH 03444)

Central U.S. Carlot

Beef Report

Wednesday, July 10

Report supplied by USDA

Compared to Tuesday's 4:00 P.M. report, Steer and Heifer Carcasses steady, except some weakness on Good and Firmness on YG 4. Demand and trading light to moderate on moderate supplies. The Gross Boxed Beef Carcass cutout value advanced \$.11 to an estimated \$93.99 per cwt, 191 loads boxed cuts reported.

Sales reported on 94 loads of Steer and Heifer Carcasses.

Steer Beef

46 Loads
FOB Omaha Basis
Choice 3 600-900 lbs. 86.00, steady; 600-700 lbs. 86.00.
Choice 2 600-700 lbs. 87.00-88.00, mostly 87.00.
Good 2-3 600-900 lbs. 78.50-79.50, mostly 79.50, steady to weak.
Good 2 & Low 3 600-700 lbs. 79.00-81.50, mostly 81.00.

Heifer Beef

48 Loads
FOB Omaha Basis
Choice 3 550-700 lbs. 86.00, steady; 500-550 lbs. 84.00-85.00, no comparison; 400-500 lbs. 82.00-83.00, no comparison.
Choice 2 600-700 lbs. 86.50-87.00.
Choice 4 500-700 lbs. 69.00, firm.
Good 2-3 550-700 lbs. 76.00-77.00, steady to weak.
Good 2 & Low 3 600-700 lbs. 78.00.

Steer and Heifer Primal Cuts

16 Loads
FOB Omaha Basis
Choice 3: Hinds (H) 120-170 lbs. 106.00-107.00; Fores 130-210 lbs. 68.00-69.25.

Cow Beef

29 Loads
Midwest: Utility steady to \$.50 higher.
Eastern Texas and Oklahoma:

Prices steady to \$1.00 higher with most sales for next week delivery. Demand moderate with packers firm on limited supplies.

Sales In The Midwest Production Area

FOB Omaha Basis
Bng Utility 1-3 400/up lbs. 67.00-67.50.

Sales In Eastern Texas And Oklahoma

Production Areas
Brk Utility 2-3 450/up lbs. FOB Plant 64.00.
Bng Utility 1-3 400/up lbs. FOB Plant 67.50-69.00; Delivered Plant 69.50-70.50.
Cutter 1-2 350/up lbs. FOB Plant 76.00-77.00; Delivered Plant 77.00-78.00.

Boneless Processing Beef/ Beef Trimmings

173 Loads
FOB Omaha Basis
90% Chem Lean, Fresh 105.00-106.00, mostly 105.50.
75% Chem Lean, Fresh 75.00-76.00.
75% Chem Lean, Frozen 73.00-TIS.
50% Chem Lean, Fresh 37.00-38.00, Bulk 37.00.
50% Chem Lean, Frozen 39.00.

Eastern Texas and Oklahoma

Production Areas
FOB Plant
90% Chem Lean, Fresh 105.00-106.00, mostly 106.00.
90% Chem Lean, Frozen 106.00.
85% Chem Lean, Fresh 100.00.
75% Chem Lean, Fresh 75.00.
65% Chem Lean, Fresh 61.00.
50% Chem Lean, Fresh 37.00-38.00.

Eighty-Four Livestock

Eighty-Four, Pa.

Monday, July 8

Report supplied by PDA

CATTLE 282. COMPARED WITH LAST MONDAY'S MARKET, SLAUGHTER COWS FULLY STEADY. UTILITY AND

COMMERCIAL 25 cents TO 50 cents HIGHER. Few Good slaughter steers 50.00-52, Standard 46-49.50, few Utility 43.50-46. Few Good slaughter heifers 47.50-51, Standard 44-47.50, Utility 40.00-43. Breaking Utility & Commercial slaughter cows 39-42.50, Couple 43.75-44.50, Cutter & Boning Utility 37.00-40, Canner & Low Cutter 32-37.25, Shells down to 22. Yield Grade No. 1 1000-1800 lbs. slaughter bulls 46.50-54.50, #2 850-1450 lbs. 42.00-47. FEEDER CATTLE: Medium Frame #1 400-800 lbs. steers 50.00-58, few to 60.00. Medium Frame #1 400-670 lbs. bulls 48.00-55.00.

CALVES 250. Vealers grading Good and Choice \$3-\$5 lower, Standard and Good steady. Few Choice vealers 74.00-80, Good 60.00-74, Standard & Good 90-120 lbs. 52.00-63, 60-85 lbs. 43.00-53, few Utility 50-90 lbs. 35.00-39. FARM CALVES: Holstein Bulls 90-125 lbs. 70.00-100.00.

HOGS 124 BARROWS AND GILTS 25 CENTS HIGHER. One Lot US No. 1-2 236 lbs. barrows and gilts 48.50, No. 2-3 225-260 lbs. 47.25-48, No. 2-4 230-300 lbs. 45.50-47, one lot 1-3 180 lbs. at 40. US No. 1-3 325-550 lbs. sows 40-43.50, few No. 2-3 4-600 lbs. 38.00-40. Few Boars 28.00-32.00.

FEEDER PIGS 9. Few US No. 1-3 15-24 lbs. feeder pigs 13.00-18 per head, few 30 lbs. at 28.00 per head. SHEEP 162. SPRING

SLAUGHTER LAMBS \$8 TO \$12 HIGHER. High Choice & Prime 74-96 lbs. spring lambs 75.00-86, Choice 70-95 lbs. 68.00-76, few Good and Choice 55-65 lbs. 50.00-62. Slaughter sheep 16.00-22.00. GOATS 21: 12.00-35.00 per head.

110.00, steady; 17-22 lbs. 106.00, firm; 22/up lbs. 82.50 late Tuesday. BOSTON BUTTS: 4-8 lbs. 84.00, firm.

SPARERIBS: 5.5&up lbs. 73.00 frozen.

HAMS SKINNED: 14-17 lbs. 61.00, weak; 17-20 lbs. 61.00-62.00, steady/Monday.

BELLIES (Sdls - Skin On): 14-16 lbs. 44.00, firm; 20-25 lbs. 46.00, steady.

Pork Trimmings

Boneless Processing Pork (Chemical Lean)
42% Lean Trimmings, Fresh 34.50-36.00, generally steady.
72% Lean Trimmings, Fresh 70.00.

72% Boneless Picnics, Fresh 72.00.

Smoke and Cured Meats

SMOKED HAMS (Water Added): 16-20 lbs. 65.00-75.50; 19-26 lbs. 64.00-74.50.

PICNICS: 4-7 lbs. 57.00-60.00. BACON NO. 1: 1 Lb. Pack 118.00-169.00.

Central U.S. Carlot

Pork Report

Wednesday, July 10

Report supplied by USDA

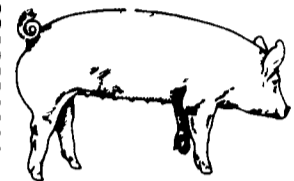
Fresh Pork Loins steady to firm in a limited test. Skinned Hams steady to weak. Sdls Bellies steady to firm. Trade slow, demand and offerings light to moderate.

U.S. No. 2 175 lb. Pork Carcass cutout value declined \$.08 to an est. \$65.63 per cwt.

Sales reported on 13 loads of Fresh Pork Cuts, and 5 loads of Trimmings and Boneless Processing Pork.

Fresh Pork Cuts

LOINS (Regular) 14-17 lbs.



EMERY'S BUYING STATION

OPEN TO RECEIVE YOUR MARKET HOGS

AT THE GREEN DRAGON MARKET
RD 4, EPHRATA, PA 17522
1 MILE NORTH OF EPHRATA
ON NORTH STATE STREET.

HOURS: MONDAY, TUESDAY, and WEDNESDAY 6:00 A.M. to 11:30 A.M.
215-458-5677 Residence
717-733-9648 Office

YOU ARE PAID FOR YOUR HOGS IMMEDIATELY

Ken & Lois Emery, Proprietors

Green Dragon Livestock Sales



Location: Ephrata RD 4. 1 mile N. on North State St., Ephrata.

COWS COWS COWS SALE EVERY FRIDAY

Lots of good Northern Feeder & Stockers. Slaughter Cows - Bull Steer, Veal-lamb.

11:00 A.M.-Beef Sale 200-300 each week.
1:00 P.M.-Dairy Sale.
7:00 P.M.-Small Animal Sale.

For Special Sales and Herd Dispersals on farm or at our barn or other market information call: Office 717-733-2444, Home 717-838-4318.

WALTER H. RISSER, Proprietor

All out of state and new buyers must have cash or certified check or current letter of credit from bank.



ATTENTION FARMERS

EVERY MONDAY
HATFIELD PACKING CO. and
MOYER PACKING CO.

Will Receive Your Hogs and Cattle at the
DANVILLE LIVESTOCK MARKET
RD 4, Danville, PA

- We will receive your hogs from 8 AM to 12 Noon every Monday. Your hogs will be weighed and paid for immediately.
- We will also accept your sows & boars.
- Your cattle will be received from 12:30 to 5 P.M. We will either pay you for your cattle immediately or you may sell them dressed weight.
- There will not be a commission or yardage fee deducted from your check.
- You may call our office Monday morning and we will be able to tell you the base price for hogs for the day.

MELVIN M. LEHMAN - Owner
Danville Buying Station
Phone: 717-275-2880

CRIPPLED AND DISABLED

Cows, Steers & Bulls
For Slaughter Under
USDA Inspection

Call Wayne Taylor
717-866-6289
215-286-9400

Lebanon, Lancaster, New Holland,
Morgantown, Reading, Kutztown, to
Myerstown.

FRIDAY, AUG. 2 ON THE FARM MONTHLY BRED GILT SALE

Sale to Start Promptly Every 4 Weeks at 7:30 P.M.

7:30
4 Evening Sales
June 7 July 5 Aug. 2 Aug. 30
7:30 D.S.T.

Located 18 miles south of Lancaster, Pa., 6 miles south of Quarryville, take Rt. 272 to Little Britain, turn north, follow Little Britain Road to Jackson Road, right. 2nd farm, OR take Rt. 222, out of Quarryville to Cedar Hill Road to Little Britain Road to Jackson Road, left. Watch for sale arrows.

50 to 60 Head
Now selling our new hybrid gilts representing mostly York & Hampshire & Landrace cross. Bred for easier & less trouble over farrowing and better weight gains.

Validated Brucellosis Free Herd #169
Qualified Pseudorabies Free Herd #55

Hand mated with Breeding Dates

Local Trucker Available
No Hogs Sold On Commission

CHRIST A. BEILER
R.D. 2, Quarryville, Pa
JOHN B. STOLTZFUS
R.D. 1, Kirkwood, Pa

Abe Diffenbach, Auctioneer AU225L
NEXT SALE DATE AUGUST 30