

Livestock market and auction news

Keister's Livestock Middleburg, Pa. Tuesday, July 9

Report supplied by PDA
CATTLE 318: Compared with last Tuesday's market, slaughter steers grading Choice 3-4 higher. Slaughter cows \$1.00 to mostly 2.75 higher. Choice slaughter steers 970-1400 lbs. 52.00-56.00, Couple 56.75, Few down to 50.00, High Good & Low Choice 50.00-51.50, Choice Holsteins 46.75-50.00, Good 45.75-47.25. Few Choice slaughter heifers 48.00-54.50, few Good 44.50-51.50. Breaking Utility & Commercial slaughter cows 38.75-41.50, Few to 45.25, Cutter & Boning Utility 37.75-40.50, Canner & Low Cutter 33.75-37.75, Shells down to 31.00. Individual Choice slaughter bullock at 54.50. Yield Grade No. 1 1225-1825 lbs. slaughter bulls, 46.00-52.60.

FEEDER CATTLE: Steers Medium Frame #1, 350-825 lbs. 50.00-59.50.

CALVES 195: Few Choice 73.00-90.00, Couple 300 lbs. at 55.00, Good 62.00-75.00, Standard & Good 75-110 lbs. 54.00-58.00, Few Utility 60-85 lbs. 45.00-54.00.

FARM CALVES: Holstein bulls 90-130 lbs. 65.00-89.00, mostly 70.00-83.00, Few Holstein Heifers 90-110 lbs. 58.00-62.00.

HOGS 481: Barrows & gilts about steady. US No. 1-2 220 lbs. 52.00-52.50, US No. 1-2 215-235 lbs. barrows & gilts 51.00-52.00, No. 2-3 190-250 lbs. 49.00-51.00, No. 2-4 200-270 lbs. 47.50-49.00. Sows: US No. 1-3 285-375 lbs. sows 37.50-40.00, few

to 46.00, 450-650 lbs. 33.00-37.50, No. 2-3 300-600 lbs. 32.00-35.00. Boars 31.00-35.00.

FEEDER PIGS 344: US No. 1-3 20-35 lbs. feeder pigs 24.00-36.00 per head, No. 1-3 35-50 lbs. 34.50-43.50, No. 1-3 one lot 65 lbs. 50.50 per head.

SHEEP 23: Few Choice 85-110 lbs. Spring Slaughter Lambs 58.00-64.00, Few Good 60-75 lbs. 51.00-56.00. Few Slaughter Ewes 10.00-23.00. **GOATS 14:** Few Large 20.00-53.00 per head, Few Kids 15.00-22.00 per head.

Oklahoma City Feeder

Thursday, July 11

Report supplied by USDA

Estimated Receipts: 500
 Same Day Last Week: Holiday
 Feeder Steer and Heifer trends not tested in weekly clean-up trade. Limited test on Slaughter Cows steady to strong with weeks upturn. Bulls absent. Total auction sales 215 head including 13 cows.

FEEDER STEERS: Medium and Large Frame 1 400-500 lb. 72.50-79.00; 500-600 lb. 66.60-73.75; 600-700 lb. 63.60-67.00; 700-800 lb. 61.10-64.50; 800-900 lb. 59.00-62.95.

FEEDER HEIFERS: Medium and Large Frame 1 400-500 lb. 59.60-62.70; 500-600 lb. 57.60-61.20; 600-700 lb. 56.90-59.00; 700-800 lb. 56.00-57.90.

SLAUGHTER COWS: Late sales - Breaking Utility 2-4 36.05-38.50. Boning Utility 1-2 36.20-39.80. Cutter 1-2 36.40-39.00. Canner and Lo Dressing Cutter 34.10-36.00.

SLAUGHTER BULLS: Y.G. 1 1500-2050 lb. 45.00-52.00; 1100-1500 lb. 44.00-51.00.

Receipts this week near 12,600, last week 7,067; last year 23,121. Feeder Steers and Heifers comprised 90% of run. Balance was Cows and Bulls.

FEEDER STEERS: Medium and Large Frame 1 400-500 lb. 72.50-79.00; 500-600 lb. 66.60-73.75; 600-700 lb. 63.60-67.00; 700-800 lb. 61.10-64.50; 800-900 lb. 59.00-62.95.

FEEDER HEIFERS: Medium and Large Frame 1 400-500 lb. 59.60-62.70; 500-600 lb. 57.60-61.20; 600-700 lb. 56.90-59.00; 700-800 lb. 56.00-57.90.

SLAUGHTER COWS: Late sales - Breaking Utility 2-4 36.05-38.50. Boning Utility 1-2 36.20-39.80. Cutter 1-2 36.40-39.00. Canner and Lo Dressing Cutter 34.10-36.00.

SLAUGHTER BULLS: Y.G. 1 1500-2050 lb. 45.00-52.00; 1100-1500 lb. 44.00-51.00.

Receipts this week near 12,600, last week 7,067; last year 23,121. Feeder Steers and Heifers comprised 90% of run. Balance was Cows and Bulls.

Dewart Livestock Dewart, Pa. Monday, July 8

Report Supplied by PDA

CATTLE 230. COMPARED WITH LAST MONDAY'S MARKET, SLAUGHTER STEERS STEADY TO 50 CENTS HIGHER: COWS 75 CENTS TO \$2 LOWER. Choice 975-1525 lbs. slaughter steers 52.75-54.75, couple to 56.00, few Good 45.50-51.50, few Good holsteins 45.10-46.85, few Standard 43-45.75. Few Choice slaughter heifers 49.00-51, few Good 45.00-50. Breaking Utility and Commercial slaughter cows 37.50-40.50, couple to 43.00, Cutter & Boning Utility 36.00-39, Canner and Low Cutter 32.75-35.75, Shells down to 30. Yield Grade No. 1 900-1675 lbs. slaughter bulls 48-53.75. **FEEDER CATTLE:** Few Medium 350-730 lbs. steers 56.00-63.25.

CALVES 241. Choice vealers 75.00-86, Good 65.00-77, few Standard and Good 110-130 lbs. 60.00-63, 70-100 lbs. 53.00-60, few Utility 50-75 lbs. 40.00-50. **FARM CALVES:** Holstein Bulls 90-130 lbs. 70.00-93, few down to 65.00, few Holstein Heifers 90-110 lbs. 57.00-64.00.

HOGS 60. BARROWS AND GILTS \$1 HIGHER. US No. 2-3 (few lots) 215-230 lbs. barrows and gilts 49.50-49.80, few lots No. 2-3 230-265 lbs. 46.85-47.70, one lot 1-3 187 lbs. at 42.75. US No. 1-3 3-570 lbs. sows 34.75-38. Few Boars 30-31.75.

FEEDER PIGS 97. US No. 1-3 15-20 lbs. feeder pigs 19-20.50 per head, 35-50 lbs. 30-39.50, lot 75 lbs. at 46.50 per head.

SHEEP 27. Choice 65-110 lbs. spring slaughter lambs 51.00-60, few Good 60-70 lbs. 48.00-50.00.

Morrison Cove Livestock

Martinsburg, Pa.
Monday, July 8

Report supplied by auction

CATTLE 212. Choice 52.50-56.75, High Good & Low Ch. 50.10-51.75, Good 46.25-49.00, Good & Choice holsteins 48.75-51.00, Standard 45.25-48.00, Utility 40.25-44.75. Choice sl. heifers 54.25-57.00, Good 51.00-54.00, Standard 46.00-49.00, Utility 40.75-44.75. Breaking Ut. & Commercial sl. cows 40.50-43.50.

Cutter & Boning Ut. 36.25-39.25, Canner & Low Cutter 31.75-35.50, Shells down to 24.00. Choice sl. bullocks 51.00-52.25, Good 46.25-49.00, Standard 42.50-45.25, Utility 40.25-41.75.

FEEDER CATTLE: Good 54.00-64.00; Standard 43.50-51.50; Heifers Good 48.00-56.00; Standard 40.00-47.00; Bulls Good 51.00-56.00; Standard 44.00-49.00.

CALVES 406. Choice 76.00-88.00, Good 68.00-75.00, Standard 59.50-66.00, Standard & Good 90-130 lbs. 52.00-57.00, Utility 70-80 lbs. 49.50-51.50.

FARM CALVES: Holstein bulls 90-130 lbs. 67.00-89.00, Holstein heifers 90-130 lbs. 58.00-68.00.

HOGS 157. US No. 1-2 220-240 lbs. barrows and gilts 51.50-52.50, No. 1-3 200-260 lbs. 50.50-51.25, No. 2-3 185-360 lbs. 45.25-49.50. Sows US No. 1-3 350-600 lbs. sows 41.25-44.75, No. 2-3 350-600 lbs. 35.50-39.75. Boars 29.50-31.50, Light weights 31.75-35.00.

FEEDER PIGS 38. US No. 1-3 20-25 lbs. feeder pigs 18.00-24.00 per head, No. 1-3 30-40 lbs. 27.00-36.00

SHEEP 26. Choice 90-110 lbs. 58.00-63.00, Utility 60-80 lbs. 48.00-58.00. Slaughter ewes 18.00-24.00. 34 **GOATS 14.** 00-36.00 per head.

Jersey Shore, Pa.

Thursday, July 4

Report Supplied by Auction
Return to Farm Calf 58.00-83.00.

Good Veal 59.00-71.00.

Common Veal 40.00-58.00.

Choice Steers 53.00-60.00.

Good Steers 49.00-52.00.

Common Steers 42.00-48.00.

Commercial Cows 38.00-43.75.

Canners-Cutters 36.00-41.00

Shells 29.00-35.00.

Choice Heifers 50.00-54.00.

Good Heifers 47.00-52.00.

Common Heifers 36.00-45.00.

Common Feeders 44.00-50.00.

Bulls 43.00-50.00.

Sows 33.00-35.00.

Lambs 45.00-50.00.

Eggs 50.00-66.00.

LOUIS LYONS & SON

Consign your cattle and hogs, feeder pigs & calves to Louis Lyons & Son. They offer choice service, excellent sorting & marketing of your livestock.

Charles Diller, Manager
Phone 394-7915

Burnell Siegrist - Buyer & Seller
Phone 626-8653

Experienced Personnel

Immediate Weighing

KING'S AUCTION, KIRKWOOD

Hay, Straw and Grain Auction

EVERY TUESDAY
12:00

Located Rt. 472 5 miles south of Quarryville or 6 miles north of Oxford at Schaub's Auction House.

Lloyd H. Kreider, Auctioneer
AU-000513L

No out of state checks

ALL TRUCKERS AND FARMERS WELCOME

"WANTED" LEGHORN FOWL



NEW SANITIZED CAGE CART SYSTEMS OR COOPS

Call Richard Sechler,
Tom Feger, Nelson Legge
for quotations

PA Watts # 800-342-2249
or call collect 215-488-7617

SECHLER'S POULTRY, INC.

Box G, Strausstown, PA 19559

HAY & STRAW SALE

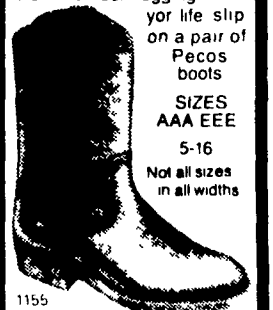
12:00 Noon

Every Wednesday
Westend of Avondale
at the intersection of
Baltimore Pike and
Route 41.

Harvey Z. Martin
215-268-3604
(Office)
215-445-5303
(Residence)

The fittin'est pull-on workboot

The Pecos 1155 is by far our best selling boot For the heel hugging fit of your life slip on a pair of Pecos boots
 SIZES AAA EEE
 5-16
 Not all sizes in all widths



Red Wings

BOOKS
SHOE SERVICE
107 E. STATE ST
QUARRYVILLE, PA 17566
717-786-2795
CLOSED WEDNESDAYS