

THE OLD FARMER'S ALMANAC

JULY 8-14, 1985

A hammock in shade is the best bed made.

Bastille Day July 14 Congress established the Marine Corps July 11 1798 Last quarter of the moon July 9 (Tues.) Vice president Aaron Burr fatally wounded Alexander Hamilton in a duel at Weehav'ken N.J. July 11 1804 Average length of days for the week 15 hours 5 minutes Henry Schoolcraft discovered the source of the Mississippi River at Lake Itaska Minn. July 13 1846 Old books make young wits wise



Ask the Old Farmer: What is the derivation of the saying 'tight as a tick,' referring to an intoxicated person? R.F.T. New Haven, Conn.
A tick will fill itself with blood until it can hold no more and then it is utterly helpless for a time — same as a drunk.

Home Hints: Avoid salting meat before roasting to prevent unnecessary loss of meat juices.

OLD FARMER'S WEATHER FORECAST

New England: Rain with cool temperatures at week's beginning, midweek some sun, some showers, with warm temperatures, end of week cloudy and cool.
Greater New York-New Jersey: Sunny and warm at weeks beginning, mid through end of week showers, cool.
Middle Atlantic Coastal: Week begins sunny and hot, thundershowers by mid-week, partly sunny, mild temperatures by week's end.

(All Rights Reserved Yankee Publishing Incorporated Dublin NH 03444)

Central U.S. Carlot

Beef Report

Tuesday, July 2

Report supplied by USDA

Compared to Tuesday's 4:00 P.M. report: Choice 3 Steer and Heifer Carcasses steady, good steady to weak. YG-4 under pressure and not tested. Demand and trading light on moderate supplies.

The Gross Boxed Beef Carcass cutout value declined \$.37 to an estimated \$92.84 per cwt, 149 loads boxed cuts reported.

Sales reported on 41 loads of Steer and Heifer Carcasses.

Steer Beef

14½ Loads

FOB Omaha Basis

Choice 3 600-900 lbs. 86.00, steady.

Choice 2 600-700 lbs. 87.00, no comparison.

Good 2 & Low 3 600-700 lbs. 78.50-81.50, no comparison.

Heifer Beef

26½ Loads

FOB Omaha Basis

Choice 3 550-700 lbs. 85.00, steady; 500-550 lbs. 81.00, steady; 400-500 lbs. 79.00.

Choice 2 600-700 lbs. 85.50-86.00, mostly 85.50, no comparison.

Good 2 & Low 3 600-700 lbs. 77.00, steady.

Steer and Heifer

Primal Cuts

10 Loads

FOB Omaha Basis

Choice 3: Hinds (H) 120-170 lbs. 113.00.

Good & Choice 2-3: Short Plates 48.00.

Cow Beef

22 Loads

Midwest: No comparison, packers firm on limited offerings.

Eastern Texas and Oklahoma: Prices \$1.00-2.00 lower than week

ago, however, most packers now are holding firm on limited offerings in face of reduced supplies and stronger Boneless Beef prices.

Sales In The Midwest

Production Area

FOB Omaha Basis

Cutter 1-2 350&sup lbs. 74.00-75.00.

Sales In Eastern Texas

And Oklahoma

Production Areas

Bng Utily 1-3 400&sup lbs. FOB

Plant 66.50-67.50, Delivered Plant

67.50-68.50.

Cutter 1-2 350&sup lbs. FOB Plant

72.50-74.50; Delivered Plant 73.50-

75.50.

Boneless Processing Beef/

Beef Trimmings

72 Loads

FOB Omaha Basis

90% Chem Lean, Fresh 100.00-

101.00.

50% Chem Lean, Fresh 37.00-

38.00, few 39.00.

Eastern Texas

and Oklahoma

Production Areas

FOB Plant

90% Chem Lean, Fresh 100.50-

101.00.

90% Chem Lean, Frozen 100.50-

102.00.

85% Chem Lean, Fresh 95.50.

85% Chem Lean, Frozen 93.50-

94.00.

65% Chem Lean, Frozen 60.00.

50% Chem Lean, Fresh 37.00.

Oklahoma Cattle

Wednesday, July 3

Report Supplied by USDA

Estimated Receipts 400

Same Day Last Week 3843

Feeder steers and heifers not

fully tested, representative sales

steady. Slaughter cow demand

light in response to upcoming

holiday with sales mostly 1 00

lower, instances 2 00 off Bulls

scarce Total auction sales 341

head including 91 head during cow

Livestock market and auction news

turn.

FEEDER STEERS: Medium and large frame 1 package 595 lb. 61.80; few 735-750 lb. 60.00-62.10; Medium and large frame mixed 1-2 750-825 lb. 56.90-59.80; Medium and large frame 2's few 600-650 lb. 57.30-58.40; package 700 lb. 55.10.

FEEDER HEIFERS: Medium frame 1 package 305 lb. 60.00; Package fleshy 450 ls. 54.80; Lot 650 lb. 56.60; Medium and large frame mixed no. 1-2 525-600 lb. 55.25-57.60; 600-700 lb. 53.50-57.30; Medium and large frame no. 2's 500-675 lb. 52.70-55.25.

SLAUGHTER COWS: Few boning and breaking utility 1-3 35.00-37.25. Cutter 1-3 34.10-37.30. Canner and low dressing cutter 30.00-33.90.

REPLACEMENT OR FEEDER COWS: Package medium frame 1 830 lb. 2-3 year old 44.25. Package medium frame 1 950 lb. 3-4 year old 38.10.

Feeder steers over 600 lb. 1.00-2.00 higher; 500-600 lb. 1.00 lower. Heifers over 500 lb. steady to 1.00 higher. Greatest advance on No. 1 muscled cattle best suited for feedlots lighter weights sparsely tested slaughter cows 1.00-2.00 lower. Slaughter bulls steady to 1.00 lower. Demand and activity greatly improved this week with an increase in buyers for both feeder cattle and cows.

FEEDER STEERS: Medium and large frame 1 few 500-600 lb. 63.00-65.50; 600-700 lb. 60.00-63.00; 700-800 lb. 59.50-62.50; 800-850 lb. 58.80-60.95.

FEEDER HEIFERS: Medium frame 1 150-275 lb. 66.00-71.50; 300-400 lb. 61.00-64.25; 400-500 lb. 59.00-61.25; 500-600 lb. 56.80-60.40; 600-700 lb. 56.50-57.75; few 700-760 lb. 54.50-56.50.

SLAUGHTER COWS: Late sales - utility 1-3 35.00-39.00; Cutter 1-2 34.10-38.70; Canner and low dressing cutter 30.00-35.00.

SLAUGHTER BULLS: Y.G. 1, few 2's 1000-1500 lb. 43.00-48.00; 1500-1850 lb. 47.00-50.00, couple very high dressing 1650-1850 lb. 51.00-52.00.

Receipts this holiday shortened week near 6,800 head; last week 18,242; last year 2,398 (Holiday week also). Feeder steers and heifers comprised 84% of run; cows and bulls 16%.

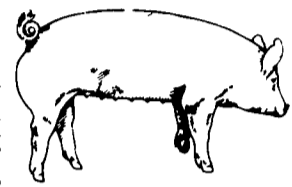
North Jersey Livestock

Hackettstown, NJ

Tuesday, July 2

Report compiled by auction

Calves 22.00-30.00
Cows 24.00-44.25.
Easy Cows 15.00-35.75
Heifers 32.00-44.75.
Bulls 38.25-50.75.
Steers 40.00-55.00.
Hogs 30.00-58.00.
Roasting Pigs, each 21.00-39.00.
Boars 32.00-34.50.
Sows 21.00-35.50.
Sheep 13.00-50.00.
Lambs, each 25.00-54.00.
Lambs, per lb. .19-.82.
Goats, each 11.00-57.00.
Kids, each 8.00-35.00.
Hides, each 5.00.
Total 1377.



EMERY'S BUYING STATION

OPEN TO RECEIVE YOUR MARKET HOGS

AT THE GREEN DRAGON MARKET RD 4, EPHRATA, PA 17522 1 MILE NORTH OF EPHRATA ON NORTH STATE STREET.

HOURS: MONDAY, TUESDAY, and WEDNESDAY 6:00 A.M. to 11:30 A.M. 215-458-5677 Residence 717-733-9648 Office

YOU ARE PAID FOR YOUR HOGS IMMEDIATELY

Ken & Lois Emery, Proprietors

Green Dragon Livestock Sales



Location: Ephrata RD 4. 1 mile N. on North State St., Ephrata.

COWS COWS COWS SALE EVERY FRIDAY

Lots of good Northern Feeder & Stockers. Slaughter Cows - Bull Steer, Veal-lamb.

11:00 A.M.-Beef Sale 200-300 each week.

1:00 P.M.-Dairy Sale.

7:00 P.M.-Small Animal Sale.

For Special Sales and Herd Dispersals on farm or at our barn or other market information call: Office 717-733-2444, Home 717-838-4318.

WALTER H. RISSER, Proprietor

All out of state and new buyers must have cash or certified check or current letter of credit from bank.



ATTENTION FARMERS

EVERY MONDAY HATFIELD PACKING CO. and MOYER PACKING CO.

Will Receive Your Hogs and Cattle at the **DANVILLE LIVESTOCK MARKET** RD 4, Danville, PA

- We will receive your hogs from 8 AM to 12 Noon every Monday Your hogs will be weighed and paid for immediately
- We will also accept your sows & boars
- Your cattle will be received from 12:30 to 5 P.M. We will either pay you for your cattle immediately or you may sell them dressed weight
- There will not be a commission or yardage fee deducted from your check.
- You may call our office Monday morning and we will be able to tell you the base price for hogs for the day

MELVIN M. LEHMAN - Owner
Danville Buying Station
Phone: 717-275-2880

FRIDAY, AUG. 2 ON THE FARM MONTHLY BRED GILT SALE

Sale to Start Promptly Every 4 Weeks at 7:30 P.M.

7:30
4 Evening Sales
June 7 July 5 Aug. 2 Aug. 30
7:30 D.S.T.

Located 18 miles south of Lancaster, Pa., 6 miles south of Quarryville, take Rt. 272 to Little Britain, turn north, follow Little Britain Road to Jackson Road, right 2nd farm, OR take Rt. 222, out of Quarryville to Cedar Hill Road to Little Britain Road to Jackson Road, left Watch for sale arrows

50 to 60 Head
Now selling our new hybrid gilts representing mostly York & Hampshire & Landrace cross. Bred for easier & less trouble over farrowing and better weight gains.

Validated Brucellosis Free Herd #169
Qualified Pseudorabies Free Herd #55

Hand mated with Breeding Dates

Local Trucker Available
No Hogs Sold On Commission

CHRIST A. BEILER
R.D. 2, Quarryville, Pa
JOHN B. STOLTZFUS
R.D. 1, Kirkwood, Pa

Abe Diffenbach, Auctioneer AU225L
NEXT SALE DATE AUGUST 30

CRIPPLED AND DISABLED

Cows, Steers & Bulls For Slaughter Under USDA Inspection

Call Wayne Taylor

717-866-6289

215-286-9400

Lebanon, Lancaster, New Holland, Morgantown, Reading, Kutztown, to Myerstown.