

— BEST BUYS —

Of This Month or Any Other Month

BACKHOE LOADERS

John Deere 310A 1978. Cab Tag 1936	\$20,000
John Deere 310A 1979 Cab Tag 2462	\$22,000
John Deere 310A 1977 Cab Tag 2492	\$18,000
John Deere 310A 1976 Cab. Tag 5018	\$16,000
John Deere 410 1979 Canopy Tag 5029	\$22,000
Ford 4500 1975. Cab. Tag 2485	\$11,000
Ford 7500, 1973. Cab, 17'8" B/H 1 1/2 yd loader, Tag 5037	\$15,000

WHEEL TRACTOR

International 784, 1980. Rollbar,
3 pt hitch, low hrs -like new
Tag 5017 **\$9,500**

RUBBER TIRED LOADERS

(7) Cat 950 (4) 1978. Cabs New 3 yd buckets, painted, new 20 5 12 ply L3 tires fully reconditioned	\$52,000 up
(2) A/C 940, 1973 1 1/2 yard, one needs work	Call For Price
Owatonna 770, 1976. Cab, 1 yard Tag 2426	\$12,000

SKID STEER LOADERS

Bobcat 440, 1983-only 488 hours Tag 3014	Call For Price
Bobcat 543, 1984 only 40 hrs Tag 7014	Call For Price
Bobcat 642, 1984 614 hours, Tag 2935	Call For Price

MISCELLANEOUS

(2) Woods M5P 5' cut - New	\$1,000 each
-------------------------------	---------------------

Call **JIM NIXON** for Prices, Information

LCL Construction Equipment



2590 Unionville Pike
Hatfield, PA 19440

(215) 362-2510 (215) 242-5757



Lancaster Farming, Saturday, June 29, 1985-C27

SHULER EQUIPMENT SALES

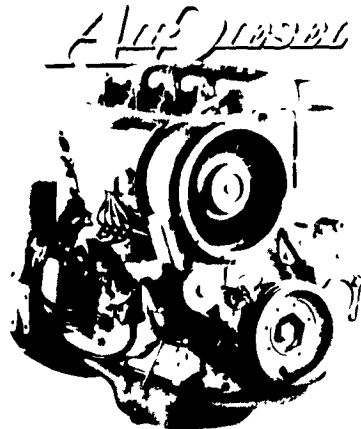
RD #1 Box 228
Shuler Road
Shermansdale Pa 17090
717 582 4365 anytime
ACRES OF USED AND
RECONDITIONED FARM
EQUIPMENT AND
TRACTORS
Also
ACRES OF USED
EQUIPMENT AND
TRACTOR PARTS
WE WILL BUY OR TRADE
YOUR USED EQUIPMENT
IN ANY CONDITION

FOR SALE

7700 John Deere Combine turbo with
rotary screen & hydrostatic, 6 row 30"
corn head, 16' flexhead. Also, 650
bushel A & L grain cart. Lowboy trailer,
model Mu-Vall, hydraulic tailgate &
winch, side extensions for 10' wide,
radial tires.

Call 301-928-3009 days,
301-648-5751 evenings
Ask for John

30 YEARS AGO
Our Dad Bet
His Future
On This
Unconventional
Diesel Engine...
HE WON!



YOU CAN BE A WINNER, TOO!

Buy DEUTZ Diesel Power Equipment
Or Power Units And Get The **LOWEST**
LIFE-CYCLE COSTS In The Industry -
Plus - Kick The Hassles Of Liquid
Cooling Systems.

Think About It...Our Dad
Did And He Went With DEUTZ.



Serving Eastern and Western PA with retail,
wholesale and O.E.M. sales



Stauffer Diesel Inc.

R.D. #3, Box 659B

Pleasant Valley Road

Ephrata, PA 17522

(717) 738-2500

NEW IDEA



BRANCH

Rts 309 & 100
New Tripoli, PA
(215) 767 7611
Mon Fri 7 30 A M 5 00 P M
Sat 7 30 A M 12 30 P M

C.J. WONSIDLER BROS.



★ 3 LOCATIONS ★

Trumbauersville to Finland Rd.
Quakertown, PA
(215) 536-1935 or 536-7523
Mon Fri 7 30 A M 9 00 P M
Sat 7 30 A M 4 00 P M

SPERRY

NEW HOLLAND



BRANCH

Lobachsville Oley, PA
(215) 987 6221 or 987 6257
Mon Fri 7 30 A M 5 00 P M
Sat 7 30 A M 12 30 P M

SIZZLING Hot June

Used Combine Sale
2-6 Row Units

"We've got your size and price."
Come Check Our Lot

COMBINES

Gleaner M2 w/Cab, Air, Heat, 13'
Grain & 630 Corn Heads
w/170 hrs
Gleaner M2 w/cab, Air/Heat, 15'
Grain & 4-row corn heads, 10
hrs!
Gleaner MKS w/13' grain & 630
corn heads
Gleaner F2 Diesel w/cab, Air, 13'
grain & 438 corn heads
Gleaner KKS w/cab, 10' grain &
238 corn heads, Excellent!
Gleaner CII w/12' grain & 438
corn heads
Gleaner E w/cab, 10' grain & 238
corn heads
Gleaner All w/cab & both heads
Gleaner All w/12' grain head
JD 55 Special w/Cab, 12' grain &
330 corn heads
JD 55 w/12' grain & 338 corn
heads
JD 45 w/both heads
JD 45 w/grain head
MF 35 Pull type
IH 315 w/cab, grain & corn heads
NH 975 w/11' grain & 238 corn
heads

NI Uni-System 702 w/717
combine, 4-row corn head
NI 767 Chopper w/702, 2-row
corn head & 761 Pick up head

BALERS

NH 271 Baler & 50 Thrower
NH 273 Baler
NH 271 Baler wire
AC 443 Baler
IH 440 Baler & 10 Thrower
IH 46 Baler & 10 Thrower w/gas
engine

HAYBINES

NH 479
(2) NH 469
NH 460
Hesston PT10
Hesston PT7
MC 9E
NI 279

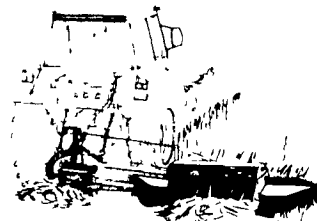
RAKES

IH 15
Massey Harris 26
NH 256
Ford 1472, 3 pt

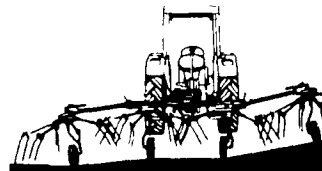
TRACTORS

JD 2750 D, w/40 hrs, like new!!!
JD 2630 D, Excellent!!
JD 4010 D w/wide front end
JD 4010 D
JD 3010 D
(2) JD 60 Gas
JD B Cyclone w/3 pt
(2) JD B Gas
Oliver 1650 Gas
Oliver 550 Gas w/loader
Oliver 500 D w/3 pt
Oliver 70 Gas
Farmall 460 D
Farmall 400
MF 180 D w/Loader
MF 50 Gas w/Loader
Long 610 D, 4WD & loader, w/92
hours, like new!!
AC 7080 D, w/cab
AC 7060 D, w/cab
AC D19 D
AC D17 D
(2) AC WD Gas
AC CA

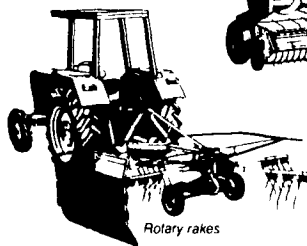
SIMPLE ECONOMICS HAY TOOLS



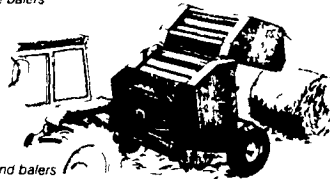
Turbo disc mowers &
mower conditioner
turbo drum mowers



Rotary haymakers



Square balers



Round balers

Deutz-Fahr hay tools make real economic sense. Nothing beats
preparing hay the rotary way. Starting with rugged Deutz-Fahr turbo
drum or disc mowers that feature quality of cut, non-plug operation,
high capacity, fast knife change and low-cost operation. Add unique
finger-type conditioning with the Deutz-Fahr mower/conditioner. Then
Deutz-Fahr rotary haymakers lift, turn, fluff and spread hay for fast
air-drying and more saved nutrients. The gentle action of Deutz-Fahr
rotary rakes forms even, fluffy, windrows with the same gentle "mov-
ing finger" action of the rotary haymaker. For "packaging" that com-
bines both high-volume capacity and protec-
tion of quality, choose the new HD 490 Square
Baler or GP 220 Round Baler. Deutz-Fahr hay
tools treat your hay, and your money, gently.



Stauffer Diesel Inc.

R.D. #3, Box 659B

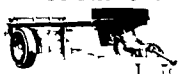
Pleasant Valley Road

Ephrata, PA 17522

(717) 738-2500

SPECIAL ANNOUNCEMENT...

SPRING CLEARANCE SALE on new NEW IDEA and NEW HOLLAND
100 BU. to 350 BU. MANURE SPREADERS.



UNITS IN STOCK ARE PRICED RIGHT
THAT EVERY FARMER CAN OWN A NEW SPREADER TODAY!!!



SAVE THE CROP SAVE THE QUALITY