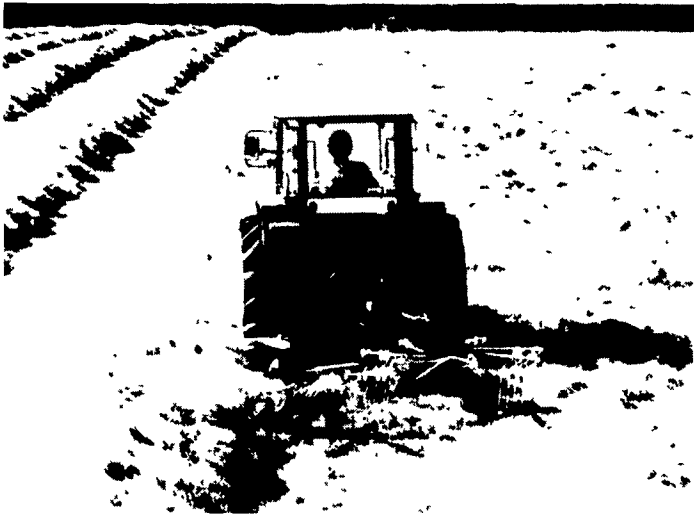
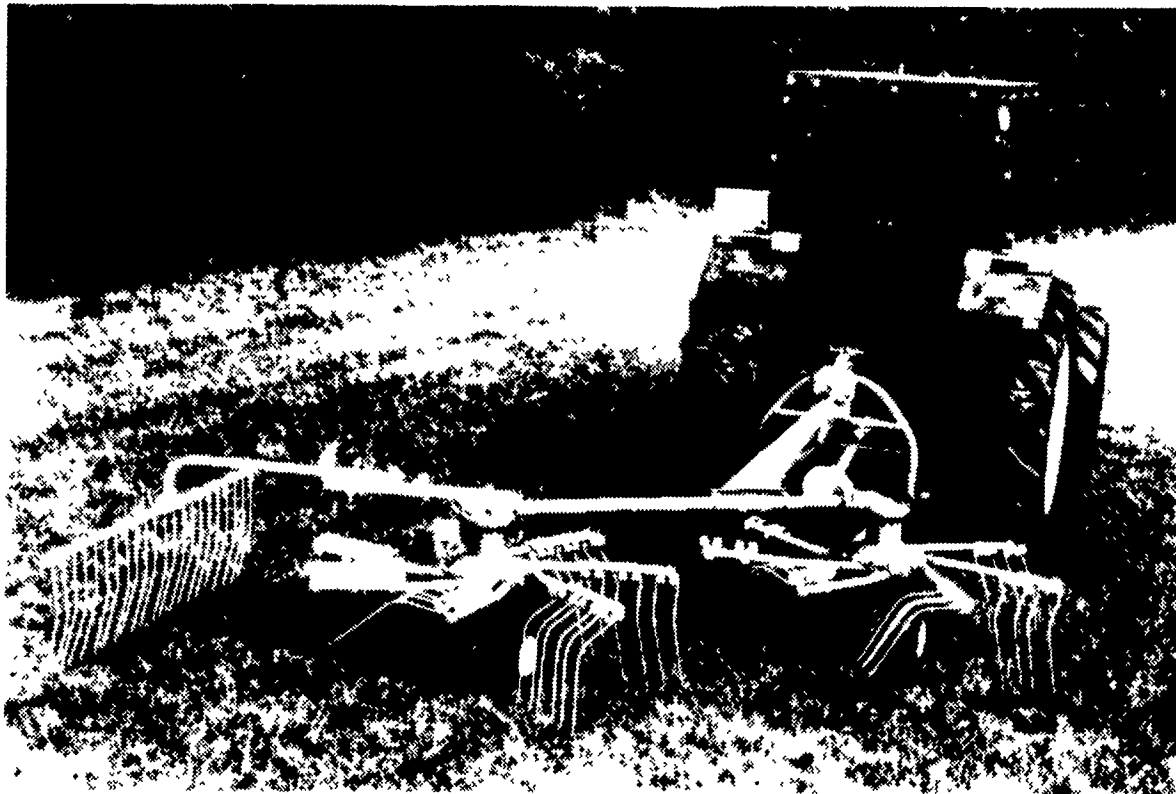


NOW IS YOUR CHANCE TO BUY THAT GYRORAKE YOU NEED AND GET A \$400 REBATE!



POINTS OF PARTICULAR INTEREST



DELICATE CROPS MUST BE HANDLED WITH EXTREME CARE DURING WINDROWING TO ENSURE THE LEAVES REMAIN ON STEMS FOR THIS YOU NEED A KUHN GYRO-RAKE!!!

The Gyrorake produces single or double swaths, puts two swaths into one, turns and moves the crop all with the same gentle action. A well shaped swath is formed whilst leaving the raked ground clean.

Thanks to its large working width, the GA 402 is ideal for high capacity raking.

The articulated 3-point frame ensures regular density swaths without unsightly mounds, even when negotiating the tightest corners. When raised for transport, the unit automatically locks into a central position directly behind the tractor.



This rebate allows you to purchase a 13 ft. rake for the price of a 10 ft rake!!!

CUSTOMER NAME _____
ADDRESS _____
TELEPHONE _____
EQUIP. PURCHASED _____
SERIAL NUMBER _____
COUPON MUST BE SENT IN BY DEALER WITH THE SALES SLIP FOR CUSTOMER TO RECEIVE A CHECK FROM THE C.A. MCDADE COMPANY, INC. P.O. BOX 277 MONROEVILLE, PA 15146



Components controlling movement of the tine arms are enclosed in a sealed housing, safe from rain, dust and dry grass particles.

PENNSYLVANIA

- Acme**
Chackans Sales of Acme
412-423 4666
- Altoona**
Hines Equipment
814-742-8171
- Bechtelsville**
Miller Equipment
215-845-2911
- Bedford**
Bence's Farm Equipment
814 623 8601
- Carlisle**
Peterman Farm Equipment Inc
717-249-5338
- Cochranville**
Stoltzfus Farm Service
215-593-2408
- Cresson**
Hines Equipment
814-886-4183
- Doylestown**
Paul W. Hestand Company Inc
215-348-9041
- Edinboro**
R. R. Walker & Son
814-734-1552
- Everett**
Morris International Inc
814-652-6101
- Export**
Route 66 Tractor Supply
412-327-7226

- Greenville**
D. R. Thompson Farm Supply
412 588-7520
- Halifax**
Sweigard Brothers
717-896-3414
- Hartstown**
Oswald Equipment Company
814-382-4445
- Honesdale**
Marshall Machine
717-729-7117
- Kittanning**
W. C. Crytzer Equipment Co
412-543-2441
- Latrobe**
Moyher & Schultz
412-423-4361
- Lititz**
Binkley & Hurst Brothers
717-626-4705
- Lynnport**
Kermit K. Kistler Inc
215-298-2011
- Mahaffey**
Hulton Farm Equipment
814-277-5564
- Marion Center**
Allegheny Farm Service
412-397-5534
- Mercer**
Ralph W. Kyle Inc
412-748-4308

- New Alexandria**
Lone Maple Sales & Service
412 668-7172
- New Bethlehem**
Hetrick's Farm Supply
814 275-3507
- New Holland**
ABC Groff Inc
717-354-4731
- Peach Bottom**
H. H. H. Equipment
717-548-2640
- Perryopolis**
John Brown Equipment
412-326-8812
- Prospect**
Flinner Farm Equipment
412-865-2600
- Saxonburg**
Al Vettori
412-352-9269
- St. Marys**
Grotzinger Equipment Co. Inc
814-834-2065
- Smicksburg**
Barrett Equipment Company
814-257-8265
- Somerset**
Summit Machinery Inc
814-445-2528
- Stoneboro**
Elder Sales & Service
412-376-3740

- Union City**
McCrillis Farm Supply
814 694 2011
 - Waynesboro**
B. Equipment
717 762-3193
 - Wescosville**
Lehigh AG Equipment
215-398-2553
 - West Chester**
M. S. Yearsley & Sons
215-696-2990
 - Zeiglerville**
Robert E. Little Inc
215-287-9643
- NEW JERSEY**
- Columbus**
Reed Brothers Equipment
609-298-3441
 - Hightstown**
Hights Farm Equipment
Company
609-448-1370
 - Washington**
Frank Rymon & Sons
201-689-1464

- VIRGINIA**
- Dayton**
D. J. Implements
703-879-9926

MARYLAND

- Lineboro**
Wertz Garage Inc
301-374-2672
 - Mt. Lake Park**
Arnold Brothers Equipment
Corp
301-334-9605
 - Rising Sun**
Biggs Inc
301-658-5531
- WEST VIRGINIA**
- Bridgeport**
Hall's Motor
304-842-2611
 - Bruceon Mills**
Rexroad Farm Equipment Co
304-379-2338
 - Fairmont**
Morgan Ford Tractor
304-534-3924
 - Parkersburg**
Boso Equipment Inc
304-485-5446
 - Philippi**
Kines Motor Company Inc
304-457-1010
 - Ripley**
Fairplain Tractor Sales
304-372-9875
 - Scott Depot**
Interstate Equipment Sales
304-757-6777

OFFER GOOD THRU JULY 31, 1985

OFFER APPLIES TO MODEL GA402 ONLY