



Virginia Auction Summary

June 6-12
Report supplied by VDA
Total of Va. Weekly Feeder Cattle Auction Receipts: 3,548.
Trend: Steady to 3.00 lower.
South & Southwest Va. Smithfield

June 6-12
Report supplied by VDA
STEERS: Medium 1 300-500 lbs. 60.50-71.00, 500-700 lbs. 60.00-70.00, 700-1000 lbs. 53.00-60.25. Large 1 300-500 lbs. 61.00-63.00, 500-700 lbs. 62.00-69.00, 700-1000 lbs. 51.75-59.50. Small 1 300-500 lbs. 54.00-65.00, 500-700 lbs. 55.00-65.75.

HEIFERS: Medium 1 300-500 lbs. 52.00-61.00, 500-700 lbs. 47.50-47.50, 700-900 lbs. 45.75-57.50. Large 1 300-500 lbs. 52.00-59.00, 500-700 lbs. 50.00-62.25, 700-900 lbs. 47.50-51.00, Small 1 300-500 lbs. 45.00-57.00, 500-700 lbs. 44.50-57.00.

Northern Va. Auction Summary
June 6-12
Report supplied by VDA
STEERS: Medium 1 300-500 lbs. 62.50-75.00, 500-700 lbs. 59.50-71.50, 700-1000 lbs. 52.00-66.00. Large 1 300-500 66.00-79.00, 500-700 lbs.

Livestock market and auction news

63.00-68.00, 700-1000 lbs. 54.00-59.50. Small 1 300-500 lbs. 59.50-69.00, 500-700 lbs. 55.50-62.50, 700-1000 lbs. 53.00-59.00.
HEIFERS: Medium 1 300-500 lbs. 51.00-60.50, 500-700 lbs. 50.00-59.50, 700-900 lbs. 45.75-54.50. Large 1 300-500 54.00-60.00, 500-700 lbs. 49.50-61.00, 700-900 lbs. 47.50-57.00. Small 1 300-500 lbs. 45.00-57.00, 500-700 lbs. 45.00-55.00.

Shenandoah Valley Livestock

Harrisonburg, Va. Saturday, June 8
Report supplied by auction
FEEDER CATTLE: Trend Steady. Steers- M&L-1 300-500 lbs. 67.00-75.00, 500-700 lbs. 64.00-71.50, 700-1000 lbs. 56.75-61.50, Holstein 300-1000 44.00-59.75. S-1&M&L-2 300-500 lbs. 64.00-72.00; 500-700 lbs. Few 68.00-71.00. Feeder Bulls: 300-500 lbs. 59.50-69.50, 500-700 lbs. 54.00-57.50, 700-1000 lbs. 46.00-51.00. S-L&M&L-2 300-500 lbs. 54.00-64.00; 500-700 lbs. 45.00-54.50. Heifers: M&L-1 300-500 lbs. 54.00-58.50, 1 lot 62.00; 500-700 lbs. 51.50-57.50, 1 lot 60.00, 700-800 lbs. Few 47.50-53.00. S-L&M&L-2 300-500 lbs. 50.50-53.00, 500-700 lbs. 46.00-54.50.

STOCK COWS: Beef w/Calves 470.00-625.00. Baby Calves 55 head. 35.00-75.00.
SLAUGHTER COWS: Utility & Commercial 2-4 35.00-42.50; Canner & Cutters 1-3 31.75-33.00.
SLAUGHTER BULLS 1 & 2: 42.00-53.00.
LAMBS: Trend- 4.00 lower. Blue O. High Choice & Prime 72.00; Red O. Choice 69.00; Feeder Lambs Choice 68.00; Slaughter Ewes 16.50-26.25.
HOGS: .50 higher. US1-3 200-240 lbs. 44.00. Sows 1-3 32.50-37.00. Boars 25.00-28.25.
VEAL: Choice & Prime 68.00; Good 59.00.
SLAUGHTER CALVES: Good & Choice 60.00-68.00.

Four States Livestock

Hagerstown, Md. Wednesday, June 6
Report supplied by Auction
SLAUGHTER: Fed Steers- Steady prices. Choice 52.00-53.25; Good 48.00-51.00; Medium 45.00-47.00. Heifers- Choice 48.00-49.75; Good 45.00-47.00; Medium 40.00-44.00. Cows- \$1.50 lower. High Yield

41.50-44.25; Average 38.00-41.00; Big Middle 35.00-37.00; Fatty Herf. 34.00-39.00; Shelly 36.00 Down. Fat Bulls- \$1.50 lower. Good 49.00-50.25; Medium 45.00-48.00. Veal Calves- \$4.00-\$8.00 higher. Choice 80.00-84.00; Good 75.00-79.00; Medium 60.00-74.00; Farm Hfrs. 60.00-67.00; Farm Bulls 70.00-83.00; Light Calves 54.00-67.00; Weak Calves 53.00 down. Lambs- Few offered. Good & Choice 65.00-68.00; Medium 59.00-64.00.

STOCKER: Steers- 300-550 lbs. Very active steady prices. Choice 68.00-72.00; Good 60.00-67.00; Medium 51.00-59.00; Culls 50.00 down. Steers- 600-850 lbs. Choice 63.00-68.00; Good 53.00-62.00; Medium 52.00 down. Heifers- (All Weights) Choice 52.00-53.00; Good 46.00-51.00; Medium 41.00-45.00. Bulls- Choice 58.00-60.50; Good 52.00-57.00; Medium 46.00-51.00. Springing Heifers to 700.00. Pigs, Hd. \$1.00 to \$3.00 lower. 20-30 lbs. 21.00-33.00; 40-60 lbs. 34.00-42.00. Slaughter Hogs- No top weights offered. 245-255 lbs. 42.00-42.75. Sows- 350-650 lbs. 35.00-39.25.

Special next week will have 2 Polled Purebred Simmental Bulls one year old, and 1 Registered Polled Hereford Bull with papers, weighing around 900-1000 lbs.; also 1 Registered Holstein Bull sired by Bova, born July 1984. Hatfield tops \$46.75.

Westminster Livestock Auction

Westminster, Pa. Tuesday, June 4
Report supplied by auction
SLAUGHTER COWS: Light run prices, \$2.00 lower. Utility 39.00-42.50; Canners 36.00-39.00; Shelly 35.00 down. Bulls- 1 High Yield Individual; 1700 lb. at 53.25; Good 49.00-50.00; Medium 46.00-49.00. Fed Steers- Few Choice to 55.00; Good to Choice 50.00-53.00; Holstein 47.00-50.00. Veal Calves- Good run, higher prices. Good & Low Choice 65.00-73.00; Standard 55.00-65.00; Killers 80-110 lb. 5.00-8.00; Higher 60.00-68.00; Weak 50.00 down. Farm Calves- Holstein Bulls 100-130 lb. 68.00-82.00; 90-100 lb. 65.00-75.00. Butcher Hogs-

Steady prices. US #1 & 3 215-240 lb. 43.25-43.85; 240-260 lb. 41.00-43.85. Sows- 475-625 lb. 36.25-38.00. Boars- 700-750 lb. 31.75-32.75.

STOCK CATTLE: 60 head. Steers- Scarce Bulk 500-700 lb. 62.00-68.00; Medium 56.00-60.00; Few Holsteins 50.00-52.00. Heifers- \$3.00 higher. 300-500 lb. 56.00-59.00; 4 head 62.00-64.50; 500-700 lb. 54.00-58.00; Medium 45.00-49.00. Bulls- 300-500 lb. Good 55.00-60.00; 1 325 lb. at 73.00; 500-700 lb. 52.00-63.00. Lambs- 30 head. 90-115 lb. 68.00-70.00; 55-70 lb. 64.00-75.00; 1 35 lb. at 102.00. Sheep- 20 head. Good 20.00-29.00; Fat 9.00-20.00. Goats- 40 head, good demand. Mature 28.00-48.00; Thin 20.00-28.00; Kids 20.00-36.00. Pigs & Shoats- 150 head. Steady to \$2.00 lower. 20-30 lb. 20.00-26.00; 30-50 lb. 30.00-43.50; 65-90 lb. 49.00-54.00. By the lb. 125-150 lb. 35.00-44.00. Stock Boars- 240-310 lb. 32.50-33.50; 140-210 lb. 30.00-32.50.

Hay 3 Loads

New Alfalfa 90 cents to 1.15 a bale, Timothy \$92.00 a ton.
The ornament of a house is the friends who frequent it.

Penns Valley Livestock

Centre Hall, Pa. Tuesday, June 11
Report supplied by Auction
Beef Cows: Utility and Commercial 39.50-42.10; Cutters 37.25-39.25; Canners 34.75-37.00; Shells 31.00. Heifers: Commercial 42.50-46.25. Steers: Good 50.75-54.35; Standard 46.50-50.00. Bulls: Good 51.75-53.10; Standard 48.00-51.25. Veal Calves: Choice 77.00-85.00; Good 69.00-76.00; Standard 55.00-68.00; Utility 49.00-54.00. Farm Calves: Bulls 77.00-97.000; Heifers 65.00-72.00. Hogs: 42.85-45.10. Sows: 35.50-37.25. Shoats: 25-30 lbs. per head 16.00-24.00; 30-35 lbs. per head 26.00-34.00; 35-50 lbs. per head 36.00-42.00. Lambs: 62.50-72.00. Goats per head 16.00-24.00.

LOUIS LYONS & SON

Consign your cattle and hogs, feeder pigs & calves to Louis Lyons & Son. They offer choice service, excellent sorting & marketing of your livestock.

Charles Diller, Manager
Phone 394-7915

Burnell Siegrist - Buyer & Seller
Phone 626-8653

Experienced Personnel

Immediate Weighing

KING'S AUCTION, KIRKWOOD

Hay, Straw and Grain Auction

EVERY TUESDAY
12:00

Located Rt. 472 5 miles south of Quarryville or 6 miles north of Oxford at Schaub's Auction House.

Lloyd H. Kreider, Auctioneer
AU-000513L

No out of state checks

ALL TRUCKERS AND FARMERS WELCOME

ATTENTION FARMERS

The New Way To Market Your Livestock

EVERY MONDAY HATFIELD PACKING CO. WILL RECEIVE YOUR HOGS
EVERY THURSDAY MOYER PACKING CO. WILL RECEIVE YOUR CATTLE

AT THE

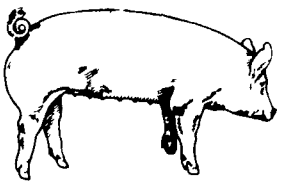
BLAIR-BEDFORD BUYING STATION

RD #1, Martinsburg, PA

- Every Monday we will receive your hogs from 7 30 a m to 11 a m Also, calves from 7 30 a m to 3 p m Your animals will be weighed & paid for immediately
- We will also accept your sows and boars
- Your Butcher Cattle & Calves will be received from 8 a m to 12 noon every Thursday We will either pay you for your cattle immediately or you may sell them dressed weight
- There will not be a commission or yardage fee deducted from your check
- You may call our office Monday mornings and we will be able to tell you the base price for hogs for the day

DALE R. HOOVER - Owner
Blair-Bedford Buying Station

Business Phone 814-793-3077 Residence Phone 814-793-2657



EMERY'S BUYING STATION

OPEN TO RECEIVE YOUR MARKET HOGS

AT THE GREEN DRAGON MARKET
RD 4, EPHRATA, PA 17522
1 MILE NORTH OF EPHRATA
ON NORTH STATE STREET.

HOURS: MONDAY, TUESDAY, and WEDNESDAY 6:00 A.M. to 11:30 A.M.
215-458-5677 Residence
717-733-9648 Office

YOU ARE PAID FOR YOUR HOGS IMMEDIATELY

Ken & Lois Emery, Proprietors

WHOLE COTTON SEED AND PEANUT HULLS NAAMAN EBERLY

Paradise, PA

717-687-0990

717-299-3001

CRIPPLED AND DISABLED

Cows, Steers & Bulls For Slaughter Under USDA Inspection

Call Wayne Taylor

717-866-6289

215-286-9400

Lebanon, Lancaster, New Holland, Morgantown, Reading, Kutztown, to Myerstown.

SWINE PRODUCTION SALES AND SERVICE

Complete Feeding Programs and Services

Feeding Programs to Meet Your Individual Needs

Computerized Record Keeping System

Providing Veterinarian Service

PA. Toll Free
1-800-468-5524



419 W. High Street
Elizabethtown, PA 17022

Supplying Farm Fresh Feeder Pigs

Marketing and Hedging Services

Marketing of Genesis Breeding Stock

Developing Individual Financial Programs

Direct Dial
(717) 367-1525