

Butlers make a long-term c

BY JOYCE BUPP
Staff Correspondent

INWOOD, W. Va. — In spite of current economic spasms, the American dairy industry is far from a dying patient. In fact, some farms are continuing to optimistically invest in updating facilities, geared toward better efficiency in production and labor.

Among those looking favorably toward the future is Fred Butler, Sr., an ag leader and activist in national dairy industry circles for nearly three decades.

As president of the Middle Atlantic Division and corporate board member of Dairymen, Inc.,

and secretary-treasurer of the National Milk Producers Federation, Butler's been on the front lines of the industry battles in dealing with a tight ag economy, and the supply-demand balancing of the nation's milk supplies.

He's also president of the West Virginia Farmers Association, and a new member of the American Farm Bureau Federation board. In late May, in fact, he returned from an AFBF ag-fact-finding mission in Pacific Rim countries on export expansion opportunities.

Butler and his 26-year-old son, Freddie, a graduate of Potomac State, recently put the finishing

touches to the family's new dairy housing facilities. The T-shaped, high-roofed structure is 70 by 300 feet, with free stalls for 200 head, and is designed for future expansion capability.

Projecting from the front center

of the football field-sized housing area is a double-eight milking parlor, tank, utility and office rooms, plus six hospital-maternity stall pens.

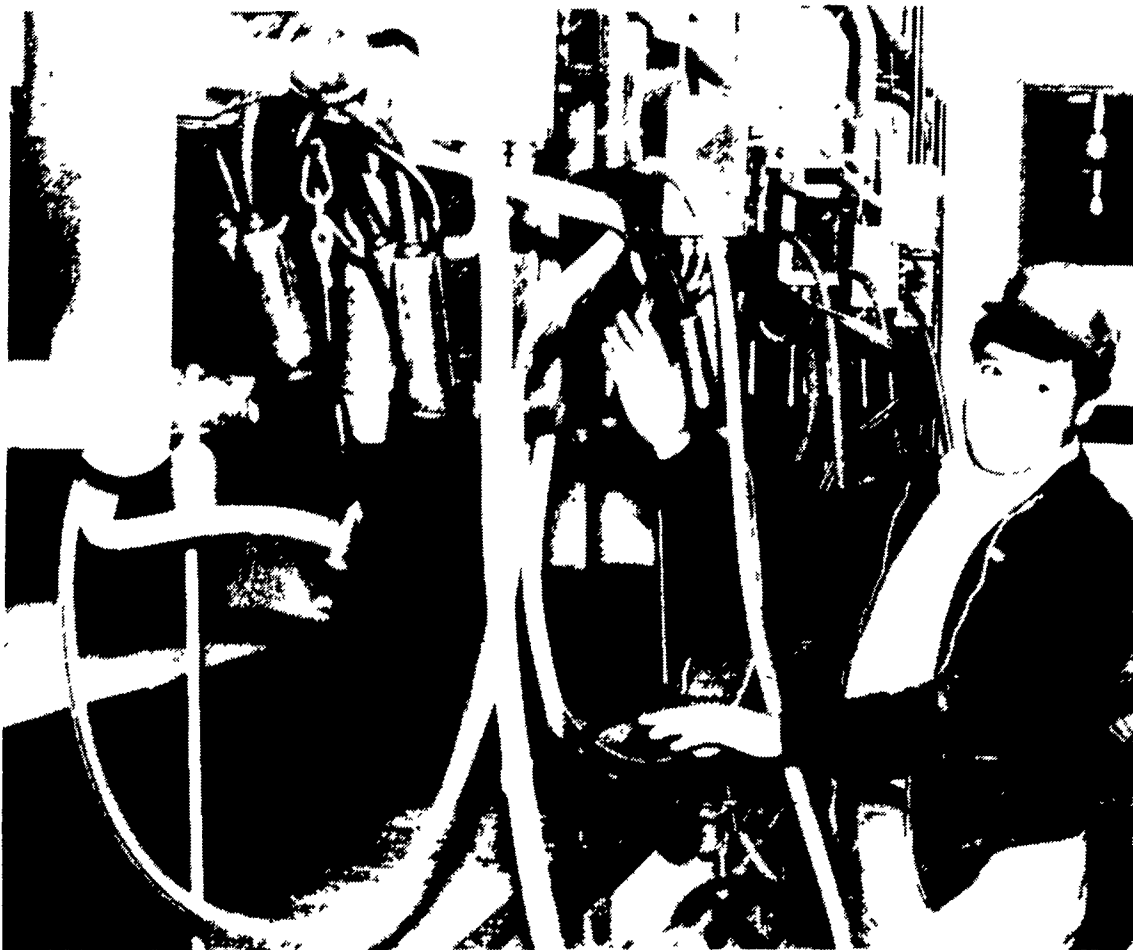
The block and metal super-structure is a visible commitment

of the Butler family to dairying over the long term. And, after pencil-pushing sessions, Butler is adamant that the cows will pay for this nearly \$300,000 investment.

Initial goal is a 2,000-pound per cow per year production im-



Fred Butler, owner of one of West Virginia's newest dairy facilities, answers questions during a recent tour by visitors.

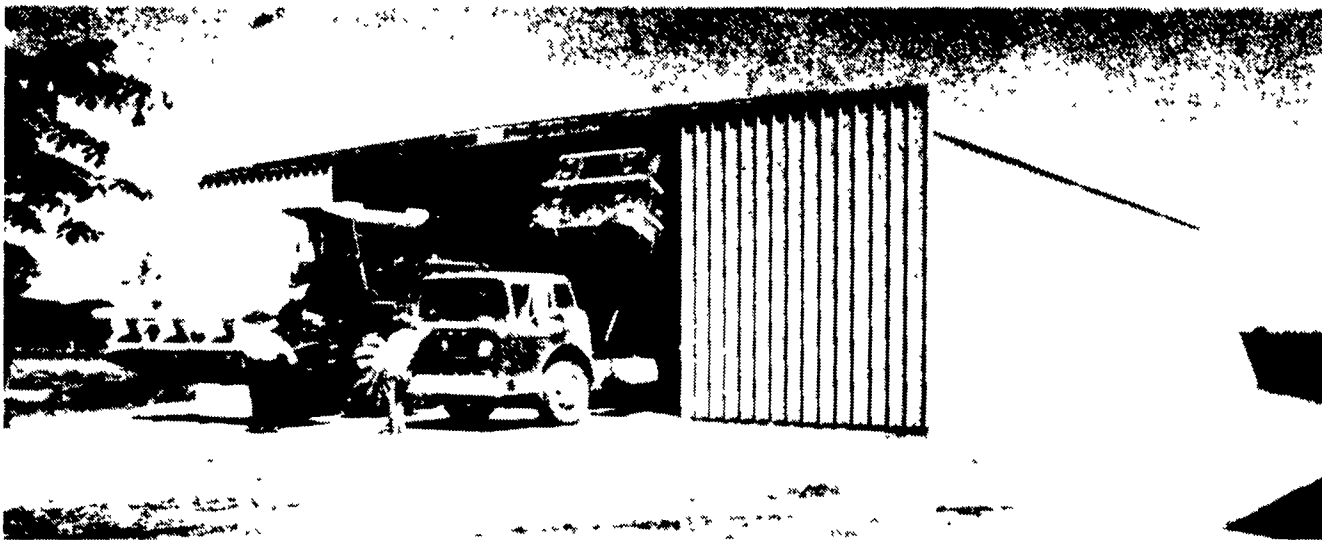


Freddie Butler is especially pleased with milking efficiency in the double-eight parlor. Milking time has been cut to two hours, about half the time in the prior set-up. Automatic take-offs and crowd gates are other features to keep milking moving smoothly.

**QUALITY BUILDINGS
BY BUTLER**



SUMMER SALES



FARMSTED® I

\$8,914⁰⁰* F.O.B.

See What \$8,914*
Will Buy From Your Butler

**NOBODY
BUT BUTLER**

WILL GIVE YOU QUALITY

* Prices May Vary From

BUTLER MFG. CO.
Attn P E Hess
P O Box 337 Oxford PA 19363



BUY OR LEASE

**ASK ABOUT OUR
NEW DEALER PROGRAM
MAIL IN COUPON TODAY**

Name _____
Address _____
County _____ Zip _____
City _____ State _____
Phone _____
(Include area code) LF

*See Your
Agri-Builder
Before
You Buy*

GRANT'S CONSTRUCTION
CO., INC
R.D. #1
Buffalo Mills, PA 15534
PH 814-842-6540

C & M SALES INC
R D #1
Honesdale, PA 18431
PH 717 253 1612

GOMPFF CONSTRUCTION
CO INC
1841 Jerry's Road
Street, MD 21154
PH 301 692 5350

MYERS BUILDING
SYSTEMS, INC
R D #1 Box 161
Clear Spring MD 21722
PH 301 582 4200

NAZARETH BUILDING
SYSTEMS, INC
P O Box 47
Nazareth PA 18064
PH 215 837 7700

TRI COUNTY
AGRI SYSTEMS
R D #1, Box 55
Swedesboro NJ 08085
PH 609-467 3174

MATTSON ENTERPRISES
1605 Mt Holly Rd
Burlington, NJ 08016
PH 609-386 1400