



They're Here!

INTERNATIONAL 200 SERIES TRACTORS



In Two Wheel And All Wheel Drive, With Turf Or Ag Tires

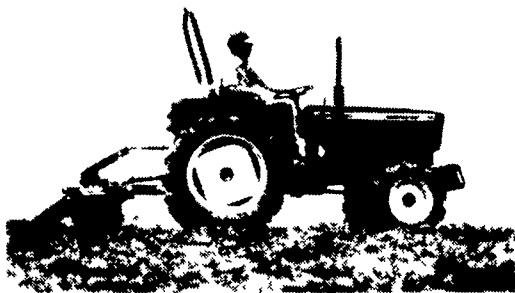


- Model 254 available in 2 or 4-wheel drive.
- Model 244 available in 2 or 4-wheel drive.
- Model 234 available in 2 or 4-wheel drive and with gear or hydrostatic drive.

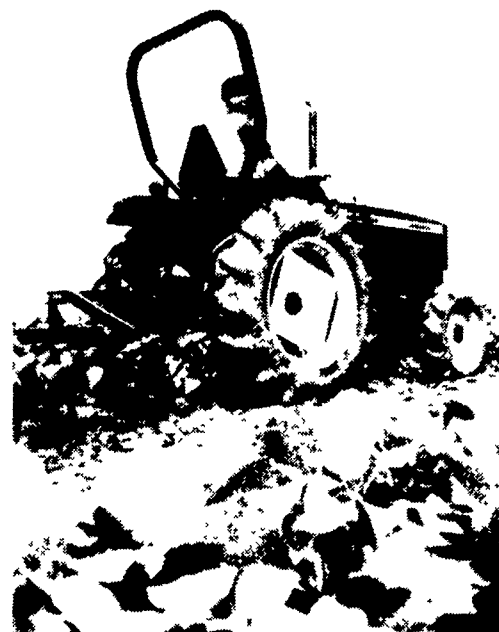
They Do It All!



Make fast work of any mowing job with a rear-mounted rotary mower. Shown is a 48-inch (1219 mm) model. Also available is a larger model which cuts a 60-inch (1524 mm) swath. Either is a perfect match for the International 234 Hydro tractor. 3-point hitch mounting. PTO driven triple spindles.



Here, the 244 4-wheel drive model is equipped with a PTO-driven rototiller. This combination of agility, traction and capacity puts real pull power into field work. 4-wheel drive and a loader or blade also makes the 244 ideal for use on small feed floors or in cramped livestock pens.



The 254 4-wheel drive and a spring-tooth harrow make an excellent team for thorough, close cultivation of corn, soybeans, vegetables and other row crops.



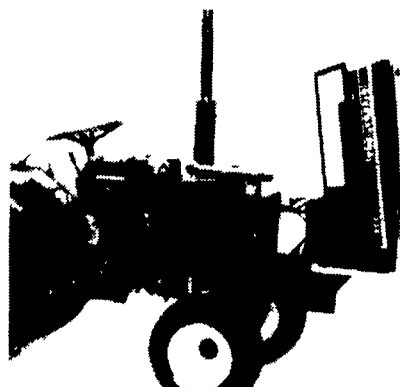
This disk harrow is 3-point hitch mounted for excellent control. Angling disk gangs.



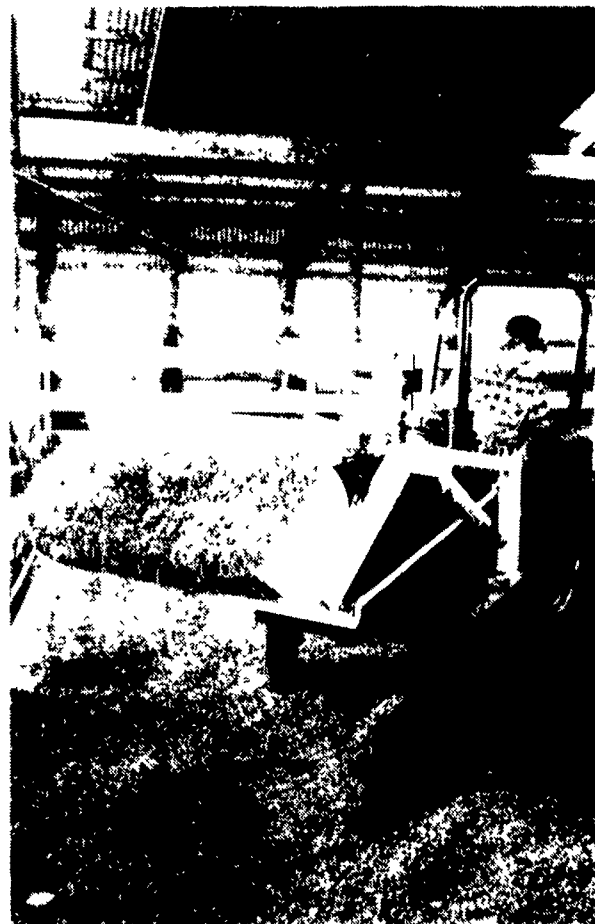
Keep cutting through tough prairie grass, wiry Bermuda or any crop you want to handle with a sickle-bar mower.



4-wheel drive and front-mounted blade adapts the 254 to snow removal and wide range of farm and light construction chores.



You'll appreciate the flip-up hood that provides convenient access to the engine from the top or either side. High-capacity, dry-type air cleaner. The 12-volt battery is in front of the trash screen and radiator so it's easy to reach for service. Model 234 shown.



**Our Prices Are Very Good,
With Service To Back It Up!**

BINKLEY & HURST BROS., INC.

133 Rothsville Station Road, Lititz, PA 17543

Located 1/2 Mile North of Rothsville

PH: 717-626-4705

Hours: Mon - Fri. 7 AM - 5 PM; Sat 7 AM - 11 30 AM; Sun. Closed - Lord's Day