

**35 TRUCKS AND TRAILERS**  
 1973 C-65 truck, 18 ft. insulated van body, rear roll-up door, 4 speed trans., 2 speed rear, good condition. Lanc Co 717-354-7739.

1973 cab over Peterbilt tractor, 903 w/10SP. 1976 Mack R Model tractor, 300 maxidyne w/5SP. 215-822-1720.  
 1974 Ford LT9000, Cummins 13SP, 12,000 ft., 38,000 rears, 10x20 tires, PS 717-354-4616. Ext. 42.

1977 Ford F600 w/15 aluminum cattle body, 5 spd. transmission, 2 spd rear axle. 201-475-4656  
 1977 Ford Louisville 800, chassis, 27,500 GVW, 391 engine, 5+2 trans., 19,000 mis., air brakes, PS, just overhauled 717-786-7502

77 Int 1750B Gas tractor, motor bad Best Offer 301-838-8602.  
 '83 VW pickup, fuel ejection, front wheel drive, 5 spd w/over drive, 30,000 miles w/Eagle cap, like new \$3,800. 717-273-6018 after 5 p.m

**36 REAL ESTATE**  
 For Sale Farm 28.8 acres of fenced pasture, 2 acre pond winding macadam driveway, 60x60 bank barn with open housing, 40x64 Agway implement shed 2 story contemporary solar design home. Everything less than 5 years old \$389,500. Call Rick Clay, RILEY HORST REALTORS 717-273-0222, 9-5 PM.

**35 TRUCKS AND TRAILERS**  
 1977 IH cab over, 350 Cummins, recent inframe major, front rear and power divider rebuilt, 13 spd. trans., new power steering box and pump, air condition, inspected. 717-444-3038  
 1979 Chevrolet tandem, 10" tires, 13 spd. transmission, Cat engine, air seat, tilt hood and steering, 25' flatbed, low miles. 301-734-6477  
 1985 aluminum and steel gooseneck livestock trailers. 301-582-2450  
 '71 Diamond Reo Conv., 8V71-318 Detroit, RT09513, 30,000 mis., out of frame Major, eng. + trans., 12,000 ft., 38,000 rears, 4:11 ratio, hend susp., P.S., wet line, alum. buds frt., 8 new tires (no caps), new P.S. box, new batteries, also 35' Kentucky flat trailer, recent brake work. 215-383-5044.  
 '77 Ford COE 700 tractor w/40' front trailer. 301-879-1981.

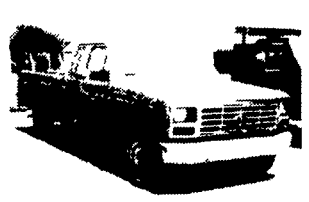
1974 Clark Feed Trailer w/Auger, 32' 1973 R-Model Mack  
 Will Sell Separately or as Unit  
**717-684-6108**

**USED TIRES**  
 Truck, Farm and off the road. Most sizes available.  
 Call  
**215-432-1032**  
 Days or  
**215-261-2374**  
 evenings  
 W.T. & T.A.

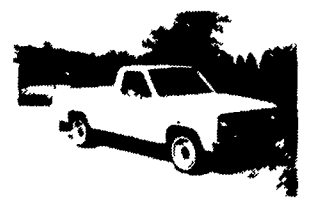
**FOR SALE**



'85 GMC Dual Whl. Crew Cab Pickup, 6.2 Diesel, 4 Spd., PS, PB, Air, Camper Package, 10,000 GVW, Only 75 Miles.  
**'16,500**



1984 Ford F150 Super Cab Pickup, 300 6-Cyl., 3 Speed, PS, PB, 17,000 Miles  
**'8,250**



1983 Ford Ranger Diesel Long Bed 4-Speed, PS, PB, Sliding Rear Window, Tu Tone Blue & White, 25,000 Miles, Ex Cond  
**'5,250**



1980 Chevy Scottsdale C30 4 Wheel Drive Crew Cab, 350 Auto, PS, PB, AM-FM Dual Tanks, 40,000 Local 1 Owner  
**'9,200**



83 Chevy Scottsdale Suburban 6 Pass., 305 Auto., PS, PB, Air, AM/FM Cass Stereo, 34,000 Miles, Dark Brown  
**'8,950**



1983 GMC Sierra Classic, Dual Wheel Cab & Chassis, 454 4 Speed, PS, PB, Air, 10,000 GVW  
**'8,950**



1980 Dodge D200 3/4-Ton Club Cab Pickup, 360 4-Speed PS, PB, Dual Tanks, 8500 GVW Trailing Package  
**'4,450**



1983 Chevy Sport Van, 12 Pass., 350 Auto., PS, PB, 34,000 Miles, Ex. Cond.  
**'8,500**



1984 Dodge 1/2-Ton 4x4, 6 Cyl., HD, 4-Speed, PS, PB, Radial Tires, 8,000 Miles  
**'8,250**



1983 Ford F350 Dual Wheel, 12 Ft. Flat Bed, 351 4-Speed, PS, PB, Dual Tanks  
**'8,950**



1983 Ford F250 3/4-Ton Pickup 300 6 Cyl., HD 4-Speed, PS, PB, 29,000 Miles  
**'7,400**



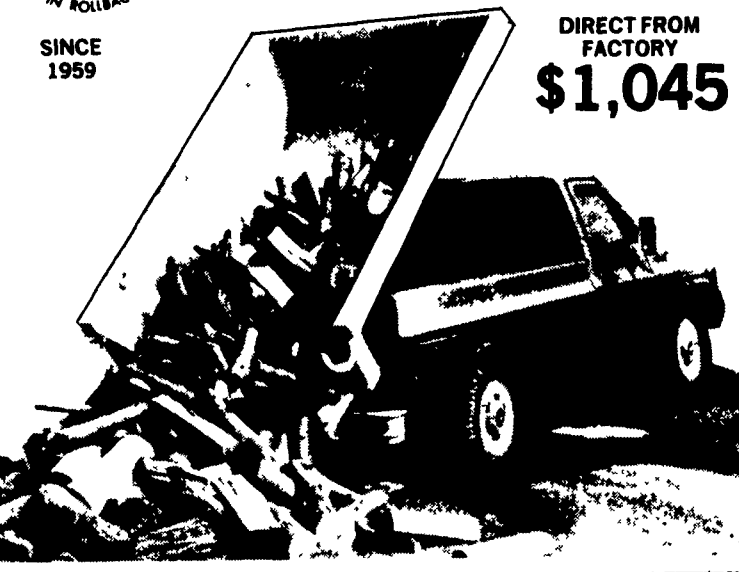
1983 Dodge D250 3/4-Ton Pickup 6 Cyl., HD, 4 Speed, PS, PB, Air, AM-FM, Ex Cond  
**'6,950**

**A & J AUTO SALES**  
 798 East Main Street - Rt. 322  
 Ephrata, PA 17522  
**717-733-2873**



- STRUCTURAL INTEGRITY
- QUALITY CONSTRUCTION
- DESIGN INNOVATION

**E-Z DUMPER®**



DIRECT FROM FACTORY  
**\$1,045**

**DUMP UNIT FOR PICKUP TRUCKS SAVE TIME....LABOR....MONEY**

The E-Z DUMPER is hydraulically operated and is powered by the 12 volt truck battery. The safe removable key switch is standard equipment. The dump angle of 47° assures quick and clean unloading. The removable tailgate can be opened from the top or bottom for easy flow control.

Designed for do-it-yourself installation - the E-Z DUMPER comes ready to install, including hydraulic fluid. Most pickup trucks require no alterations. Just slide the E-Z DUMPER and secure with clamps using existing bolts and holes. Installation is fast and simple. Dump over 4,000 lb. of firewood, gravel, topsoil, coal, corn, mulch, etc. in seconds.

CALL TOLL FREE 1-800-248-6000  
 PA 1-800-842-4000

**JERR-DAN CORP.**  
 1080 HYKES ROAD, GREENCASTLE, PA. 17225

For Sale Excellent location 12x60, 2 bedroom mobile home on farm in East Hempfield Twp. Double insulation All appliances and air conditioning can stay at this location 717-299-2209

For Sale 2 story frame dwelling with 1 acre in Tioga Twp., Tioga Co. Ideal for hunting camp or seasonal dwelling. Near Game Lands, 3 recreational lakes. \$7,000. 717-537-6525

For Sale: 2 building sites, 13 surveyed acres each or 26 acres. Nice view, great hunting, open land and some trees, all blacktop road frontage. Electric and gas available 717-549-8152

GETTYSBURG: 46A working farm, fine old stone, brick house, 4BR, apartment, good barn, sheds, pond, \$143,000. Maurice Weaver, Agent: 717-677-8507. COLDWELL BANKER REALTORS, Gettysburg.

Howard County, Maryland, 100 acres, barn, equipment shed, two houses, potential horse farm 301-442-2144.

If you are planning to buy or sell your farm, call Lawrence Stouffer, our farm manager at Heyworth Realty, 301-733-3701 or 717-597-2584. We have qualified buyers.

If you're looking for a farm, land or have any other real estate needs, you'll find what you want in the Real Estate classifieds. 717-394-3047 or 717-626-1164.

Modern operating dairy in Newberry, South Carolina. Rolling herd average 18,300, free stalls, machinery & cows included. 803-276-2895.

NEAR COCHRANVILLE: 27.4 acres, wooded and open, beautiful building site, southern exposure. \$3,500/per acre. COATES REALTOR. 717-291-1542. After hours 717-354-9534

NEW YORK DAIRY FARM: \$150,000. 4 silos, stanchions for 50 head w/modern farmhouse. Sandy loam soil, 110 acres, more to rent for \$30 per acre. 2nd slip in house unit for additional monies. Contact: Willard Pengelly, Managing Broker, HARRIS WILCOX, INC. 716-494-1880.

NORTH OF ROUTE 30 NEAR ROUTE 10: 38.6 acres wooded ground, nice building site. \$3,000/per acre. Owner Financing. COATES REALTOR. 717-291-1542. After hours 717-354-9534

PEACE AND SERENITY 75± acre farm, 56 tillable. Privacy in a 100 yr. old modernized 4BR farmhouse. Lg. bank barn, 2BR summer house. \$135,000. Catawissa, 1 1/2 hrs. N. of Lancaster. Call collect (Massachusetts) 413-253-2192, eves. & weekends.

Real Estate wanted commercial residential use existing business acreage and concrete or steel outbuildings a must. Reply to: Lancaster Farming, P.O. Box 366 K-68, Lititz, Pa. 17543. 609-398-8617 or 609-398-9820

Snyder Co. 33A, 10 clear. Secluded, nice. S.M. Troyer, Box 223, Mt. Pleasant Mills, PA.

SOMERSET CO., PA FOR SALE DAIRY FARM COMPLEX 2 mis. SW of Somerset, 107 free stall barn, 80x165', heifer barn 30x108', machine shed 40x80', 1800 ton maintenance free concrete trench. Plus Brick ranch style home w/attached 2 car garage Buildings of new type construction on 46 acres prime developing land. All for \$276,000 Also milk store for lease 400 acres of land For Sale or Rent. Phone 814-445-6841 Eves 814-445-2227

For Sale: 60 acre Berks County poultry farm All or part. Excellent income. 215-562-7776.

FREE CATALOG! Describing numerous PA farms, camps, acreage tracts, cottages, homes and businesses. Write Dept. LF, WEST REAL ESTATE AGENCY, INC., 5528 William Flynn Highway, Gibsonia, PA 15044 1-800-922-1235

GENERAL DAIRY FARM Bradford Co., PA. 219 acres, 2 homes, several barns, 3-car garage, out-buildings, 80-acre fenced pasture, 130 tillable acres, 3 apple orchards, all mineral rights, equipment included in the sale \$150,000. No. D-7814 Jerome & Betty Kipp, R.E.S., 412-363-2110 WEST REAL ESTATE AGENCY, INC.

Wanted Operating poultry farm, layers. Other farms considered. Must be profitable. Owner financing required. Need two years experience to get permanent financing 717-755-4045.

WYOMING COUNTY Operating dairy farm, fully equipped, 474 acres, \$790/per acre, approx 600 acres available, will divide, terms available Call Today. Ask for Amy Century 21 Rachels Real Estate, 74 E. Tioga St., Tunkhannock, Pa 18657. 717-836-3457

1,000 Island Area: Nice 400A farm on Lake Ontario, 2 sets of excellent bldgs, 1,000' shore frontage. Dairy-Beef-Horses-Whatever. Owner Financing. 315-649-2455. John G. Weiler, Three Mile Bay, NY 13693.

200 acres, 2 barns, 5 bedroom insulated home, grainary, 3 car garage, wood shed, poultry buildings, 2 ponds, creek, 80 acre woods, 80 tillable, 40 pasture, beautiful views, privacy, convenient \$110,000. No reasonable offer refused! Bradford County, Pa. ENDLESS MT. REAL ESTATE, CO. 717-596-3228

23 Acres woodland, Huntingdon Co., \$750 per acre. 717-653-1728

45 acre farmette, 3 bedroom house completely remodeled barn & other buildings in good condition Price Reduced. Eldon E. Funk, R.D.2, Newville, Pa. 17241. 717-423-6416

572A dairy farm, Jefferson Co., Georgia. (2) 70' silos, 100' bunk feeder milking parlor, 6 grain bins, 2 large machinery sheds, hay storage shed, 2 homes. Land joins Menonite school & church \$550,000. 912-625-7309.

About 150 yr. old log house, good condition Must be moved. 717-362-9233

FOR SALE BY OWNER: 8 acres, 2 BR house, 1 car garage, spring water w/pump. Northern Potter Co., PA. Hunting and fishing area. Inquire by mail or in person only. Mrs. Hazel Steadman, P.O. Box 104, Genesee, PA 16923.

FOR SALE BY OWNER: 10 acre farmette, (2) 2-story 44x300 broiler houses, 1 with automatic ventilation system, (1) 500 head fattening unit, 4 acres tillable with pond for irrigation. 1983, 14x70 mobile home Berks Co. 717-933-8044.

FOR SALE: 167 acres woodland, excellent hunting and fishing in Parkman, Maine. \$100 an acre. 215-944-0247

For Rent: Dairy barn w/pipeline and etc., dry cow barn. 717-758-6632 or 717-758-2073

For Rent: 57 acres of meadow, good fences and fresh water. Will go in shares. Jonestown area 717-862-3731 or 865-4932.

For Sale: Bradford Co Farm 181.19 acres, 42 stanchion barn, silo, milkhouse, 9 RM house. Owner Financing. \$139,000. 717-297-3923