



**Seeding,
Weeding
and mulch
more**

For the avid gardener

CREAMERY - With the spring-and-summer planting season here many gardeners will be bringing plants home from the local nurseries and garden center.

Most plants will adapt to the mild condition changes of your garden. The more mistakes you make, however, the harder it will be for your plants to survive, warns County Agent Paul Reber. If you make one or more of the following mistakes when you select, plant or care for your new plant, you might not be satisfied with the outcome:

- Buying the wrong plant. The problem is usually not the plant but the location of the plant in your garden or landscape: "All too often gardeners purchase plants

because they are attractive or unusual, not because the plant has a chance to survive under the conditions of their garden," Reber says, "A similar problem occurs when the plant grows too large for landscape design."

- Setting the plant too deep. People tend to set plants too deeply into the soil. This will cause problems with most plants. Bare-rooted plants can be slightly lower with little harm. Plants that are container-grown and balled or burlapped should be slightly higher in the hole than the surrounding soil line.

- Setting a dry plant. Most container grown plants are produced with an artificial material around their root system.

When this high organic material dries out, it can be very difficult to wet again. If dry plants are not watered well, the drying process continues in the hole and the plant dies.

- Forgetting to water plants. Newly set plants need a thorough watering, even if the soil around them is moist. The first watering after planting will settle the soil and remove any air pockets which often reduce root expansion into the backfill soil.

- Digging a small hole. Many gardeners will make a planting hole just large enough for the root ball. Even if these plants are given optimum care, they seldom grow properly or survive very long. A

hole one and a half times the root diameter is considered ideal.

- Preparing backfill soil. The horticulture industry is beginning to get away from amending backfill soil with large amounts of organic matter. Bare-root plants can be backfilled with good soil that came from the hole. Container-grown and balled or burlapped plants still should get some organic matter in the backfill soil to produce a transition between the soil around the root ball and the site's soil.

- Using too much fertilizer. The new roots that a plant sends out can be easily burned by the salt in fertilizer. Unless the soil tests low in a specific element, most plants

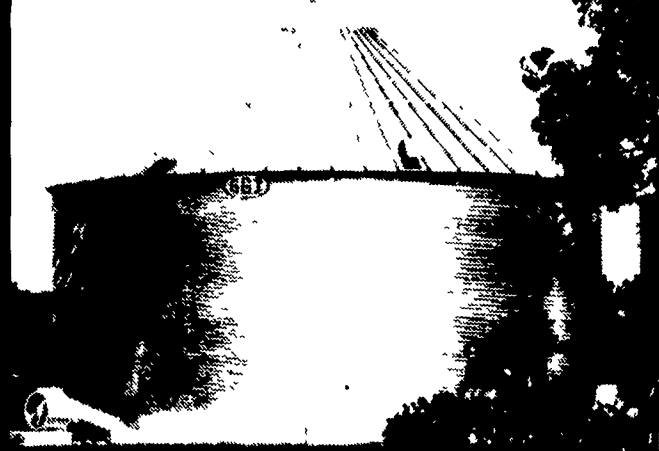
will establish very well with light applications of fertilizer or no fertilizer at all.

- Forgetting to water plants in the summer. First-year plants need extra water during their period of establishment.

- Forgetting to mulch. A mulch 3 to 4 inches deep will keep the soil moist, hold down weed growth and give the planted area a better appearance.

"There is no positive way to assure success with every planting," Reber concludes. "But if you avoid the above mistakes before, during or after planting, you garden will have a better chance for success."

**YOUR EQUIPMENT CENTER FOR
POULTRY, GRAIN, HOG & LIVESTOCK EQUIP.
CHECK WITH US FIRST ON
GSI NEW AIR DRYING SYSTEM**



**WE ARE A
GSI FACTORY
WAREHOUSE**

*OUR PRICES
ARE
ALWAYS GOOD*

**GSI Grain Bins
& Accessories**

**DAYTON MOTOR
SALE**



Farm Duty,
Totally Enclosed

	Reg.	SALE		Reg.	SALE
1/4 HP	79.99	'63"	1 1/2 HP	159.99	'127"
1/2 HP	99.99	'79"	2 HP	219.99	'175"
3/4 HP	119.99	'95"	3 HP	249.99	'199"
1 HP	139.99	'111"	5 HP	359.99	'287"

1 Yr. 100% Warranty



24" CIRCULATING FAN
w/Mounting Bracket,
Cord, Switch, Motor
And Grill

- 1-5 Fans \$99.99
- 6 or More Fans \$93.99

Galv. 36" FAN 1/2 H.P.
w/Energy Efficient Motor

Reg. \$359.95 Sale **'289"**

Alum. 36" Shutters

Reg. \$90.00 Sale **'69"**



American Cool Air Member of AMCA
Also Available: Replacement Motors
For Old Fans

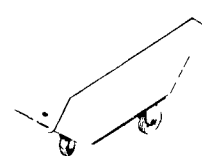
*This Week's
Special* 1/2 H.P. Energy Efficient
FAN MOTOR Reg. \$139.95 SALE **'99"**

FEED CARTS
Polyethylene Cart

800 Lb. Cap.
Reg. \$241.00

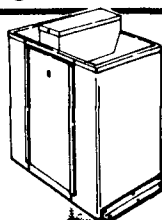
Sale **'189"**

Galv. Cart 800 Lb. Cap.
Reg. \$189.00 Sale **'149"**



Cattle Waterers
For Up To 80 Head
w/Electric Heat

Reg. \$226.84 SALE **'189"**



**Heavy Duty
GRAIN GATE SALE**

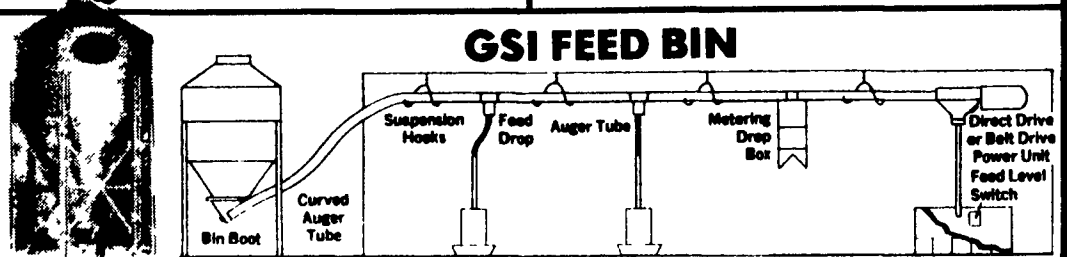
For Dump Trucks, Etc.

	Reg.	SALE
9"x9"	15.70	12.49
9"x18"	17.35	13.95
12"x21"	19.30	15.39
15"x34"	42.90	33.95



- Heavy Gauge Steel
- Easily Installed
- Reasonably Priced

GSI FEED BIN



**KANE
2-Hole
Plastic
CREEP
FEEDER**

Reg. 9.29

SALE **\$7.99**

**TRUCKLOAD SAVINGS ON
FLAT TOP A-1 WOVEN WIRE FLOORING**



Last Longer Because It's Made
Of Galvanized, Heavier-Gauge,
Lower Carbon Steel Wire
USA Made

Exclusively Mfg. by Delphi

IN STOCK
5x7 & 4x8

\$1.49 Per Sq. Ft.

**TREAT YOUR
WATER SUPPLY
AND
INCREASE
YOUR PROFIT**



If your herd's water supply has high levels of nitrates, sulfates and/or bacteria your cows can not reach their full potential.

**WE SPECIALIZE IN WATER TREATMENT
ON DAIRY FARMS.**

Our water conditioning methods reduce those robbing nitrates, sulfates, and bacterial to proper levels - resulting in improved herd Health - Milk Production - Butterfat.

**YOU TEST THEIR FOOD—
WHY NOT THEIR WATER?**

Contact us for information on our proven
installations, and a test of your water supply.

**MARTIN
WATER
CONDITIONING**

740 EAST LINCOLN AVE.
MYERSTOWN, PA. 17067

PHONE 717-866-7555

★ FULL LINE PARTS DEPARTMENT - WE SELL, SERVICE & INSTALL ★

EMHERR

EQUIPMENT, INC.

Serving The Industry For
Over 20 Years

RD 1, Rt. 272S., Herrville Rd.,
Willow Street, PA 17584

Phone: 717-464-3321
or Toll Free: 800-732-0053