

Pork Prose

(Continued from Page E2)

	Protein (Min %)	Fiber (Max %)	Moisture (Max %)
Soybean meal, expeller	42.6	6.2	10.0
Soybean meal, solvent	44.0	7.3	11.0
Soybean meal, dehulled sol	48.5	3.9	10.0

Are samples always within these limits? No. And the problem seems to be growing worse. At a recent meeting of southern feed cooperatives which I attended, several representatives indicated soybean meal quality has been a problem. The biggest complaint is that protein levels have not been meeting the minimum. High calcium levels were also mentioned.

At North Carolina State University, nearly 40 percent of the soybean meal samples tested in 1976 were deficient in moisture, protein or fiber composition. By 1983 the violations had grown to 83 percent.

At the Delaware Department of

Agriculture, over 25 percent of the samples tested in the last three years had excess fiber. Twenty-five percent also did not meet protein minimums.

What should this mean to you? Ideally, every load of soybean meal should be tested. If, for example, the protein is too low, you can adjust the ration accordingly to avoid deficiencies. If it's above the minimum stated, you can pull some protein out of the feed formula and save a few bucks.

In summary, soybean meal is your best buy under most market conditions. It's easy to handle and hogs perform well on it. But to know what your getting, have it tested.

MINNEAPOLIS, — Research indicates that supplemental biotin is beneficial for breeding swine, but the need for certain vitamins and minerals for weaning pigs and developing gilts is questionable, according to Dr. E.T. Kornegay, professor of animal nutrition at Virginia Polytechnic Institute and State University.

Speaking to more than 600 nutritionists, scientists and feed industry personnel at the 33rd Annual Pfizer Research Conference here, Dr. Kornegay said, "Supplemental biotin apparently improves reproductive performance, hair coat conditions and foot health of breeding gilts and sows. Also, preliminary research suggests that injection of folic acid during gestation will maintain the serum folate levels necessary for

optimum reproduction."

Dr. Kornegay also reported that the need for supplemental vitamin C in weaning pigs appears unlikely now. Feeding high levels of calcium and phosphorus to prevent structural unsoundness and lameness also is questionable, and slight deficiencies, or excesses of salt in swine diets is unlikely to affect calcium-phosphorus utilization or bone mineralization.

"Although added selenium is necessary for weaning pigs, it use could be a problem," Dr. Kornegay said. "Several laboratories have established selenium toxicity levels between 4 and 8 parts per million."

Dr. Kornegay also reported that fiber sources for swine vary greatly in composition and feed

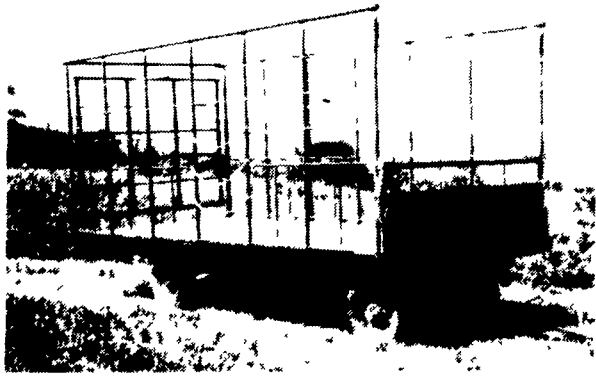


E.T. Kornegay

value, and that research indicates the effect of fiber on mineral use by swine depends on the type of fiber and the mineral required.



BEST BUY of the YEAR



- 6" Steel Main Beam
- 2" Vertical Tubing Drilled so that the 1" Horizontal tubing extends Full Length of Wagon
- Double Welds give added Strength and Greater Structural design
- Lighter Weight with this Design
- Front-Side and Rear Loading and Unloading
- 2"x8" Flooring and 2"x6" Cross Beams - All Pressure Treated Lumber - 30 Year Guarantee
- Available in 8 ft. High and 8 ft. wide and 16, 18 and 21 ft. lengths
- ALSO Available in "Do-It Yourself Kits"

FOR FURTHER INFORMATION, CALL YOUR LOCAL DEALER:

**LOST CREEK
IMPLEMENT**
Oakland Mill, PA
717-463-2161

A.B.C. GROFF
New Holland, PA
717-354-4731

**CHAMBERSBURG FARM
SUPPLY**
Chambersburg, PA
717-264-3533

**VALLEY IMPLEMENT
SALES**
Harrisonburg, VA
707-434-9961

WALTER G. COALE, INC.
Churchville, MD
301-734-7722

**OXFORD GREENLINE,
INC.**
Oxford, PA
215-932-2753

**MELROSE FARM
SERVICE**
Greencastle, PA
717-597-3138

KELLER BROS.
Lebanon, PA
717-949-6501

**NORTHEAST
DISTRIBUTING**
West Clifford, Pa.
717-222-9020

ACE-JURISTA, INC.
Tunkhannock, PA
717/836-2610

DUNKLE & GREIB
Mill Hall, PA
717-726-3115

COVERT & SONS
Neshanic, NJ
201-369-5241

Manufactured By

COUNTY LINE WELDING, INC.

R.D. #2, Box 8
Newburg, Pa. 17240
717-423-6794

Swine nutrition findings

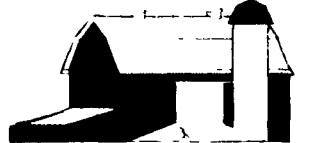
Salute to Dairymen



WALTER and JACKSON, INC.
LUMBER, MILLWORK & BUILDING MATERIALS



RESIDENTIAL



AGRICULTURAL

Serving the Area's Building Needs Since 1872

WE DELIVER

- Wheeling Painted Channel Drain
- Pressure Treated Yellow Pine
- Pole Barn
- Trusses & Wall Components
- Insulation
- Aluminum & Vinyl Siding
- Bird Roofing
- Complete Line of Hardwoods
- Design & Plan Services
- Anderson & Marvin Millwork
- Glidden Paint
- Brammer Kitchen Cabinets
- Paneling & Ceiling Materials

M-F 7 AM-5PM
SAT 7 AM - 12 NOON



E. GAY ST., CHRISTIANA, PA 17509
215-593-5195 / 857-2613 / 717-786-7282
FARMERSVILLE RD., HINKLETOWN, PA 17557
717-354-4911