



Chester County DHIA Monthly Report

April, 1985

The cow with the high fat was owned by Vernon Guest & Son

The cow with high milk was owned by Bright Meadows

Rolling Herd Average

Owner	Brd	No Cows	Days In Milk	Lbs Milk	Lbs Fat
Melwood Farm	3	36	5	90	6
H & R Mason	3	106	9	90	1
Ardrossan Farms	1	124	4	86	4
Robert E Pepple	3	61	4	86	4
George P Lamborn	3	34	7	88	9
Dunwood Farm	3	55	0	88	5
Jonas B Stoltzfus	3	46	9	87	4
Abner R King	B3	37	0	86	0
Joseph Lusby	B3	44	0	86	6
John S Stoltzfus	3	75	8	88	5
Chris & Ches Stoltzfus	3	55	5	89	0
Bright Meadows	B3	70	8	83	3
James V Yale	B3	65	3	91	4
Paul King	3	72	9	91	6

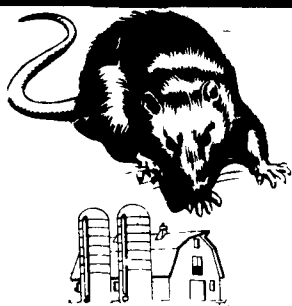
Vernon Guest & Son	B3	92	2	87	7	17	694	705
Kulp Bros	G3	87	2	87	9	18	073	704
Breck A De Farm	3	78	5	86	6	18	594	704
Floyd Miller & Sons	B3	67	2	87	5	18	508	704
Willowland Farm	3	59	1	88	9	18	717	702
Ridgela Farm	3	95	3	87	5	17	583	697
David & Dawn Windle	3	49	7	86	0	18	797	694
Round Top Farm	B3	80	8	82	4	19	777	689
Timberview Farm	3	57	2	87	9	17	058	688
Jefferson D Yoder	3	67	9	87	1	17	986	687
Herman Stoltzfus	3	54	1	85	0	18	274	685
Glen H Freese	3	70	9	85	5	19	166	683
Hargret Dairy Inc	B3	52	7	87	7	18	256	683
Pei Valley Farm	B3	69	7	88	8	17	703	683
Maplesway Farm	3	65	4	89	8	17	675	683
Merle J King	B3	81	0	88	8	18	161	682
Dale Hostetter	3	48	6	87	0	18	721	681
Elmer A Mast	3	84	1	86	0	17	295	680
David E Weaver	3	94	3	86	4	17	470	678
J Harold Bare	3	65	9	82	7	17	845	674
Mast Stoltzfus	3	45	1	88	6	17	874	674
Mark & Melody Stoltzfus	B3	49	5	85	3	17	272	673
Swan View	3	58	6	87	0	18	224	672
Jesse E Lair	G3	87	0	87	6	18	794	672
David K Stoltzfus	B3	45	6	83	7	17	282	669
Charles J Moore	B3	48	7	85	4	18	984	668
Harold K Kulp	B3	77	4	88	0	17	564	667
Mrs John B Hannum 3D	B3	86	0	88	6	18	274	667
Donald M Horning	B3	46	6	86	3	17	976	665
Samuel B Acker	B3	184	2	89	3	16	791	664
Kenneth Umble	3	60	6	86	1	17	501	663
Leon D Kurtz	3	42	0	84	0	18	055	662
Arthur D Hershey	3	50	4	85	4	17	576	661
Richard Hostetter	B3	47	1	83	6	17	202	659
Benjamin K Kauffman	B3	41	3	90	2	17	932	655

Indicates 3 Times A Day Milking

Owner Name or No	Brd	Age	Days In Milk	Lbs Milk	% Fat	Lbs Fat
Vernon Guest & Son						
Trish	3	3	9	305	21	794
Jeanett	3	3	7	305	18	494
Ben Beiler & T Barlow						
Peace 30	3	4	9	305	24	378
H & R Mason						
153	3	3	5	305	23	837
148	3	3	8	305	22	035
137	3	3	8	305	21	203
152	3	3	5	305	18	505
139	3	3	8	305	21	652
150	3	3	3	305	18	611
Maplesway Farm						
Robin 16	3	3	5	305	23	027
George P Lamborn						
Topsy	3	4	7	305	21	922
Agnes	3	3	6	305	23	917
Floyd Miller & Sons						
44	3	4	4	305	21	461
Melwood Farm						
Betty	3	7	1	305	20	058
Rocky	3	9	1	286	20	961
John S Stoltzfus						
Taco	3	6	11	305	22	203
Breck A De Farm						
130	3	2	11	305	19	495
Joseph Lusby						
Katie	3	3	10	305	22	140
Christa	3	3	7	285	19	733
Pei Valley Farm						
18	3	4	1	305	19	396
Herman Stoltzfus						
Gerry 21	3	4	11	305	20	807
Fawn 1	3	5	8	305	22	292
Bright Meadows						
79	3	6	8	305	25	152
Kenneth Umble						
Rosebud	3	3	11	305	21	246

(Turn to Page D18)

ATTENTION FARMERS... FREE ESTIMATES ON RODENT CONTROL



RODENTS carry diseases which can endanger the health of your poultry flocks. Your business is raising them. Ours is protecting them.

We Specialize In Sanitizing And Disinfecting Poultry Houses

Lancaster, PA
397-3721

Lewistown, PA
248-0983

State College, PA
237-7607

Ehrlich

Since 1928

Pest control is too important to trust to anyone else

FISHER'S PAINTING

- ALL TYPES OF INTERIOR & EXTERIOR PAINTING
- SANDBLASTING
- ROOF COATING
- RESTORATION & WATER PROOFING ON STONE & BRICK BUILDINGS

We Specialize In Farm Buildings, Feed Mills, Water Tanks, Etc. With Aerial Equipment

If you need good paint, roof coatings or paint accessories at reasonable prices, stop at our new outlet store.

We buy in large quantities

STORE, SHOP AND OFFICE LOCATED IN OLD STONE BARN AT:
4056 A Newport Road
Kinzers, PA 17535
(Across From Pequea Valley School)
717-768-3239

Protects livestock



keeps barns clean & sanitary

MARTIN'S BARN-DRI

Use in any stable or animal pen that has a tendency to become slippery when wet

- Cow Stables and Runways
- Hog Pens
- Sheep Stables
- Dog and Cat Kennels
- Chicken Houses
- Other damp areas

See your local dealer

MARTIN LIMESTONE INC.



Just Arrived...Trailerload

Computer Balance Available

SIZE	REPLACES	COST
P155/80R13	—	34.25
P165/80R13	AR78-13	38.00
P157/80R13	BR78-13	41.00
P185/80R13	CR78-13	42.50
P185/75R14	CR78-14	43.50
P195/75R14	D/ER78-14	46.50

SIZE	REPLACES	COST
P205/75R14	FR78-14	47.80
P215/75R14	GR78-14	51.50
P205/75R15	FR78-15	50.00
P215/75R15	GR78-15	51.75
P225/75R15	HR78-15	55.50
P235/75R15	LR78-15	58.75



★ FREE MOUNTING ★ STATIC BALANCE ★ TUBELESS VALVES

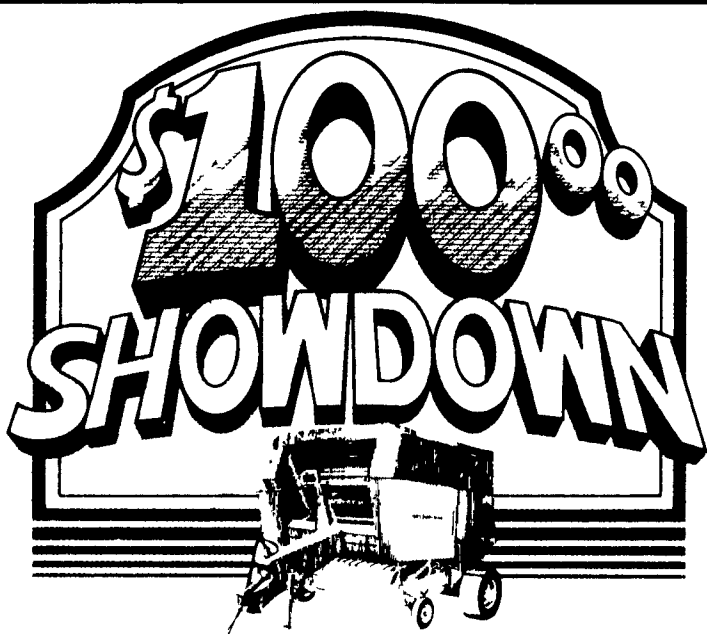
Alignment By Appointment... Keep Those Tires From Wearing Uneven

Mon. & Fri. 7:30-9; Tues., Wed., Thurs. 7:30-5; Closed Saturdays

HURST TIRE SERVICE

1 Mile West of Blue Ball on Route 322

(717) 354-4931



Ask us to demonstrate a Sperry New Holland round baler. If after that demonstration you buy a round baler... even a competitive unit... Sperry New Holland will send you a check for \$100.00.

Hurry—offer expires September 30, 1985.

KELLER BROS.

SINCE TRACTOR CO. 1921

PARTS ★ SALES ★ SERVICE

R 7 Lebanon
Pa 17042
Rt 419 1 mile West of
Schaefferstown
Buffalo Springs
Lebanon County
717-949-6501
NEW TOLL FREE NO.
1 800 822 2152

SPERRY ★ NEW HOLLAND