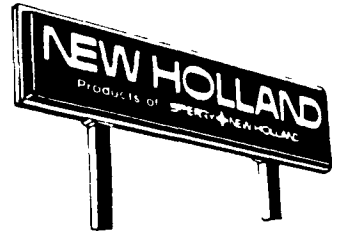
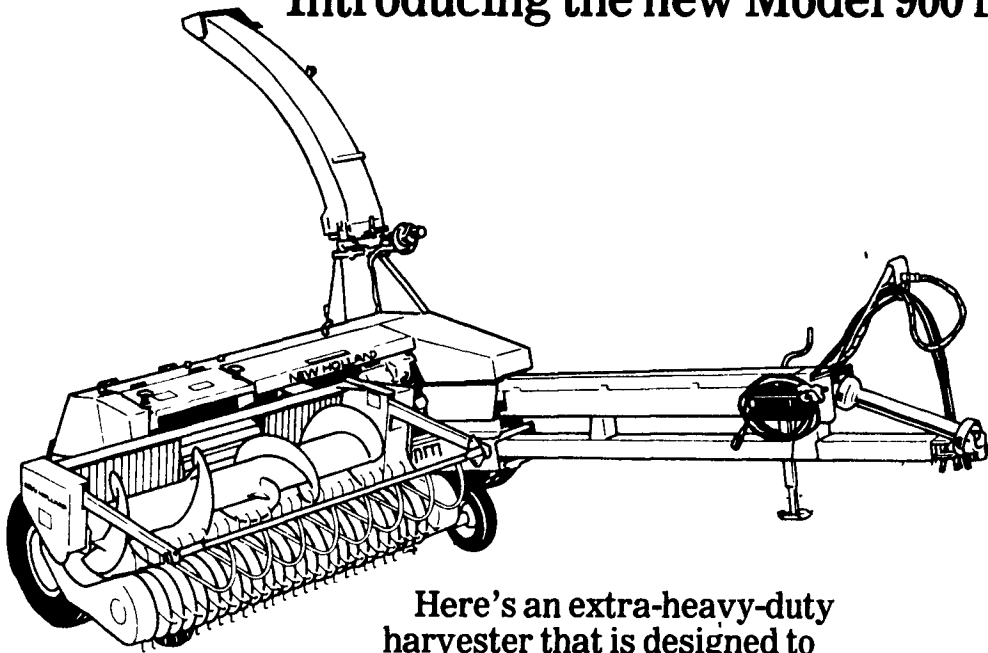




EXTRA CAPACITY. EXTRA PROTECTION.



Introducing the new Model 900 from Sperry New Holland



Here's an extra-heavy-duty harvester that is designed to meet the new needs of today's big crop producers. With the Model 900 you can hitch up to more horsepower and move into your crop with confidence.

Powerful Performance

Performance starts with the 1,000 rpm driveline. It's rated at 190 PTO or 210 tractor horsepower. The massive twelve-knife cutterhead is 21 inches in diameter. Hardened alloy knives have tungsten edges to reduce knife-sharpening chores.

Energy-Saving Efficiency

You get smoother feeding and controlled chopping, thanks to the new crop-control design, which allows the feedrolls and cutterhead to work as one unit for minimum material loss and low power needs. Under-knife baffles and auger baffles keep your crop flowing after it is chopped to reduce cutterhead carryover.

DON'T BE FOOLED BY IMITATIONS -
NO OTHER FORAGE HARVESTER IS
EQUIPPED WITH SPERRY NEW HOLLANDS
EXCLUSIVE METALERT II

HERE'S HOW METALERT II WORKS

1. Both front feedrolls are made from stainless steel. Housed inside the lower feedroll are a magnet and sensor. The magnet emits a constant magnetic field between the two front feedrolls.
2. When stray metal disrupts the magnetic field, the detector immediately sends a signal to a solenoid which releases a spring-loaded stop pawl into the ratchet

wheel. The feedrolls and crop-head drive stop immediately, before the metal reaches the cutterhead.
3. Electric remote controls have built-in alarm light and horn to warn when a detection is made and feedrolls are disengaged. The feedroll control switch is used to reverse the crop.

Feature Flexibility

The new Model 900 comes to you with a greater range of feature flexibility so that you can choose the equipment that is exactly right for your operation.

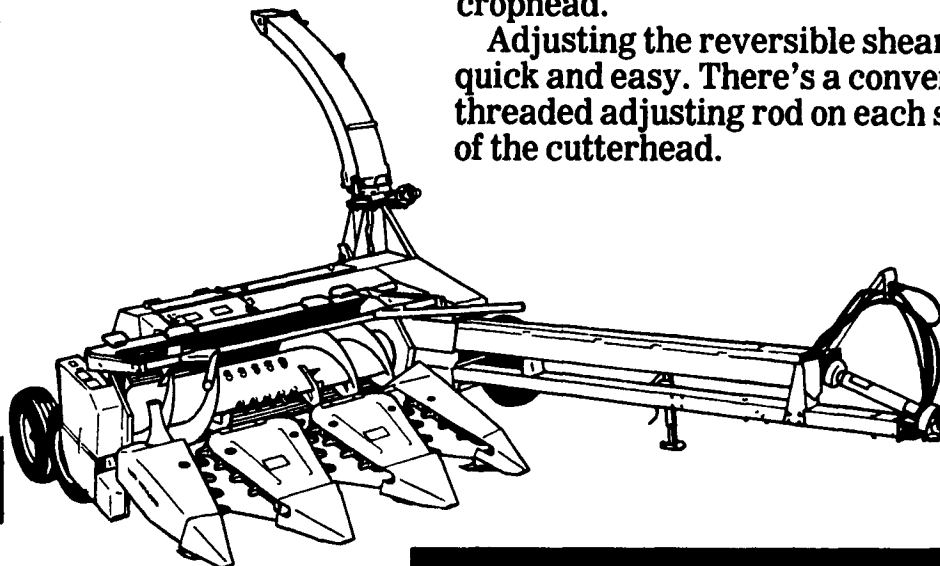
Important practical options include:

- Hydraulic swing tongue
- Slip clutch feedroll protection
- Two-speed blower
- Electromagnetic clutches on gearbox
- Tandem wheels
- Truck rims
- Electronic metal detector

Maintenance Made Easy

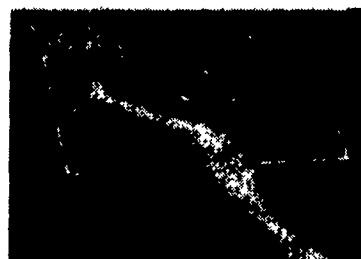
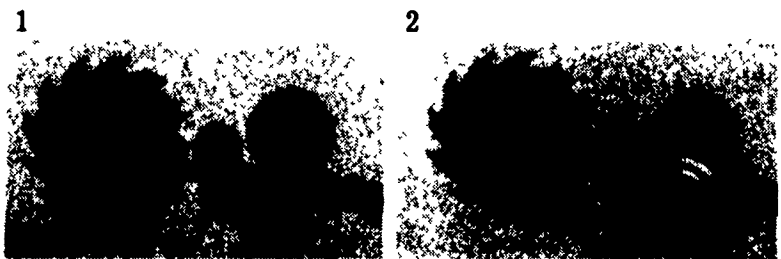
Maintaining the Model 900 in top chopping condition is easier than ever before. The flip-up feedroll design allows easy access to the shearbar and scraper without removing the crophead.

Adjusting the reversible shearbar is quick and easy. There's a convenient threaded adjusting rod on each side of the cutterhead.



Peace-of-Mind Protection

METALERT® II is a new generation electronic metal detector that gives you a five-year guarantee against cutter-head "blowups" caused by ferrous metals. More important, it keeps dangerous bits of iron and steel out of your feed.



After the metal is removed, the system resets automatically.

See your Sperry New Holland dealer and ask to see the new Model 900. You won't find a forage harvester that works as well for you.

© Sperry Corporation