

Gavel comes down on Thomasville Auction

BY JOYCE BUPP
Staff Correspondent

THOMASVILLE — The final crack of auctioneer John Frey's gavel on the sales box marked the end of an era in York County last week.

After nearly 40 years of selling livestock, Thomasville Livestock Auction, Inc., a Wednesday evening agriculture tradition, swung its heavy wooden cattle gates closed for good.

But, waiting in the wings to open at the auction site on May 15 is Weikert's Livestock Buying Station. Owned and operated by

Robert W. Weikert, of Fairfield, the new private-purchase livestock-hauling business marks the first time an auction in southcentral Pennsylvania has been converted to a direct-buy establishment.

"It's a trend in the West," says Weikert, who's been a livestock buyer since the age of 14. "Cattle will go direct from here to slaughter."

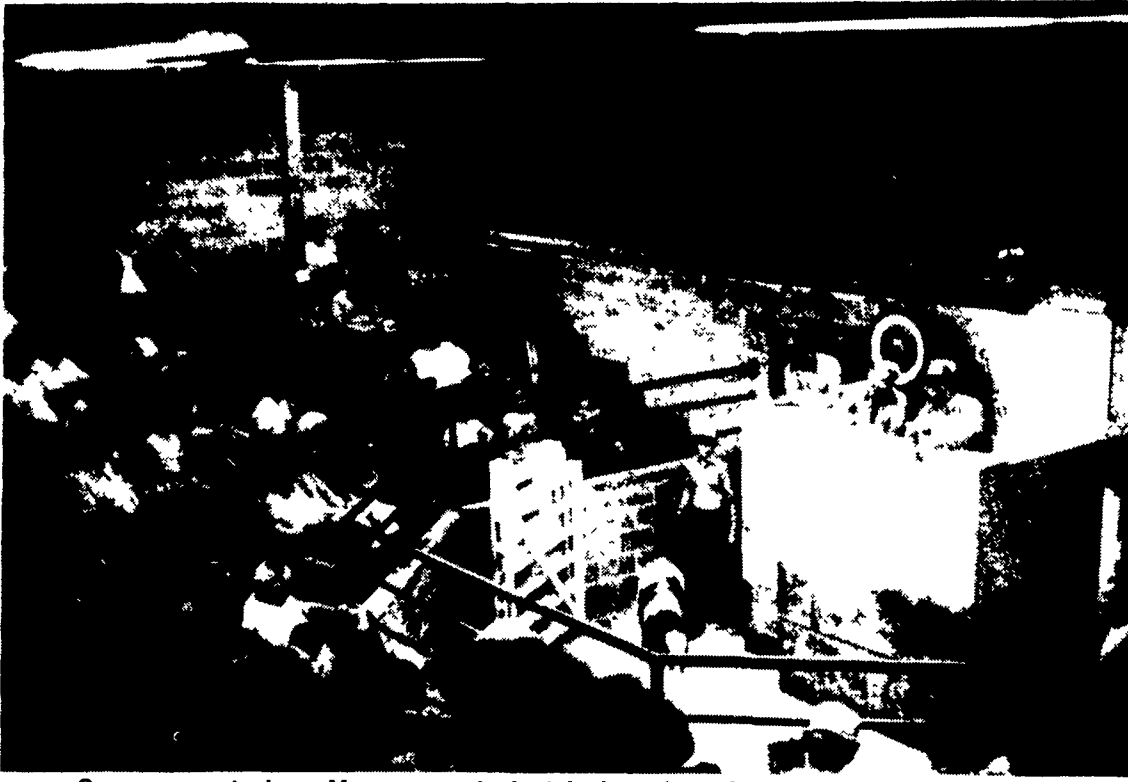
"Farmers can bring their cattle and calves in, we'll weigh them at once, and give them a check immediately. And, there's no commission," he explains.

While the direct-purchase business will open initially only for cattle, Weikert plans an announcement in the near future on a date when hog purchases will be added.

Weikert's Livestock Buying Station will be open every Wednesday, from 8 a.m. through 6 p.m.

Experienced at private livestock trading, the family has operated a buying station at their Fairfield home since 1957. Weikert's two sons, Jeffrey and Todd, are also experienced buyers, and will be assisting in operating the

(Turn to Page A19)



Some come to buy. Many came to just look and reminisce as livestock processed through the Thomasville Arena in the closing hours.



Pickups and tractor-trailers packed the parking lot at Thomasville Auction Wednesday evening as long-time auction goers turned out in force for the final nostalgic night at this York County ag institution.

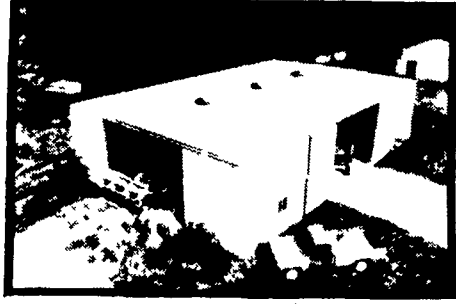


For one final time, auctioneer John Frey sang bids and the gavel cracked against the worn sales box, as 40 years of York County ag history came to a close.

BUILDINGS BY

BUTLER

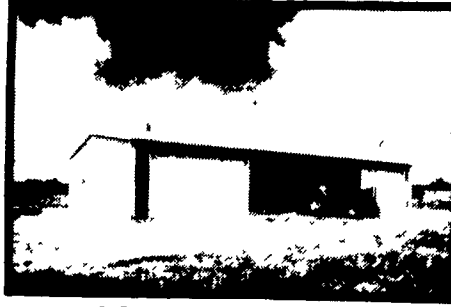
BUTLER WANT



FARMSTED® II



SHOP - STORAGE - GARAGE



AG-MASTER® 2:12

Buy The Best
Buy BUTLER

BUTLER QUALITY
NEVER CHANGES -

BUY OR LEASE

Full Line Of Insulation, Roll or Board
See Your Butler Agri-Builder For All Your Insulation Needs

NO
BUT
WE WANT
BUSN

Ask Your Agri-Builder
MANY OPTIONS... D
Let Us Do It For You

BUTLER MFG. CO.
Attn P E Hess

BUTLER

P O Box 337, Oxford, PA 19363

ASK ABOUT OUR
NEW DEALER PROGRAM
MAIL IN COUPON TODAY

Name _____
Address _____
County _____ Zip _____
City _____ State _____
Phone _____
(Include area code) LF

See Your
Agri-Builder
Before
You Buy

GRANT'S CONSTRUCTION
CO., INC.
R.D. #1
Buffalo Mills, PA 15534
PH 814-842-6540

C & M SALES INC
R D #1
Honesdale PA 18431
PH 717 253 1612

GOMPF CONSTRUCTION
CO, INC
1841 Jerry's Road
Street MD 21154
PH 301 692 5350

MYERS BUILDING
SYSTEMS, INC
R D #1 Box 161
Clear Spring MD 21722
PH 301 582 4200

NAZARETH BUILDING
SYSTEMS, INC
P O Box 47
Nazareth PA 18064
PH 215 837 7700

TRI COUNTY
AGRI-SYSTEMS
R D #1 Box 55
Swedesboro, NJ 08085
PH 609 467 3174

MATTSON ENTERPRISES
1605 Mt Hope
Burlington NJ
PH 609 388