

Public Auction Register

Closing Date Monday 5:00 P.M.
of each week's publication

FRI. JULY 19 - 5:30PM
41. Lancaster Turkey Hill
Gap Auction. Antiques & Hshld. Goods sold at every bridge. Ira Stoltzfus & Son, Auctioneers.

SAT. JULY 20 - 9AM
Hshld. Goods, Antiques. 1531 Manheim Pike, Lancaster, PA For Clyde Keener, C.H. Wolgemuth & Sons Auctioneers.

FRI. JULY 26 - 5:30PM
Gap Auction. Antiques & Hshld. Goods sold at every auction. Located off Rt. 41, Lancaster Turkey Hill Mint Mkt., cross RR bridge. Ira Stoltzfus & Son, Auctioneers.

FRI. JULY 19 - 6:30 PM
Feeder Pigs & Feeder Cattle Keister's Middleburg

SAT. JULY 20 - 9AM
Hshld. Goods, Antiques. 1531 Manheim Pike, Lancaster, PA For Clyde Keener, C.H. Wolgemuth & Sons Auctioneers.

FRI. JULY 26 - 5:30PM
Gap Auction. Antiques & Hshld. Goods sold at every auction. Located off Rt. 41, Lancaster Turkey Hill Mint Mkt., cross RR bridge. Ira Stoltzfus & Son, Auctioneers.

SAT. JULY 27 - Geet Ministries. Martin Sale Barn Steve Petersheim, Auctioneer.

SAT. JULY 27 - 11 AM
Horse Sale Keister's Middleburg.

AUGUST

FRI. AUG. 2 - 9 AM Farm Equipment. New Holland Sales Stables, Inc., Auctioneers.

FRI. AUG. 9 - 1:30 PM
Public Auction of PA State Graded Feeder Pigs Carlisle Livestock Market Inc. Exit 12 off I-81. 717-

Dairy and Livestock Sales

249-4511.

SAT. AUG. 10 - 12 Noon
Sixth Prince Plaudit Production Sale. Rimwood Ranch, Strattonville, PA. Appaloosa Horses. Dave Seahman, Owner. Red Carpet Horse Sale, Inc.

FRI. AUG. 16 - 6:30 PM
Feeder Pigs & Feeder

Cattle. Keister's Middleburg.

SAT. AUG. 17 - 9 AM
Annual Consignment Sale of Kutztown Fire Co. at the Firehall 1 1/2 mi N. of Myerstown on Rt. 645 Local Auctioneers. Henry Brubaker, Chairman: 717-866-2702.

SAT. AUG. 31 - 11 AM
Horse Sale. Keister's Middleburg.

SEPTEMBER

FRI. SEPT. 6 - 7 PM
Holstein Promotion. New Holland Sales Stables, Inc., Auctioneers.



ABSOLUTE PUBLIC AUCTION

Everything Selling To The Highest Bidder!

Fine Antiques, Household Goods, Tools

Located at 35 Corry Avenue, Lancaster, PA

SATURDAY, MAY 25, 1985

At Precisely 9:00 A.M.

Very Good Penna. Walnut High Chest of Drawers, 5 Lower and 3 Upper Drawers, Reed Columns, Cornice Molding, Oval Brass Pulls, French Feet, Karastan Oriental Rug with Flower Design Multi-Color, Room Size, 3 Karastan Oriental Hall Rugs, 1 Sarouk Oriental Hall Rug, Walnut (Hardwood) Secretary Book Case Desk with Compartments with Secret Drawer, 3 Lower Drawers, Early Penna. 6 Spindle Windsor Hoop Back School Chair, Nice 3 Piece Walnut Marble Top Bedroom Suite, Modern Cherry 2 Part Dutch Cupboard (Nice), Cherry Dining Room Table with 6 Chairs (Modern), Early Painted and Turned Egg Cup, 12 Service Noritake Dinner Set, Fairmont Pattern, Blue Decorated War Bonnet Crock, F.H. Cowden Stencil Crock, Other Blue Decorated Crocks, Large Amount of Good Aged Lumber, Brass Quoits, 2 Horsehead Ties, Cast Iron Bull Dog, Brass Sleigh Bells, Cow Bells, Glue Pot, Brass Candle Sticks, Signed Brass Bucket, 3 Footed Brass Urn, Miniature Flat Iron, Good Pressed Glass Dishes, Sherbets, Goblets, Several Sets of Individual Salts, Over 100 Piece Salt and Pepper Shaker Collection, Straford and Roger Bros. Silverware, Germany Cup and Saucers, Peanut Butter Tumblers, Milk Glass, Noritake Dishes, Berry Set, Nippon Salt and Pepper Shaker, Early Walnut Spool Turned Rope Bed, Pine Jewelry Chest (Small), Child's Chair and Rocker, Round Oak Drop Leaf Table, Many Various Baskets, Walnut Rope Bed, Walnut Baby Cradle (Dovetailed), Good Oak Press Back Swivel Office Chair, Dough Tray, Oak Press Back Child's High Chair, 2 Softwood Grained Blanket Chests with Tills, Large Railroad Lantern, Rag Carpet, Deep Frame Pictures, Gold Leaf Mirror, 6 Hole Candle Mold, Slaw Board, Scale with Brass Scope, Agaware, Lance Cracker Jar, Bedding, Good Linen, Table Cloths and Napkins, Dollies, Wool Horse Blankets, Large Camel Back Trunk, Oak Chairs, Child's Oak Crib, Square Oak Extension Table with Claw Feet, Upright Clock, Book Case, Upholstered and Folding Chairs, Good 2 Piece Modern Bedroom Suite, Console Record Player, Upholstered and Leather Recliners, Walnut Wurlitzer 8 Pedal Organ (Like New), 2 Piece Early American Living Room Suite, 4 Piece Mediterranean Style Tables, Seth Thomas Chime Clock, Remington 22 Short/Long Rifle, Shotgun, 3 Piece Rock Maple Dinette Set, Table, Chairs, Buffet, Hutch, Redwood Lawn Furniture, Oasis Dehumidifier, G.E. Upright Freezer, Frigidaire Refrigerator, Roper 4 Burner Electric Stove, Frigidaire Washer and Dryer, Wissler Trough, Platform Scales, Drying Rack, Meat Benches, Large Statues of Figurines, Market Items, Card Tables, Large Amount of Hand and Garden Tools, 16 Metal Office Chairs, Rainbow Sweeper, Table Lights, Lanterns, Bearcat Scanner, Wooden and Aluminum Step and Extension Ladders, Heavy Duty Child's Express Wagon, Cooper Electric Edge Trimmer, Toro Key Start Mower, Everyday Kitchen Appliances.

This is only a partial listing.

Food Served

Terms: Cash or Approved Check

Auction For:

IRENE S. HOSTETTER
35 Corry Avenue
Lancaster, PA

Auction Conducted By The
J. Omar Landis Auction Service
Jay M. Witman AU001127-L
Box 501, Ephrata, PA 17522
717-627-0789 or 665-5735

SLITOR HILL FARMS HERD DISPERSAL

REGISTERED POLLED HEREFORD SATURDAY, MAY 25, 1985

11:00 A.M.

MIDDLESEX, NEW YORK

Sale at the farm on Slitor Hill Road. Follow auction arrows from Rte. 364-245 intersection at Middlesex.

Selling 47 Lots: 3 top bulls including "Knockout", an Enforcer son and Reserve Champion at the 1984 Keystone International; A 1983 "Butler" son ready for service!; 1984 "Stick" son with an excellent show future! 7 bright yearling heifers of show calibre; 4 open ready to breed heifers; and 24 lots of cows and cow calf pairs representing the best of current breeding to nationally known lines! All ready for immediate interstate shipment! Don't miss this opportunity to buy!

Terms: Cash or honorable check day of auction!

Owners:

SLITOR HILL FARMS,
DON AND JO DEAN
716-554-3970 (home)
or 716-374-2180 (office)

Diane Stape, Herdsman

Auction conducted by
PIRRUNG AUCTIONEERS, INC.
Wayland, New York 716-728-2520

PUBLIC BANKRUPTCY AUCTION

VALUABLE REAL ESTATE AND FARM EQUIPMENT MONDAY, MAY 20, 1985

at 10:00 a.m.

Located app. 3 miles so. of Hamburg, Pa. along Berne Rd. Tilden & Centre Twp., Berks Co., Pa. app. 1 mile so. of Berne Station.

Real estate consists of 2 farms, 107 acres and 56 acres. Real estate will be offered at 10:00 a.m. on the premises of the 107 acre farm along Berne Road. Farm #1 consists of a parcel of land located in Tilden and Centre Townships, Berks Co., Pa. Containing 107 acres M/L thereon erected a large farm house, large barn and various storage buildings more fully described in Deed Book 1372 - Page 579, Berks Co. Records. Farm #2 consists of a 56 acre farm with farm house and barn located in Centre Township, Berks Co., Pa. more fully described in Deed Bk. 1522, Page 148 in Berks Co. Records.

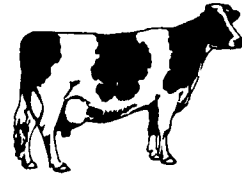
Farm equipment consists of the following line of "I.H.C." equipment. # Flail Chopper. #550 Harvester, 826 Diesel Tractor, #46 Baler, 105 Forage Box, #51 Forage Box. #330 Wagon. 990 Haybine. #56 Blower. Super M Farmall. 3 Wagons, 2 #100's, 1 #52. #2 MH Corn picker. 130 Manure Spreader. 350 Diesel tractor, 2000 Loader Ontario 14 hoe drill, #15 Side rake, 700 transport disc, #113 - 3 bott. plow #615 - 6 bottom plow, J.D 3 sect spring harrow, 26' Little Giant elevator

Auction by order of
FREDERICK L. REIGLE, ESQ.
215-779-8000

Trustee in Bankruptcy
in RE Calvin L. Sweitzer
and Florence M. Sweitzer
Case # 82-05902

E.M. Murry Associates

10 S. Broad St
Lititz, PA 17543
Elmer Murry 626 5244 626 2636
Richard Murry 626 8175 949 2280
Ken Miller 665 2073
Professional Auctioneers
Appraisers and Advisors
Since 1953



COMPLETE DAIRY HERD DISPERSAL

FRIDAY EVE., MAY 24, 1985

7:00 P.M.

Selling at Kling's Sale Barn, located 15 miles North of Carlisle on rt. 74, 2 1/2 miles N.E. of Landisburg, Perry Co., Pa.

90 HOLSTEINS 90

Consisting of 45 Mature Animals; 10 Bred Heifers; 35 Yearlings, Open Heifers & Calves. 10 Head Registered; 9 I.D. Grades; 2 Registered Bulls; Herd Average is over 15,200m 532fat; Individual Records to 22,000m; 3 Cows milking at 90 lbs. now.

Sire of Registered Animals include-

Jet Stream, Milestone, Clinton Camp Majesty, Harrisburg Gay Ideal, Grand Fortune, Superior, Astro Galaxy, Fury Lad, Star Dust, Astronaut Jewel.

All Cattle carry Service of Atlantic Sires. Service Sires Include-Stewart, Ace, Very, Penstar, Basic, Valor, Bransdale, Rebel, Sun Gold Big Boy and Many More.

13 Animals to freshen in April-8 in May & June; 18 Fall Cows.

"This is a very Nice Young Herd

that has improved every year"-

1983 Herd Average-12,800-463 fat

1984 Herd Average-14,000-495 fat

1985 Herd Average-15,200-532 fat

(13 Mo. Calving interval on the Herd)

All Young Stock and one-half the dairy herd is calftlood vaccinated.

Catalogs * Pregnancy Checked * 30 Day Test



R.D. 1 Landisburg PA 17040
tel. (717) 789-3883 • 789-3616

License No. AU-000500-L

Sale By: Kling's Auction Service

Landisburg, Pa.

717-789-3883

Lic. #AU-000500-L

HIDDEN VALLEY FARM

Owner,

BRUCE TRAUGER

R.D.1, Dalmatia, Pa.

717-758-6632

—THE HUNTERDON HILLS



COMPLETE DISPERSAL— THURSDAY, MAY 23rd—11:00 A.M. SHARP

Rosemont, N.Y.

170 REG. HOLSTEINS—80 COWS (34 2 Yr. Olds)— 90 HEIFERS

In only 17 years with Holsteins, 33 Ex Cows have been born here (27 with the Hunterdon prefix) Now is your opportunity to reap the benefits of this breeding program. Whether it be one of the 10 Ex or 28VG mature cows, one of the top group of 34 2 yr. olds carrying this inheritance, or one of the group of fine heifers this is truly an outstanding opportunity for all Holstein breeders.

—TOP PRODUCTION—

2 with 1108-1212 Fat

3 with 933, 960 & 995 Fat

16 from 801-881 Fat

15 from 704-793 Fat

3 from 25-29000 Milk

6 from 24-25000 Milk

7 from 23-24000 Milk

19 from 21-22000 Milk

--and 34 on test as 2 yr olds--

WATCH NEXT WEEK OR SEE MAY 10 WORLD FOR MORE DETAILS!!!

Farm Location: Just across the river into New Jersey! Go south from Flemington N.J. or northeast from Doylestown, Pa. on Rt. 202 until just before the Delaware River from N.J. or just over the river from Pa., then north on N.J. Rt. 29 to farm which is just 1 1/2 miles north of Stockton, N.J. and 10 miles South of Frenchtown. From Lancaster area take Pa. Tpk to Willow Grove Exit. Then Rt. 611 N to Rt. 202N. Travel thru only little over 2 hrs.

Sale Headquarters: Holiday Inn, New Hope, Pa.

215-862-5221

Sale Staff: Clarence Stauffer 717-738-2406

Chas Myers 717-898-0983

John Merryman 301-771-4625

Send For Catalog to-

Hunterdon Hills Holsteins, Inc.

Box 140 Rosemont, N.J.

609-397-2270

Lloyd Wescott

John Paulmier, Mgr.

609-397-3342

BACKUS ASSOCIATES, INC

P.O. Box 424

Elizabethtown, Pa 17022

717 367 9236

315 963 7231