

# THE OLD FARMER'S ALMANAC

MAY 13-19, 1985

Sunny and bright, no storms in sight

Don't remove winter mulch from strawberry plants too soon. Average length of days for the week 14 hours 38 minutes. New moon May 19 (Sun). Composer Charles Ives died at age 79 May 19 1954. Mount St. Helens erupted in south western Washington May 18 1980. Congress authorized new coin—the nickel—May 16 1866. First Kentucky Derby May 17 1875. God gives the milk but not the pail.



Ask the Old Farmer: Why were bridges covered in the old days? To keep hay from blowing off a wagon into the river? R.D.B. Nashville. Bridges were covered for the same reason on barns have roofs—to protect wooden decking from the weather. But we also know that such coverings were handy for other purposes. Home Hints: Hot vinegar will remove paint spots from windows.

## OLD FARMER'S WEATHER FORECAST

**New England.** Beginning of week sunny and warm through end of week partly sunny mild.  
**Greater New York-New Jersey:** Rainstorm with cool temperatures at week's beginning midweek warm partly cloudy end of week cloudy rain.  
**Middle Atlantic Coastal:** Cloudy at beginning of week warm temperatures rain north at midweek end of week brings more rain.

(All Rights Reserved. Yankee Publishing Incorporated. Dublin NH 03444)

## St. Louis Cattle

Thursday, May 9

Report supplied by USDA

Receipts This Week 3,500  
Week Ago 3,800  
Year Ago 3,500  
Compared to last week's close, Slaughter Steers and Heifers mostly 1.50-2.00 lower. Cows 1.00-2.00 higher. Bulls steady. Slaughter supply mainly Choice and Mixed Choice and Prime Steers and Heifers, with several lots YG 4-5, around 10% Cows.

**SLAUGHTER STEERS:** Mixed Choice and Prime 2-4 1050-1350 lbs. 55.00-56.00; 4-5 1050-1200 lbs. 49.50-51.75. Choice 2-4 950-1300 lbs. 54.00-56.00; 3-4 1100-1400 lbs. 51.00-54.00. Mixed Good and Choice 2-3 900-1200 lbs. 53.00-54.50. Good 2-3 900-1200 lbs. 52.00-54.00. Mostly Good W-E 1100-1500 lbs. Holsteins 48.00-51.00. Standard to Good 2-3 1100-1500 lbs. 47.00-50.00.

**SLAUGHTER HEIFERS:** Mixed Choice and Prime 2-3 900-1100 lbs. 54.00-55.00; 4-5 975-1200 lbs. 48.50-50.00. Choice 2-4 850-1100 lbs. 52.00-54.00; 3-4 900-1100 lbs. 50.00-52.00; 4-5 950-1200 lbs. 48.00-50.00. Mixed

Good and Choice 2-3 850-1000 lbs. 51.00-52.50. Good 2-3 750-1000 lbs. 48.00-51.00.

**COWS:** (Closing Week Sales) Breaking Utility and Commercial 2-4 40.00-42.00. Cutter and Boning Utility 1-2 39.00-42.00. High-Yielding Utility 1-2 42.00. Canner and Low Cutter 1-2 35.00-39.00. Shelly Canner 1-2 29.00-35.00.

**BULLS:** YG 1-2 1050-1800 lbs. 47.00-50.00. Individual YG 1 1950 lbs. 50.75.

## Weekly Sheep Auction

Wednesday, May 8

Receipts around 150 head. Compared to last week, spring Slaughter Lambs 3.00 higher. Feeder Lambs 2.00 higher. Not enough of any other class to test market trends. Demand good for Spring Slaughter Lambs, moderate for the balance. Supply light.

**SLAUGHTER LAMBS:** Mixed Choice and Prime Spring 90-105 lbs. 76.00-79.00. One small lot 118 lbs. 65.50. Old crop lambs scarce.

**SLAUGHTER EWES:** Few Utility 22.00.

**FEEDER LAMBS:** Mixed

Choice and Fancy 65-75 lbs. 66.00-69.00.

**FEEDERS:** (including around 800 at the regular Thursday auction.) Steer Calves 300-500 lbs. steady to firm Heavier Steers and all weight Heifers weak. Overall quality a bit below recent weeks. Spring field work in full swing, keeping receipts and attendance light. Supplies consisted mostly of 400-800 lb Steers and 300-700 lb Heifers.

**FEEDER STEERS:** Medium and Large Frame 1 300-400 lbs. 71.00-75.00; 400-500 lbs. 73.00-79.00; 500-600 lbs. 66.50-69.50, one lot Missouri gold label 73.00; 600-700 lbs. 66.00-67.00, fleshy 60.00-64.00; 700-800 lbs. 60.00-62.75. Medium and Large Frame 1-2; 300-500 lbs. 64.00-70.00; 500-600 lbs. 63.00-67.00. Small Frame 1-2 400-500 lbs. 67.00-70.00; 550-600 lbs. 50.00-56.00. Large Frame No 2 Holsteins; few lots 600-700 lbs. 51.00, few lots 700-800 lbs. 46.50-50.00.

**FEEDER BULLS:** Medium and Large Frame 1-2; 400-500 lbs. 61.00-68.00; 500-700 lbs. 57.00-63.00.

**FEEDER HEIFERS:** Medium and Large Frame 1: 300-400 lbs. 59.00-63.00; 400-500 lbs. 57.00-61.50, one lot 64.25; 500-600 lbs. 57.00-58.00; 600-750 lbs. 53.00-56.00. Medium and Large Frame 1-2: 300-600 lbs. 52.00-58.00.

## Shenandoah Valley Livestock

Harrisonburg, Va. Saturday, May 4

Report supplied by auction

**FEEDER CATTLE:** Trend-Steers 2.00 higher; Heifers Steady. Steers- M&L-1 300-500 lbs. 68.00-75.00, 500-700 lbs. 63.00-74.50, 700-1000 lbs. 52.50-65.50. Holstein 300-1000 42.50-53.50. S-1&M&L-2 300-500 lbs. 68.00, 500-700 lbs. 58.50-66.00, 700-1000 lbs. 54.50-64.50. Feeder Bulls: M&L-1 300-500 lbs. 57.00-64.00, 1 lot 68.00, 500-700 lbs. 57.00-65.00, 700-1000 lbs. 45.00-55.00. S-1&M&L-2 300-500 lbs. 54.00-63.00, 500-700 lbs. 45.00-50.00. Heifers- M&L-1 300-500 lbs. 51.00-61.25, 500-700 lbs. 47.00-56.00, 700-800 lbs. 46.75-50.50. S-1&M&L-2 300-500 lbs. 49.00-54.00, 500-700 lbs. 46.50-50.00; 700-800 lbs. 47.75.

**STOCK COWS:** Beef 350-585 8/pair.

**SLAUGHTER COWS:** Trend-Utility & Commercial 2.00 Lower-Canner & Cutters Steady 1.00 higher. Utility & Commercial 2-4 35.00-40.75; Canner & Cutters 1-3 33.25-36.25.

**LAMBS:** Trend- 2.00 Lower. High Choice & Prime 74.50; Choice 71.00, Slaughter Ewes 2.00-15.00; Head Ewes 60.00-85.00 w/lambs.

**HOGS:** US1-3 200-240 lbs. 40.00; Sows 1-3 few 44.50-45.00; Boars 26.00.

VEAL: Choice & Prime 70.00-73.50.

SLAUGHTER CALVES: Good Choice 50.00-60.00.

## Valley Livestock

Athens, Pa.

Monday, May 6

Report supplied by auction

Holstein Hfr. Calves to 65.00  
Veal Calves 65.00-97.00.  
Vealer Bull Calves 65.00-86.00  
Slaughter Calves 50.00-57.00  
Grassers & Feeders 40.00-59.00  
Lambs 50.00-71.00.  
Sheep 12.00-26.00.  
Hogs, 200 to 250 39.00-42.50  
Sows 29.00-33.00.  
Boars 27.00-30.00.  
Pigs each 15.00-33.00  
Heifers 37.00-42.75.  
Steers, medium 39.00-42.50  
Steers, feeder 36.00-50.00.  
Bulls 44.00-49.25.  
Cows, utility 40.00-42.00.  
Cows, fat 40.00-42.00.  
Cows, medium 34.00-36.50.  
Cows, poor or small 28.00-34.00.  
Cattle Market higher.  
Calf Market higher.  
Goats each 10.00-50.00.

Remarks expect both cow and calf market to be real good next few weeks.

## Forage testing at a fast turnaround



State of the art computerized analysis (wet process accuracy)

- Moisture
- Dry Matter
- Proteins
- Fiber
- Energies
- 8 Minerals

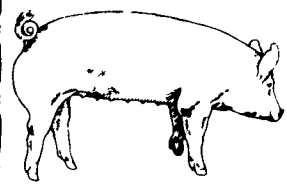
We test any feedstuffs including process food by products

## ONE DAY SERVICE with computer printout

Call today for FREE sample printout or mailer bag

267-1276

**FARM FEED & FORAGE laboratories inc.**  
437 Wolf Ave., Chambersburg, PA 17201



EMERY'S BUYING STATION

## OPEN TO RECEIVE YOUR MARKET HOGS

AT THE GREEN DRAGON MARKET  
RD 4, EPHRATA, PA 17522  
1 MILE NORTH OF EPHRATA ON NORTH STATE STREET.

HOURS: MONDAY, TUESDAY, and WEDNESDAY 6:00 A.M. to 11:30 A.M.  
215-458-5677 Residence  
717-733-9648 Office

YOU ARE PAID FOR YOUR HOGS IMMEDIATELY

Ken & Lois Emery, Proprietors

## FRIDAY, JUNE 7 ON THE FARM MONTHLY BRED GILT SALE

Sale to Start Promptly at 1:00 P.M. Every 4 Weeks

Located 18 miles south of Lancaster, Pa., 6 miles south of Quarryville, take Rt 272 to Little Britain, turn north, follow Little Britain Road to Jackson Road, right 2nd farm, OR take Rt 222, out of Quarryville to Cedar Hill Road to Little Britain Road to Jackson Road, left Watch for sale arrows

50 to 60 Head  
Now selling our new hybrid gilts representing mostly York & Hampshire & Landrace cross. Bred for easier & less trouble over farrowing and better weight gains.

Validated Brucellosis Free Herd #169  
Qualified Pseudorabies Free Herd #55

Hand mated with Breeding Dates

Local Trucker Available  
No Hogs Sold On Commission

CHRIST A. BEILER  
R.D. 2, Quarryville, Pa  
JOHN B. STOLTZFUS  
R.D. 1, Kirkwood, Pa

Abe Diffenbach, Auctioneer AU225L  
NEXT SALE DATE JULY 5



Be Wise... Check our prices before you buy!!

We will deliver in the Delmarva area

# SPRAY MATERIALS

- |                   |             |             |
|-------------------|-------------|-------------|
| * ATRAZINE        | * BLADEX    | * PRINCEP   |
| * DUAL            | * BANVEL    | * EXTRAZINE |
| * LASSO           | * LOROX     | * COUNTER   |
| * SUTAZINE        | * TOXAPHENE | * DYFONATE  |
| * ROUND UP        | * PARAQUAT  | * FURADAN   |
| * LASSO- ATRAZINE |             | * LORSBAN   |

## SAVE ON BULK HERBICIDES

• BICEP • LASSO-ATRAZINE • PROWL

MELVIN R. WEAVER

2213 Leabrook Road, Lancaster, PA 17601  
Ph: 717-569-6576 or 898-8354



## ATTENTION FARMERS

EVERY MONDAY HATFIELD PACKING CO. and MOYER PACKING CO.

Will Receive Your Hogs and Cattle at the DANVILLE LIVESTOCK MARKET  
RD 4, Danville, PA

- We will receive your hogs from 8 AM to 12 Noon every Monday Your hogs will be weighed and paid for immediately
- We will also accept your sows & boars
- Your cattle will be received from 12:30 to 5 P.M. We will either pay you for your cattle immediately or you may sell them dressed weight.
- There will not be a commission or yardage fee deducted from your check.
- You may call our office Monday morning and we will be able to tell you the base price for hogs for the day.

MELVIN M. LEHMAN - Owner  
Danville Buying Station  
Phone: 717-275-2880