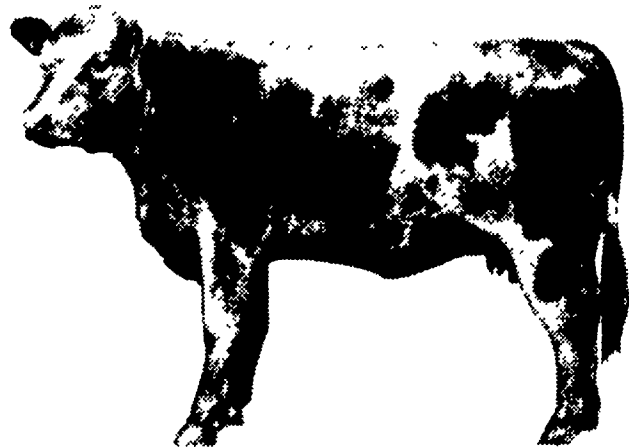


# GRASS TIME SALES

**SATURDAY, MAY 25, 1985**

1:00 P.M.

Sponsored by PA Simmental Association  
Location: Farm Show Complex, Harrisburg, PA.  
**SELLING 65 SIMMENTALS**



25 Cows w/Calves at side  
25 Bred Cows  
10 Open Purebred Heifers

5 Breeding Age Bulls  
Purebred and 3/4 and 1/2 % Simmental  
Many 3 in 1 packages

For more information, Contact:

## STOUGH LIVESTOCK SERVICES

3882 South Cochran Rd.  
Charlotte, MI 48813  
517-543-6670

The Sale Committee  
Wayne Stough  
717-225-6279

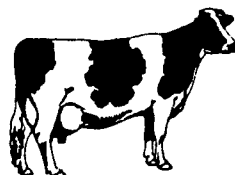
Auctioneer: John Spiker, Rt. 1, Box 161-S  
Jane Lew, West Virginia  
304,884,7915 AU-001908-L

## Dairy and Livestock Sales

### Public Auction Register

Closing Date Monday 5:00 P.M.  
of each week's publication

SAT JUNE 1 - 9:30 AM  
Public Sale of Real Estate,  
Farm Mach., Shop Tools  
Located just off Rt. 174,  
Carlisle, Cumberland Co.,  
PA Terms by Donald  
Mullen Sensing Auc-  
tioneering Service



## COMPLETE DAIRY HERD DISPERSAL FRIDAY EVE., MAY 24, 1985

-7:00 P.M.

Selling at Kling's Sale Barn, located 15 miles North of Carlisle on  
rt. 74, 2 1/2 miles N.E. of Landisburg, Perry Co., Pa.

### 90 HOLSTEINS 90

Consisting of 45 Mature Animals; 10 Bred Heifers; 35 Yearlings, Open  
Heifers & Calves. 10 Head Registered; 9 I.D. Grades; 2 Registered Bulls;  
Herd Average is over 15,200m 532fat; Individual Records to 22,000m; 3  
Cows milking at 90 lbs. now.

Sire of Registered Animals include--

Jet Stream, Milestone, Clinton Camp Majesty, Harrisburg Gay Ideal,  
Grand Fortune, Superior, Astro Galaxy, Fury Lad, Star Dust, Astronaut  
Jewel.

All Cattle carry Service of Atlantic Sires. Service Sires Include--  
Stewart, Ace, Very, Penstar, Basic, Valor, Bransdale, Rebel, Sun Gold Big  
Boy and Many More.

13 Animals to freshen in April-8 in May & June; 18 Fall Cows.

"This is a very Nice Young Herd

that has improved every year"--

1983 Herd Average-12,900-463 fat

1984 Herd Average-14,000-495 fat

1985 Herd Average-15,200-532 fat

(13 Mo. Calving interval on the Herd)

All Young Stock and one-half the dairy herd is calftood vaccinated.

Catalogs \* Pregnancy Checked \* 30 Day Test



R.D. 1 Landisburg PA 17040  
tel.(717)789-3883 • 789-3616

License No. AU-000500-L

Sale By: Kling's Auction Service

Landisburg, Pa.

717-789-3883

Lic. #AU-000500-L

HIDDEN VALLEY FARM

Owner,

**BRUCE TRAUGER**

R.D.1, Dalmatia, Pa.

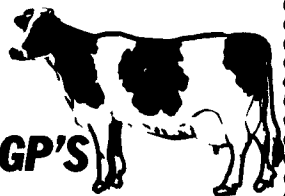
717-758-6632

## THE GJA - TOP - REG. HOLSTEIN DISPERSAL

**60% BRED FOR EARLY FALL! 11 VG'S-25 GP'S**

**FRIDAY, MAY 17, 1985 at 11:A.M.-**

**FLEMINGTON, N.J.**



For George & June Alles, 1 mile east of Flemington, N.J. on Spur Rt.  
514 off Rt. 202 2nd farm on left opposite Sun Ridge Development.  
**FARM SOLD!**

11:A.M.-66 HD - 52 Reg mature holsteins, 8 Reg bred heifers, 2 Reg breeding  
bulls, 4 grade cows. DHIA TESTED - 14,596M - 529F Rolling Herd Average. 20hd  
from 15,000 to 19,000M, 6 hd from 19,000 to 22,727M, 23 hd from 550 to 879F!  
16 yrs of DHIA testing!

CLASSIFICATION - BAA 102.2! 11 Very Good cows w/2 at 88 Pts, 25 Good  
Plus w/7 at 83 Pts, 14 Goods. Classified since 1976.

BREEDING - AI for 21 years using Sire Power and Select Sires! SIRES  
REPRESENTED - 2 RORA Elevations, 4 Betty Chiefs, 4 Milkys, 2 Astronauts, 2  
Valiants, Spirit, Jerry, Gemini, Seaman, Creek, Transmitter, 2 Triple Threats and  
others! SERVICE SIRES - 7 to Columbus, 5 to Forcaster, 5 to Stewart, 3 to Bell, 2  
to Pete, 3 to Valor, 2 to Ned, 1 to Chairman and others! LACTATIONS - 34 hd due  
late summer and early fall! A base builder herd! 25 hd due Aug and early Sept!  
Some cows selling are fresh recently! 8 Reg Heifers bred for fall! AGE - A young  
herd, average age around 4 yr. 3 mos! Cattle carry quality well attached udders  
w/strong legs. Young milky cattle are found here that haven't been pushed with  
feed. Cattle have a tremendous potential for higher production and score  
advancement! 99% home raised! BULLS - A 14 mos old Spirit son out of a 17,000  
lb. chief dtr A 15 mos. old Ranger son out of a 17,500 lb. Astronaut dtr. HEALTH -  
99% calftood Vacc., yearly IBR and Lepto Vacc., 30 Day T.B. & Blood Tested for  
interstate shipment! Pregnancy examined!

DELAVAL 46 COW PIPELINE w/auto washer, 4 units! SUNSET 625 gal Bulk Tank!

AUCTIONEERS NOTE! It will pay not cost to attend this sale! Plan to  
spend May 17 with us at the GJA dispersal. The Alles family have been very  
active in both county and state Holstein assoc. This herd is being sold  
because the farm has been sold!

Catalogs at ringside!

Pedigrees by Art Sutton!

TERMS - Cash or Good Check w/proper I.D. Full Settlement Sale Day!

Owner

**GEORGE & JUNE ALLES**

201-782-4207

**SALE CONDUCTED BY:**

**COL. FRED R. DANIEL AUCTIONEERS INC.**

**Neshanic Sta., N.J. 201-369-4784**

**(A Full Service Auction Co.)**

**LUNCH!**

## ALLEGANY-STEUBEN CALF AND BRED HEIFER SALE

**FRIDAY, MAY 17, 1985**

at 8:00 P.M.

to be held at the Club Sale Barn, Canisteo, NY, on Route 36, 10  
miles south of Hornell, 5 miles south of Canisteo, NY. Barn  
Phone: 607-698-8102.

### SELLING 75 HEAD

Top Quality Registered Holsteins  
Calves, Heifers, and Bred Heifers



A Few Featured Entries:

Celeste Barker, Ulysses, PA, sends a June '84 Leprechaun dau. out of a  
"VG-87" Kit Builder dam with 24,308 and 798f; next two dams are GP-83  
with 25,917 and VG-85 with 21,487. George & Bonnie Barker send a Nov. '84  
Valiant out of a GP-82 Boot-nick dam with 19280 3.9 770. Roy Simpson,  
Mansfield, PA, sends a Dec. '84 Woodbine Can Am daughter out of a "VG"  
dam with Ex-Mammary; ALSO a Reu-Hel Club Standard dau. DON  
COLEMAN, Hornell, NY, sends a Board Chairman heifer due in June and  
out of an "EX-2E" Astronaut dam. John Emerling, Perry, NY, sends a  
July '84 Mars dau. out of a "VG-86" dam with 23,830, next dam is "EX"  
with 31,260 1,196. Arnold Dueppengliesser, Perry, NY, sends an Oct. '84  
Tony dau. out of a "VG-88" dam with 27,450 1,028. Bret Benton, Troup-  
sburg, NY, sends a Sept. '84 Jewelmaker out of a "VG" dam with 20,244,  
next two dams are VG-87 and VG-88. Jerry Smith, Rexville, NY sends 5 top-  
pedigreed calves including a Dec. '84 Jewelmaker out of a VG VG-  
Mammary dam, next dam is "EX", next dam is VG-88. Montash Farm  
Holcomb, NY sends 2 bred heifers out of VG dams with +616 and +327  
index. Hamlet J Farm sends a King Arthur heifer due to Woodbine Pearl  
Comet and out of a VG dam; next dam is EX.

Including many more Outstanding entries, plus 2 Opportunity Calves to be  
offered to the Junior Holstein members.

Cattle will be innoculated for shipping fever and will be tested for in-  
terstate shipment.

Sponsored by the

**ALLEGANY-STEUBEN HOLSTEIN CLUB**

Sale Chairman:

Dan Williams, Houghton, NY

Ph. 716-437-5595

Selector:

Greg Coyne, Avon, NY

Ph. 716-226-3508

WILLIAM KENT, INC.

SALE MANAGER & AUCTIONEERS

STAFFORD, NY Ph. 716-343-5449

548-7738