

## Public Auction Register

Closing Date Monday, 5 00 P M  
of each week's publication

**MON MAY 20 - 5:30 PM**  
Public Sale of Mechanic's  
Tools, Power Tools, Auto  
Repair Tools. Located 425  
S. Broad St., Litz, PA, Rt  
501. Terms by Elro E  
Tomlinson, T Glenn &  
Timothy G Horst, Auc-  
tioneers.

**TUES MAY 21 - 4 PM**  
Farmersville Auction in  
Farmersville, 3 mi E. of  
Brownstown, Lanc Co.,  
PA

**WED MAY 22 - 9:30 AM**  
CST Public Auction of  
Powerline Eq For  
Crawford Electric, North  
Platte, Nebraska  
Vilsmeier Auction Co

**WED MAY 22 - 9 AM**  
Public Auction of Valuable  
Antiques & Pickup Truck &  
Tractor. Located 3741 Old  
Philadelphia Pk. Just E. of  
Intercourse, PA. Sale by  
Sue Worst, Executrix For  
Raymond B Worst Estate  
EM Murry Associates,  
Auctioneers.

**THURS. MAY 23 - 9 AM**  
Public Sale of Hshld  
Furnishings, Antiques,  
Watches, Clocks, Old  
Paper Money. Located  
York Co., 840 Madison  
Ave East of York  
Fairgrounds, off Rt. 74  
Reuben E. & Elizabeth R  
Lauer, Owners Clair R.  
Slaybaugh, Auctioneer

**THURS. MAY 23 - 5:30**  
PM Schannauer's Garage  
Public Sale of Garage Eq  
& Supplies Located along  
Rt 897, Reinholds, Lanc  
Co., PA. Across From  
Elementary School. Terms  
by Milford Schannauer, T  
Glenn & Timothy G. Horst,  
Auctioneers.

**FRI MAY 24 - 9 AM** Farm  
Equipment New Holland  
Sales Stables, Inc.,  
Auctioneers

**SAT. MAY 25 - 2PM** Public  
Auction of Valuable 5 Acre  
Farmette Located Take  
Rt 272 10 mis S  
of Lancaster, turn W on  
Rawlinsville Ave, go  
through Rawlinsville to  
Nissley Rd., turn left 1/4  
mi to Blue Gate Farm Or  
from Buck Rt. 272 1 mi N.  
turn W on Rawlinsville  
Ave Terms by Anne  
Norton, Kreider & Kline,  
Auctioneers.

**SAT MAY 25 - 10 AM**  
Public Sale of Farm Eq &  
Shop Tools Located on  
MudLevel Rd., Ship-  
pensburg, Cumberland  
Co. PA Owner J Clifford  
& Lillian G. Pilgrim  
Senseng Auctioneering  
Service.

**MON. MAY 27 - 1:30 PM**  
Open Consignment Sale  
for Ponys, Mules, Horses  
of all Breeds Driving &

Draft Horses. Shenandoah  
Valley Livestock Sales,  
Inc., 1044 Edom Rd.,  
Harrisonburg, VA 22801.

**MON. MAY 27 - 9 AM**  
Public Sale of Many Fine  
Antiques, Collectibles, D-  
ecorator Items & Hshld.  
Located 9 mis. W. of York  
on Rt. 234 to 400 West  
King Street in The  
Borough of East Berlin,  
Adams Co., PA. Con-  
ducted at The Carriage  
House at rear of former  
William Lease property.  
Charles E & Mariam I  
Bechtel, Owners. Clair R  
Slaybaugh, Auctioneer

**MON. MAY 27 - 9 AM**  
Farmersville Auction in  
Farmersville, 3 mis E. of  
Brownstown, Lanc Co.,  
PA

**MON MAY 27 - 9 AM**  
Public Auction of  
Woodworking & Metal  
Fabricating Shop. Located  
Briar Creek, PA. US Rt  
11 right below PA  
Aluminum Robert Bigart,  
Seller. Nevius Auction  
Service Dan Nevius,  
Auctioneer

**TUES MAY 28 - 4:30 PM**  
Public Auction of 6 1/2 a.  
Farmette-Country Home,  
Antiques, Modern Hshld.,  
Tools Located off Rt 30  
at New Oxford Square  
onto the Oxford Rd. going  
N. 9/10 mi. turning E at  
Public Sale sign in Mt  
Pleasant Twp., Adams  
Co., PA. Robert E & Edna  
Becker, Owners. Clair R.  
Slaybaugh, Auctioneer

**THURS. MAY 30 - 9 AM**  
Public Auction of

Processing Eq. For: Gull &  
Western, Gloucester City,  
NJ. Vilsmeier Auction Co.

**FRI. MAY 31 - 5:30 PM**  
Gap Auction. Antiques &  
Hshld. Goods sold at every  
auction. Located off Rt.  
41, Lancaster Turkey Hill  
Mint Mkt, across RR  
bridge Ira Stoltzfus &  
Son, Auctioneers.

### JUNE

**SAT. JUNE 1 - 10 AM**  
Annual Consignment Sale  
& Gas-Up, Nittany Antique  
Mach Assn. at Penns  
Cave Grounds, Centre  
Hall, PA. Info L.F. Harp-  
ster, RD2, Box 215, PA  
Furnace, PA 16865. 814-  
692-8638 or 814-237-  
3141, 814-364-1878

**SAT JUNE 1 - 9:30 AM**  
Public Sale of Antiques,  
Collectibles, Books &  
Hshld. Located along  
Susquehannock Dr,  
Drumore Twp., Lanc. Co.,  
PA. DIRECTIONS: Rt. 272  
S of Lancaster to Silver  
Spring Rd., turn W onto  
Silver Spring Rd. &  
continue to  
Susquehannock Dr turn  
left & drive to Drumore  
Meeting House Turn right  
at Meeting House. Terms  
by S. Margaret Long, T  
Glenn & Timothy G. Horst,  
Auctioneers.

**SAT JUNE 1 - 9:30 AM**  
Public Sale of Real Estate,  
Farm Mach., Shop Tools.  
Located just off Rt. 174,  
Carlisle, Cumberland Co.,  
PA. Terms by: Donald  
Mullen. Senseng Auc-  
tioneering Service.

## Dairy and Livestock Sales

**SAT. JUNE 1 - 9 AM**  
Auction of Trucks &  
Vehicles for Philadelphia  
Electric Co., Norristown,  
PA. Vilsmeier Auction Co.,  
Inc.

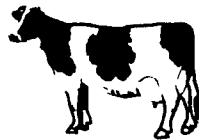
**TUES. JUNE 4 - 5PM**  
Public Auction of  
Woodworking Tools, Guns,  
1974 Ford Gran Torino,  
Personal Property.  
Located along Rt. 625 in  
Village of Bowmansville.

From Rt. 23 take Rt. 625  
N. to Village of  
Bowmansville. Terms by  
Kathryn Witmer, Randal  
Kline, Lloyd Kreider, Roy  
Good, Jr., Auctioneers.

## LARGE PA HERD DISPERSAL

at the Frederick Fairgrounds  
Frederick, MD

**96 HEAD YOUNG HOLSTEIN COWS**  
**TUESDAY NIGHT, MAY 7, 1985**  
7 O'Clock D.S.T.



Herd consists of several cows recently fresh. 7 due in May, 6  
June, 11 July, 13 Aug., 12 Sept., 6 Oct., 4 Nov.

Balance, all stages of lactation.

73 head are 2-4 years old.

Milking very well. These cattle are selling at the fairgrounds,  
due to tenant on leased farm where sale isn't possible. Make  
plans to attend this sale.

You will like this young herd

Dispersal Managed by:  
**REMSBURG SALES SERVICE**  
301-473-8214

30 Day TB and Blood Test. Preg. Examined.

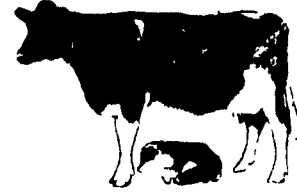


## COMPLETE HERD DISPERSAL

for

Philip & Linda Beiler

**FRIDAY EVE. 7:00 P.M., MAY 10, 1985**



35 Head of Registered Holstein Cows and  
Heifers. 1984 DHIA 16,000 lb. of Milk, Lactation  
Ave 18,400.

**Sires Represented:** Chairman, Spirit, Glen  
Valley Star, Molly Chief and others.

Several Records over 21,000 lb. of Milk &  
4.3% T.

**Semen Selling** - Jet Stream, Electra, Cavalier,  
Columbus, & Sexation. Plus 250-300 additional  
amples and straws of semen. Also 3 semen  
tanks.

**Small Items Selling** - Agway Breeding Wheel,  
Nelson Waterer, Wheelbarrows, Assorted  
Medicines, Halters, Steel Drums, Circulation  
Fans, Forks, Scrapers, Brooms, Shovels, &  
Feeding Trough.

-Also Five Cows From Fountain Hill Farm, Rd.  
#2 Gap Pa.

Immediately following complete herd of  
Registered & Grade Holsteins for Solanco View  
Farm, 55 Head Registered Cows & Heifers.  
Herd consists of cow recently fresh, mostly fall  
freshening herd for base milk. Herd averaging  
54 lb. per cow daily.

All cows bred artificially to Sire Power &  
Atlantic w/approx. 20 Head safe w/calf and due  
summer & fall. Breeding that cows are in calf to  
include: Spirit, Stewart, Jemeni, Wiseman &  
many Elevation sons. Reason for dispersal-  
discontinuing farming operation.

30 Day TB & Blood, Pregnancy Checked.  
Consigned: **DANNY M. GROFF,**  
Quarryville, RD2.

## -HEIFERS, HEIFERS, HEIFERS-

Vaccinated Off The Farm Dispersal

**FRIDAY MORN 10:30 AM MAY 17, 1985**

300 Head of Reg. & Grade Holstein Heifers  
"Mostly Vaccinated".

-150-Big Strong Springing & Summer thru Fall  
freshing heifers, mostly vaccinated.

-150 Head all sizes from calves thru Bred  
heifers.

For consignments off the farm only-call us in  
advance for advertisement and best results. We  
have a good demand for good clean heifers.

We Still Need Summer & Fall Cows For Our Private Order. Also We Need  
Small Open Vaccinated Registered Heifers From Top Cows.

Sales Managed By

**SHADY LANE DAIRY SALES, INC.**

Rd 4 Bx 463

Quarryville, Pa. 17566

OWNER'S

**GLENN D. FITE**  
717-786-2750

**DAVID L. FITE**  
717-786-1725

"Six Generation's Of Experience & Service"