



Berks County DHIA Monthly Report

March, 1985

Owner	Brd	No Cows	Days In Milk	Lbs Milk	Lbs Fat
Charles & Tim Kissling	3	66 0	86 4	21 470	821
Plushanski Farms Inc	3	124 2	86 7	21 155	812
Bendy Brook Farm	3	45 4	87 4	21 614	793
Mertz Brothers	3	42 4	87 0	21 045	788
Reu Hel Farms Inc	3	75 9	87 1	20 300	754
Junge Farms	3	71 6	87 3	19 015	749
Stephen J Janos	3	33 8	90 1	20 047	746
Heindel Farms Inc	3	30 4	87 1	18 157	732
Forrest C Stricker	B3	49 5	87 8	20 117	727
Rothrock Golden Hol	3	63 9	81 1	19 324	717
Mark A Wolfskill	3	99 5	83 3	19 280	714
DJSP Schuler	3	58 1	86 7	19 247	712
Leonard G Stoltzfus	3	93 2	85 6	19 594	710
David L Schrack	B3	102 2	88 4	17 840	709
Vista Grande Farm	3	87 3	85 7	17 920	691
Pinnacle View Dairy	B3	45 2	86 8	17 786	690
Good Bros	B3	60 3	90 1	20 331	690
George S Troutman Jr	B3	72 7	87 7	18 256	682
Linden Loch Holstein	3	63 9	86 2	18 037	681
Retland Farm	3	49 2	86 6	17 845	676
Donald B Duncan	B3	98 6	88 7	17 144	666
Show Top Farms	3	161 4	90 7	16 992	666
RR Troutman & Sons	3	120 8	83 3	17 124	666
Merlin J Grube	B3	49 9	86 5	16 545	665
Mervin Brubaker	B3	65 9	85 9	17 586	664
Arlan Kruck	B3	71 2	85 8	16 825	663
Leroy E Howard	3	140 8	90 8	18 042	663
Clarence B Kulp	3	67 1	87 2	17 095	663
Udder Valley Farm	B3	67 2	89 4	17 799	662
Yost Brothers	B3	113 2	88 5	18 327	661
Zahncroft Farm	3	48 4	87 0	17 160	660
George E Moyer	3	99 5	85 6	16 840	660
Daview Farm	3	64 4	85 5	17 710	659
Glenn B Gockley	B3	41 3	86 7	18 012	656
Robert E Kopfer	B3	57 2	88 7	18 241	655
Frank G Gromlich	3	65 7	85 9	16 143	649
Dean & Brenda Daubert	5	55 2	87 1	16 058	647
Ralph & Ken Sanner	3	81 0	86 0	17 214	647
Martin & Missy Moyer	B3	51 4	84 9	17 116	647
Raymond A Seidel	3	37 2	86 5	17 104	645
Red Fever Farm	B3	67 4	89 3	17 476	644
Whirlwind Acres	B3	98 3	90 7	17 224	642
Oleka Acres	3	55 3	81 6	18 469	641
Hylark Farm	3	71 7	87 7	16 921	640

Edward A Bleiler	B3	51 2	88 2	18 796	639
Ken & Debra Dietrich	B3	46 5	82 6	17 174	634
Andrew D Stoltzfus	3	106 5	82 7	17 377	634
Scattered Acres Inc	B3	154 4	84 7	17 141	633
Fred J Walters	B3	66 5	88 8	16 877	631
Ridge Crest Farms	B3	58 2	87 1	15 963	631
Wilhomar Farm	3	43 7	85 9	18 230	626
Grumbro Holsteins	3	41 3	84 5	16 708	625
Bernell L Burkholder	B3	43 7	83 7	17 801	624
Sam Shirk	B3	52 0	85 4	17 220	621
Ernest O Miller	B3	210 8	83 5	17 677	621
Thomas Rentschler	B3	34 3	84 8	17 216	620
Barry L Burkholder	B3	48 8	84 3	17 342	620
Donald M Meyers	3	61 0	87 7	16 116	618
William G Howerter	3	91 6	85 9	16 335	618
Daniel J Harnish	B3	88 9	87 5	15 973	618
Meadow Spring Farm	B3	46 5	82 1	17 161	617
Joe & Deb Kohler	G3	34 1	86 4	17 072	616
E Daniel Leatherman	B3	69 2	87 9	17 057	616
Herb Top Farms	B3	31 8	83 8	16 159	615
Ontelynn Acres	3	115 8	89 0	15 750	611
Ker Min Farms	3	78 5	87 6	16 318	610
Ernest C Hoffman	3	55 7	89 4	16 311	606
Ray W Seidel	B3	34 9	86 9	15 963	605
David J Williams	B3	39 5	86 2	17 222	604
Pine Brook Farm	3	97 7	86 2	15 983	604
Heindel Farms Inc	1	22 6	84 7	14 295	604
Harold Schuler	3	36 6	88 3	16 052	602
Robert C Dreisbach	4	74 3	83 7	12 276	601
Irvin G Weaver	B3	50 2	87 8	15 912	601
William C Adams	3	84 2	90 1	14 856	597
Swatara Dairy Farm	3	71 8	83 1	14 457	597
Raymond L Kulp	B3	76 7	91 6	15 403	595
Richard W Hoppes	3	68 8	86 4	15 097	594
Clarence C Sattazahn	B3	104 3	88 4	16 060	593
Marlin J Stutzman	B3	43 0	89 4	17 082	593
Elvin Brubaker	B3	39 6	85 6	15 761	592
Raymond B Nolt	B3	82 7	86 6	16 135	591
F Mark Weber	B8	25 2	87 6	15 418	589
Harvey C Krill Jr	B3	42 2	88 0	15 311	588
Alton Rohrbach	B3	52 8	88 4	16 271	587
Floyd Kurtz	3	55 4	86 1	16 332	587
Robert L Sattazahn	B3	102 3	90 3	16 444	585

Donald Burkholder	G3	99 8	86 4	15 509	584
Way Har Farms	B3	112 2	87 5	15 487	584
Terry Kunkel	B3	37 4	86 2	16 350	583
Bruce Reigel	G3	37 3	85 1	14 716	582
Lester Martin	B3	44 6	80 5	15 496	581
FM Browns Sons Inc	B3	93 6	92 9	17 081	581
Gary Martha Heffner	B3	40 9	80 3	15 263	581
Harold Fenstermaker	3	34 8	86 8	14 477	580
Harvy M Weaver	B3	52 0	85 4	15 544	579
Fleanor K Siegfried	3	98 1	88 8	15 339	579
Paul B Martin	B3	60 5	80 4	16 588	579
Tulpa Canal Farm	B8	37 4	82 5	15 443	579
Lynnacres	3	176 5	90 3	15 675	578
Phillip J Werley	B3	65 3	84 6	15 138	576
Charles D Moyer	B3	118 4	83 2	15 659	574
Win Dale Farm	4	52 4	87 5	11 531	571
Carl H Rabenold	B3	56 2	85 0	15 757	570
Arthur D Schlappich	B3	63 0	84 0	16 242	569
Alfred E Schmidt	3	55 6	89 9	15 274	569
Ray E Bicksler	3	46 5	87 2	15 241	568
Nathan Nolt	B3	53 3	83 6	15 579	567
Dennis Adam	B3	35 4	88 2	14 646	567
Wilmer Dreibelbrs Jr	B3	78 7	82 5	15 278	567
David Clare	2	44 6	85 6	12 267	565
Glenn R Harnish	B3	104 1	85 6	15 662	565
Luke Snyder	B3	47 2	89 4	15 607	564
Teen Chal Farm	B3	124 8	87 2	15 160	564
Ernest E Heckman	G3	51 7	86 5	15 352	564
Harold Dietrich	4	28 3	87 6	14 563	563
David Y Knauer	B3	53 4	82 9	15 635	563
Harold Dietrich	1	28 1	86 9	14 659	562
Lewis Nolt	B8	62 5	86 2	14 841	562
Ronald Kelchner	B3	70 8	85 3	15 827	561
John H Stump	3	59 5	84 4	15 048	558
Charles W Wagner	B3	51 0	87 1	15 464	558
Vernon G Good	B3	35 5	89 4	15 580	558
Robert E Kieffer	B3	60 9	88 2	16 350	557
Harold Dietrich	B3	37 7	87 8	14 767	557
Glenn E Hoffman	B3	51 6	85 9	14 826	552
Kenneth Zook	B3	57 7	87 3	14 686	552
Tom Werley	B3	55 5	86 5	14 790	551
David Gross	B3	38 9	81 9	14 362	550

Medfly emergency declared

WASHINGTON — Secretary of Agriculture John R. Block declared that an emergency exists in Florida because of an outbreak of Mediterranean fruit flies that threaten the fruit and vegetable growing industries of this country. His declaration authorizes the use of federal funds and personnel to combat the flies.

"The Mediterranean fruit fly is one of the most destructive insect pests known," Block said. "This declaration will enable us to

commit USDA resources to help Florida plant protection officials eradicate this pest and prevent it from spreading to other parts of the United States."

A single unmated female Medfly was trapped north of Miami on Feb. 25. On April 9, two additional flies were trapped within three miles of the first find, indicating the likelihood of a reproducing population.

The Medfly can attack more

than 200 kinds of fruits and vegetables. It lays its eggs in the fruit, and when they hatch the young feed on the pulp, spoiling the fruit for human consumption.

Florida's last Medfly infestation — in Miami — was declared eradicated last November. The cost of that campaign was about \$1.1 million — shared by the state and federal governments. This is the seventh Medfly infestation in Florida since 1929.

If the engine quits, two-way radio could pay for itself today.



Lose just one day during the planting season and it could make all the difference between a good crop and a poor one. That's why you should be equipped with a Johnson FM two-way radio.

With two way radio if your engine quits you can simply call for help. Chances are a mechanic can get to you and get you going again while there's still some daylight left.

But without two way radio you'd just have to start walking. There are a lot of other ways Johnson FM radio can save you time and money. Why not let us show you how you can lease or own a complete two way system for as little as 75¢ a day.

Authorized Sales & Service

TRIANGLE COMMUNICATIONS, INC.

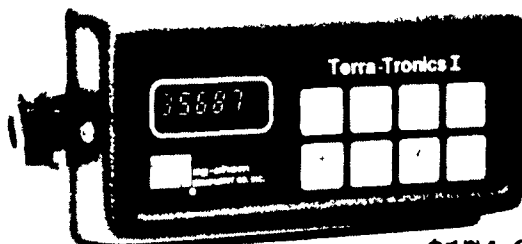
RD 3, Rt. 23 West
New Holland, PA 17557
PH: 717-656-2211



Your Complete Headquarters For Sprayers & Parts

TERRA-TRONICS I

Electronic Monitor Measures Working Acres And Ground Speed



\$174.60

- Easy-to-see digital readout
- Easy-to-operate touch sensitive keys
- Easy-to-install
- Operates with any field implement requiring acre measurement - pulled, mounted, or self-propelled sprayers, combines, etc.

We Also Stock A Complete Line of

TeeJet Sprayer Nozzles And Accessories

Pumps And Accessories

- Sprayer Hose
- Ball Valves
- Nylon Fittings
- Poly Tanks

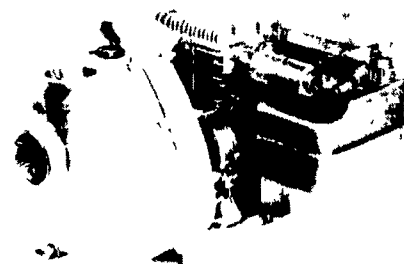
Pacor Self-Priming Centrifugal Pumps For Agriculture

Features:

- Self-priming to 20 feet (6.1 meters)
- Total heads to 80 feet (24.4 meters)
- Capacities to 166 U.S. GPM (628 liters per minute)
- Built in check valve
- Equipped with 2" female threaded connections, NPT

AgMiser 3 HP \$181.90

AgMiser 5 HP \$219.00



PAUL B. ZIMMERMAN, INC.

Box 128, R.D. 4, Wood Corner Rd., Lititz, PA 17543
1 Mile West of Ephrata

(717) 738-1121

HOURS

Mon Thurs, Fri 7-8:30
Tues Wed 7-5:30
Sat 7-4:00

• HARDWARE • FARM SUPPLIES • CUSTOM MANUFACTURING • CRANE SERVICE