

# Livestock market and auction news

## Lebanon Valley Livestock

Fredericksburg, Pa.  
Tuesday, April 23

Report Supplied by PDA

**CATTLE 196:** Compared with last Tuesday's market, slaughter cows unevenly steady; Slaughter bulls steady \$1.00 higher. Two High Choice slaughter steers 1265 & 1420 lbs. 57.50-57.75, Choice 2-4 1050-1325 lbs. 55.00-57.10, Few Good 47.50-55.00, Good & Choice holsteins 1110-1370 lbs. 50.00-52.50, Standard 47.50-49.75, few 52.85, Few Utility 39.25-40.50. Choice slaughter heifers one 55.00, Few Good 50.25-53.50, Few Commercial 39.25-47.00, Standard 42.60-45.00, Few 50.50, Few Utility 36.00-39.25. Few Breaking Utility & Commercial slaughter cows 40.60-42.85, One 51.00, Cutter & Boning Utility 36.75-40.50, few 42.00, Canner & Low Cutter 34.00-37.50, Shells down to 27.75. One Good slaughter bullock 51.00, Few Standard 48.00-49.50, few Utility 37.25-45.00. Yield Grade No. 1 1455-2070 lbs. slaughter bulls, 49.75-54.35, few 57.25, Few Yield Grade No. 2 1120-1545 lbs. 48.00-49.75.

**CALVES 180:** Vealers Standard & Good unevenly steady. Prime Two 88.00 & 92.00, Few Choice 76.00-89.00, Few Good 74.00-78.00, Few Standard & Good 120-140 lbs. 58.00-59.00, 90-120 lbs. 50.00-57.00, 65-90 lbs. 47.00-50.00, Few Utility 50-75 lbs. 38.00-47.00.

**FARM CALVES:** Holstein bulls 90-135 lbs. 64.00-84.00.

**HOGS 197:** Barrows & gilts weak \$2.00 lower. US No. 1-2 210-250 lbs. barrows & gilts 42.00-42.50, No. 1-3 210-240 lbs. 41.60-42.10, No. 1-3 105-200 lbs. 37.50-38.50. Sows mostly steady. US No. 1-3 265-480 lbs. sows 35.00-39.50, Few No. 3 490-555 lbs. 41.50-44.00. Few Boars 28.00-29.00, Few Light weights 32.00-35.00.

**FEEDER PIGS 6:**

**SHEEP 7:** Lot High Choice & Prime 27 lbs. Spring Slaughter Lambs 82.00, Lot Choice 19 lbs. 82.00.

**GOATS 4:** 22.00-43.00 per head.

## Hackettstown Poultry & Egg

Hackettstown, N.J.  
Wednesday, April 23

Report Supplied by Auction

Heavy Fowl: .30-.70.

Leghorn Fowl: .25-.55.

Bantams: .30-2.20.

Broilers: .65.

Roasters: .40-.50.

Roosters: .30-3.50.

Geese: .75-.90

Ducks: 1.10-1.25.

Rabbits: .70-1.55.

Pigeons: 2.20-2.40.

Guineas: 1.50-1.90.

Eggs

Grade A: White Jumbo X Lge. .57-.80, Brown 51-.80.

Grade A: White Large .42-.63, Brown 45-.60.

Grade A: White Medium .36-.55, Brown .34-.38.

Grade A: White Small .37.

## Jersey Shore, Pa.

Thursday, April 18

Report Supplied by Auction

Return to Farm Calf 60.00-81.00.

Good Veal 56.00-65.00.

Common Veal 44.00-55.00.

Choice Steers 58.00-60.50.

Good Steers 54.00-57.00.

Common Steers 46.00-53.00.

Commercial Cows 39.00-45.00.

Canners-Cutters 36.00-41.00.

Shells 32.00-38.50.

Choice Heifers 53.00-55.00.

Good Heifers 47.00-52.00.

Common Heifers 43.00-46.00.

Good Feeders 54.00-63.00.

Common Feeders 48.00-53.00.

Bulls 44.00-54.00.

Good Hogs 40.00-44.00.

Sows 33.00-37.00.

Roughs 20.00-23.00.

Eggs 20.00-49.00.

## North Jersey Livestock

Hackettstown, NJ  
Tuesday, April 23

Report supplied by auction

Calves- 14.00-82.00.

Cows 20.00-46.24.

Easy Cows 14.00-39.25.

Heifers 32.50-45.50,

Bulls 35.00-57.00.

Steers 41.75-57.25.

Hogs .18-.42.

Roasting Pigs, each 2.00-37.00.

Boars 33.50.

Sows .24-.38.

Sheep .11-.54.

Lambs, each 22.00-50.00.

Lambs, per lb. .42-1.17.

Goats, each 30.00-73.00.

Kids, each 10.00-40.00.

Total 894.

## Weekly Summary

Harrisburg, Pa.  
Friday, April 26

Report Supplied by PDA  
16 Livestock Mkts.

**CATTLE 7489:** Compared with 7706 head last week, and 8237 head a year ago. Compared with last week's market: Sl. steers steady to 2.00, spots 3.00 lower; Sl. heifers mostly steady to 1.00 lower; cows unevenly steady; bulls uneven, mostly steady to 1.00 lower. Sl. steers: High Choice & Prime 3-4 54.25-59.10, Choice 2-4 53.00-59.00, Good 47.50-55.00, Standard 45.00-49.00. Sl. heifers: Choice 53.00-58.00, Good 48.00-53.50, Standard 44.00-48.50. Sl. cows Breaking Utility & Commercial 39.00-43.00, Cutter & Boning Utility 37.00-41.50, Canner and low Cutter 31.00-37.50, Shells down to 20.00. Sl. bullocks: Choice 48.00-53.00, Good 45.50-49.75. Sl. bulls: Yield Grade 1 1000-2000 lb. 46.50-51.50, No. 2 900-1500 lbs. 41.25-47.50.

**FEEDER CATTLE:** Steers, Medium Frame 1 55.00-67.50, Large Frame 2 350-800 lbs. 45.00-49.50. Medium Frame 1 350-750 lbs. heifers 44.50-56.00. No. 2 300-650 lbs. 36.50-46.50, Medium Frame 1 350-750 lb. bulls 48.00-65.00.

**CALVES:** 3823. Compared with 3813 head last week, and 3786 head a year ago. Vealers mostly steady to 5.00 higher. Prime 100.00-118.00, Choice 80.00-100.00, Good 64.00-80.00, Standard & Good 110-130 lbs. 55.00-70.00, 90-110 lbs. 50.00-58.00, 65-90 lbs. 40.00-50.00, Utility 50-90 lbs. 35.00-45.00.

**FARM CALVES:** Hol. bulls 90-

## Maryland Tobacco

Week of April, 22

	This Week	Same Period, '84
Total Pounds	3,913,332	3,844,391
Net \$ Paid	\$5,359,762	
Daily Ave./Cwt.	\$136.00	\$78.64
Lbs. for Season	21,857,974	22,213,415
Net \$ Paid	31,261,497	\$24,717,319
Season Ave./Cwt.	\$143.02	\$112.27
Next Week 1 million lbs.		

125 lbs. 50.00-89.00. Hol. heifers 90-130 lbs. 55.00-68.00.

**HOGS:** 7274. Compared with 6886 head last week, and 7176 head a year ago. Steady to 1.50 lower. US 1-2 210-245 lbs. 41.50-43.50, 1-3 210-250 lbs. 40.00-42.00, 2-3 220-285 lbs. 38.00-41.00, 1-3 150-200 lbs. 37.00-40.00; Sows mostly steady to 2.00 higher. US 1-3 300-650 lb. sows 35.00-43.00; 2-3 300-700 lbs. 32.00-38.00. Boars 25.00-33.50.

**FEEDER PIGS:** 1121. Compared with 796 head last week, and 1255 head a year ago. Mostly steady to 4.00 lower. 1-3 20-35 lbs. 17.00-36.00, 35-50 lbs. 33.00-45.00, few 50-80 lbs. 40.00-54.00 per head.

**3 GRADED FEEDER PIG SALES:** 2249. Compared with 2000 head last week, and 2253 head a year ago. Steady to 12.00 lower, spots to 20.00 lower. 25-40 lbs. 90.00-110.00, 40-50 lbs. 80.00-104.00, 50-60 lbs. 74.00-101.00, 60-75 lbs. 70.00-87.00, 2-3 40-50 lbs. 71.00-81.00.

**SHEEP:** 818. Compared with 746 head last week, and 590 head a year ago. Spring sl. lambs steady to weak. High Choice & Prime 40-110 lbs. 75.00-85.00, Choice 25-85 lbs. 70.00-82.00.

## Chambersburg Livestock

Chambersburg, Pa.  
Thursday, April 25

Report Supplied by PDA

Sl. steers: 45.50-49.75, few Standard 45.00-46.75, Sl. heifers: few Choice 50.85-52.85. Sl. cows: breaking Utility & Commercial 40.25-43.35, Cutter & Boning Utility 38.85-42.00, Canner & low Cutter 35.00-39.00. Sl. bulls: Yield Grade 1 1025-1935 lbs. 47.35-53.85.

**FEEDER CATTLE:** Large Frame No. 2 390-1000 lbs. steers & bulls 40.00-47.00.

**CALVES:** 338. Few Choice vealers 80.00-93.00, few Good 70.00-78.00, 75-105 lbs. 50.00-58.00.

**FARM CALVES:** Hol. bulls 90-125 lbs. 60.00-88.00; Hol. heifers 90-110 lbs. 56.00-68.00.

**HOGS:** 66. Few lots US 1-3 210-230 lbs. 40.00-41.00, Barrows & Gilts, couple lots 2-3 265 lbs. 38.00-39.50. US 1-3 325-480 lb. Sows 32.00-36.50.

**FEEDER PIGS:** 25. Couple lots US 1-3 25 lbs. feeder pigs at 26.00 per head, lot 40 lbs. 35.50 per head.

**SHEEP:** 7. Lot Good 80 lb. Spring Sl. Lambs at 47.00.

**GOATS:** 4.

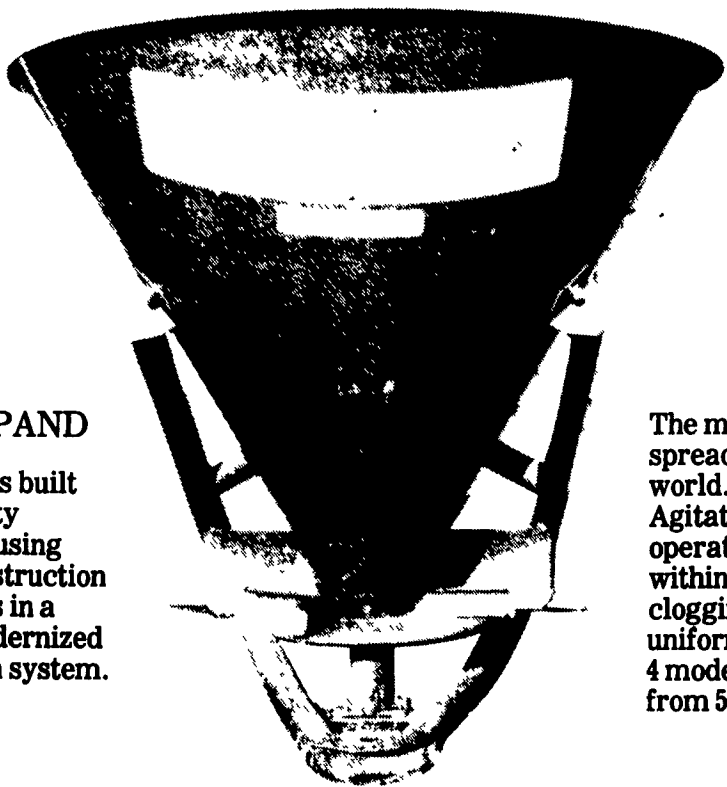


**NEED SOMEONE WHO CAN FILL THE SHOES?**

Try A Help Wanted Ad In Classified.

Phone: 717-394-3047 or 717-626-1164

## EUROSPAND FERTILIZER SPREADER



### EUROSPAND

Spreader is built with quality material, using sound construction techniques in a highly modernized production system.

The most sold spreader in the world. Agitator included, operating levers within reach, no clogging for uniform spreading. 4 models available from 500 to 1500 lbs.

## JOSEPH SWANTAK, INC.

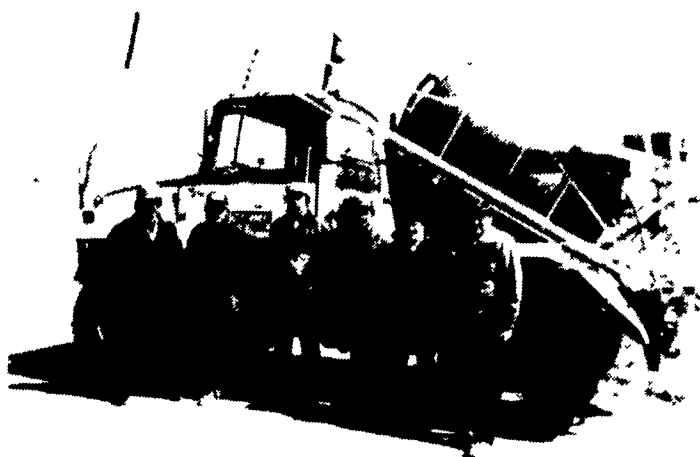
Box 93, Delhi Stage

Oneonta, NY 13820

(607) 432-0891

Dealer Inquiries Invited

## PEOPLE Make The DIFFERENCE



**Our Custom Application Team Is Qualified And Trained To Give You The Quality Job You Deserve!**

These men all have attended the Penn State custom applicator workshop.

They are from left to right:

Gordon Long, Glenn Long, Dave Brubaker, Steve Lehman, Dave Swarr, Marlin Martin.

## ORGANIC PLANT FOOD CO.



BULK BLENDS

MASTER FARMER

ANHYDROUS AMMONIA

2313 NORMAN ROAD, LANCASTER, PA  
PHONE 717-397-5152

Hours Monday thru Friday 7 00 to 4  
Saturday 7 00 to 12 00