

FANNIE L. LEHMAN ABSOLUTE PUBLIC AUCTION SELLING EVERYTHING WITHOUT RESERVE

125 Approx. Acre Sandstone Farm
FINE ANTIQUES, FURNITURE,
HOUSEHOLD GOODS, VEHICLE
QUILTS, FINE CHINA

SPECIAL NOTE!!
LIKE NEW
1977 CHEV. NOVA CAR
4-Door, 3 Speed
5,592 Original Miles

SATURDAY, MAY 11, 1985
STARTING AT 8:30 A.M.
REAL ESTATE AT 1:00 P.M.

Located Along; Colebrook Road Elizabethtown, Pa. Directions Take Route 283 West of Lancaster, Pa. to Elizabethtown Exit. Take Route 743 North Towards Hersheys Turn on Colebrook Road. "Watch For Auction Arrows"
REAL ESTATE WILL BE SOLD TO
THE HIGHEST BIDDER

R.E. Terms: 10% Down Day of Auction Balance Within 30 Days. Free And Clear Deed Will Be Guaranteed

Real Estate Approx. 125 Acre Sandstone Farm
Conewago Township Dauphin County
Approx. 85-90 Acres Tillable Remaining In Woodland and Pasture
Hundreds of Feet of Road Frontage
1 Wrap Round Porch

1-2½ Story 11 Room Frame House, Attic, Basement, Full Bath, Water & Septic, 5 Bedrooms, Kitchen, Oil Heat, Dining, Living, Parlor Rooms, 1 Car Frame Garage, Frame Animal Shed.

1 2½ Story Frame L Shape House, 6 Bedrooms Upstairs, 7 Rooms Downstairs, 2 Rooms Attic, 4 Rooms in Basement, Oil Heat. There Is No Barn Because Of Fire But There Are Other Farm Related Buildings. To Inspect Real Estate Call

JOSEPH LEHMAN 717-533-2694
FREDRICK L. ENGLE 717-569-8245
JACOB ENGLE 717-426-3739
OR AUCTION FIRM

*RARE

25 Oval Lap Robes & Square Braided Rugs w/Rare Designs of Animal & Floral Patterns, 5 Blanket Chest, Grained 4 Drawer Chest, *2 Strap Hinge Blanket Chest w/Bracket Feet, 1739 German Bible, Featherstick, *Low Dry Sink Nice Condition, Pine Wood Chest, Baskets, Quilt Patterns, Wool Blankets, Shawl Tablecloths, George Washington Tapestry, Comforts, *1838 Mary Lehman Coverlet (Mint Condition), *Multicolor Flower Leaf Star Coverlet, *Approx 30 Good Quilts, Block Quilt, 4 Multi Block Quilts, Checker Block Quilt 3 Dresden Plate Quilts, Block Quilt, Friendship Quilt, Irish Link Quilt, 7 Quilt Tops; Red Blue Geometric Coverlet Homespun, Quilt Patches, Comforts, Embroidered Quilt Camel Back Trunk 2 Good Stipple Grain Blanket Chest Dovetailed Chests Dome Child's Chest Early Stencils Oak Clawfoot Library Table Extremely Early Advertising Rice's Peerless Drexells Humphrey's Acme Turkish Dr Schenck's German Cologne Enameline Firewood Hand Cultivators Coal Sump Pump

14 Various Kerosene Lights

4 Leg Dropleaf Table, Nice Jelly Cupboard w/High Board Nicely Grained Flour Chest Canning Jars Cameras Redware Pottery Sunbeam Mixer w/Bowl Market Baskets Floorlights Goldleaf Beveled Mirror Clawfoot Server w/Mirror Morris Chair 5 Pc Empire Parlor Set Oak Treadle Sewing Machine 2 Fancy Oak Sideboards Reverse Painting on Glass of Capital Round Oak China Closet w/Clawfeet 2 Red Stain Acorn Rope Beds Oak Youth Bed 3 Sets of 6 Good Early Decorated Plank Bottom Chairs w/Original Paint 4 Drawer Sheraton Cherry Chest of Drawers 20 Rolls of Rag Carpet Press Back Spindle Back Oak Rocker & Chair 6 Oak T Back Chairs 3 Nicely Early Painted Grandfather Rockers Hanging Kerosene Light w/Milkglass Shade Quilting Frame Early Sprawl Leg Table Child's Oak Rocker 2 3 Pc Oak Bedroom Suite's (Complete) 5 Spindle Windsor Chair Oak Dresser Servers Metal Bed, Sm Tilt Top Table End Tables Waffle Iron Deck of Cards Dinner Bell Wrench Tools Sawbuck Single Tree, Kerosene Lights Ice Tong, 5 Washboards 2 Good Early Tramp Art Mirrors w/Porcelain Knobs Approx 50 Crocks Depression Glass Pink Berry Set, *Early Milkglass Hen Rooster Fox on Nest's Purple Carnival Glass Copper Lustre Wooden Tub Lard Kettle, *Blue Sponge Bowl *Kitchen Stick Spatter, Iron Kettles, L Challenger Dec Ironstone Teapot, Large Collection of Tumblers, *8 Transfer ABC Plates Bristol Vases, Gruets, Early Adv Catsup Bottles, Eye Glasses, Flo-Blue Cups, Saucers, Dishes 6 Fancy German & Bavaria Vegetable Dishes Ironstone Plates & Platters Wildlife Scene on Plates 6 Oriental Plates, Good Lead's Cup & Saucer Good Historian Blue Dishes Snowflake Plates Cup & Saucer, Versailles Dec Ironstone E Wood & Son Dec Ironstone, Large Set Mintone China *20 Ironstone Caledonia Dec Ironstone Antiquarian Dec Ironstone Many Cups & Saucers, Good Early Valentine's Platform Scales Flat Iron, Sherberts Goblets 13 Cups & Saucers Rare Red Peafowl Spatter Early Transfer Salapion Cup & Saucer (Deer in Wood Scene) Soft Paste Cup & Saucers Pressed Glass, Agateware Dippers, Set of Buffalo Pottery Woven Baskets Hot Oven China Ware, Iron Skillets, Sm Dome Chest Blue Spanish Lacc Syrup Jug, Lge Collection Of Silverware Coin, Rodgers & 3 Prong Etc. *84 Good Colored Printed Feed Bags (Local Adv) 200 Other Feed Bags, 8 Counterpane, Approx 30 Good Quilts (Various Sizes, Colors) Good Early Hinges, *Frog Leg Hinge, 4 Wheel Spring Wagon, Grain Cradle, *4 Wheel Wooden (Gruber Type) Farm Wagon Cultivator, Hames Horse Harness, Milk Cans, Lawn Rotary Mowers, Iron Troughs *New Holland Gasoline Engine Good Early New Holland Painted Box, Easy Wash Machine, Copper Liner Cast Iron Kettle, Hand Garden Tools, Bench, Pitcher Pump, Square Oak Table Admiral Refrigerator (New) *Tall Empire Case Shelf Clock, Monarch 4 Burner Stove Pots, Pans Cooking Utensils Pictures, *OG Mirror, Early Tin Bisquit Lunch Kettle 1858 Jars Pints, Quarts, Etc., *Wood Chest (Large)

PARTIAL LISTING

Terms: Cash or Approved Check

Auction For
FANNIE L. LEHMAN
JOSEPH G. LEHMAN P.O.A.
717-533-2694

Auction Conducted By The
J. Omar Landis Auction Service
Jay M. Witman
Box 501, Ephrata, Pa. 17522
717-627-0789 or 717-665-5735

"BRING CHAIRS AUCTIONS WILL BE CONDUCTED UNDER TENTS."

Food Served

Rural growth shows

WASHINGTON — For a brief time in the late 1960's and early 1970's, rural areas were booming. Both jobs and people flocked to rural America in numbers rarely seen before.

Not only did manufacturing job growth in rural areas outpace such growth in urban centers, but population spurted, according to a recent issue of FARMLINE magazine, published by the Department of Agriculture.

"Associated with the rapid employment expansion was the well-publicized revival of rural population growth," says economist Herman Bluestone of USDA's Economic Research Service. "The population growth rate was higher, one and a half times as much, in fact, in rural and small town communities as in metro areas during the 1970's."

Income disparities between metro and nonmetro areas were reduced. Rural housing improved in many areas. However, rapid development was also accompanied by strains on rural government services, higher costs of living, and other changes that were unwelcome to some

long-time rural residents.

Although a subsequent slowing of nonmetro economic growth cooled the feverish pace of change, rural communities have been largely reshaped over the past four decades. According to Bluestone, job gains in manufacturing and services, coupled with declines in agriculture, have transformed the face of rural America.

"By 1980, manufacturing, construction, and service-producing industries had come to dominate economic activity in nonmetro areas much as they do in metro areas," he says.

But it's unlikely that nonmetro areas, overall, will match job creation in urban communities in the 1980's, Bluestone says.

"Employment growth in the nation's rural and small town communities is expected to continue lagging behind growth in metro areas during the rest of the decade."

The reason: Non-metro areas still depend more than metro areas on slow-growing non-durable goods manufacturing, agriculture, and mining than they do on fast-growing, service businesses. The

growth outlook is particularly unfavorable for nonmetro areas where farming dominates economic activity, such as parts of the Midwest. Farming communities there suffered a decline in employment during the late 1970's and early 1980's.

"However, rural employment growth during the 1980's will probably be more rapid than in the three decades following 1940, when nonmetro areas were adjusting to the large job losses in agriculture and other natural resource industries."

Between 1940 and 1970, he says, "non-metro areas were simply unable to generate enough new jobs to fully absorb additions to their labor force. As a result, many rural residents migrated to metro areas to find jobs."

In the 1950's, rural communities gained one job in manufacturing for every three they lost in the natural resource industries. By the late 1960's, gains in manufacturing offset job losses in natural resource industries.

Given the rather weak performance of non-metro areas since 1976, Bluestone says, "the question is raised whether the relatively strong nonmetro growth of the late 1960's and early 1970's was just a temporary phenomenon rather than the beginning of a long-term trend."

Regional differences, of course, add some variety to this picture.

The country's western

and southern rural sections sported more rapid job growth than the Midwest and Northeast nonmetro regions during the late 1970's and early 1980's.

In fact, economic disparities in years ahead may be more pronounced on a regional rather than rural-urban basis. That appears to be one lesson growing out of the country's experience during 1976-82, says Bluestone.

In that 6-year span, economic conditions deteriorated most in the Midwest and help up best in the West. Even within the Midwest, the eastern manufacturing belt was more severely affected than the western half of the region.

"In the nation's Northeast, job growth lagged behind the national average, and there was a large exodus of discouraged job seekers from the labor force," says Bluestone. "By contrast, the South had above-average employment growth but also an above-average increase in the rate of unemployment, as more persons entered the labor force than the employment growth could accommodate."

He adds that labor market conditions in the Midwest declined more in relation to other regions during the 1979-82 period of economic stagnation than during the preceding 1976-79 upturn.

"Even so, signs of economic distress in the Midwest emerged well before the 1979-82 recession."

PUBLIC SALE

USED LUMBER, TRACTOR,
HOUSEHOLD GOODS & BOAT
FRIDAY, APRIL 26, 1985

At 9:00 A.M.

Located along Rt. 897 between Terre Hill and Fivepointville.

Chris Craft 14 ft. Fiberglass Boat, Trailer and 65 h.p. Motor; John Deere A Tractor; John Deere Disc; Bush Hog Mower; David Bradley Garden Tractor with Attachments; Billy Goat Lawn Sweeper; Toro Snow Blower; Roper 22" Self-propelled Lawn Mower; other Lawn Mowers; 600 amp A.C./D.C. Portable Welder with 6 Cyl. Engine; Commercial Meat Grinder; New Metal Cutting Band Saw; 350,000 BTU Heater; Acetylene Torch and Tanks; Air Compressor; Large Chain Hoist; Evinrude Twin 75 h.p. Boat Motors.

LUMBER

6"x6" Random Length; 2"x6" R.L.; 2"x4" R.L.; 1"x6" R.L.; Tongue & Groove Panels; Tongue and Groove Roofers, thousands of feet; Plywood; 600 pieces of Tin; 200½ Sheets Green Fiberglass Sheets; Barn Doors, all sizes; other Lumber.

9 Piece Hard Rock Maple Dining Room Set; Gas Stove; B. & W. T.V.; Toaster; Mixer; Utility Cabinet; Adding Machine; Lawn Trimmers; 8 DAY OAK KITCHEN CLOCK; Mantel Clock; Electric Fireplace Insert; Kerosene Heater; Ice Cream Freezer; Electric Motors; Electric Motor Trans.; Hand Crank Pulleys; Trailer Hitches; Carts; Gas Engines; Old Butter Churn; Electric Switch Boxes; Egg Baskets; Car and Truck Items.

2 Large Radios; I-Beam; Oil; STP; Grease; 30 gal. Hyd. Gear Oil; 55 gal. Hyd. Fluid; Electric Cords; V-Belts; Heat Tape; Large Tires and Rims; Car Tires; Diamond Plate; Starters; Electric Whet Wheel; Electric Fans; Old Jugs and Crocks; Cherry Seeder; Corn-sheller; Horseradish Making Machine.

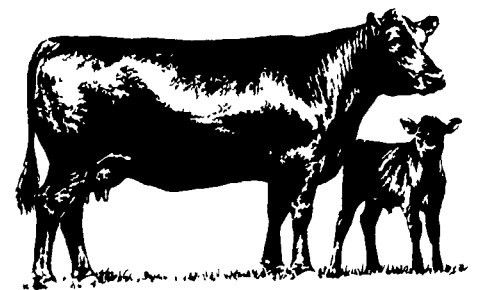
Auct's. Note: Tractor, Boat and Implements to be sold approximately 12:30 P.M.

Terms by
ADDISON KELCHNER

Aucts.: Lester O. Weaver,
AU-982L

Barry D. Wanger
Audrey E. Wanger

Not Responsible for Accidents
Refreshments Available



AUCTION AT HATFIELD GALLERY AUCTION

Fairground Rd., Hatfield
THURS., APRIL 25, 6 P.M.

Inspection 3 P.M.

Antiques, furniture, china & household goods, ball & claw lamp tables, pie cupboard, tilt top tables, Victorian furniture, Persian screen with 4 panels, Queen Anne sofa & chair, wing chair, Cherry dough box, Cedar closet, Oak sideboard, marble top washstand, Empire chest of drawers, Oak bow side china closet with glass shelves & mirrored back, Governor Winthrop type slant desk, round paw foot oak table, cane seat rocker, Bentwood chairs, benches, Victorian mirror, lantern, kerosene lights. CHINA: Canton, H&C, A.Boos, BW&G, Majolica carnival glass, yellow & black spatter platters, rope leg table, oak carved chairs, Wertz cracker box, treadle sewing machine, large round maple table with captain chairs, pine kitchen cupboard with glass doors, wood fence for train set, glassware & much more.

Terms: Cash.

Auctioneer: Paul G. Derstein
Lic. AU0002190
215-368-6646