

## Holstein tops Northwest All-Breeds Calf Sale

BY NANCY KUNICK  
Staff Correspondent

MEADVILLE — Thirty-six heifers representing six dairy breeds went up for bids Saturday, April 13, at the Northwest Pennsylvania All-Breeds Calf Sale, held at the Crawford County Fairgrounds.

A Holstein heifer consigned by Queens Manor, Jamestown, topped the sale at \$900. Haigsee Ultimate Janet, an October calf with a good pedigree, was purchased by Don Caldwell, Saegertown.

Janet's dam has a lifetime record of 104,555 milk and 3,889 fat. She was sired by Quality Ultimate.

Volume buyer of the sale was Rob Dickson, who took home six

calves to Cochranon for a total of \$2,065. Marty Gessner of Springboro, purchased four calves totalling \$1240.

"Don't look at this as an expense," stressed auctioneer Sherman Allen as the heifers entered the sale ring, "it's an investment in the future."

The sale average on 36 head reached \$371.

The second high selling consignment, also a Holstein, was Ebe-Tide Edie Star, owned by Charles R. Morrell of Cochranon. The six-week-old calf sold for \$710.

Irons Luney Tune, a Brown Swiss heifer consigned by Janet Irons of Smethport, claimed the

highest amount paid for any colored breed calf at the sale. The January 1985 heifer was purchased by Chad Nicolls of Conneautville for \$690.

In the Jersey breed, Don Graff of Centerville, placed the top bid of \$400. Sold by Ari Beedle, Meadville, this heifer showed her dam having a record of 13,869 milk, 620 fat, and 484 protein as a three-year-old.

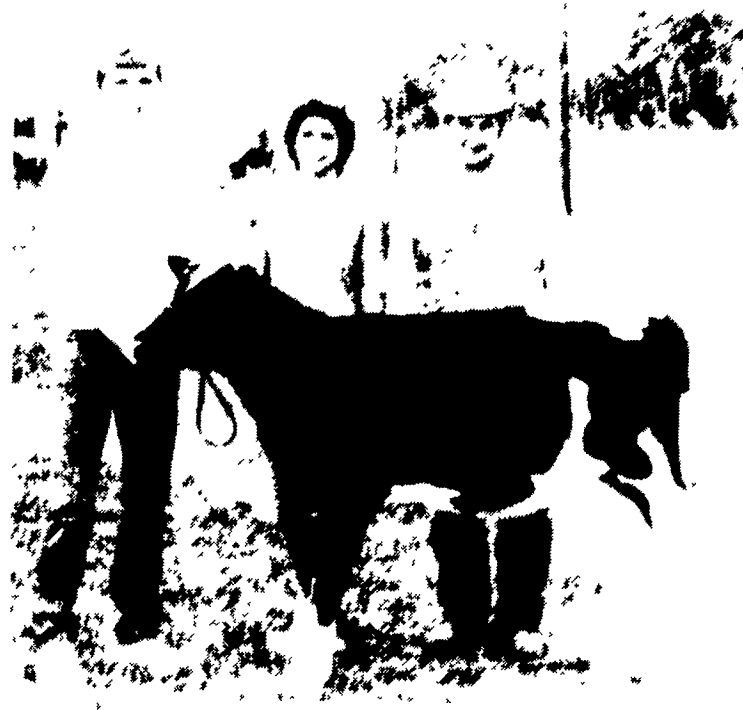
High price in the Guernsey breed was \$370 for an October calf consigned by Trotacre Farms, Enon Valley.

Baytree Spirit Helga, a late January Ayrshire calf consigned by Warren Thomas, Emlenton, brought \$350.

The only Milking Shorthorn in the sale was consigned by John Burns of Saegertown and sold for \$310.

The Northwest Pa. All-Breeds Calf Sale was sponsored by area dairy farmers and the Crawford County Cooperative Extension Service.

Auctioneers were Earl Nicolls and Sherman Allen, with Gary Oakes reading pedigrees.



As high seller at the Northwest Pa. All-Breeds Calf Sale, Haigsee Ultimate Janet commanded \$900. From left are: Don Caldwell, buyer; Nancy Mitrich, Crawford County Dairy Princess; and Ed Doeberiener, consigner.

## Dairy goat seminar slated

CREAMERY — A special Dairy Goat Seminar has been scheduled for Saturday, April 27th to be held at the Montgomery County 4-H Center in Creamery. The program is open to all interested persons including current and potential producers and is being sponsored by the Cooperative Extension Services in Southeast Pennsylvania.

The theme for the seminar is "Marketing-Milk and Kids". Larry Sidorowicz, Milk Sanitarian with the Pennsylvania Department of Agriculture will start the program at 10 a.m. with "Licensing a Dairy Goat Operation". He will explain what is involved in the procedure, sanitation measures needed and economics involved.

The next speaker will be Doug Newbold of Malvern who produces and sells cheese under the name of "Graystone Chevrete" in many of the cheese shops in the Philadelphia area. A former chef at "The Commissary" in Philadelphia, who has developed a quality product and a good market, Newbold will explain some of the pros and cons of marketing cheese and share personal experiences on

the business angle of the dairy.

Following the lunch break, Montgomery County Agricultural Agent Joseph Way will talk on "Maintaining Milk Quality" as it relates to the farm, store and consumer and how it is affected by management concerns such as feeding, sanitation, odors, light and refrigeration.

At 2 p.m. a panel of producers will share their ideas and experiences on marketing milk and kids, why they are involved in a goat dairy and management techniques. One of the producers will be Jake Fisher of Windy Hill Goat Dairy in Manheim who has had over thirty years of experience in raising goats. He markets milk privately and to The Goat Works in New Jersey. The seminar is scheduled to conclude at 3:45 p.m.

Preregistration should be made by April 22. The course fee is \$3 per person without lunch and \$7 with lunch provided. Checks are payable to the "Montgomery County Extension Service" and should be sent to Nancy Kadwill, Box 20, 1015 Route 113, Creamery, Pa. 19430.

## Pittsburgh meat company sentenced for violations

WASHINGTON, D.C. — A Pittsburgh meat and poultry processing firm pleaded guilty and its president pleaded no contest in U.S. District Court to 32 charges of violating federal meat inspection laws and other crimes.

Churchill Meat Co. admitted selling and transporting adulterated and misbranded meat food products, misrepresenting meat products as officially graded and engaging in mail fraud. The firm was fined \$24,000.

The firm's president, Jack Lebovitz, pleaded no contest to the

same charges and received a \$19,000 fine and four concurrent nine-month jail sentences. The court stipulated he must serve three months in prison.

"The company had illegally used soy in ground beef and veal patties to increase their bulk and weight," said Donald Houston, administrator of USDA's Food Safety and Inspection Service. "Because ingredients found in products must appear on product labels, the company was also guilty of misbranding."

"In addition, the company sold meat and poultry products to various institutions in Allegheny County, Pa., and misrepresented them as graded by USDA," Houston said.

The mail fraud involved the company's acceptance of eight checks from Allegheny County for those products.

Under the Federal Meat Inspection Act, USDA ensures that all meat and poultry products are safe, wholesome and accurately labeled.

# PIGIPLAN = PRODUCTIVITY = PROFIT

Pigiplan's Early Weaning Program  
Increases Pigs/Sow/Year And

PUTS MORE DOLLARS IN YOUR POCKET

Pigiplan's Worldwide Experience With Pigibox™  
In Weaning Pigs At 14-21 Days Has Proved To  
Be The Most Effective Approach To  
Increasing Profits

Look At The Figures Below...How Do You Compare?

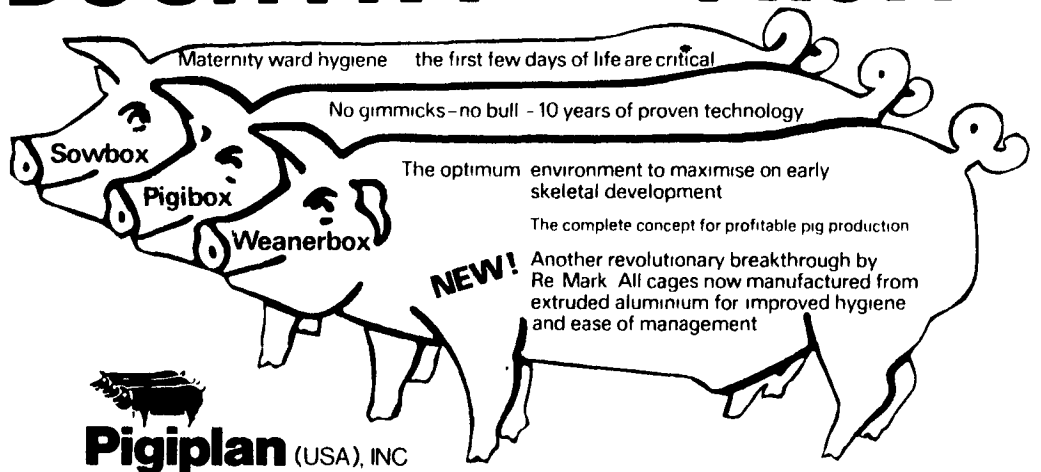


TABLE 1 J.H. BRITT NORTH CAROLINA STATE	TABLE 2 INDEPENDENT HOG PRODUCER, NORTH CAROLINA	TABLE 3 MEAT & LIVESTOCK COMMISSION ANNUAL REPORT, 1984
Effect of Pigs/Sow/Year on Returns To Overhead On A 900 Sow Unit	No. of Sows: 2,000	Herds Weaning At 14-18 Days
No. of Pigs/Returns/Sow/Year	Ave. Wean Ave..... 14 Days	Ave. No. of Sows & Gilts..... 255
12 ..... - \$1,085	Ave./Wean/Sow ..... 9.1	Ave. Weaning Ave. (Days) ..... 17
14 ..... + \$2,434	Farrowing Rate ..... 80%	Live Pigs Born ..... 10.36
16 ..... + \$15,353	Pigs/Sow/Year ..... 19.5	Pigs Weaned/Litter ..... 9.3
18 ..... + \$41,191		Litters/Sow/Year ..... 2.38
		Pigs/Sow/Year ..... 22.1

TO FIND OUT MORE ABOUT  
THIS PROGRAM, CONTACT:

SWINE & POULTRY SYSTEMS SPECIALISTS

# FARMER BOY AG.

INC.

410 E LINCOLN AVE MYERTOWN PA 17067 PH 717 866-7565

BEST IN DESIGN, PRICE AND EXPERIENCE