

Crawford Holstein breeders tour Northeast dairy farms

MEADVILLE — Thirty-eight dairy farmers and their families enjoyed this year's Crawford County Holstein Tour to Northeastern Pennsylvania. The Crawford dairy producers recently visited three Holstein dairy farms and Sire Power, Inc., Tunkhannock.

First stop on the tour was at Yules Pride Farm, operated by Richard and Virginia Yule, Millville. They relocated to Millville from New York state three and a half years ago and began a registered Holstein operation.

Unique to the Yules Pride Farm is the small amount of land on the

farm. The Yules own only 10 acres of land, buy all their feed, sell the manure and concentrate all their efforts on breeding good cattle and milking.

The Yules Pride herd averages 20,400 pounds milk and 722 pounds fat and has a BAA of 106.4. They do a lot of embryo transfer work and sell registered Holstein cattle.

The Pen-Col Farm, of Dennis and Lois Wolff and Family, was the second stop on the tour. Wolff's farm 600 to 700 acres located on seven different farms and have about 500 head of registered Holstein cattle. They milk 120 cows with a herd average of 17,000

pounds of milk and 700 pounds of fat.

The Pen-Col calves are raised in a separate calf nursery. The Wolff's also are heavily involved in embryo transfer work, flushing cows on a weekly basis.

The third stop on the tour was at Mun-Cre Farm, operated by Lester Poust and family, at Muncy. Pousts farm 200 acres and milk 60 registered Holstein cows

with a herd average of 17,800 pounds milk at 4.0 percent test and 730 pounds fat.

The Pousts' BAA is 108. They have 120 head of young cattle and raise a number of bulls and also do some embryo transfer work.

Finally, the Crawford County dairymen stopped at Sire Power, Inc., Tunkhannock. The group had a chance to see the 340 bulls housed at Sire Power for A.I purposes.

A Sire Power member organization founded in 1938 was the first A.I. organization in the United States. The Sire Power goal is "to breed better, more profitable cattle, by offering a wide selection of genetically superior sires at the fairest prices possible."

This year's annual Crawford County Holstein Tour was organized by J. Howard Caldwell, of Saegertown.

Eliminate Fencing Problems

WITH

ARC

SOLAR FENCING



The Arc 12 Solar system allows us to safely run our stallions next to the mares eliminating time and labor on try backs
Harold S. Winder, Quality Quarter Horses, Oskaloosa, Iowa

- Eliminates fence sagging
- No staples or wire clips
- Adjustable enclosed spring assembly for each wire
- Optional site rails™
- Optional Arc 110 Volt multi wire unit
- Installed by trained dealers
- Fully guaranteed by warranty

The ARC 12 Fence is a new concept in livestock fencing. Using free energy from the sun, the solar powered solid state unit keeps a powerful 12 volt battery charged for effective shocking. Special non-conductive white plastic posts are attractive and extremely durable, capable of being bent 45° and returning to their original position. Using smooth 12 1/2 gauge high tensile wire eliminates injuries from barbed wire.

Manufactured by

SOLAR FENCING, CO.

Box 557 Hwy 63 South, Oskaloosa, Iowa

Phone (515) 671-0401 Iowa (800) 247-8150 out of state with

Representation in 28 States 12 Foreign Countries

We Still Have A Few Choice Distributor And Dealerships Available

KEYSTONE SOLAR FENCE CO.

R.D. 2, Box 148
Watsonstown, PA 17777

717-649-5321

NOTICE TO DEFERRED EQUITY HOLDERS IN THE MATTER OF THE DISSOLUTION OF THE DELAWARE VALLEY FARMERS' COOPERATIVE ASSOCIATION, INC.

SUPERIOR COURT OF NEW JERSEY
CHANCERY DIVISION, HUNTERDON COUNTY
DOCKET NO. C 412 84 E

Pursuant to the Order of the Honorable Virginia A. Long dated June 26, 1984, notice is hereby given to all deferred equity holders with deferred equity of more than \$15.00, that they will receive a final pro-rata payment towards their deferred equity provided they mail to the firm of BERNHARD, DURST & DILTS, ESQUIRES, 100 MAIN STREET, FLEMINGTON, NEW JERSEY 08822, postmarked by June 3, 1985, a signed statement setting forth their current mailing address and the total deferred equity which they claim they are entitled to. The amount actually paid to those responding will depend on the number of individuals responding, the final administrative expenses and costs, and the total funds available for distribution. In the event there is a conflict between the total deferred equity claimed by an equity holder and the records of the Delaware Valley Farmers' Cooperative Association, the lesser amount shall be used in determining the amount to be paid. Equity holders who have \$15.00 or less due them will not be entitled to any distribution.

Equity distribution will not occur for some time and accordingly deferred equity holders are requested not to contact the firm of Bernhard, Durst & Dilts other than to mail their written claim as set forth above.

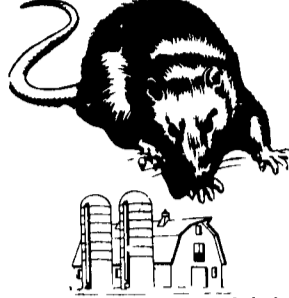
BERNHARD, DURST & DILTS
Attorneys for Delaware Valley
Farmers' Cooperative Association, Inc.

BY:

George M. Dilts
GEORGE M. DILTS

Dated: March 29, 1985

ATTENTION FARMERS...
FREE ESTIMATES ON RODENT CONTROL



RODENTS carry diseases which can endanger the health of your poultry flocks. Your business is raising them. Ours is protecting them.

We Specialize In Sanitizing And Disinfecting Poultry Houses

Fhrlich

Since 1928

Pest control is too important to trust to anyone else

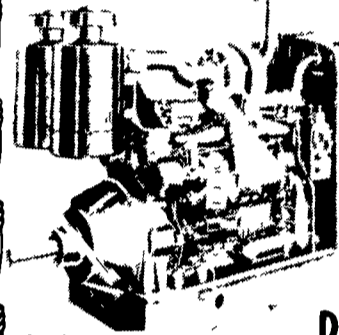
Lancaster, PA
397-3721

Lewistown, PA
248-0983

State College, PA
237-7687

DIESEL ENGINE SERVICE

- 671N Power Unit, Rebuilt, 185 H.P.
- 471N Power Unit, Rebuilt, 152 H.P.
- 6V71 Power Unit, Rebuilt, 185 H.P.
- 453N Engine, Rebuilt, 127 H.P.
- 471N Engine, Rebuilt, 152 H.P.
- 1160 Cat Engine, Rebuilt, 225 H.P.



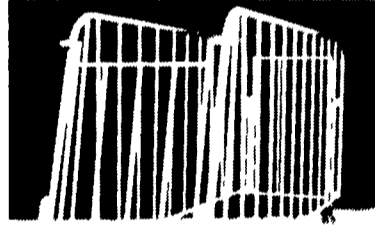
GM Diesels 40-440 HP

Tune-Up And Rebuilding

Now & Used Parts For Detroit Diesels

RD 3, Pleasant Valley Rd.
Ephrata, PA 17522
(717) 733-3890

INVEST IN THE BEST!



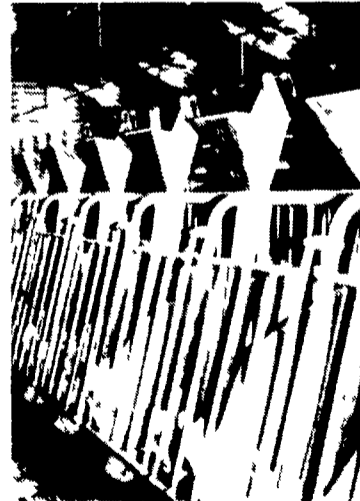
SOLID GESTATION STALLS

- 1" Solid Steel Frame
- 1/4" Plate Steel Floor Tabs
- Sloping Front
- 5/8" Vertical Rod
- Top Hinge Front Gate
- Rear Gate Two Way Swing

Weight Per Unit
Complete Stall w/Back & Front Gate - 125 Lbs.

SUPRISE FEEDING SYSTEM

- Less Stress For Hogs & Man
- Manual Trip For Each Row
- Less Wear On Equipment



STAINLESS STEEL GESTATION TROUGH

- Longer Life • Sanitary - Easier to Clean

We Also Design & Manufacture

- Solid Gestation Stalls
- Solid Nursery Fencing
- Solid Finishing Fencing
- Stainless Steel Feeders
- Surprise Feeding Systems

Get The Best For Less At:

TRI-COUNTY

PHONE
717-274-3488

608 E. Evergreen Rd.
Lebanon, PA



SWINE SYSTEMS