

MAILBOX MARKET

For Sale - 9N Ford tractor, good shape. \$1,850. Snapper riding mower, 5 h.p. \$375. Leb. Co No Sunday Calls. 717-866-2246

For Sale - 4 btm. 16" AC auto reset plow \$400. Horse drawn farm wagon w/wooden wheels. \$100 Lanc. Co. 717-733-3446

For Sale - 38 Holsteins w/good dairy type mostly 2nd and 3rd calf. Also corn silage. 717-776-6150

For Sale - Clean MF 175 diesel, \$5,900. Dunham model 22 loader, \$1,800. Lanc/Cambria Co. 814-344-8659 or 717-354-8832

Wanted - 5 or 6 cubic ft freezer, in good condition, please. Reasonably priced. Berks Co 717-933-4318

For Sale - 3 ph Lilliston 7-6 mower, new deck, belts and blades. \$850. or B.O. Queen Annes Co. 301-556-6116

For Sale - 4 row IH 455 corn planter w/insecticide, good cond., Freezer; Wanted - Potato planter, good cond. Schuylkill Co. 717-345-3359

Wanted - Hot Air Furnace, must be good condition. Lanc. Co 215-267-6427

For Sale - 671 Detroit, complete. \$1,250. 3 cyl. P and H diesel. \$750. 140-6K Wauk for parts. \$250 Cecil Co., MD 301-378-2785

For Sale - NH 66 baler w/engine, working condition. Lycoming Co 717-546-6901 after 8 p.m.

For Sale - Cattle headgate, new never used, \$240.; Tobacco bale box, good condition. \$85 Lanc. Co. 215-445-4786

For Sale - 684 IH, like new w/T.A., 2300 hrs Union Co. 717-966-3821

For Sale - MM 445 tractor w/Oliver 1610 loader, live PTO w/15 g.p.m. pump \$1,500. Franklin Co. No Sunday Calls. 717-264-1841

For Sale - 60-70 ton hydraulic press. Bending dies, shear and punches included. 10" pneumatic wheels. \$12. Lanc Co 717-733-8007

Wanted - Dairy farm to rent. Spring of "86" 100-200 tillable acres Franklin Co. 717-263-2336

For Sale - Craftman floor model drill press, all cast iron. Old carpenter tools Leb. Co. 717-838-2278 or 838-5207

Wanted - 1981-83 F-250 Ford pickup 4x4. Adams Co. 717-624-2881

For Sale - Hay-Mixed grass, clover and alfalfa. \$1.50/bale. Newark (New Castle Co) Delaware 302-731-5505

For Sale - Border Collie Pups, reg. working champion bloodlines, good watch dog and w/children \$125. Broome Co., NY 607-775-0080

For Sale - Timothy alfalfa hay, approx. 90 bales, \$1 per bale. Lanc. Co. 215-484-2104 after 5 30 p.m

Wanted - Rotary hoe 10' or 12'; For Sale - Belt pulley for Ferguson tractor Blair Co 814-224-4675

For Sale - IH 460 gas tractor, excellent cond., needs tires. \$2,500. Somerset Co. 814-634-8509 after 7 p.m.

For Sale - JD 246 2 row, 3 pt. corn planter w/insecticide and fertilizer attachments, \$295 Good condition. Lanc Co 717-548-2559

For Sale - 7x28 Disc Harrow, 8' cultipacker, NI four bar side rake, 2 section pegharrow. York Co., 717-252-2560 after 3-30

For Sale - Super C, good shape. Ford 3/4 ton truck w/cap, good shape, two wheel trailer 717-834-4488, Perry Co

For Sale - 8' Tag Along Disc. Tag-Along Oliver 2-14 Plow. David Bradley Garden Tractor. \$75 ea. 717-652-1796, Dauphin Co

For Sale - Natural Birch kitchen cabinets w/double S.S. tubs. 10' long, window opening. Nice condition. \$500. 215-484-4623, Lanc. Co.

For Sale - 3 pt. hitch for JD A, B, 50, 60, or 70. 2 Electric circulation fans. Lanc. Co., 717-687-0878

For Sale - Orn age tobacco planter, fir & water barrel, \$150. Baler K/ Back, like new, \$1800 215-932-2764

For Sale - 7' locust posts, 4"x4", \$4.00. 3"x6", \$5.00. Lebanon Co., 717-665-7606

For Sale - Ferguson 3 point hitch, 2 row cultivator, \$150. 10 Assorted sizes chicken feeders, \$10/all. 215-967-3957, Lehigh Co

For Sale - 10' JD Roller Harrow \$450. Int. #46 Baler w/ PTO thrower. \$150. 215-967-1744 Lehigh Co.

For Sale - Choice of 3 forage wagons, 2 Dion's, 1 Gehl. Good to excellent cond Heavy gears Lancaster Co., 717-442-9055.

For Sale - Ferguson T020, utility tractor, good condition, Wanted - Bearing casting B51 for McAdam's 3 pt. disc. Lanc Co., 215-445-6589.

For Sale - Register Holstein Bull, Sire - Spirit. Grandam and Great grandam have sons in A.I. (Service Age) 717-442-8168.

For Sale - 6 Belted Galloway Bulls. 15 belted Galloway Heifers. Richard Merica, Unger, WV, 25447. Morgan W.Va 304-258-3366.

For Sale - Registered Polled Herefords, Victor - Dominno Breeding Six Cows, heffer due May, three yearling heifers. \$7,500. Bradford Co., 717-395-3364.

For Sale - (3) AC 600 fert boxes JD 105 feederhouse. Carl Fogg, RD2, Longbridge Rd., Salem, N.J. 08079

For Sale - House trailer, 12x60, needs repairs. \$450 Lanc Co., Amos Martin, Box 48A, RR2, Narvon, Pa. 17555.

For Sale - AKC Vizsla Bird Dog, female, pheasant trained, \$200 AKC Basset, female, \$125 Franklin Co., 717-328-3869 after 5 p.m

For Sale - 10' Pickup Camper, loaded; range, heater, hot water, shower, toilet, 120-12 volt, sink, beds, Chester Co., \$1200 215-932-2453.

For Sale - 3 DeLaval milkers, 45 lbs. Pails \$100/pc. Bedford Co., 814-766-2397 Can deliver to New Holland, Lancaster Co.

For Sale - AC, WD 45, good condition, \$1200. 717-464-2776 After 5 p.m., 717-786-7065.

For Sale - Glencoe Field Cultivator 14' with level rake, \$475 717-626-8257.

Sale Reports

A Public Auction of real estate and masonry tools was held April 6 by Isaac S. and Fanny B. King, 1 mile north of Buck on Rawlinsville A Lanc. Co., Pa.

The 5 acres of land with a large pond, 2 1/2 story brick & stucco house, 2-story barn with adjoining block building was sold to Chester and Marie Hughes, 1101 Beaver Valley Pike, Lancaster, Pa. for \$74,000.

Other prices were: cement mixer \$600, trawler \$450, tobacco lath \$11.50 per hundred, 10' x 12' new garage door \$195, Briggs engine \$30, small oak desk \$115 and 6 crane chairs \$22 each.

Lloyd Kreider,

Randal Kline, Roy Good & Gary Shirk, auctioneers.

XXX

A Public Sale of farm machinery was held April 6 by Carol and Raymond Hoffman, 1 1/2 miles east of Mt. flintown, Pa.

Some prices were J.D. 4230 tractor QR trans. dual hyd. \$11,000, J.D. 630 tractor \$2300, J.D. 38 harvester \$925, J.D. 1240 corn planter \$510, J.D. gravity wagon \$325, I.H. disc \$725, crop chopper \$375, J.D. 54 spreader \$760, I.H. 1150 grinder-mixer \$860, Papec E-Z trail wagon \$1100, Papec-Grove wagon \$910 and J.D. 36 hay & grain elevator w/1 1/2 h.p. motor \$800.

Bryan D. Imes was the auctioneer.

INTERESTED IN USING COMPOSTED SEWAGE SLUDGE ON YOUR FARM?

The Philadelphia Water Dept. wants to demonstrate to interested farmers how agricultural use of compost can save you money

Tuesday, April 23, 1985
11:30 A.M. to 2 P.M.

At the Little Britain Township Building, Rt. 272, 2 miles south of Little Britain - Rain or Shine.

The Philadelphia Water Dept. will be available to discuss the details. This program is free to qualified farms & follow State & Federal guidelines. Spend 1/2 hour of your time, have lunch on us, and learn how to cut your fertilizer bill substantially.

For more information please call 215-592-6242 during business hours.

HAVING SOIL PROBLEMS?

Here's A Timely Tip...

Be sure you apply enough

The new higher-powered fertilizers often require more lime each application to maintain a neutral soil that tests to pH7



Blue Ball, Pa. (717) 354-4125
Gap, Pa. (717) 442-4148

Vermeer Grain Drill



State-of-the-art in drill technology

- Consistent, uniform, accurate seed placement. Positive depth control system that works in no till, minimum till, conventional tillage
- Giant-capacity 2 compartment hoppers
- Available in 1 2/3 4 drill combinations. Each drill measures 123 Row spacings down to 7" wide
- 90° swivel wheel for easy transport
- Optional 30 gallon ballast tanks add up to 500 lbs of extra weight

Contact Vermeer today for complete information:

PENNSYLVANIA

FLEETWOOD
Red Wing Farms
215-944-0402

PEACH BOTTOM
Triple H Equipment
717 548 3775

KITTANNING
William E Ramer
412-548 2317

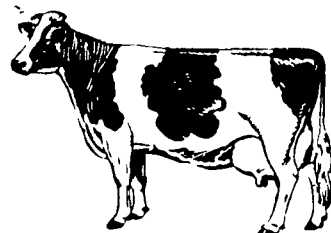
WYALLUSING
William Beebe
717-746 3435

NEW YORK

ALFRED STATION
Roy L. Doane
607 587 8876

CASTLETON
Vermeer Sales & Service
In NY call toll free (800) 342 4184
Outside NY call (800) 833-4803

HAVING A DIFFICULT TIME KNOWING WHEN YOUR COWS ARE COMING IN HEAT - OR KNOWING IF SHE'S IN A TRUE HEAT?



DON'T GUESS - TEST USE AN OVATEC

- Tells You When To Breed -
OVATEC is an ovulation detection instrument that will assure you of shorter calving intervals, decreased services and higher conception.

Mail to: **Oregon Sales**
Oregon Pike
R.D. #1, Leola, PA 17540
Or Call
(717) 656-8380

4-13-85

Indication of reproduction health problems such as:

- Cystic Ovaries**
- Late Ovulating Cows**
- "Silent Heat" Cows**
- Post Partum Infections**

Yes, send me information about Ovatec for cows

Name _____
Address _____
City _____ State _____
Zip _____ Phone () _____